

Host-Pathogen Interactions in Progressive Chronic Periodontitis

M. Hernández, N. Dutzan, J. García-Sesnich, L. Abusleme, A. Dezerega, N. Silva, F.E. González, R. Vernal, T. Sorsa and J. Gamonal

J DENT RES 2011 90: 1164 originally published online 6 April 2011

DOI: 10.1177/0022034511401405

The online version of this article can be found at:

<http://jdr.sagepub.com/content/90/10/1164>

Published by:



<http://www.sagepublications.com>

On behalf of:

International and American Associations for Dental Research

Additional services and information for *Journal of Dental Research* can be found at:

Email Alerts: <http://jdr.sagepub.com/cgi/alerts>

Subscriptions: <http://jdr.sagepub.com/subscriptions>

Reprints: <http://www.sagepub.com/journalsReprints.nav>

Permissions: <http://www.sagepub.com/journalsPermissions.nav>

>> [Version of Record](#) - Sep 14, 2011

[Proof](#) - Apr 6, 2011

[What is This?](#)

M. Hernández^{1,2}, N. Dutzan¹,
J. García-Sesnich¹, L. Abusleme²,
A. Dezerega¹, N. Silva²,
F.E. González^{1,3}, R. Vernal¹,
T. Sorsa⁴, and J. Gamonal¹*

¹Laboratory of Periodontal Biology, Department of Conservative Dentistry, Faculty of Dentistry, University of Chile, Sergio Livingstone (Ex-Olivos) 943 - Comuna de Independencia, Santiago, Chile; ²Department of Pathology, Faculty of Dentistry, University of Chile, Santiago, Chile; ³Disciplinary Program of Immunology, Institute of Biomedical Sciences, Faculty of Medicine, University of Chile, Santiago, Chile; and ⁴Institute of Dentistry, University of Helsinki, and Department of Oral and Maxillofacial Diseases, Helsinki University Central Hospital, Helsinki, Finland; *corresponding author, jgamonal@odontologia.uchile.cl

J Dent Res 90(10):1164-1170, 2011

ABSTRACT

Periodontitis is an infection characterized by the occurrence of supporting tissue destruction with an episodic nature. Disease progression is often determined by the loss of attachment level or alveolar bone, and sequential probing of periodontal attachment remains the most commonly utilized method to diagnose progressive destruction of the periodontium. The tolerance method has been the most extensive clinical method used in recent years to determine site-specific attachment level changes. There is abundant evidence that major tissue destruction in periodontal lesions results from the recruitment of immune cells. Considerable effort has been made to study the host cell and mediator profiles involved in the pathogenesis of chronic periodontitis, but the definition of active sites, where current periodontal breakdown occurs, and consecutive characterization of the mediators involved are still among the main concerns. In the present review, we summarize periodontopathic bacteria and host factors, including infiltrating cell populations, cytokines, and host matrix metalloproteinases, associated with undergoing episodic attachment loss that could partly explain the mechanisms involved in destruction of the supporting tissues of the tooth.

KEY WORDS: chronic periodontitis, immune response, cytokines, progressive lesions.

DOI: 10.1177/0022034511401405

Received July 9, 2010; Last revision January 13, 2011; Accepted January 14, 2011.

© International & American Associations for Dental Research

Host-Pathogen Interactions in Progressive Chronic Periodontitis

INTRODUCTION

Human periodontal diseases (*i.e.*, gingivitis, periodontitis) result from the interaction of heterogeneous etiologic factors, including the formation of a complex biofilm in the subgingival microenvironment, social and behavioral modulations, and genetic or epigenetic traits of the host, each of which is influenced and/or modulated by the host's immune and inflammatory response. Although chronic bacterial and endotoxin exposure is a prerequisite for gingival inflammation and periodontal tissue destruction, its presence alone is not enough to explain disease initiation and progression (Offenbacher, 1996).

Evidence indicates that periodontal disease has dynamic states of exacerbation and remission, which can be described in terms of patterns of disease progression and regression (Goodson *et al.*, 1984). Loss of attachment recorded by sequential probing assessments is thought to reflect the cumulative effect of such repeated episodes, and the clinical tolerance method represents the most commonly used clinical approach to identify progressive periodontal disease (Haffajee *et al.*, 1983).

The major destruction of soft and hard tissues associated with periodontitis progression results from the activation of the host's immune-inflammatory response to the bacterial challenge, and thereby the destructive character of the disease is determined mainly by the nature of these inflammatory responses. During periodontal activity episodes, leukocyte activation involves the active expression of inflammatory mediators, including cytokines, capable of stimulating alveolar bone resorption and soft periodontal tissue destruction *via* host-derived matrix metalloproteinases (MMPs) (Offenbacher, 1996). However, the pathological mechanisms underlying progression of periodontal lesions remain unclear and require further investigation. Therefore, this review will focus on the nature of the host-pathogen interactions in periodontitis, with emphasis on the host immune and inflammatory response and its potential role over disease progression.

PERIODONTAL PATHOGENS

Few available studies have attempted to associate microbial species with periods of disease activity, but they contribute to highlight the specific

periodontopathogens that might be involved in attachment loss episodes. Among them, it has been shown that the prevalence of *Porphyromonas gingivalis* is associated with progressive periodontitis patients (N = 56). *P. gingivalis* was found in 96% of the affected individuals, 75% of them in active sites and 59.7% in inactive sites (Lopez, 2000). Recently, different *P. gingivalis* K serotypes have been associated with the induction of a distinct type of immune response, suggesting a role for the capsule over activation of dendritic cells (Vernal *et al.*, 2009). Thus, this virulence factor may be an important pathogenic determinant in the initiation, progression, and/or the severity of periodontitis.

Analysis of the levels of *Actinobacillus actinomycetemcomitans*, *Tannerella forsythia*, and *P. gingivalis* in periodontal progressive sites by culture techniques demonstrated that active sites had significantly higher prevalence of *P. gingivalis* among total anaerobic micro-organisms, when compared with inactive sites (17.9% and 1.9%, respectively) (Silva *et al.*, 2008). Similarly, *P. gingivalis*, *T. forsythia*, and *Treponema denticola* were more likely to be detected in subgingival plaque samples by real time-PCR in sites that experienced periodontal disease progression than in the matching controls (Byrne *et al.*, 2009). The authors concluded that the levels of *P. gingivalis* and *T. denticola* in subgingival plaque are potentially useful for identifying sites at significant risk of periodontitis progression. Accordingly, comparison of the rate of attachment loss in periodontally healthy individuals under a preventive regimen and individuals with periodontitis and enrolled in a maintenance program showed that the latter group had significantly higher levels of *P. gingivalis*, *A. actinomycetemcomitans*, and *T. forsythia* and underwent disease progression even after a three-year period of a supportive periodontal care program (Teles *et al.*, 2008). A specific *T. forsythia* prTH genotype, which encodes a virulence factor corresponding to a cysteine protease, was found to be significantly higher in individuals with periodontitis who experienced attachment loss compared with control individuals, suggesting that levels of this prTH genotype at baseline may be predictive of future attachment loss (Hamlet *et al.*, 2008).

OSTEOIMMUNOLOGY

Skeletal homeostasis depends on a dynamic balance between the activities of the bone-forming osteoblasts and bone-resorbing osteoclasts. This balance is tightly controlled by various regulatory mechanisms, such as the endocrine system and the immune response (Sato and Takayanagi, 2006). An imbalance in favor of osteoclasts leads to pathological bone resorption, as has been observed in periodontitis (Vernal *et al.*, 2004).

During the last decade, growing evidence supports the idea that changes in immune cell populations inside periodontal tissues might have an important impact on the clinical phenotype and progression of periodontal destruction. Whereas PMNs represent the first line of defense to protect the host from periodontal pathogens, increasing numbers of macrophages in the subepithelial connective tissue have been involved in the progression of periodontal disease, presenting a higher number in active periodontal lesions compared with inactive sites (Zappa *et al.*, 1991). A hypersecretory macrophage phenotype has been hypothesized to explain increased amounts of IL-1 β and TNF- α

in progressive periodontal sites compared with inactive and healthy sites. Furthermore, increasing amounts of monocytes in periodontal tissues can promote the differentiation of bone-resorbing cells under bacterial stimulus, which in turn could be responsible for the bone loss observed in progressive periodontitis sites (Mormann *et al.*, 2008).

T-cells represent one of the main components of the immune response against periodontal infection. Indeed, these cells control the functional activities of both innate and adaptive immunity, determining the clinical outcome (Murphy and Reiner, 2002).

After antigenic stimulation, naïve CD4⁺ T-cells activate, proliferate, and differentiate into distinct effector cell subsets characterized by their specific cytokine production profiles and functions. Th1 lymphocytes are characterized by the secretion of interferon (IFN)- γ , IL-2, IL-12, TNF- α , and TNF- β , and are involved in the eradication of intracellular pathogens. Conversely, Th2 cells are characterized by secretion of IL-4, IL-5, IL-6, IL-9, and IL-13, and are involved in the elimination of extracellular micro-organisms (Mosmann and Coffman, 1989). More recently, two new subsets of CD4⁺ T-cells have been characterized: the Th17 and T regulatory (Treg) cells. The Th17 subset displays pro-inflammatory and pro-resorptive activities through the secretion of IL-6, IL-21, IL-22, IL-23, IL-26 (Vernal and Garcia-Sanz, 2008), and particularly IL-17 and RANKL, both of which are involved in the differentiation and activation of osteoclasts and bone resorption (Vernal *et al.*, 2004, 2006). In contrast, the Treg cells subset displays suppressor functions producing IL-10, transforming growth factor (TGF)- β 1, and cytotoxic T-lymphocyte antigen-4 (CTLA-4) (Vernal and Garcia-Sanz, 2008).

During progressive periodontitis, increased numbers of CD4⁺ lymphocytes are detected in active periodontal lesions compared with inactive lesions (Silva *et al.*, 2008). However, analysis of T-lymphocyte populations by flow cytometry in progressive periodontitis has revealed similar CD4⁺/CD8⁺ ratios between active and inactive periodontal lesions (Silva *et al.*, 2008). In this context, it could be speculated that particular CD4⁺ T-cell phenotypes are associated with active periodontal attachment loss. In fact, an increased expression of T-bet, the 'master-switch' gene controlling Th1 differentiation, has been detected in active periodontal lesions, and this over-expression correlates positively with the increments in IL-1 β and IFN- γ expression (Dutzan *et al.*, 2009). More recently, a Th17-type of response has also been associated with periodontitis-induced tissue destruction (Vernal *et al.*, 2005).

Our group has recently analyzed the role of Th17 and Treg phenotypes during progressive periodontitis (Dutzan *et al.*, 2009). The over-expression of transcription factor orphan nuclear receptor C2 (RORC2), the master-switch gene controlling the Th17 differentiation, and transcription factor forkhead box P3 (Foxp3), the master-switch gene controlling the Treg differentiation, was associated with active periodontal lesions during progressive periodontitis. In fact, IL-17 and RANKL were over-regulated and IL-10 and TGF- β 1 were down-regulated in active periodontal lesions compared with inactive lesions.

Analysis of the associations between different genes yielded significant positive correlations between RORC2 and RANKL and between RORC2 and IL-17; in contrast, Foxp3, IL-10,

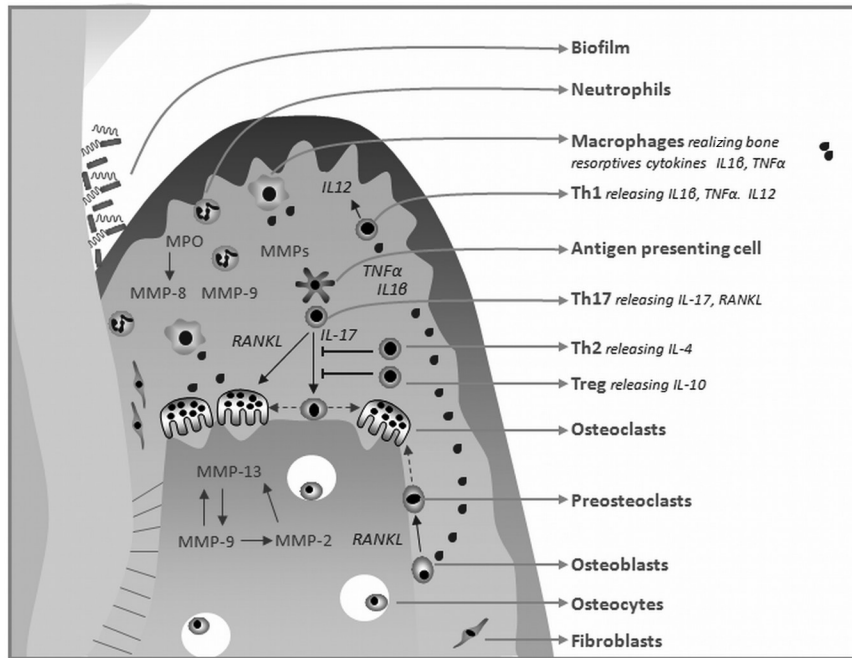


Figure. Role of MMPs, Th17 cells, and RANKL in periodontal tissue destruction induced during progressive periodontitis. As a consequence of infection, an inflammatory response is established in periodontal tissues, characterized by the synthesis of inflammatory cytokines, such as IL-1 β , IL-12, and TNF- α , and, consequently, of matrix metalloproteinases (MMPs), such as MMP-8, MMP-9, MMP-2, and MMP-13. MMPs act in cascades that are switched on during periodontal inflammation, amplifying and perpetuating soft and hard periodontal tissue breakdown by MMP-mediated proteolytic activation and by the removal of collagen I. In the context of an unresolved infection, an adaptive immune response is established, and Th17 cells may be activated, contributing to indirect bone destruction by secreting IL-6 and IL-17, which, in turn, increase the inflammatory response and induce RANKL expression by osteoblastic cells. In addition, Th17 cells may also contribute to alveolar bone loss directly through synthesizing RANKL, thereby inducing an increment in osteoclast differentiation/maturation and alveolar bone resorption. IL = interleukin; MMP = matrix metalloproteinase; TNF = tumor necrosis factor.

TGF- β 1, and CTLA-4 did not show a positive correlation. In view of the down-regulation of IL-10 and TGF- β 1, we speculate that Foxp3⁺ T-cells that do not bear regulatory functions may have a role in periodontal progressive destruction (Dutzan *et al.*, 2009).

Although Treg and Th17 cells play different roles during the pathogenesis of infections, it has been demonstrated that a reciprocal developmental pathway exists for their generation. Naïve T-cells exposed to TGF- β up-regulate Foxp3 and become induced Treg cells; however, when cultured with TGF- β and IL-6, naïve T-cells generate Th17 cells with pathologic activities (Yamazaki *et al.*, 2007). Thus, when the immune response is not activated, TGF- β favors the generation of induced Treg cells, which suppress inflammation; however, when an infection is established—for instance, during either gingivitis or an early phase of periodontitis—IL-6 is synthesized during the innate immune response, inhibiting the generation of Treg cells and inducing the differentiation of pro-inflammatory and pro-resorptive Th17 cells in the presence of TGF- β (Bettelli *et al.*, 2007).

Numerous cytokines have demonstrated an ability to stimulate bone resorption, including TNF- α , IL-1 α , IL-1 β , IL-6,

IL-11, IL-15, and IL-17, whereas others, such as IL-4, IL-10, IL-13, IL-18, GM-CSF, and TGF- β 1, are inhibitors (Walsh *et al.*, 2006). In line with IL-17, IL-1 β and IFN- γ were significantly over-expressed in active periodontal lesions compared with inactives (Dutzan *et al.*, 2009), whereas increased GCF interleukin-1 levels were associated with active sites (Gamonal *et al.*, 2000). In addition to cytokines, levels of chemokine monocyte chemoattractant protein (MCP)-3 (Dezerega *et al.*, 2010) and prostaglandin E₂ were found to be significantly higher in GCF of active sites compared with inactives (Offenbacher *et al.*, 1993). In this context, functional characterization of 3 novel members of the TNF-ligand and receptor superfamily, RANKL, its receptor RANK, and the soluble decoy receptor of RANKL, OPG, has significantly contributed to the establishment of osteoimmunology, and their participation as key modulators of physiological and pathological bone resorption. RANKL exerts its biological effects through inducing osteoclast differentiation, maturation, and activation, and inhibiting their apoptosis (Lacey *et al.*, 1998).

The identification of RANKL as the cytokine TRANCE (TNF-related activation-induced cytokine), previously identified in T-cells, has allowed us to envisage the possibility that CD4⁺ T-cells may have the capacity to induce osteoclast differentiation and activation by

acting directly on osteoclast precursors and mature osteoclasts, through synthesis of RANKL during bone-resorptive diseases (Vernal *et al.*, 2004). Furthermore, many well-known osteotropic factors, including TNF- α , IL-1 β , IL-6, and IL-17, exert their osteoclastogenic activity by inducing RANKL expression on osteoblasts and CD4⁺ T-cells (Boyle *et al.*, 2003). Th17 cells promote osteoclastogenesis primarily through the production of IL-17 and RANKL (Sato *et al.*, 2006). Furthermore, IL-17 facilitates local inflammation by recruiting and activating immune cells, leading to an abundance of inflammatory cytokines, such as IL-1 β and TNF- α , and by enhancing RANKL expression (Weaver *et al.*, 2006) (Fig.). In fact, an increased synthesis of RANKL and over-expression of RORC2, RANKL, and IL-17 have been detected in active lesions during progressive periodontitis (Vernal *et al.*, 2004; Dutzan *et al.*, 2009).

Our findings have demonstrated that the total amount of RANKL detected in gingival crevicular fluid of individuals undergoing periodontitis progression was higher in active periodontal lesions than in inactive lesions, proposing this pro-resorptive factor as a marker of active alveolar bone resorption associated with periodontal infection (Vernal *et al.*, 2004;

Dutzan *et al.*, 2009). This finding was corroborated when cytokine mRNA analysis was performed with quantitative real-time PCR. In active periodontal lesions, RANKL was significantly over-expressed compared with inactive periodontal lesions (Dutzan *et al.*, 2009).

In response to periodontopathogens that have been strongly associated with periodontitis progression—for instance, *P. gingivalis* and *A. actinomycetemcomitans* (Silva *et al.*, 2008)—RANKL expression has been reported to increase in CD4⁺ T-lymphocytes infiltrating periodontally affected tissues (Yamamoto *et al.*, 2006). In this context, bacterial LPS induces production of RANKL and several pro-inflammatory cytokines in T-cells through a TLR-mediated signaling pathway, where Cot/Tp12, a member of the MAPK family of serine threonine kinases, plays a central role. In fact, it has been established that the extent of alveolar bone loss and osteoclastogenesis observed in an animal model of ligature-induced periodontitis was decreased in Cot/Tp12-deficient mice, and this decrement was associated with a reduction of RANKL expression in periodontal tissues, suggesting that Cot/Tp12 is essential for RANKL-mediated alveolar bone loss and osteoclastogenesis during periodontitis (Ohnishi *et al.*, 2010).

The role of Th17 cells in host defense against periodontopathogens is just emerging, particularly in terms of their destructive potential in progressive periodontitis. Th17 lymphocytes constitute an early defense against infections and represent a bridge between innate and adaptive immunity. Moreover, Th17 cells seem to antagonize Treg cell development, thereby amplifying the inflammatory response, and thus playing a crucial role in the progression of inflammatory and autoimmune disorders (Bettelli *et al.*, 2006). Th17 cells represent the osteoclastogenic Th phenotype involved in progressive periodontitis, mainly by inducing osteoclastogenesis and bone resorption through synthesizing IL-17 and RANKL in active periodontal lesions; however, several aspects of Th17 activation, function, and regulation remain unclear and are currently being investigated.

MATRIX METALLOPROTEINASES

Extracellular proteolysis and tissue remodeling are integral features of periodontal homeostasis, involving a tight regulation between protease activity and inhibition. Matrix metalloproteinases (MMPs) can synergistically degrade almost all extracellular matrix and basement membrane components and regulate several cellular processes, including inflammatory and immune responses, representing the most prominent and widely studied proteinase family associated with periodontal diseases (Folgueras *et al.*, 2004). MMPs are genetically distinct but structurally related zinc-dependent metalloendopeptidases. The 23 MMPs expressed in humans can be classified into different subgroups based on their primary structures and substrate specificities, including collagenases (MMP-1, -8, -13), gelatinases (MMP-9, -2), membrane-type MMPs (MT-MMPs, MMP-14, -15, -16, -17, -24, -25), and other MMPs (Folgueras *et al.*, 2004). Overall, the pathophysiological significance of increased MMP expression in periodontitis will rely on their regulation by

activating enzymes and endogenous inhibitors (Sorsa *et al.*, 2006; Hernandez Rios *et al.*, 2009).

Type I collagen is the main extracellular matrix component of soft and hard periodontal tissues, and thus, collagen degradation is regarded as one of the key factors in uncontrolled destructive lesions (Golub *et al.*, 1997). Although numerous cross-sectional studies have indicated that excessive collagenase levels parallel the severity of periodontal lesions and inflammation (Sorsa *et al.*, 2006), there are far fewer data from longitudinal studies associating MMPs with ongoing destruction of periodontal supporting tissue.

The major collagenolytic MMPs associated with severity of periodontal disease are MMP-8 and MMP-13 (Sorsa *et al.*, 2004, 2006; Leppilahti *et al.*, 2011). Despite the genetic background underlying periodontal diseases, most MMP gene polymorphism studies undertaken in different ethnic populations have been conducted without concluding associations with susceptibility to periodontitis. An exception could be the -1607 2G MMP-1 polymorphic allele that has been related to susceptibility to develop severe chronic periodontitis and -519 AG and GG MMP-1 genotypes in the outcome of periodontal therapy in the Turkish population (Pirhan *et al.*, 2008; Ustun *et al.*, 2008).

GCF MMP-8 accounts for the bulk of collagenases, followed by MMP-13 (Golub *et al.*, 1997). Clinical trials testing sub-antimicrobial dose doxycycline (SDD) treatment reported an association between improvement of clinical parameters, reduction of GCF total collagenase activity, and a decrease in the bone resorption fragment ICTP in an experimental (SDD) group composed of post-menopausal women exhibiting periodontitis and systemic osteopenia during a two-year follow-up (Golub *et al.*, 2008). It is worth noting that the finding of a strong positive correlation between GCF ICTP, presumably released during progression of alveolar bone resorption, and total collagenase activity supports a role for collagenases in bone loss and thereby in disease progression that can be reflected in GCF.

Elevation of active MMP-8 has been previously associated with the conversion of gingivitis to periodontitis and the progression of established periodontitis (Mantyla *et al.*, 2006). MMP-8, like MMP-9 and myeloperoxidase (MPO), is mainly released from neutrophils in a latent form and is induced and activated during periodontal inflammation by host inflammatory mediators like TNF- α , IL-1 β , reactive oxygen species (ROS), including MPO-produced hypochlorous acid (Saari *et al.*, 1990), and microbial and host-derived proteases (Sorsa *et al.*, 1992). Recently, our group developed a study associating GCF MMP-8, MMP-14, myeloperoxidase (MPO), and TIMP-1 levels in GCF from progressive periodontitis patients, determined clinically by the tolerance method, at baseline and after conventional periodontal therapy (Hernandez *et al.*, 2011). In agreement with previous findings, neutrophil MMP-8 was the predominant isotype (Golub *et al.*, 1997, 2008). A significant strong positive correlation among total MMP-8 levels, active MMP-8 forms, and MPO was found in all progressive sites at baseline, whereas periodontal treatment consisting of scaling and root planing (SRP) resulted in significant MPO and MMP-8 reductions, together with a loss of MPO/MMP-8 association, despite the reduced sample size, except for the active sites. These results

point to the existence of an MPO-mediated oxidative pathway enhancing proMMP-8 underlying periodontitis progression. Furthermore, reactive oxygen species (ROS) can oxidatively inactivate TIMP-1 (Sorsa *et al.*, 2006). In agreement with these findings, repeatedly elevated GCF MMP-8 concentrations determined by longitudinal monitoring of periodontal response during the maintenance phase after SRP were reported to be associated with a lack of improvement of clinical parameters (Mantyla *et al.*, 2006). Furthermore, MMP-8 levels tended to decrease in treated stable sites ($n = 3$) and increased in unstable ones ($n = 3$) (Sorsa *et al.*, 2009).

Increases in MMP-8 and IL-1 β during the first year of periodontal maintenance have been associated with increased odds of subsequent attachment loss, but no associations were found between MMP-8 levels and bone loss (Reinhardt *et al.*, 2010). Overall, it is plausible that high MMP-8 levels could reflect mainly soft periodontal tissue destruction and inflammation. Unchanged MMP-8 levels after periodontal treatment might be interpreted as a poor host response, representing sites at risk of further loss of periodontal support. Additionally, MMP-8/MPO association could reflect the persistence of MMP-8 activation and, consequently, the need for further treatment, follow-up, and a suitable target for pharmacological therapy (Sorsa *et al.*, 2009; Hernandez *et al.*, 2011).

In spite of the association between high MMP-8 levels and periodontitis, its biological functions have not been completely clarified. MMP-8 expression is not restricted to PMNs and soft-tissue mesenchymal cells, but it is also expressed in osteoblasts, osteocytes, and endothelial cells during early phases of bone healing, suggesting a role for the enzyme in connective tissue formation and degradation of bone matrix proteins (Itagaki *et al.*, 2008). Development of *P. gingivalis*-induced periodontitis in a MMP-8-deficient mouse model showed unexpectedly extensive alveolar bone resorption (Kuula *et al.*, 2009) and reduced expression of LIX/CXCL5 in gingival epithelium of MMP-8 null mice compared with wild types (Hernandez *et al.*, 2010). LIX/CXCL5 represents the most potent PMN chemoattractant in mice and might direct neutrophil influx to periodontal tissues at the oral interface (Van Den Steen *et al.*, 2003). Overall, maintenance of MMP-8 at physiological levels could promote a protective inflammatory process and the onset of the reparative phase, whereas pathologically elevated MMP-8 levels could contribute to excessive and sustained proteolysis, leading to periodontal supporting tissue breakdown.

MMP-13 was first cloned from breast carcinoma (Freije *et al.*, 1994) and is expressed by sulcular epithelial cells, macrophage-like cells, fibroblasts, plasma cells, and osteoblasts (Rydzien *et al.*, 2000; Hernandez *et al.*, 2006). Longitudinal studies in disease progression demonstrated that, despite the fact that active and inactive sites displayed similar MMP-13 levels, MMP-13 activity significantly increased in active sites (Hernandez *et al.*, 2006, 2007; Hernandez Rios *et al.*, 2009). Based on these data, increasing levels of MMP-13 might be associated with stable periodontitis, whereas the occurrence of disease activity might be related to an imbalance between MMP-13 and their inhibitors, resulting in increased enzyme activity.

To address the potential mechanisms of the downstream MMP-13 activation cascade, our group studied the association among ICTP levels, the activation rates of proMMP-9 and proMMP-2, and MMP-13 activity (Hernandez Rios *et al.*, 2009). According to our previous results, MMP-13 activity and ICTP levels increased along with low TIMP-1 levels in active sites compared with inactive and healthy sites, supporting a putative association between MMP-13 activity and alveolar bone resorption. Additionally, MMP-13 significantly increased proMMP-9 activation rate in diseased gingival tissue, and the further addition of an MMP-13 specific synthetic inhibitor, CL-82198, prevented proMMP-9 activation (Hernandez Rios *et al.*, 2009). MMP-13 might potentiate bone resorption by generating collagen fragments activating osteoclasts (Hill *et al.*, 1995) and by enhancing proMMP-9 activation *in vitro* (Knauper *et al.*, 1997), which is also involved in periodontal tissue destruction and disease progression (Belmar *et al.*, 2008). Recent evidence suggests that MMP-13 might also influence RANKL/OPG axis (Nannuru *et al.*, 2010). Active MMP-9, in turn, further digests denatured collagen derived from MMP-13 activity (Hill *et al.*, 1995), is thought to act over pre-osteoclast recruitment to sites for osteoclast differentiation and bone resorption, and activates proMMP-13 and proMMP-2. Thus, this novel proteolytic cascade could perpetuate periodontal soft- and hard-tissue destruction *in vivo* in a ‘feed forward’ manner (Fig.).

CONCLUDING REMARKS

Despite its limitations, the “burst” theory (Goodson *et al.*, 1982) is one of the most accepted models, whereas the tolerance method (Haffajee *et al.*, 1983) represents the most prevalent clinical approach to determine site-specific changes of attachment level over time. The susceptibility to development of destructive/progressive periodontitis relies on the influence of multiple behavioral, environmental, and genetic factors. Assessment of microbiological profiles explains only a part of the disease phenotype. Development and progression of periodontal lesions involve an imbalance of pro-inflammatory molecules released by specific cell populations. Macrophages represent an important source of pro-inflammatory cytokines, including IL-1 β and TNF- α , that, under dysregulation, contribute to host tissue destruction. Active periodontal lesions have also been characterized by a prominent infiltration of activated CD4⁺ T-cells over Treg, which express osteolytic-associated cytokines such as IL-17 promoting RANKL-mediated alveolar bone destruction. These cytokines are also capable of stimulating periodontal breakdown and collagenase-mediated destruction.

Oxidative and proteolytic activation cascades involving MMP-8 and MMP-13 at pathologically high levels lead to direct breakdown of periodontal supporting tissue, enhanced proteolysis, and perpetuation of inflammatory response, resulting in attachment loss. Involved inflammatory and proteolytic pathways characterizing active lesions may provide a biological signature of the underlying disease phenotype that might be useful for the development of adjunctive chair-side point-of-care diagnostics to predict future attachment loss and improve treatment decisions, and also for future drug development.

ACKNOWLEDGMENTS

This study was supported by project grants 1090046 and 1090461 from Scientific and Technologic Investigation Resource (FONDECYT), Santiago, Chile, and by grants from The Academy of Finland (TS) and the Research Foundation of Helsinki University Central Hospital (TS). The authors are grateful to Nicole Baden for her valuable collaboration in this study. The authors declare that they have no conflict of interests.

REFERENCES

- Belmar MJ, Pabst C, Martinez B, Hernandez M (2008). Gelatinolytic activity in gingival crevicular fluid from teeth with periapical lesions. *Oral Surg Oral Med Oral Pathol Oral Radiol Endod* 105:801-806.
- Bettelli E, Carrier Y, Gao W, Korn T, Strom TB, Oukka M, et al. (2006). Reciprocal developmental pathways for the generation of pathogenic effector TH17 and regulatory T cells. *Nature* 441:235-238.
- Bettelli E, Oukka M, Kuchroo VK (2007). T(H)-17 cells in the circle of immunity and autoimmunity. *Nat Immunol* 8:345-350.
- Boyle WJ, Simonet WS, Lacey DL (2003). Osteoclast differentiation and activation. *Nature* 423:337-342.
- Byrne SJ, Dashper SG, Darby IB, Adams GG, Hoffmann B, Reynolds EC (2009). Progression of chronic periodontitis can be predicted by the levels of *Porphyromonas gingivalis* and *Treponema denticola* in subgingival plaque. *Oral Microbiol Immunol* 4:469-477.
- Dezerega A, Pozo P, Hernandez M, Oyarzun A, Rivera O, Dutzan N, et al. (2010). Chemokine monocyte chemoattractant protein-3 in progressive periodontal lesions in patients with chronic periodontitis. *J Periodontol* 81:267-276.
- Dutzan N, Gamonal J, Silva A, Sanz M, Vernal R (2009). Over-expression of forkhead box P3 and its association with receptor activator of nuclear factor-kappa B ligand, interleukin (IL) -17, IL-10 and transforming growth factor-beta during the progression of chronic periodontitis. *J Clin Periodontol* 36:396-403.
- Folgueras AR, Pendas AM, Sanchez LM, Lopez-Otín C (2004). Matrix metalloproteinases in cancer: from new functions to improved inhibition strategies. *Int J Dev Biol* 48:411-424.
- Freije JM, Diez-Itza I, Balbin M, Sanchez LM, Blasco R, Tolivia J, et al. (1994). Molecular cloning and expression of collagenase-3, a novel human matrix metalloproteinase produced by breast carcinomas. *J Biol Chem* 269:16766-16773.
- Gamonal J, Acevedo A, Bascones A, Jorge O, Silva A (2000). Levels of interleukin-1 beta, -8, and -10 and RANTES in gingival crevicular fluid and cell populations in adult periodontitis patients and the effect of periodontal treatment. *J Periodontol* 71:1535-1545.
- Golub LM, Lee HM, Greenwald RA, Ryan ME, Sorsa T, Salo T, et al. (1997). A matrix metalloproteinase inhibitor reduces bone-type collagen degradation fragments and specific collagenases in gingival crevicular fluid during adult periodontitis. *Inflamm Res* 46:310-319.
- Golub LM, Lee HM, Stoner JA, Sorsa T, Reinhardt RA, Wolff MS, et al. (2008). Subantimicrobial-dose doxycycline modulates gingival crevicular fluid biomarkers of periodontitis in postmenopausal osteopenic women. *J Periodontol* 79:1409-1418.
- Goodson JM, Tanner AC, Haffajee AD, Sornberger GC, Socransky SS (1982). Patterns of progression and regression of advanced destructive periodontal disease. *J Clin Periodontol* 9:472-481.
- Goodson JM, Haffajee AD, Socransky SS (1984). The relationship between attachment level loss and alveolar bone loss. *J Clin Periodontol* 11:348-359.
- Haffajee AD, Socransky SS, Goodson JM (1983). Comparison of different data analyses for detecting changes in attachment level. *J Clin Periodontol* 10:298-310.
- Hamlet SM, Ganashan N, Cullinan MP, Westerman B, Palmer JE, Seymour GJ (2008). A 5-year longitudinal study of *Tannerella forsythia* prTH genotype: association with loss of attachment. *J Periodontol* 79:144-149.
- Hernandez M, Valenzuela MA, Lopez-Otín C, Alvarez J, Lopez JM, Vernal R, et al. (2006). Matrix metalloproteinase-13 is highly expressed in destructive periodontal disease activity. *J Periodontol* 77:1863-1870.
- Hernandez M, Martinez B, Tejerina JM, Valenzuela MA, Gamonal J (2007). MMP-13 and TIMP-1 determinations in progressive chronic periodontitis. *J Clin Periodontol* 34:729-735.
- Hernandez M, Gamonal J, Tervahartiala T, Mantyla P, Rivera O, Dezerega A, et al. (2010). Associations between matrix metalloproteinase-8 and -14 and myeloperoxidase in gingival crevicular fluid from subjects with progressive chronic periodontitis: a longitudinal study. *J Periodontol* 81:1644-1652.
- Hernandez M, Gamonal J, Salo T, Tervahartiala T, Hukkanen M, Tjäderhane L, et al. (2011). Reduced expression of lipopolysaccharide-induced CXC chemokine in *Porphyromonas gingivalis*-induced experimental periodontitis in matrix metalloproteinase-8 null mice. *J Periodontol Res* 46:58-66.
- Hernandez Rios M, Sorsa T, Obregon F, Tervahartiala T, Valenzuela MA, Pozo P, et al. (2009). Proteolytic roles of matrix metalloproteinase (MMP)-13 during progression of chronic periodontitis: initial evidence for MMP-13/MMP-9 activation cascade. *J Clin Periodontol* 36:1011-1017.
- Hill PA, Docherty AJ, Bottomley KM, O'Connell JP, Morphy JR, Reynolds JJ, et al. (1995). Inhibition of bone resorption *in vitro* by selective inhibitors of gelatinase and collagenase. *Biochem J* 308(Pt 1):167-175.
- Itagaki T, Honma T, Takahashi I, Echigo S, Sasano Y (2008). Quantitative analysis and localization of mRNA transcripts of type I collagen, osteocalcin, MMP 2, MMP 8, and MMP 13 during bone healing in a rat calvarial experimental defect model. *Anat Rec (Hoboken)* 291:1038-1046.
- Knauper V, Smith B, Lopez-Otín C, Murphy G (1997). Activation of progelatinase B (proMMP-9) by active collagenase-3 (MMP-13). *Eur J Biochem* 248:369-373.
- Kuula H, Salo T, Pirila E, Tuomainen AM, Jauhiainen M, Uitto VJ, et al. (2009). Local and systemic responses in matrix metalloproteinase 8-deficient mice during *Porphyromonas gingivalis*-induced periodontitis. *Infect Immun* 77:850-859.
- Lacey DL, Timms E, Tan HL, Kelley MJ, Dunstan CR, Burgess T, et al. (1998). Osteoprotegerin ligand is a cytokine that regulates osteoclast differentiation and activation. *Cell* 93:165-176.
- Leppilähti J, Ahonen MM, Hernandez M, Munjal S, Netuschil L, Uitto VJ, et al. (2011). Oral rinse MMP-8 point-of-care immuno test identifies patients with strong periodontal inflammatory burden. *Oral Dis* 17:115-122.
- Lopez NJ (2000). Occurrence of *Actinobacillus actinomycetemcomitans*, *Porphyromonas gingivalis*, and *Prevotella intermedia* in progressive adult periodontitis. *J Periodontol* 71:948-954.
- Mantyla P, Stenman M, Kinane D, Salo T, Suomalainen K, Tikanoja S, et al. (2006). Monitoring periodontal disease status in smokers and nonsmokers using a gingival crevicular fluid matrix metalloproteinase-8-specific chair-side test. *J Periodontol Res* 41:503-512.
- Mormann M, Thederan M, Nackchbandi I, Giese T, Wagner C, Hansch GM (2008). Lipopolysaccharides (LPS) induce the differentiation of human monocytes to osteoclasts in a tumour necrosis factor (TNF) alpha-dependent manner: a link between infection and pathological bone resorption. *Mol Immunol* 45:3330-3337.
- Mosmann TR, Coffman RL (1989). TH1 and TH2 cells: different patterns of lymphokine secretion lead to different functional properties. *Annu Rev Immunol* 7:145-173.
- Murphy KM, Reiner SL (2002). The lineage decisions of helper T cells. *Nat Rev Immunol* 2:933-944.
- Nannuru KC, Futakuchi M, Varney ML, Vincent TM, Marcusson EG, Singh RK (2010). Matrix metalloproteinase (MMP)-13 regulates mammary tumor-induced osteolysis by activating MMP9 and transforming growth factor-beta signaling at the tumor-bone interface. *Cancer Res* 70:3494-3504.
- Offenbacher S (1996). Periodontal diseases: pathogenesis. *Ann Periodontol* 1:821-878.
- Offenbacher S, Collins JG, Heasman PA (1993). Diagnostic potential of host response mediators. *Adv Dent Res* 7:175-181.
- Ohnishi T, Okamoto A, Kakimoto K, Bandow K, Chiba N, Matsuguchi T (2010). Involvement of Cot/Tp12 in bone loss during periodontitis. *J Dent Res* 89:192-197.

- Pirhan D, Atilla G, Emingil G, Sorsa T, Tervahartiala T, Berdeli A (2008). Effect of MMP-1 promoter polymorphisms on GCF MMP-1 levels and outcome of periodontal therapy in patients with severe chronic periodontitis. *J Clin Periodontol* 35:862-870.
- Reinhardt RA, Stoner JA, Golub LM, Lee HM, Nummikoski PV, Sorsa T, *et al.* (2010). Association of gingival crevicular fluid biomarkers during periodontal maintenance with subsequent progressive periodontitis. *J Periodontol* 81:251-259.
- Rydziel S, Durant D, Canalis E (2000). Platelet-derived growth factor induces collagenase 3 transcription in osteoblasts through the activator protein 1 complex. *J Cell Physiol* 184:326-333.
- Saari H, Suomalainen K, Lindy O, Kontinen YT, Sorsa T (1990). Activation of latent human neutrophil collagenase by reactive oxygen species and serine proteases. *Biochem Biophys Res Commun* 171:979-987.
- Sato K, Takayanagi H (2006). Osteoclasts, rheumatoid arthritis, and osteoimmunology. *Curr Opin Rheumatol* 18:419-426.
- Sato K, Suematsu A, Okamoto K, Yamaguchi A, Morishita Y, Kadono Y, *et al.* (2006). Th17 functions as an osteoclastogenic helper T cell subset that links T cell activation and bone destruction. *J Exp Med* 203:2673-2682.
- Silva N, Dutzan N, Hernandez M, Dezerega A, Rivera O, Aguilon JC, *et al.* (2008). Characterization of progressive periodontal lesions in chronic periodontitis patients: levels of chemokines, cytokines, matrix metalloproteinase-13, periodontal pathogens and inflammatory cells. *J Clin Periodontol* 35:206-214.
- Sorsa T, Ingman T, Suomalainen K, Haapasalo M, Kontinen YT, Lindy O, *et al.* (1992). Identification of proteases from periodontopathogenic bacteria as activators of latent human neutrophil and fibroblast-type interstitial collagenases. *Infect Immun* 60:4491-4495.
- Sorsa T, Tjäderhane L, Salo T (2004). Matrix metalloproteinases (MMPs) in oral diseases. *Oral Dis* 10:311-318.
- Sorsa T, Tjäderhane L, Kontinen YT, Lauhio A, Salo T, Lee HM, *et al.* (2006). Matrix metalloproteinases: contribution to pathogenesis, diagnosis and treatment of periodontal inflammation. *Ann Med* 38:306-321.
- Sorsa T, Hernandez M, Leppilähti J, Munjal S, Netuschil L, Mantyla P (2009). Detection of gingival crevicular fluid MMP-8 levels with different laboratory and chair-side methods. *Oral Dis* 16:39-45.
- Teles RP, Patel M, Socransky SS, Haffajee AD (2008). Disease progression in periodontally healthy and maintenance subjects. *J Periodontol* 79:784-794.
- Ustun K, Alptekin NO, Hakki SS, Hakki EE (2008). Investigation of matrix metalloproteinase-1-1607 1G/2G polymorphism in a Turkish population with periodontitis. *J Clin Periodontol* 35:1013-1019.
- Van Den Steen PE, Wuyts A, Husson SJ, Proost P, Van Damme J, Opendakker G (2003). Gelatinase B/MMP-9 and neutrophil collagenase/MMP-8 process the chemokines human GCP-2/CXCL6, ENA-78/CXCL5 and mouse GCP-2/LIX and modulate their physiological activities. *Eur J Biochem* 270:3739-3749.
- Vernal R, Garcia-Sanz JA (2008). Th17 and Treg cells, two new lymphocyte subpopulations with a key role in the immune response against infection. *Infect Disord Drug Targets* 8:207-220.
- Vernal R, Chaparro A, Graumann R, Puente J, Valenzuela MA, Gamonal J (2004). Levels of cytokine receptor activator of nuclear factor kappaB ligand in gingival crevicular fluid in untreated chronic periodontitis patients. *J Periodontol* 75:1586-1591.
- Vernal R, Dutzan N, Chaparro A, Puente J, Antonieta Valenzuela M, Gamonal J (2005). Levels of interleukin-17 in gingival crevicular fluid and in supernatants of cellular cultures of gingival tissue from patients with chronic periodontitis. *J Clin Periodontol* 32:383-389.
- Vernal R, Dutzan N, Hernandez M, Chandia S, Puente J, Leon R, *et al.* (2006). High expression levels of receptor activator of nuclear factor-kappa B ligand associated with human chronic periodontitis are mainly secreted by CD4+ T lymphocytes. *J Periodontol* 77:1772-1780.
- Vernal R, Leon R, Silva A, van Winkelhoff AJ, Garcia-Sanz JA, Sanz M (2009). Differential cytokine expression by human dendritic cells in response to different *Porphyromonas gingivalis* capsular serotypes. *J Clin Periodontol* 36:823-829.
- Walsh MC, Kim N, Kadono Y, Rho J, Lee SY, Lorenzo J, *et al.* (2006). Osteoimmunology: interplay between the immune system and bone metabolism. *Annu Rev Immunol* 24:33-63.
- Weaver CT, Harrington LE, Mangan PR, Gavrieli M, Murphy KM (2006). Th17: an effector CD4 T cell lineage with regulatory T cell ties. *Immunity* 24:677-688.
- Yamamoto T, Kita M, Oseko F, Nakamura T, Imanishi J, Kanamura N (2006). Cytokine production in human periodontal ligament cells stimulated with *Porphyromonas gingivalis*. *J Periodontol Res* 41:554-559.
- Yamazaki S, Bonito AJ, Spisek R, Dhodapkar M, Inaba K, Steinman RM (2007). Dendritic cells are specialized accessory cells along with TGF-beta for the differentiation of Foxp3+ CD4+ regulatory T cells from peripheral Foxp3 precursors. *Blood* 110:4293-4302.
- Zappa U, Reinking-Zappa M, Graf H, Espeland M (1991). Cell populations and episodic periodontal attachment loss in humans. *J Clin Periodontol* 18:508-515.