

# Modelling [C I] emission from turbulent molecular clouds

Simon C. O. Glover,<sup>1</sup>★ Paul C. Clark,<sup>1,2</sup> Milica Micic<sup>3</sup> and Faviola Molina<sup>1,4</sup>

<sup>1</sup>Universität Heidelberg, Zentrum für Astronomie, Institut für Theoretische Astrophysik, Albert-Ueberle-Strasse 2, D-69120 Heidelberg, Germany

<sup>2</sup>School of Physics and Astronomy, Cardiff University, Cardiff CF24 3AA, UK

<sup>3</sup>Astronomical Observatory, Volgina 7, 11060 Belgrade, Republic of Serbia

<sup>4</sup>Department of Computer Science, Faculty of Physical and Mathematical Sciences, University of Chile, Beauchef 851, Santiago, Chile

Accepted 2014 December 18. Received 2014 December 13; in original form 2014 March 14

## ABSTRACT

We use detailed numerical simulations of a turbulent molecular cloud to study the usefulness of the [C I] 609 and 370  $\mu\text{m}$  fine structure emission lines as tracers of cloud structure. Emission from these lines is observed throughout molecular clouds, and yet they have attracted relatively little theoretical attention. We show that the widespread [C I] emission results from the fact that the clouds are turbulent. Turbulence creates large density inhomogeneities, allowing radiation to penetrate deeply into the clouds. As a result, [C I] emitting gas is found throughout the cloud. We examine how well [C I] emission traces the cloud structure, and show that the 609  $\mu\text{m}$  line traces column density accurately over a wide range of values. For visual extinctions greater than a few, [C I] and  $^{13}\text{CO}$  both perform well, but [C I] performs better at  $A_V \leq 3$ . We have also studied the distribution of [C I] excitation temperatures. We show that these are typically smaller than the kinetic temperature, indicating that the carbon is subthermally excited. We discuss how best to estimate the excitation temperature and the carbon column density, and show that the latter tends to be systematically underestimated. Consequently, estimates of the atomic carbon content of real giant molecular clouds could be wrong by up to a factor of 2.

**Key words:** stars: formation – ISM: clouds – ISM: molecules – galaxies: ISM.

## 1 INTRODUCTION

Giant molecular clouds (GMCs) are the sites where the majority of Galactic star formation occurs, and hence it is important to understand their properties if we are to understand how star formation proceeds within our Galaxy. The two most abundant chemical species in molecular clouds are molecular hydrogen ( $\text{H}_2$ ) and atomic helium, and between them they are responsible for the vast majority of the mass of the clouds. However, neither of these species can easily be observed within molecular clouds, as the gas temperature is too low to excite their internal energy levels. Observational studies of GMCs are therefore forced to focus on less abundant tracers that can be observed at typical GMC temperatures. The most popular such tracer is carbon monoxide ( $\text{CO}$ ).<sup>1</sup>

Unfortunately,  $\text{CO}$  is not without its problems as a molecular gas tracer. At high column densities, the problem is one of opacity: the  $\text{CO}$  rotational transitions start to become optically thick, breaking the relationship between  $\text{CO}$  emission and column density (see e.g. Pineda, Caselli & Goodman 2008). Fortunately, this problem can be avoided to a large extent by observing less common isotopic

variants of  $\text{CO}$ , such as  $^{13}\text{CO}$  or  $\text{C}^{18}\text{O}$ , which remain optically thin up to much higher column densities. At low column densities, on the other hand, the problem is one of abundance: in low extinction regions,  $\text{CO}$  is strongly photodissociated by the interstellar radiation field (ISRF), making it very difficult to observe any  $\text{CO}$  emission from these regions (see e.g. van Dishoeck & Black 1988; Goldsmith et al. 2008), let alone to learn anything about the thermal state or kinematics of this gas.

It is therefore worthwhile examining other possible tracers of the gas within molecular clouds. One particularly interesting possibility is neutral atomic carbon. Spin–orbit coupling splits the atomic carbon ground state into three fine structure levels with total angular momenta  $J = 0, 1, 2$ , and forbidden transitions between these three levels give rise to two prominent fine structure lines: the [C I]  $^3P_1 \rightarrow ^3P_0$  transition at 609  $\mu\text{m}$  (hereafter written simply as the  $1 \rightarrow 0$  transition) and the [C I]  $^3P_2 \rightarrow ^3P_1$  transition at 370  $\mu\text{m}$  (hereafter the  $2 \rightarrow 1$  transition). The energy difference between the  $^3P_1$  and  $^3P_0$  levels is only  $\Delta E_{10}/k \simeq 24$  K, while between the  $^3P_2$  and  $^3P_0$  levels it is  $\Delta E_{20}/k \simeq 60$  K. Therefore, at typical molecular cloud temperatures of 10–20 K, both of the fine structure lines can be excited.

So far, however, neutral atomic carbon has attracted much less attention than  $\text{CO}$  as a molecular cloud tracer. There are several reasons for this. Observationally, the [C I] lines are harder to study than the low  $J$  rotational transitions of  $\text{CO}$ : they typically have

\* E-mail: [glover@uni-heidelberg.de](mailto:glover@uni-heidelberg.de)

<sup>1</sup> Unless otherwise stated, when we refer to  $\text{CO}$  in this paper, we mean  $^{12}\text{CO}$ , the most abundant isotopologue.

lower brightness temperatures, and are also situated in a wavelength regime where the effects of atmospheric absorption can be highly significant. Theoretically, it was originally thought that neutral atomic carbon would be abundant only at the edges of clouds (Langer 1976), limiting its usefulness as a tracer of the bulk of the cloud. Subsequent observations have shown that this expectation is incorrect, and that [C I] 609  $\mu\text{m}$  emission is widespread within clouds (Frerking et al. 1989; Little et al. 1994; Schilke et al. 1995; Kramer et al. 2008), and yet the perception of [C I] as a tracer of cloud surfaces has proved difficult to shift.

In the past few years, however, there has been renewed interest in the prospects of [C I] as a molecular gas tracer. The CHAMP+ and FLASH instruments on the APEX telescope<sup>2</sup> have allowed both [C I] lines to be studied with reasonable sensitivity from one of the best sites on the planet, and ALMA<sup>3</sup> will allow these lines to be studied with much greater sensitivity and angular resolution once bands 8 and 10 are commissioned. Moreover, in the longer term, CCAT<sup>4</sup> will be able to rapidly map [C I] emission over large areas of the sky with good sensitivity. The time is therefore ripe for an in-depth look at what [C I] emission can tell us about molecular clouds, using state-of-the-art numerical simulations.

In this paper, we take the first steps towards this goal. We present results from a simulation of the chemical, thermal and dynamical evolution of a  $10^4 M_{\odot}$  turbulent molecular cloud illuminated by the standard ISRF, and examine in detail how the neutral atomic carbon is distributed in this cloud. We also make synthetic emission maps of the resulting [C I] lines, and investigate how much we can learn about the cloud by looking at this emission. Although our focus in this paper is the detailed analysis of a single simulation, we plan to follow this up in future work with a much broader parameter study.

The plan of the paper is as follows. In Section 2, we present the numerical approach used to simulate the cloud and generate the synthetic emission maps. We also outline the initial conditions used for our simulation. Our main results are presented in Section 3, where we examine the chemical and thermal state of the gas in the cloud, and investigate what we can learn about the properties of the cloud from the [C I] emission. Finally, in Section 4 we present our conclusions.

## 2 METHOD

### 2.1 Hydrodynamical model

The chemical and thermal evolution of the gas in our model cloud is simulated using a modified version of the GADGET 2 smoothed particle hydrodynamics (SPH) code (Springel 2005). Our modifications include a simplified treatment of the gas chemistry, based on the work of Glover & Mac Low (2007a,b) and Nelson & Langer (1999), and described in more detail in Glover & Clark (2012b), a detailed atomic and molecular cooling function (Glover et al. 2010), and a treatment of the attenuation of the ISRF within the cloud using the TREECOL algorithm (Clark, Glover & Klessen 2012a). The same code has previously been used to model star formation in molecular clouds with a variety of metallicities (Glover & Clark 2012c), the formation of GMCs from converging flows of atomic gas (Clark et al. 2012b), and the thermal state of the dense Galactic Centre molecular cloud known as the ‘Brick’ (Clark et al. 2013). More

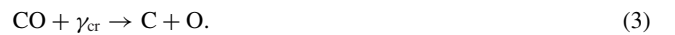
extensive discussions of the numerical details of the code can be found in these references. Here, in the interests of brevity, we focus only on a small number of changes that we have made to the code compared to the version described in these previous works.

The most important change that we have made involves our treatment of CO photodissociation. Previously, this was based on the work of Lee et al. (1996), but we have now updated our treatment to follow the recent paper by Visser, van Dishoeck & Black (2009). Comparison of runs performed with the old and new treatments of CO photodissociation demonstrates that the main difference in behaviour is a sharpening of the transition between regions dominated by neutral atomic carbon and regions dominated by CO, owing to the steeper dependence of the CO photodissociation rate on the visual extinction,  $A_V$ , found in the newer work.

Another important change that we have made to the chemical model is the inclusion of the effects of cosmic ray ionization of atomic carbon



and cosmic ray induced photodissociation of C and CO



These processes were not included in the version of the chemical model described in Glover & Clark (2012b). The rates that we have adopted for processes 1 and 2 are based on the values given in Woodall et al. (2007), but have been uniformly rescaled in order to be consistent with our adopted cosmic ray ionization rate. The rate for process 3 comes from Gredel, Lepp & Dalgarno (1987), and has been similarly rescaled.

Finally, we have also added a simple treatment of the chemistry of  $^{13}\text{CO}$ , using an approach similar to that in Szűcs, Glover & Klessen (2014). Specifically, we have extended the Nelson & Langer (1999) chemical network to also follow the abundances of  $^{13}\text{C}^+$ ,  $^{13}\text{C}$ ,  $^{13}\text{CO}$  and  $\text{H}^{13}\text{CO}^+$ . For simplicity, we assume that most of the reactions involving these species are not isotope-selective and hence adopt the same reaction rate coefficients for them as for their counterparts that involve  $^{12}\text{C}$ . However, we also include the reaction



together with the reverse reaction. The forward reaction is exothermic, and has a reaction rate coefficient  $k_{\text{frac}} = 2 \times 10^{-10} \text{ cm}^3 \text{ s}^{-1}$ , but the reverse reaction is endothermic and has a rate coefficient  $k_{\text{frac, inv}} = k_{\text{frac}} \exp(-35/T)$  (Watson, Anicich & Huntress 1976). In cold gas, this imbalance between the rates of the forward and reverse reactions leads to chemical fractionation, increasing the  $^{13}\text{CO}$ -to- $^{12}\text{CO}$  ratio significantly above the elemental  $^{13}\text{C}$ -to- $^{12}\text{C}$  ratio. In addition, we also account for the fact that in low extinction gas, it is easier to photodissociate  $^{13}\text{CO}$  than it is to photodissociate  $^{12}\text{CO}$ , owing to the greater effectiveness of CO self-shielding in the latter case (see e.g. Visser et al. 2009). This effect counteracts the effects of fractionation to some extent, but in conditions typical of local molecular clouds or photodissociation regions, fractionation generally dominates (Röllig & Ossenkopf 2013; Szűcs et al. 2014).

### 2.2 Post-processing

We post-process our simulation data to produce synthetic emission maps in the  $^3P_1 \rightarrow ^3P_0$  and  $^3P_2 \rightarrow ^3P_1$  fine structure lines of [C I] and the  $J = 1 \rightarrow 0$  line of  $^{12}\text{CO}$  and  $^{13}\text{CO}$  using the RADMC-3D

<sup>2</sup> <http://www.apex-telescope.org/>

<sup>3</sup> <http://www.almaobservatory.org/>

<sup>4</sup> <http://www.ccatobservatory.org/>

radiation transfer code<sup>5</sup>, and making use of atomic and molecular data (transition energies, radiative transition rates, collisional excitation rate coefficients, etc.) from the LAMDA data base<sup>6</sup> (Schöier et al. 2005). We calculate level populations using the large velocity gradient (LVG) approximation, as described in Shetty et al. (2011a,b). RADMC-3D cannot presently deal with SPH data directly, and so before we can use the code to generate our synthetic emission maps, we must first interpolate all of the necessary data to a Cartesian grid. By default, we use a cubic grid with a side length of  $5 \times 10^{19}$  cm (approximately 16 pc) and a grid resolution of  $256^3$  zones. In Appendix A2, we demonstrate that this grid resolution is sufficient to allow us to fully resolve the [C I] emission produced by our model clouds.

We use RADMC-3D to produce full position–position–velocity (PPV) cubes, with a velocity channel width of  $\Delta v = 0.094$  km s<sup>-1</sup>, and then produce maps of velocity-integrated intensity based on these PPV cubes. Our analysis in this paper focuses on these integrated intensity maps, and we defer any discussion of the velocity structure of the clouds, as traced by the [C I] emission, to a future paper. We account for unresolved small-scale velocity structure in the clouds by including a microturbulent contribution of  $0.2$  km s<sup>-1</sup> in the emission and absorption line widths computed for each grid zone. In practice, this choice has little influence on our integrated intensity maps. Finally, we note that for consistency with Shetty et al. (2011a,b) and with observational work in this field, we express the line intensities in terms of the brightness temperature,  $T_B$ , computed using the Rayleigh–Jeans approximation

$$T_B(\nu) = \left(\frac{c}{\nu}\right)^2 \frac{I_\nu}{2k_b}, \quad (5)$$

where  $I_\nu$  is the specific intensity and  $k_b$  is the Boltzmann constant. Our velocity-integrated intensity maps therefore have units of K km s<sup>-1</sup>.

### 2.3 Initial conditions

In this paper, we focus on the detailed analysis of the [C I] emission produced by a single model cloud. The model cloud we chose to study is very similar to one of the clouds studied in Glover & Clark (2012a,c). We adopted a cloud mass of  $10^4 M_\odot$ , which we simulated using two million SPH particles, giving us a mass resolution of  $0.5 M_\odot$ .<sup>7</sup> The cloud was initially spherical, with a radius of 6.3 pc, giving it an initial mean hydrogen nuclei number density of  $n_0 = 276$  cm<sup>-3</sup>. The initial gas temperature was set to 20 K and the initial dust temperature was set to 10 K, but as the cloud quickly relaxes to thermal equilibrium following the start of the simulation, our results are not sensitive to these particular choices.

We imposed a turbulent velocity field on the cloud, with a power spectrum  $P(k) \propto k^{-4}$ , where  $k$  is the wavenumber. The rms velocity of the turbulence was  $v_{\text{rms}} = 2.8$  km s<sup>-1</sup>, chosen so that the kinetic energy and gravitational energy of the cloud were initially equal. The turbulence was not driven during the simulation, but was instead allowed to freely decay.

We simulated the cloud using vacuum boundary conditions, but applied an external pressure term using the technique described in

Benz (1990) to minimize the effects of the pressure gradient that would otherwise exist at the edge of the cloud. We stress that the cloud is gravitationally bound and so would collapse and form stars even if this external pressure term were absent.

We took the metallicity of the cloud to be solar, with the standard local dust-to-gas ratio, and with total abundances of carbon-12, carbon-13 and oxygen relative to hydrogen given by  $x_{12\text{C}} = 1.4 \times 10^{-4}$ ,  $x_{13\text{C}} = x_{12\text{C}}/60$  and  $x_{\text{O}} = 3.2 \times 10^{-4}$ , respectively (Sembach et al. 2000). We also assumed that the cloud was initially atomic, with all of the carbon initially in the form of C<sup>+</sup>.

For the strength and spectral shape of the ISRF, we used the results of Draine (1978) in the ultraviolet and Mathis, Mezger & Panagia (1983) at longer wavelengths. The cosmic ray ionization rate for atomic hydrogen was set to  $\zeta_{\text{H}} = 10^{-17}$  s<sup>-1</sup>, and the corresponding ionization rates for the other chemical species were scaled accordingly, as described in Section 2.1 above.

We halted the simulation as soon as the first gas reached a density above our maximum density threshold  $n_{\text{th}} \sim 10^7$  cm<sup>-3</sup>. This density is too high to be reached purely by turbulent compression given our choice of rms turbulent velocity, and finding gas at this density therefore indicates that one or more cores have entered runaway gravitational collapse and will shortly begin forming stars. We found that this occurred at a time  $t = 1.98$  Myr after the beginning of the simulation.

## 3 RESULTS

In this section, we analyse the physical state of the cloud and the [C I] emission that it produces. Our analysis is carried out at  $t \simeq 2$  Myr, immediately before the onset of star formation in the cloud. We start by briefly examining the chemical and thermal state of the cloud (Section 3.1), before going on to examine how much of the cloud is traced by [C I] emission (Section 3.2). We next examine how well we can estimate the [C I] excitation temperature based on our synthetic emission maps (Section 3.3). Finally, we explore the usefulness of [C I] emission as a column density tracer in Section 3.4, and compare it with another commonly used column density tracer, <sup>13</sup>CO, in Section 3.5.

### 3.1 Chemical and thermal state of the cloud

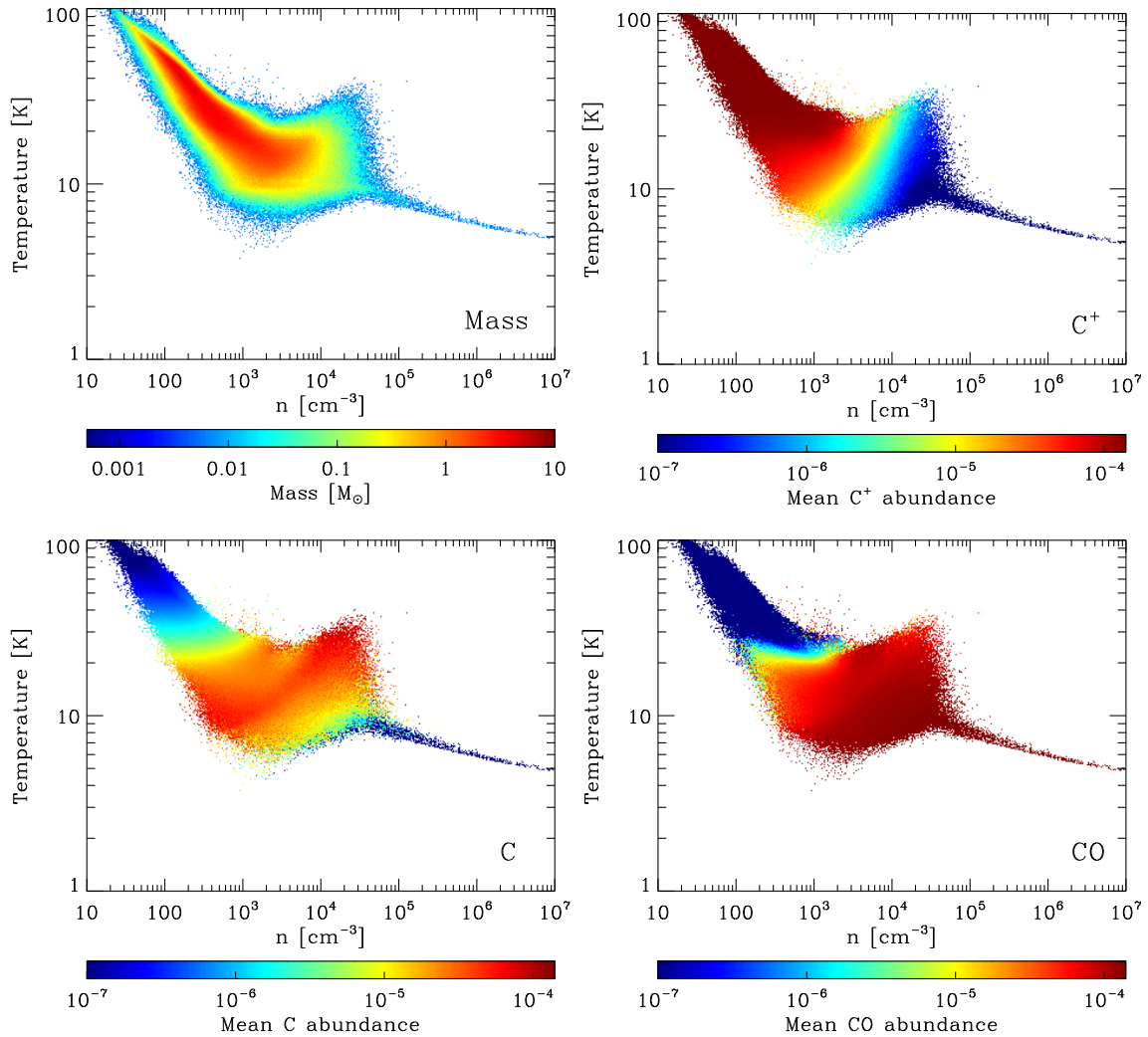
In the upper-left panel of Fig. 1, we show the 2D probability density function (PDF) of the gas temperature  $T$  and the hydrogen nuclei number density  $n$  in our model cloud at a point just before the onset of star formation. Several distinct features are apparent. At low densities, there is a strong inverse relationship between density and temperature. This corresponds to the part of the cloud that is optically thin to the ultraviolet portion of the ISRF. Cooling in this region is dominated by C<sup>+</sup> fine structure line emission, while heating comes primarily from the photoelectric effect. As the density increases, the balance between these two processes shifts in favour of cooling, leading to a drop in the temperature, as noted in a number of previous studies (see e.g. Larson 2005; Glover & Mac Low 2007b; Glover & Clark 2012a).

Above a number density  $n \sim 1000$  cm<sup>-3</sup>, the cloud temperature becomes largely independent of the density, although since there is considerable scatter in the temperature in this regime, it is somewhat misleading to describe the gas as isothermal. This scatter is related to the large scatter in the effective extinction seen by different regions of the gas that have similar densities (see Fig. 2), which leads to substantial variations in the efficiency of photoelectric heating, as well as in the chemical state of the gas. One notable feature in

<sup>5</sup> <http://www.ita.uni-heidelberg.de/~dullemond/software/radmc-3d/>

<sup>6</sup> <http://home.strw.leidenuniv.nl/~moldata/>

<sup>7</sup> We examine the effects of increasing the numerical resolution in Appendix A1.



**Figure 1.** Physical state of the cloud just before the onset of star formation. The top-left panel shows the 2D PDF of gas temperatures and densities within the cloud, weighted by the amount of mass present in each region of density–temperature space. The remaining panels show the same plot of densities and temperatures, but in this case, the shading indicates the mean fractional abundance of  $C^+$ , C or CO present at each point.

this regime is the distinct bump in the temperature distribution at  $n \sim 2 \times 10^4 \text{ cm}^{-3}$  and  $T \sim 20 \text{ K}$ , caused by  $H_2$  formation heating (Glover & Clark 2012a).

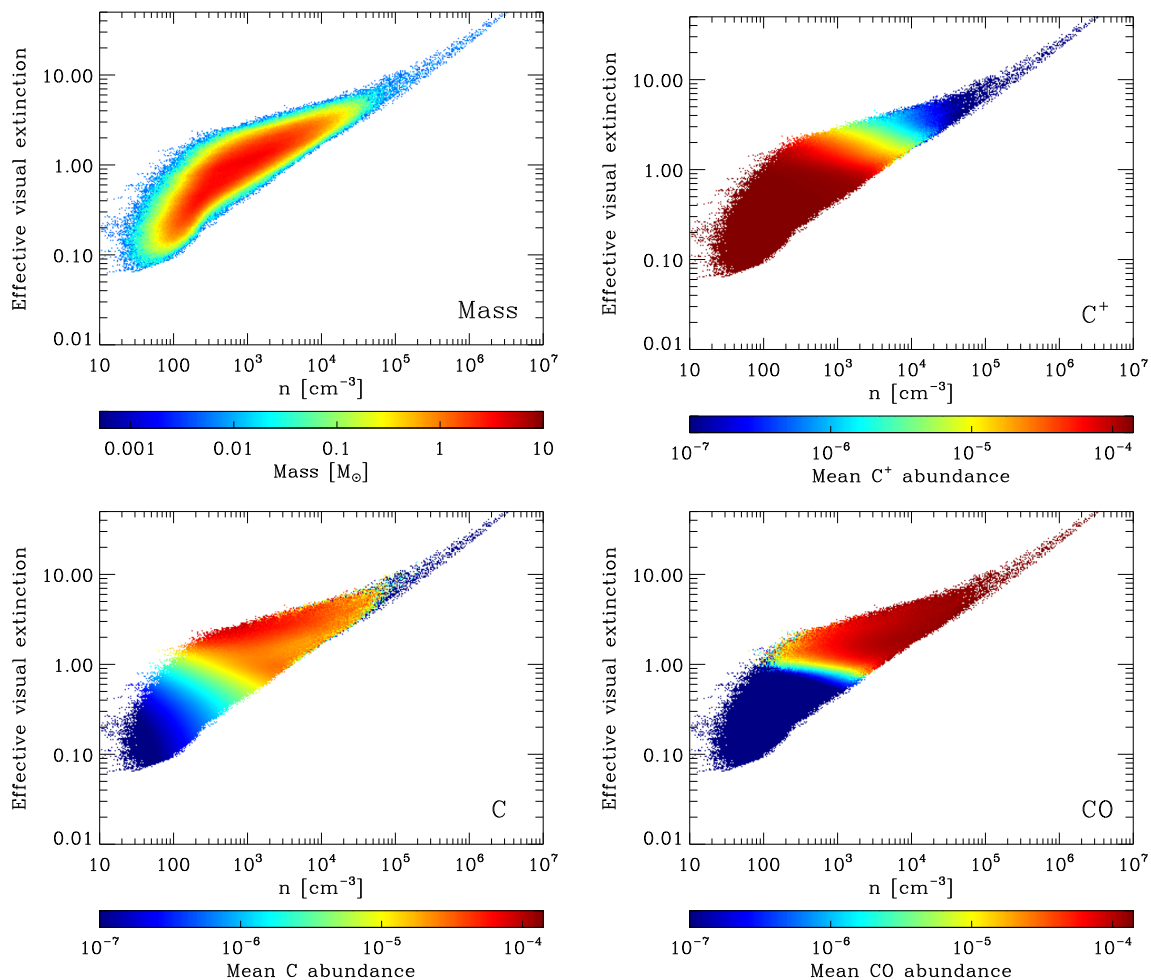
Finally, at  $n > 10^5 \text{ cm}^{-3}$ , the scatter in the gas temperature largely disappears, and the temperature once again begins to decrease with increasing density. This feature corresponds to the point at which the gas and dust temperatures become strongly coupled, owing to efficient thermal energy transfer between the gas and the dust. Above this density, the gas temperature closely tracks the dust temperature. Since the dust temperature is unaffected by velocity gradients within the gas and varies only weakly with  $A_V$  owing to the steep temperature dependence of the dust cooling rate ( $\Lambda_{\text{dust}} \propto T_{\text{dust}}^6$ ), most of the scatter in the temperature distribution disappears once we enter this regime.

If we now look at the remainder of the panels in Fig. 1, which illustrate the chemical state of the carbon in the gas as a function of temperature and density, we see that as we move to higher densities, we move from a regime dominated by  $C^+$  to one in which neutral atomic carbon dominates, and then finally to a CO-dominated regime. Neutral atomic carbon is present at a variety of different

densities in the range  $100 < n < 5 \times 10^4 \text{ cm}^{-3}$ , but becomes very rare at higher densities, where almost all of the available carbon is locked up in CO.

In addition, it is clear that there is little neutral atomic carbon present in the warmer gas with  $T > 30 \text{ K}$ . This is easy to understand, as temperatures  $T > 30 \text{ K}$  are found only in regions where the extinction is low, so that photoelectric heating is effective, and in these regions, photoionization of C to  $C^+$  occurs rapidly.

It is also interesting to look at how the chemical state of the gas varies as a function of extinction. However, in this case we need to be careful about how we quantify the extinction. A common choice is to work in terms of the line-of-sight value, which we will denote in this paper simply as  $A_V$ . Although this choice is simple, and is the same as the definition that we would use observationally, it is less than ideal when one is considering a turbulent cloud, as there is no guarantee that the extinction in other directions has much to do with the extinction along our particular line of sight. As an extreme example, consider the case where we happen to be looking along the long axis of a filament: we would see a high extinction, even



**Figure 2.** As Fig. 1, but for the density and the effective visual extinction,  $A_{V, \text{eff}}$  (see Section 3.1).

though the extinction in directions perpendicular to the filament may be small.

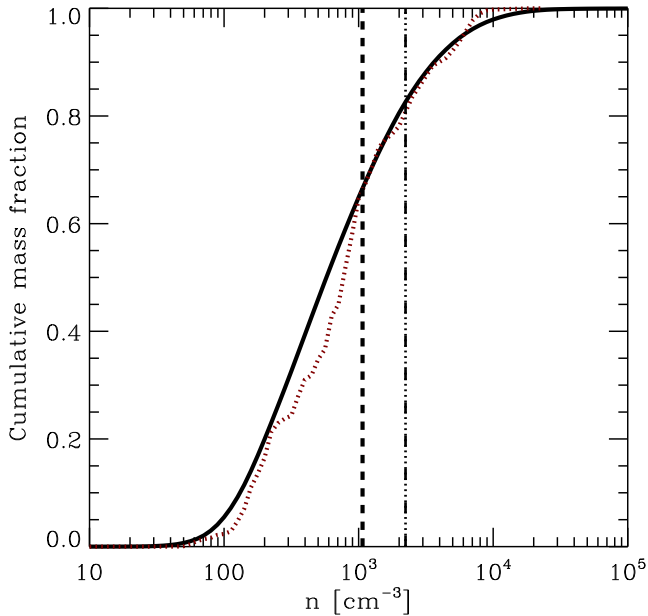
A better way to quantify the amount of extinction seen by a particular SPH particle is by means of a weighted sum over many different lines of sight from that particle to the edges of the cloud.<sup>8</sup> Fortunately, this is precisely the information that our `TREECOL` algorithm provides. As explained in more detail in Appendix A3 and in Clark et al. (2012a), the `TREECOL` algorithm provides us with a  $4\pi$  steradian map of the column density distribution surrounding each of our SPH particles. Each of these column density distributions is discretized using the `HEALPIX` pixelation scheme, so that every SPH particle has a column density map associated with it consisting of  $N_{\text{pix}}$  equal-area ‘sky’ pixels. We can use these column density maps to define an effective visual extinction,  $A_{V, \text{eff}}$ , for each SPH particle with the help of the following expression:

$$A_{V, \text{eff}} = -\frac{1}{3.5} \ln \left[ \frac{1}{N_{\text{pix}}} \sum_{i=1}^{N_{\text{pix}}} \exp(-3.5 \{A_{V, i} + A_{V, \text{local}}\}) \right]. \quad (6)$$

<sup>8</sup> Note that by treating the extinction in this fashion, we are implicitly assuming that the effects of scattering (as opposed to true absorption) are relatively unimportant. This simplification is a matter of computational expedience, but is unlikely to have a large effect on our results.

Here,  $A_{V, i}$  is the extinction corresponding to the column density in the direction defined by ‘sky’ pixel number  $i$ , and for each SPH particle, we sum over its  $N_{\text{pix}}$  associated ‘sky’ pixels. Our choice of weighting factor is motivated by the fact that the CO photodissociation rate scales with the visual extinction as  $R_{\text{pd}} \propto e^{-3.5A_V}$  (Visser et al. 2009). However, we have also explored the effects of using a smaller weighting factor of 2.5 (motivated by the fact that the photoelectric heating rate scales with  $A_V$  as  $e^{-2.5A_V}$ ; see e.g. Bergin et al. 2004) but find that in practice our results are not particularly sensitive to this choice. Finally, we also include in our estimate a term  $A_{V, \text{local}}$ , corresponding to extinction arising within the gas represented by the SPH particle itself (which is not included in our `TREECOL` calculation). We assume that this local contribution is proportional to the product of the local density and the smoothing length of the SPH particle.

In Fig. 2, we show how the chemical state of the gas varies as a function of density and  $A_{V, \text{eff}}$ . We see that although density and effective extinction are correlated, there is significant scatter in the relationship, particularly at low densities. This scatter can amount to as much as an order of magnitude variation in  $A_{V, \text{eff}}$  at a given density, and since photochemical rates typically depend exponentially on  $A_{V, \text{eff}}$ , the scatter in their values at a given density can be far larger (cf. Glover et al. 2010, who find a similar result for turbulent clouds without self-gravity).

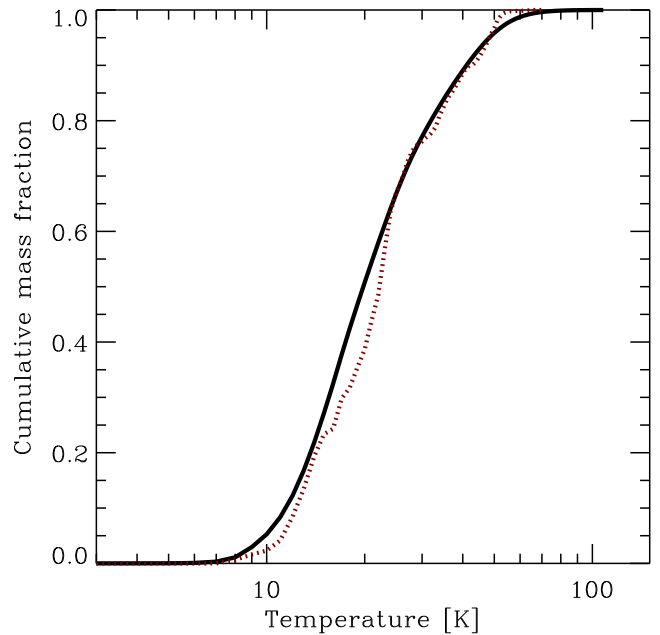


**Figure 3.** Cumulative fraction of the total cloud mass located at or below number density  $n$  (solid line), plotted as a function of  $n$ . We also show the cumulative atomic carbon mass fraction (dotted line), i.e. the fraction of the total amount of atomic carbon located at or below  $n$ , plotted as a function of  $n$ . The vertical dashed line indicates the critical density of the [C I]  $1 \rightarrow 0$  transition, computed assuming that all of the hydrogen is in molecular form, and that the gas temperature is 20 K. The vertical triple dot dashed line indicates the critical density for the  $2 \rightarrow 1$  transition, computed with the same assumptions.

Fig. 2 also shows us that  $C^+$  dominates in the region with  $A_{V, \text{eff}} < 1$ , as we would expect given the effectiveness of carbon photoionization at low  $A_{V, \text{eff}}$ . There is also some neutral atomic carbon in this region, but very little CO. Neutral atomic carbon begins to take over from  $C^+$  above  $A_{V, \text{eff}} = 1$ , peaking at  $A_{V, \text{eff}} \sim 2-3$ , and then declining at higher extinctions as CO starts to dominate.

We see, therefore, that the behaviour of  $C^+$ , C and CO in our turbulent clouds is very similar to that seen in 1D photodissociation region (PDR) cloud models, which find a similar layering as one moves from low to high extinctions. The main differences here are the much larger scatter that we have in the turbulent case, owing to the scatter in the  $n-A_{V, \text{eff}}$  relationship, and the fact that the regions with  $A_{V, \text{eff}} \sim 2-3$  where C dominates are not found only at the edges of the cloud, but instead are distributed throughout the cloud.

It is also useful to quantify how much of the total mass of neutral atomic carbon in the cloud is located at each density and temperature. In Fig. 3, we show how the mass of the cloud below a density  $n$  varies as we vary  $n$ . We see that the majority of the gas is located in the density range  $100 < n < 10^4 \text{ cm}^{-3}$ , with less than 10 per cent to be found at higher or lower densities. We also show in this figure the same quantity for the neutral atomic carbon, i.e. how much of the total mass of C is located below a density  $n$  for a range of different values of  $n$ . This follows the line for the total gas mass quite closely, although the fraction of the mass of neutral carbon at  $n < 1000 \text{ cm}^{-3}$  is a little smaller than the fraction of the total mass at these densities, since this lower density material contains significant amounts of  $C^+$ . If we compare the distribution of the neutral carbon with the critical densities for the  $1 \rightarrow 0$  and  $2 \rightarrow 1$  transitions (illustrated by the vertical lines), we see that roughly 60 per cent of the carbon is located below the critical density for the  $1 \rightarrow 0$  transition and roughly 80 per cent is located below the



**Figure 4.** Cumulative fraction of the total cloud mass located at or below gas temperature  $T$  (solid line), plotted as a function of  $T$ . We also show the cumulative atomic carbon mass fraction (dotted line) as a function of  $T$ .

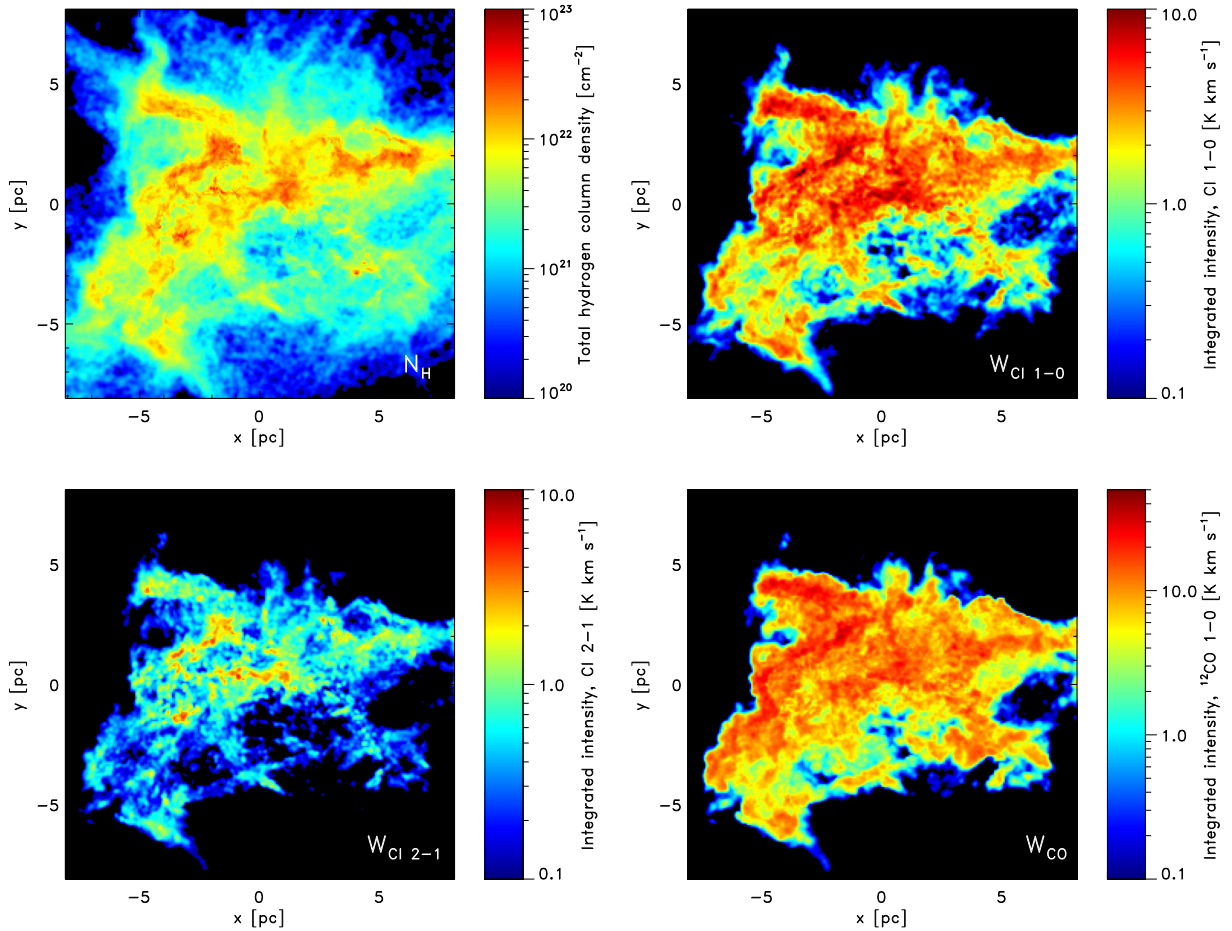
critical density for the  $2 \rightarrow 1$  transitions. The values for the critical densities plotted here were computed assuming a gas temperature of 20 K, but in practice have little dependence on the temperature. We can therefore conclude that if the [C I] emission is optically thin, much of it will be subthermal, meaning that analyses that assume local thermodynamic equilibrium (LTE) level populations for the carbon may give misleading results. We will return to this point in Section 3.3.

Finally, it is also interesting to perform a similar analysis for the cumulative mass fractions of total gas and neutral atomic carbon as a function of temperature. This is illustrated in Fig. 4. We see that almost half of the total gas mass is located in the temperature range  $10 < T < 20 \text{ K}$ , and that there is almost no gas with  $T < 10 \text{ K}$  or  $T > 100 \text{ K}$ . We also see that, once again, the result for the neutral carbon closely tracks that for the total gas mass.

### 3.2 How much of the cloud is traced by [C I] emission?

We saw in the previous section that the range of densities containing most of the neutral atomic carbon is very similar to the range of densities containing the bulk of the cloud's mass. Moreover, although most of the atomic carbon is found in gas with densities below the critical densities for the  $1 \rightarrow 0$  and  $2 \rightarrow 1$  transitions, it does not lie very far below  $n_{\text{crit}}$ . Therefore, although we expect the emission to be subthermal, it will not be strongly subthermal. Furthermore, the neutral atomic carbon is found primarily in gas with temperatures in the range  $10 < T < 50 \text{ K}$ , and these temperatures are high enough to excite the  $1 \rightarrow 0$  transition relatively easily.

Taken together, these factors suggest that [C I] emission should be a good tracer of the gas in the cloud. To investigate whether this is the case, we have used RADMC-3D to make maps of the velocity-integrated intensity of the [C I]  $1 \rightarrow 0$  and  $2 \rightarrow 1$  lines produced by the cloud. These are shown in Fig. 5, together with the cloud column density and the integrated intensity in the  $^{12}\text{CO } J = 1 \rightarrow 0$  transition. We see that there is a good correlation between the structure that we see in the column density map and in the [C I]  $1 \rightarrow 0$  emission



**Figure 5.** Top left: map of the total column density of hydrogen nuclei,  $N_{\text{H}}$ . The area shown is approximately 16 pc by 16 pc and contains most of the mass of the cloud. Top right: map of velocity-integrated intensity in the [C I]  $1 \rightarrow 0$  transition, computed using `RADMC-3D` with the LVG approximation. Bottom left: the same as in the top-right panel, but for the [C I]  $2 \rightarrow 1$  transition. Bottom right: the same as in the top-right panel, but for the  $J = 1 \rightarrow 0$  transition of  $^{12}\text{CO}$ .

map. The [C I] emission traces most of the structure down to a total hydrogen column density of approximately  $N_{\text{H}} = 10^{21} \text{ cm}^{-2}$ , but does not pick out the low-density gas at the edges of the cloud. Comparing this map with the CO emission map, we see that both tracers pick out the same basic cloud structure, but that [C I] appears to do a slightly better job close to the edges of the cloud. The [C I]  $2 \rightarrow 1$  emission also seems to be a good tracer of cloud structure in the denser regions, but becomes extremely faint towards the edges of the cloud.

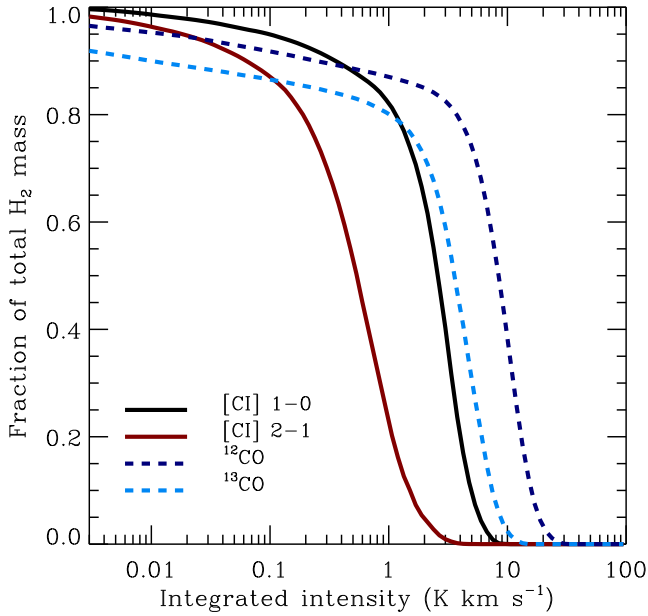
The widespread [C I] emission that we see in our map is very different from the limb-brightened emission predicted by simple 1D PDR models, but is qualitatively consistent with the predictions of clumpy PDR models and with observations of [C I] in real GMCs, which typically find a good correlation between the [C I] and CO emission (see e.g. Stark & van Dishoeck 1994; Kramer et al. 2008). This is a testament to the central role that turbulence plays in structuring the cloud. As we have already seen, the neutral atomic carbon in our model cloud is found at a similar range of effective visual extinctions to those that we would expect based on PDR model results. The key difference is that gas with this effective extinction is not located in a single coherent structure at the edge of the cloud. Because of the turbulent motions, the cloud is highly structured, allowing radiation to penetrate deep into the interior (see also Bethell et al. 2004; Bethell, Zweibel & Li 2007). The [C I] emitting surfaces that we see are therefore found throughout the cloud and are present

along most lines of sight. The crucial role that density substructure within GMCs plays in explaining the observed [C I] emission has been understood for some time (see e.g. Genzel et al. 1988; Stutzki et al. 1988; Plume, Jaffe & Keene 1994; Kramer et al. 2004), and our results strongly support this picture.

Having established that the [C I]  $1 \rightarrow 0$  line appears to be a promising gas tracer, the next step is to quantify what fraction of the molecular gas in the cloud it allows us to observe. A simple starting point is to compute what fraction of the total  $\text{H}_2$  mass is found along lines of sight with [C I] integrated intensities greater than some minimum value  $W_{\text{C I},1-0,\text{min}}$ , and then to look at how this value changes as we vary  $W_{\text{C I},1-0,\text{min}}$ . The results of this analysis are shown in Fig. 6, together with similar results for the [C I]  $2 \rightarrow 1$  line, the  $^{12}\text{CO } J = 1 \rightarrow 0$  line and the  $^{13}\text{CO } J = 1 \rightarrow 0$  line.

We see that for all of the lines, the fraction of the cloud that we detect is a strong function of the minimum integrated intensity. In the case of [C I]  $1 \rightarrow 0$ , almost 80 per cent of the molecular mass of the cloud is located along lines of sight with integrated intensities in the narrow range  $1 < W_{\text{C I},1-0,\text{min}} < 5 \text{ K km s}^{-1}$ . In the case of the [C I]  $2 \rightarrow 1$  line, we see similar behaviour, but the minimum integrated intensity required in order to detect any given amount of the molecular gas is typically at least a factor of a few smaller.

If we compare this with the behaviour of  $^{12}\text{CO}$ , we see that if our minimum integrated intensity for both lines is greater than



**Figure 6.** Cumulative fraction of the  $\text{H}_2$  mass in the cloud traced by the [C I]  $1 \rightarrow 0$  transition (the black solid line) and the  $2 \rightarrow 1$  transition (the red solid line), plotted as a function of the minimum integrated intensity in the line. The same quantity is also shown for the  $^{12}\text{CO}$   $J = 1 \rightarrow 0$  transition (upper blue dashed line) and the  $^{13}\text{CO}$   $J = 1 \rightarrow 0$  transition (lower blue dashed line).

$0.3 \text{ K km s}^{-1}$ , then  $^{12}\text{CO}$  is a superior tracer of the molecular mass. Only once we start to look along very faint sightlines does the [C I] emission start to trace regions that would be unobserved in  $^{12}\text{CO}$ . For  $^{13}\text{CO}$ , the story is rather different. For integrated intensities greater than around  $1 \text{ K km s}^{-1}$ , the behaviour of the  $^{13}\text{CO}$   $J = 1 \rightarrow 0$  line and the [C I]  $1 \rightarrow 0$  line is very similar. At lower integrated intensities, the [C I] line becomes the better tracer, allowing one to study the 15–20 per cent of the molecular mass of the cloud that is not well traced by  $^{13}\text{CO}$ .

### 3.3 Determining the [C I] excitation temperature

As a first step towards quantifying the properties of the [C I] emission produced by our model cloud, we investigate in this section how accurately one can infer the excitation temperature of the carbon atoms based on the synthetic emission maps. For an atomic or molecular system with a lower energy level  $l$  and an upper energy level  $u$ , we can define an associated excitation temperature

$$T_{\text{ex}} \equiv -\frac{E_{ul}}{k} \left[ \ln \left( \frac{g_l f_u}{g_u f_l} \right) \right]^{-1}, \quad (7)$$

where  $f_l$  and  $f_u$  are the fractional level populations of the lower and upper levels,  $g_l$  and  $g_u$  are the associated statistical weights of these levels, and  $E_{ul}$  is the energy separation between the two levels. In the case of neutral atomic carbon, we have three fine structure levels, with total angular momentum  $J = 0, 1, 2$ , and hence three different excitation temperatures, corresponding to the three different ways in which we can pair up two out of these three levels. In local thermodynamic equilibrium, all three excitation temperatures are equal to each other and to the kinetic temperature of the gas,  $T_K$ . If the carbon is not in LTE, however, then the excitation temperatures may differ from each other. Because the critical densities of the  $1 \rightarrow 0$  and  $2 \rightarrow 1$  transitions are quite similar, it is often assumed that

the excitation temperatures corresponding to these transitions are equal, but as we will see below, this is not always a safe assumption.

One common technique for estimating  $T_{\text{ex}}$  from maps of [C I] emission involves the assumption that the [C I] lines are optically thin and that the contribution of the ISRF (including the CMB) at the frequencies of the [C I] lines can be neglected (see e.g. Frerking et al. 1989; Schneider et al. 2003). In this case, the column densities of carbon atoms in the  $J = 1$  and  $2$  states are directly proportional to the integrated intensities of the  $1 \rightarrow 0$  and  $2 \rightarrow 1$  lines, and we can estimate  $T_{\text{ex}}$  using the expression (Schneider et al. 2003)

$$T_{\text{ex,est}} = \frac{h\nu_{21}}{k} \left[ \ln \left( \frac{N_1 g_2}{N_2 g_1} \right) \right]^{-1}, \quad (8)$$

$$= 38.8 \left[ \ln \left( \frac{2.11}{R} \right) \right]^{-1} \text{ K}, \quad (9)$$

where  $R = \int T_{B,2-1} dv / \int T_{B,1-0} dv$  is the ratio of the integrated intensity of the two lines.

Alternatively, if the [C I] emission is optically thick, we can determine the excitation temperature using the expression (Dickman 1978; Wilson, Rohlfs & Hüttemeister 2013)

$$T_{\text{ex,est,2}} = \frac{23.6}{\ln \left[ 1 + 23.6 / (T_{B,1-0,\text{max}}) \right]}, \quad (10)$$

where  $T_{B,1-0,\text{max}}$  is the maximum value of the brightness temperature along the line of sight, and where we have again assumed that the energy density of any background radiation field (the ISRF, the CMB, etc.) at the frequency of the line is negligible in comparison to the emission produced within the cloud itself.

In Fig. 7, we show the results obtained using these two approaches. In both cases, we restrict the region plotted to the set of sightlines with  $W_{\text{C I},1-0} > 0.1 \text{ K km s}^{-1}$ . By enforcing this restriction, we avoid the poorly resolved regions at the edge of the cloud that are too faint in [C I] to be observable with current instruments. We see from this figure that equation (9) predicts values for  $T_{\text{ex}}$  of around 15–20 K, with significantly higher values of up to 40 K along the lines of sight passing through the densest gas. On the other hand, equation (10) predicts values of  $T_{\text{ex}}$  that are close to 10 K through much of the cloud, dropping to only a few K at the edges of the cloud.

For comparison, we also show in Fig. 7 the mean excitation temperature along each sightline for the  $1 \rightarrow 0$  transition. These values are derived directly from the level populations computed during our radiation transfer calculations. To compute this mean value, we first compute  $T_{\text{ex}}$  in each cell in our three-dimensional grid using the expression

$$T_{\text{ex}} = -\frac{h\nu_{10}}{k} \left[ \ln \left( \frac{n_1}{3n_0} \right) \right]^{-1}, \quad (11)$$

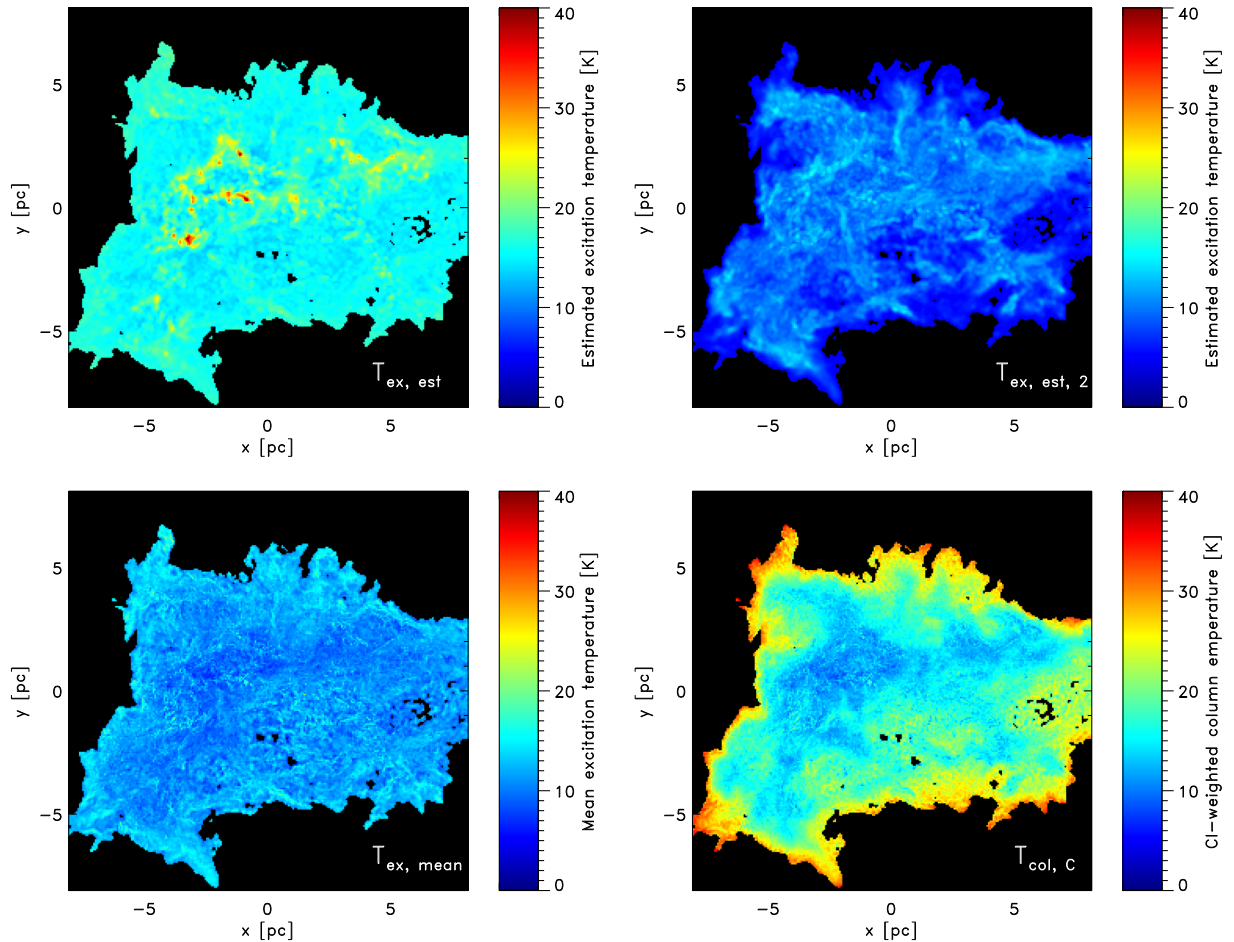
where  $n_0$  and  $n_1$  are the number densities of neutral atomic carbon in the  $J = 0$  and  $1$  levels, respectively. We then compute a weighted mean value along each sightline, using the local number density of atomic carbon as our weighting function:

$$T_{\text{ex,mean}} = \frac{\sum_k T_{\text{ex}}(k) n_C(k)}{\sum_k n_C(k)}, \quad (12)$$

where we sum over all cells along a line of sight.

Comparison of the different maps shows that both of our approximations give biased views of  $T_{\text{ex}}$ . Equation (9) predicts excitation temperatures that are systematically too large, particularly for the





**Figure 7.** Top left: estimate of the mean excitation temperature of the neutral carbon atoms along each line of sight, computed from the ratio of the integrated intensities of the [C I]  $2 \rightarrow 1$  and  $1 \rightarrow 0$  transitions (equation 9). This estimate assumes that the gas is optically thin in both transitions, and hence yields artificially high values towards optically thick regions. Top right: an alternative estimate of  $T_{\text{ex}}$ , computed using equation (10), based on a procedure introduced by Dickman (1978). This estimate assumes that the [C I]  $1 \rightarrow 0$  line is optically thick and so underestimates  $T_{\text{ex}}$  along optically thin sightlines. Bottom left: mean value of  $T_{\text{ex}}$  for the  $1 \rightarrow 0$  transition along each sightline, computed as a weighted average of the value in each grid cell, with the number density of atomic carbon atoms used as the weighting function (equation 12). Bottom right: column temperature of the carbon atoms along each line of sight, computed using equation (13).

densest lines of sight. At low column densities, this error comes about because equation (9) is actually a measure of the excitation temperature associated with the  $2 \rightarrow 1$  transition. Although this is often assumed to be the same as the excitation temperature associated with the  $1 \rightarrow 0$  transition, we find that in practice the two excitation temperatures differ by several K in much of the [C I] emitting gas. Towards dense regions, the performance of equation (9) becomes even worse because of its neglect of the effects of line opacity. If one or both of the [C I] lines becomes optically thick, then the ratio of integrated brightness temperatures for the two transitions is no longer proportional to the ratio of the column densities of the  $J = 1$  and 2 level, and hence equation (9) is no longer valid. If the  $2 \rightarrow 1$  transition becomes optically thick while the  $1 \rightarrow 0$  transition remains optically thin, then this leads to an underestimate of  $N_2/N_1$  and hence an underestimate of the excitation temperature. In the far more likely case that the  $1 \rightarrow 0$  transition becomes optically thick while the  $2 \rightarrow 1$  transition remains optically thin (see Appendix B), then we overestimate  $N_2/N_1$  and hence overestimate  $T_{\text{ex}}$ , potentially by a large amount.

As one would expect, equation (10) performs much better along the optically thick sightlines, predicting values for  $T_{\text{ex}}$  that are within a few per cent of the true ones, providing that we restrict our attention to lines of sight with  $W_{\text{C},1-0} > 3 \text{ K km s}^{-1}$ . However, it systematically underestimates  $T_{\text{ex}}$  along lines of sight that have low  $\tau$  and low  $W_{\text{C},1-0}$ , such as those near the edges of the cloud. In practice, the fact that the real excitation temperature does not vary very strongly over the cloud means that we can construct a reasonably accurate estimate of  $T_{\text{ex}}$  by using equation (10) for lines of sight with  $W_{\text{C},1-0} > 3 \text{ K km s}^{-1}$  and adopting a constant value for lines of sight with lower  $W_{\text{C},1-0}$  that is the mean of the value inferred for the bright sightlines.

It is also interesting to compare the excitation temperature of the gas with the actual kinetic temperature. Since we are observing the cloud in projection, our observations inevitably involve some degree of averaging of temperatures along each line of sight. Therefore, the appropriate quantity to compare to our derived excitation temperatures is some form of line-of-sight averaged kinetic temperature, or ‘column’ temperature (Shetty et al. 2009; Molina et al., in preparation). In the present case, we expect that the largest

contribution to the observed [C I] emission will come from the gas with the highest number density of neutral carbon. It therefore makes sense to use as a weighted average

$$T_{\text{col,C}}(i, j) = \frac{\sum_k T_{\text{kin}}(i, j, k) n_{\text{C}}(i, j, k)}{\sum_k n_{\text{C}}(i, j, k)}. \quad (13)$$

Here,  $T_{\text{kin}}(i, j, k)$  is the kinetic temperature of the gas in the cell with coordinates  $(i, j, k)$  and  $n_{\text{C}}(i, j, k)$  is the number density of neutral carbon atoms in the same cell.

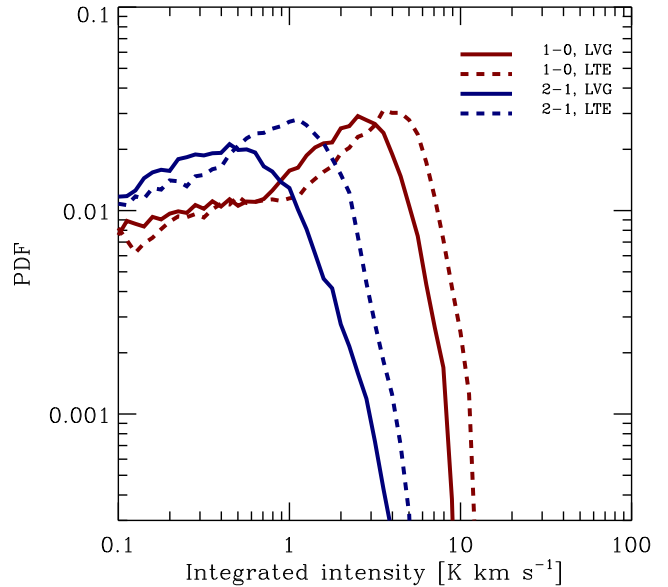
The resulting column temperature map is shown in panel (d) of Fig. 7. If we compare it with the map of mean excitation temperatures, we see that there is relatively good agreement between  $T_{\text{col,C}}$  and  $T_{\text{ex,mean}}$  along lines of sight that pass through the highest density parts of the cloud, but that the values diverge significantly as we move towards the edges of the [C I] map and look along lines of sight probing lower density gas. This behaviour is simple to explain. Along high column density lines of sight, most of the [C I] emission that we see comes from high density gas that lies close to or above the [C I] critical density. The carbon atoms in this gas are in LTE, and hence  $T_{\text{ex}} \simeq T_{\text{kin}}$ . Along lower column density lines of sight, the mean kinetic temperature of the gas is higher, since the mean gas density is lower, and the gas is also less well shielded from the external radiation field. However, the lower gas density also means that most of the carbon atoms are in regions with  $n < n_{\text{crit}}$ , and hence are subthermally excited, with  $T_{\text{ex}} < T_{\text{kin}}$ . (Similar results have recently been reported for  $^{12}\text{CO } J = 1 \rightarrow 0$  line emission by Molina et al., in preparation). In practice, we find that if we average over all lines of sight with detectable [C I] emission, the resulting mean  $T_{\text{ex}}$  is around 30 per cent lower than the mean column temperature. We can reduce the discrepancy to  $\sim 10$  per cent if we restrict our attention to lines of sight with  $W_{\text{C I},1-0} > 4 \text{ K km s}^{-1}$ , and to  $\sim 5$  per cent if we look only at regions with  $W_{\text{C I},1-0} > 6 \text{ K km s}^{-1}$ .

An important lesson that we can draw from these results is that, contrary to what is often assumed, a significant fraction of the neutral atomic carbon in molecular clouds is not in LTE, and is only subthermally excited. We can confirm this interpretation by comparing the PDF of the integrated intensities of the two [C I] transitions that we obtain from our LVG analysis with the corresponding PDFs that we get if we assume LTE level populations throughout the gas (Fig. 8). We see that the LVG approach produces systematically fainter emission than the LTE analysis, consistent with what we expect if a significant proportion of the carbon atoms are subthermally excited.

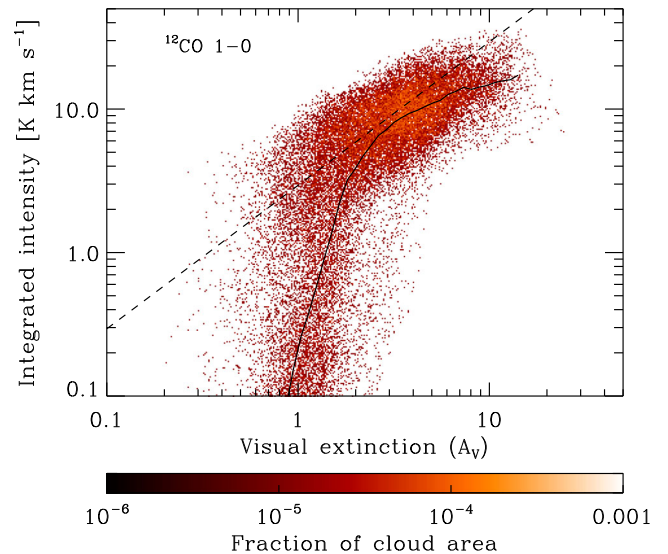
### 3.4 [C I] emission as a probe of column densities

#### 3.4.1 Tracing the total column density

CO emission is often used as a tracer of column densities within molecular clouds. However, its ability to do this is hampered by a couple of significant problems. It has been understood for a long time that at high column densities,  $^{12}\text{CO}$  emission becomes optically thick, meaning that it is no longer a good tracer of  $N_{\text{CO}}$  or of the total column density of the cloud (see e.g. Scoville & Solomon 1974, for an early discussion of this point). On the other hand, at low column densities,  $W_{\text{CO}}$  falls off sharply with decreasing  $A_{\text{V}}$  owing to the effects of CO photodissociation (Goodman, Pineda & Schnee 2009; Shetty et al. 2011a). This is illustrated in Fig. 9, where we plot the 2D PDF of  $W_{\text{CO}}$  versus  $A_{\text{V}}$  that we find in our simulation. Although the two quantities are clearly correlated, the correlation is close to linear only over a small range of visual extinctions around  $A_{\text{V}} \sim 3$ . At higher  $A_{\text{V}}$ , the correlation becomes sublinear, owing



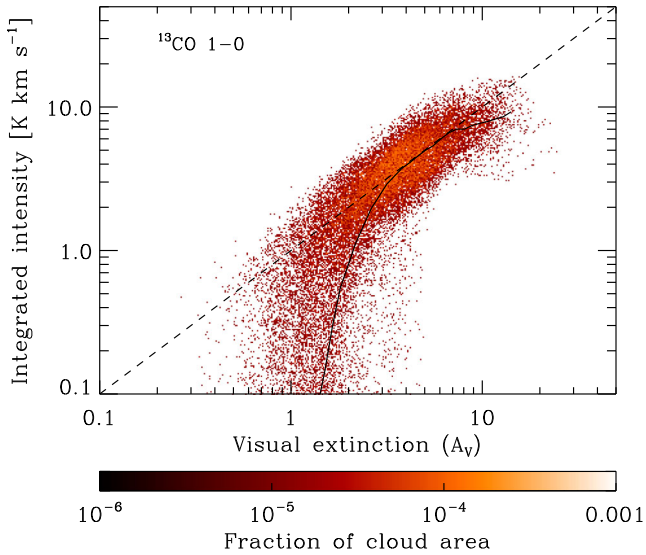
**Figure 8.** PDF of the velocity-integrated emission in the [C I]  $1 \rightarrow 0$  (red) and  $2 \rightarrow 1$  (blue) transitions. The solid lines give the results of our LVG analysis, while the dashed lines show the distribution of integrated intensities that we get if we assume LTE level populations. The difference between the LVG and LTE results demonstrates that a significant fraction of the carbon atoms are subthermally excited.



**Figure 9.** 2D PDF of the integrated intensity in the  $^{12}\text{CO } J = 1 \rightarrow 0$  line,  $W_{\text{CO}}$ , plotted as a function of the visual extinction. The dashed line indicates a linear relationship between  $W_{\text{CO}}$  and  $A_{\text{V}}$  and is there to guide the eye. The solid line shows the geometric mean of  $W_{\text{CO}}$  as a function of  $A_{\text{V}}$ . The points are colour-coded according to the fraction of the total cloud area that they represent.

to the effects of the line opacity, while at lower  $A_{\text{V}}$ , there is a rapid fall-off in  $W_{\text{CO}}$  owing to the loss of CO from the gas due to photodissociation. Moreover, it is also clear that even in the regime where  $W_{\text{CO}}$  and  $A_{\text{V}}$  have a correlation that is close to linear, there is substantial scatter around this correlation.

We can improve on this situation by looking at emission from  $^{13}\text{CO}$  instead of  $^{12}\text{CO}$ . The abundance of carbon-13 in the interstellar medium is much smaller than that of carbon-12, and hence the



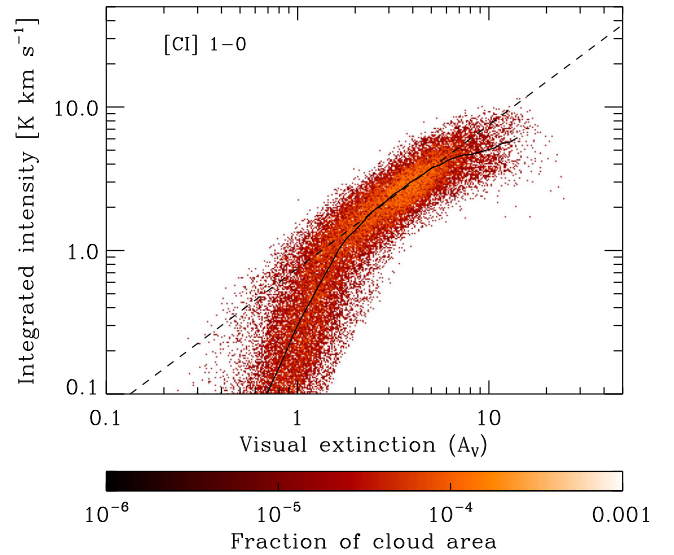
**Figure 10.** As Fig. 9, but for the  $J = 1 \rightarrow 0$  transition of  $^{13}\text{CO}$ . To compute the  $^{13}\text{CO}$  emission map, we have assumed a constant ratio of 60:1 between  $^{12}\text{CO}$  and  $^{13}\text{CO}$ .

$^{13}\text{CO}$  abundance is much smaller than the  $^{12}\text{CO}$  abundance. Consequently, the optical depths of the  $^{13}\text{CO}$  rotational transitions are much smaller than for  $^{12}\text{CO}$ , making  $^{13}\text{CO}$  a more reliable tracer of the gas column density along high extinction sightlines (Pineda et al. 2008; Goodman et al. 2009). This is illustrated in Fig. 10, where we show the 2D PDF of the integrated intensity in the  $J = 1 \rightarrow 0$  line of  $^{13}\text{CO}$ ,  $W_{13\text{CO}}$ , versus the visual extinction.

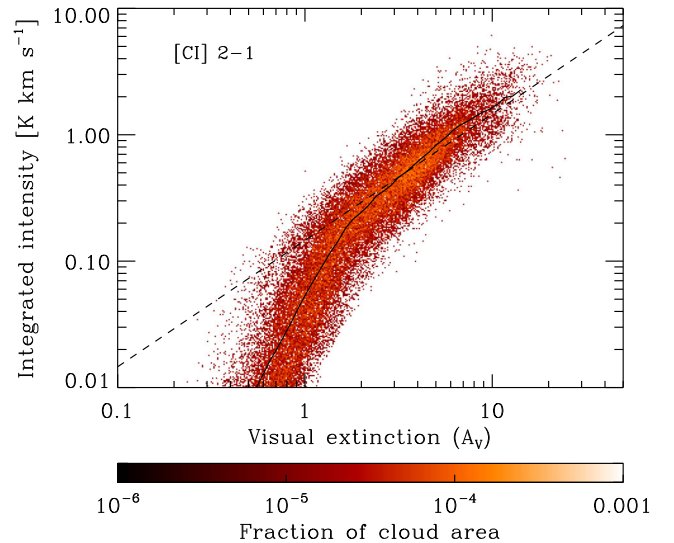
Fig. 10 demonstrates that, as expected,  $^{13}\text{CO}$  is a significantly better tracer of the column density than  $^{12}\text{CO}$ . The relationship between  $W_{13\text{CO}}$  and  $A_V$  is extremely close to linear for visual extinctions in the range  $3 < A_V < 10$ , although there are hints that opacity effects are beginning to become important at  $A_V \sim 10$ . However, as in the case of  $^{12}\text{CO}$ , the relationship breaks down at low  $A_V$  owing to the photodissociation of CO.

Since neutral atomic carbon is primarily found at lower gas densities and lower extinctions than CO, we might reasonably expect [C I] emission to be a better tracer of  $A_V$  at low extinctions than CO. To test this, we plot in Fig. 11 the 2D PDF of the integrated intensity of the [C I]  $1 \rightarrow 0$  line. We see that there is a good linear correlation between  $W_{\text{C I},1-0}$  and  $A_V$  for visual extinctions in the range  $1.5 < A_V < 7$ . At higher extinctions, the correlation becomes sublinear, possibly because an increasing fraction of this high extinction gas consists of CO rather than C, while at  $A_V < 1.5$ , the correlation breaks down owing to the photoionization of C. Comparing our results for C and  $^{13}\text{CO}$ , we see that neutral atomic carbon is a better tracer of low column density material, while  $^{13}\text{CO}$  is to be preferred at high column densities. We also note that although the difference between  $A_V = 1.5$  and 3 may seem minor, it actually corresponds to approximately 20 per cent of the total mass of the cloud, consistent with our results in Section 3.2.

We have also examined how well the [C I]  $2 \rightarrow 1$  line traces the total column density (Fig. 12). As with the lower energy transition, we see that there is a good linear correlation between the integrated intensity of the line and the visual extinction over a wide range of  $A_V$ . At low  $A_V$ , the correlation breaks down at  $A_V \sim 2$ , a slightly higher value than for the  $1 \rightarrow 0$  line, but at high  $A_V$  the  $2 \rightarrow 1$  line performs better than the  $1 \rightarrow 0$  line, with the correlation between



**Figure 11.** As Fig. 9, but for the [C I]  $1 \rightarrow 0$  line.



**Figure 12.** As Fig. 9, but for the [C I]  $2 \rightarrow 1$  line. Note the change in the range of values displayed on the y-axis.

$W_{\text{C I},2-1}$  and  $A_V$  remaining approximately linear up to the highest extinctions probed in our study.

However, it is important to note that even at the highest  $A_V$  examined here, the  $2 \rightarrow 1$  line has a much lower integrated intensity than the  $1 \rightarrow 0$  line. This fact, plus the greater atmospheric opacity at the frequency of the  $2 \rightarrow 1$  line compared to the  $1 \rightarrow 0$  line means that in practice, the small improvement that one gets by observing the  $2 \rightarrow 1$  line is unlikely to justify the additional observing time required to map it to the same level of sensitivity. Whether this is true for all GMCs or merely those with properties similar to those of the cloud modelled here is an interesting question, but is beyond the scope of the present study.

In the regime where  $W_{\text{C I},1-0}$  scales linearly with  $A_V$ , the relationship between the two can be described by the following empirical fit

$$W_{\text{C I},1-0} = 0.75 A_V \text{ K km s}^{-1}. \quad (14)$$

If we apply this fit to each pixel in our synthetic [C I] emission map, we can generate an estimate of  $A_V$  and from that can estimate the cloud mass. The estimate that we obtain in this way is approximately 80 per cent of the true mass of the cloud; the ‘missing’ 20 per cent is the low  $A_V$  material that is not traced well by [C I].

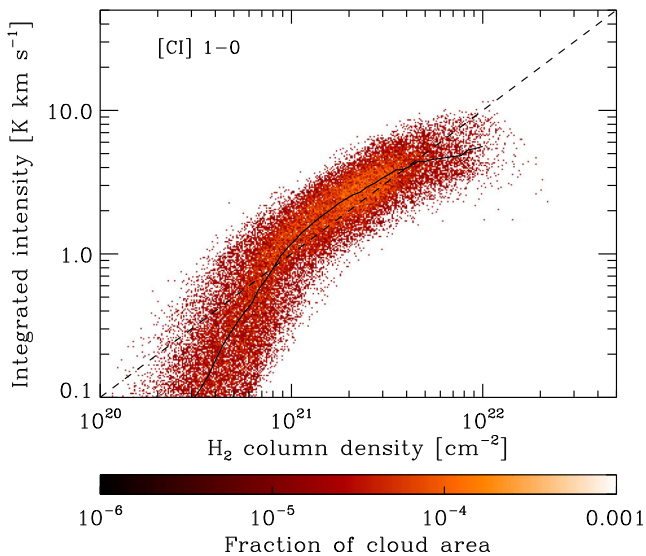
Finally, we note that our finding here that [C I] emission is a relatively good tracer of the column density over a significant range of  $A_V$  was already anticipated to some extent observationally. For example, in their study of NGC 891, Gerin & Phillips (2000) found a good spatial correlation between [C I]  $1 \rightarrow 0$  emission and 1.3 mm dust continuum emission, which they interpreted as evidence that [C I] emission is a good tracer of the gas column density.

### 3.4.2 Tracing the $H_2$ column density

In the previous section, we saw that one of the main drawbacks with using [C I] to trace the structure of the cloud is that it becomes very faint along low  $A_V$  lines of sight, and hence misses material at the edges of the cloud. However, this low density, low extinction gas will largely be composed of  $H_1$ , rather than  $H_2$ , and so it is worthwhile to examine whether there is a better correlation between the [C I] integrated intensity and the  $H_2$  column density than there is between the [C I] integrated intensity and the total column density.

In Fig. 13, we show a 2D PDF of  $W_{C_{1,1-0}}$  as a function of the  $H_2$  column density,  $N_{H_2}$ . The behaviour we see in this plot is qualitatively similar to the behaviour of the  $W_{C_{1,1-0}}-A_V$  relationship. [C I] emission traces  $H_2$  well at intermediate  $H_2$  column densities,  $5 \times 10^{20} < N_{H_2} < 10^{22} \text{ cm}^{-2}$ , but underestimates the molecular gas column density at high column densities, owing to the optical depth of the [C I] line. The correlation between [C I] emission and  $H_2$  column density also breaks down at low column densities, but it is clear from comparing Figs 11 and 13 that [C I] is a better tracer of the  $H_2$  column density than of the total column density in this regime.

The results discussed here agree well with those from the recent study of Offner et al. (2014), which also examined how well [C I]



**Figure 13.** 2D PDF of the integrated intensity in the [C I]  $1 \rightarrow 0$  line, plotted as a function of the  $H_2$  column density,  $N_{H_2}$ . The dashed line indicates a linear relationship between  $W_{C_{1,1-0}}$  and  $N_{H_2}$  and is there to guide the eye. The solid line shows the geometric mean of  $W_{C_{1,1-0}}$  as a function of  $N_{H_2}$ . The points are colour-coded according to the fraction of the total cloud area that they represent.

emission traces  $H_2$  column density in turbulent clouds. Offner et al. (2014) studied how a quantity they term  $X_{C_1}$ , namely

$$X_{C_1} = \frac{N_{H_2}}{W_{C_{1,1-0}}}, \quad (15)$$

varies as a function of  $N_{H_2}$  within their simulated clouds. They found that for  $H_2$  column densities between a few times  $10^{20}$  and  $10^{22} \text{ cm}^{-2}$ , the value of  $X_{C_1}$  has little dependence on the  $H_2$  column density, implying that in this regime,  $W_{C_{1,1-0}} \propto N_{H_2}$ , consistent with the results that we present here.

Offner et al. (2014) also computed the mean value of  $X_{C_1}$  for each of their simulations. For their run with  $G_0 = 1.0$ , which is probably the closest analogue to our simulated cloud, they obtained a value  $X_{C_1} = 1.1 \times 10^{21} \text{ cm}^{-2} \text{ K}^{-1} \text{ km}^{-1} \text{ s}$ . For comparison, we find a value  $X_{C_1} = 1.01 \times 10^{21} \text{ cm}^{-2} \text{ K}^{-1} \text{ km}^{-1} \text{ s}$ , within 10 per cent of their result.

### 3.4.3 Measuring the column density of C

In Section 3.4.1, we saw that [C I] emission is a good tracer of the total column density of the cloud over a wide range of visual extinctions. However, the relationship we derived between  $W_{C_{1,1-0}}$  and  $A_V$  (equation 14) was completely empirical, and hence we cannot be confident that the same relationship will hold for other molecular clouds, whether simulated or real. Ideally, what we would like to be able to do is to infer the column density of neutral atomic carbon,  $N_C$ , from our observations and then to infer  $A_V$  from  $N_C$ . However, this is not straightforward, as we demonstrate below.

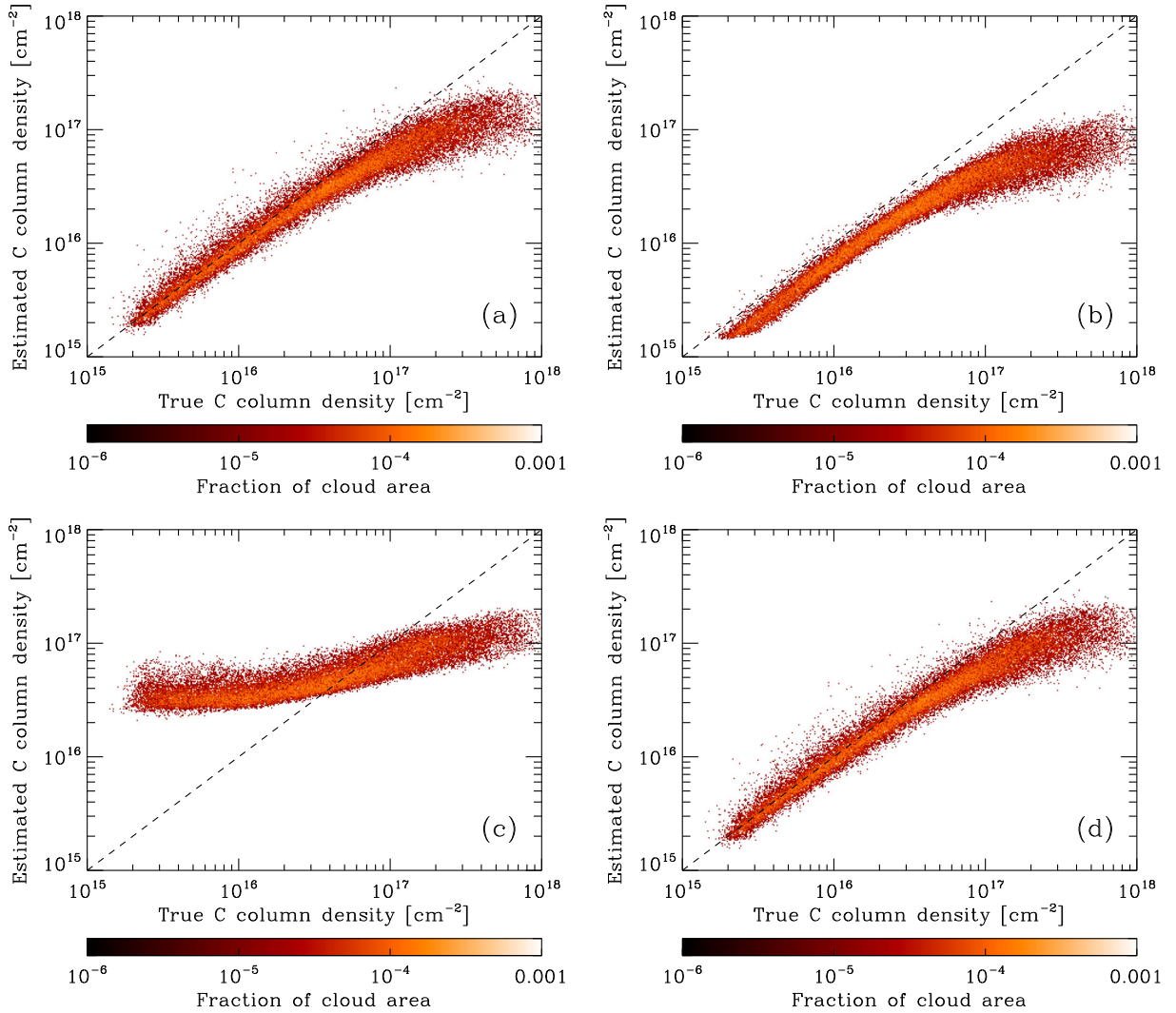
To begin with, we face the issue of how to infer  $N_C$  given the intensities of the two [C I] transitions. One approach is to assume that both lines are optically thin. In this case, the column densities of neutral atomic carbon atoms in the two excited levels follow directly from the integrated intensities of the  $1 \rightarrow 0$  and  $2 \rightarrow 1$  transitions. To determine the column density of carbon in the  $J = 0$  level, we need one additional piece of information: the excitation temperature of the  $J = 1$  level. Given this, the fact that, by definition,

$$\frac{N_1}{N_0} = \frac{g_1}{g_0} \exp\left(-\frac{E_{10}}{kT_{\text{ex}}}\right) \quad (16)$$

allows us to solve for  $N_0$  given  $N_1$  and  $T_{\text{ex}}$ . The total column density of carbon then follows trivially if we sum the column densities of all three levels.

Although we have seen already that the [C I]  $1 \rightarrow 0$  line does not remain optically thin over the entire range of column densities probed in our model cloud, it is nevertheless interesting to examine how well we can recover  $N_C$  in the case where we ignore any optical depth effects, and how large an error we make in the total neutral atomic carbon abundance we derive for the cloud when using this simplified approach.

In Fig. 14(a), we show a 2D PDF of the estimate of  $N_C$  that we derive if we assume optically thin [C I] emission ( $N_{C, \text{est}}$ ) versus the true value of  $N_C$  measured from the simulation. As before, we show values only for those lines of sight with  $W_{C_{1,1-0}} > 0.1 \text{ K km s}^{-1}$ . To compute our column density estimate, we need to know the mean excitation temperature along each line of sight. For this first estimate, we set  $T_{\text{ex}} = T_{\text{ex, mean}}$ , the weighted mean excitation temperature given by equation (12) for each line of sight. We see from the figure that for atomic carbon column densities of less than a few times  $10^{16} \text{ cm}^{-2}$ , there is very good agreement between  $N_{C, \text{est}}$  and  $N_C$ . At higher column densities, however,  $N_{C, \text{est}}$  falls below  $N_C$ ; i.e. it becomes an underestimate. This is easy to understand as a consequence of the growing optical depth of the [C I] lines with



**Figure 14.** (a) 2D PDF showing the estimated column density of neutral atomic carbon as a function of the true column density. The estimated column density was computed using the procedure described in Section 3.4.3, with the excitation temperature for each line of sight taken to be a weighted mean of the actual excitation temperature. At carbon column densities greater than a few times  $10^{16} \text{ cm}^{-2}$ , we underestimate  $N_C$  because we do not account for the effects of line opacity. As in Figs 9–11, the colour-coding corresponds to the fraction of the total area of the cloud represented by each point. (b) As panel (a), but using the estimate of  $T_{\text{ex}}$  given by equation (9). We see that because equation (9) overestimates the excitation temperature associated with the  $1 \rightarrow 0$  transition, our derived values of  $N_C$  systematically underestimate the true values. (c) As panel (a), but using the estimate of  $T_{\text{ex}}$  given by equation (10). This estimate performs very badly: at low column densities, we underestimate  $T_{\text{ex}}$  and hence overestimate  $N_C$ , while at high column densities, our values for  $T_{\text{ex}}$  are much more accurate but the neglect of optical depth effects means that we now underestimate  $N_C$ . (d) As panel (a), but using the estimate of  $T_{\text{ex}}$  given by equation (10) for lines of sight with  $W_{\text{C}1,1-0} > 3 \text{ K km s}^{-1}$  and adopting a constant value for the fainter lines of sight that is equal to the mean of the values determined for the bright sightlines.

increasing  $N_C$ , an effect which is not accounted for in our simple estimate.

In practice,  $T_{\text{ex, mean}}$  is not an observable quantity. Therefore, in the other panels of Fig. 14 we explore what happens if we use the different estimates of  $T_{\text{ex}}$  that we derived in Section 3.3 to compute our estimate of  $N_C$ . In Fig. 14(b), we show the result that we obtain when we set  $T_{\text{ex}} = T_{\text{ex, est}}$ , the excitation temperature estimate given by equation (9). We see that although there is still a good correlation between  $N_C$  and  $N_{\text{C, est}}$  at low column densities, our column density estimate is systematically offset from the true value by a factor of approximately 0.7. This behaviour is consistent with our earlier finding that  $T_{\text{ex, est}}$  is an overestimate of the true excitation temperature, as this means that our derived value for  $N_0$  is too small.

In Fig. 14(c), we show what happens if we use  $T_{\text{ex, est, 2}}$ , the estimate of  $T_{\text{ex}}$  that we obtained from the optically thick analysis. We see that in this case, there is very poor agreement between  $N_{\text{C, est}}$  and  $N_C$ . This is not unexpected, as in this approach we assume mutually contradictory things for the [C I] emission. Our derivation of the excitation temperature assumes that [C I] is optically thick, but our expression for  $N_C$  assumes that the emission is optically thin. Along sightlines where the emission is actually optically thin, we derive excitation temperatures that are too small and hence predict values for the column density of carbon atoms in the  $J = 0$  level that are much higher than the true value, leading to values of  $N_{\text{C, est}}$  that are also far too large. On the other hand, along sightlines where the emission is actually optically thick, our estimated values of  $T_{\text{ex}}$  are far more reasonable, but our expression for  $N_C$  is no longer accurate,

because it does not account for the effects of line opacity. In this regime, we therefore underestimate  $N_C$ .

Finally, in Fig. 14(d), we show the results we obtain if we compute  $T_{\text{ex}}$  for lines of sight with  $W_{\text{C},1-0} > 3 \text{ K km s}^{-1}$  using equation (10), and adopt a constant value for the fainter lines of sight that is equal to the mean of the values determined for the  $W_{\text{C},1-0} > 3 \text{ K km s}^{-1}$  sightlines. We see that this strategy performs well at low  $N_C$ : estimates for  $N_C$  along individual sightlines can differ from the true values by as much as 50 percent, but there is no systematic bias towards low or high values. At high  $N_C$ , optical depth effects once again cause this method to break down.

A number of studies in the literature (e.g. Ikeda et al. 2002; Schneider et al. 2003) attempt to correct for the effects of [C I] line opacity by including a factor

$$f_{\text{corr},J \rightarrow J-1} = \frac{\tau_{\text{C},J \rightarrow J-1}}{1 - e^{-\tau_{\text{C},J \rightarrow J-1}}}, \quad (17)$$

in their conversion from integrated intensity to column density, where  $\tau_{\text{C},J \rightarrow J-1}$  is the optical depth of the transition from level  $J$  to level  $J-1$ . For the column density of the  $J=1$  level, one then has

$$N_1 = \frac{8\pi k \nu_{10}^2}{hc^3 A_{10}} f_{\text{corr},1 \rightarrow 0} \int T_{\text{B},1-0} dv, \quad (18)$$

where  $T_{\text{B},1-0}$  is the brightness temperature of the  $1 \rightarrow 0$  line. A similar expression can also be written down for the column density of the  $J=2$  level. To compute this correction, it is necessary to estimate the optical depth in the relevant transition. In the case of the  $1 \rightarrow 0$  transition, this is typically done using the expression

$$\tau_{\text{C}} = -\log \left( 1 - k T_{\text{B},1-0,\text{max}} \frac{\exp(E_{10}/kT_{\text{ex}}) - 1}{E_{10}} \right), \quad (19)$$

where  $T_{\text{B},1-0,\text{max}}$  is the maximum value of  $T_{\text{B},1-0}$  observed along the line of sight. However, the derivation of equation (19) follows from the relationship between  $T_{\text{B},1-0}$  and  $T_{\text{ex}}$  that we previously encountered in Section 3.3:

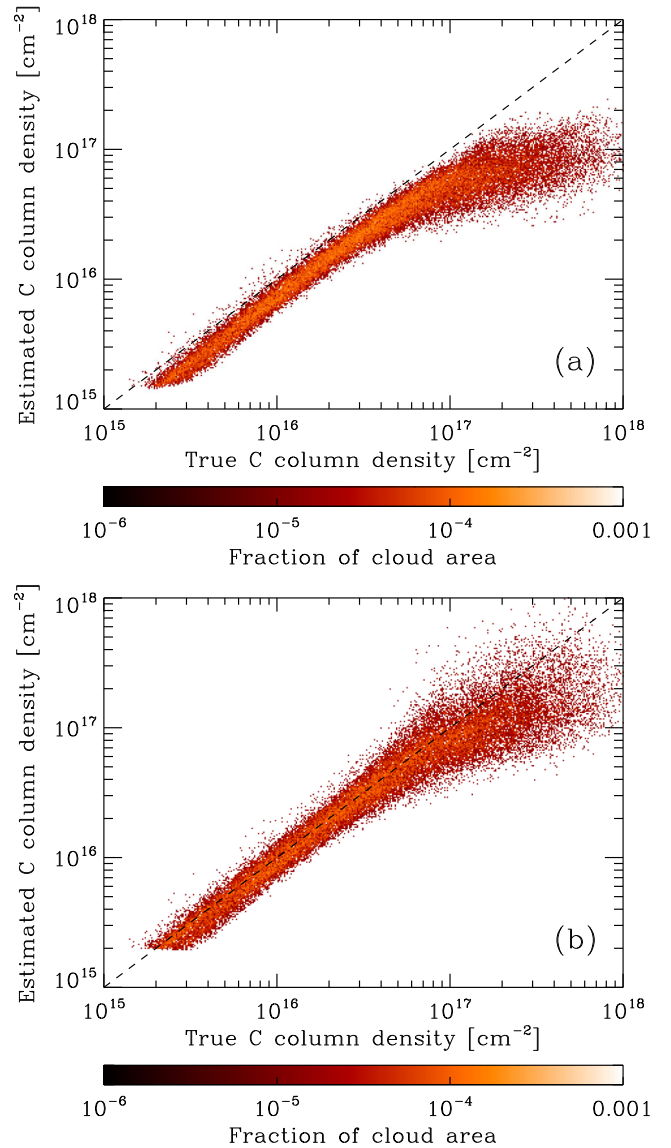
$$\frac{k T_{\text{B},1-0,\text{max}}}{E_{10}} = \left[ \frac{1}{e^{E_{10}/kT_{\text{ex}}} - 1} - \frac{1}{e^{E_{10}/kT_{\text{bg}}} - 1} \right] \times (1 - e^{-\tau}). \quad (20)$$

The procedure that gives us our best estimate of  $T_{\text{ex}}$  in the optically thin limit is based on taking the  $\tau \rightarrow \infty$  limit of this expression, and hence does not allow us to compute a meaningful opacity correction.

If we instead use  $T_{\text{ex,est}}$  as our estimate of the excitation temperature, then we can compute physically plausible values of  $\tau$  using equation (19). However, the resulting correction does not significantly improve the agreement between the real and estimated column densities in the optically thick regime, as can be seen by comparing Figs 14(b) and 15(a). In view of this, we have also examined the performance of an alternative strategy that is often used to derive  $T_{\text{ex}}$  and  $\tau$  for [C I]. This makes use of the  $^{12}\text{CO } J=1 \rightarrow 0$  emission map (assuming one is available). The  $^{12}\text{CO}$  emission is assumed to be optically thick, and the following expression is used to compute the excitation temperature of the CO molecules (Dickman 1978)

$$T_{\text{ex,CO}} = \frac{5.5}{\ln \left[ 1 + 5.5 / (T_{\text{B},1-0,\text{max}} + 0.82) \right]}. \quad (21)$$

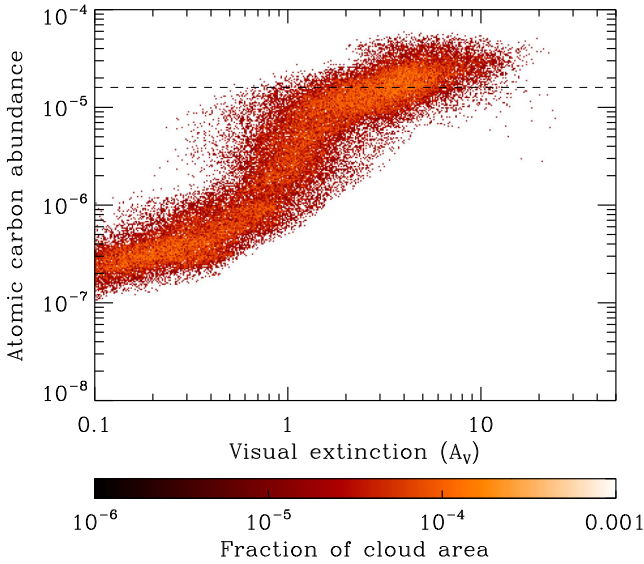
This is directly analogous to equation (10), but uses parameters appropriate for the  $^{12}\text{CO } J=1 \rightarrow 0$  line rather than the [C I]  $1 \rightarrow 0$  line. The excitation temperature of the carbon atoms is then simply taken to be the same as this value. One potential issue with



**Figure 15.** (a) 2D PDF showing the estimated column density of neutral atomic carbon as a function of the true column density, computed using the estimate of  $T_{\text{ex}}$  given by equation (9) and corrected for opacity using equations (17) and (19). As in the previous figures, the colour-coding corresponds to the fraction of the total area of the cloud represented by each point. (b) As (a), but using an estimate of  $T_{\text{ex}}$  derived from the  $^{12}\text{CO}$  peak brightness temperature, as described in more detail in the text.

this approach is that the extent of the detectable CO emission is not necessarily the same as that of the detectable [C I] emission. We avoid this problem by once again computing sightline-specific values of  $T_{\text{ex}}$  only for those sightlines with  $W_{\text{C},1-0} > 3 \text{ K km s}^{-1}$ , since this subset of sightlines all have significant  $^{12}\text{CO}$  emission associated with them. For the remaining sightlines, we adopt a constant value of  $T_{\text{ex}}$  equal to the mean of the values determined for the bright sightlines.

The results that we obtain with this approach are plotted in Fig. 15. We see that the column density estimates yielded by this technique agree well with the true values for column densities up to  $N_C \sim 7 \times 10^{16} \text{ cm}^{-2}$ . At higher column densities, this technique does not completely correct for the effects of the opacity, and so we still underestimate the true column density along most sightlines



**Figure 16.** 2D PDF showing the line-of-sight averaged fractional abundance of neutral atomic carbon as a function of the visual extinction. The colour-coding corresponds to the fraction of the total area of the cloud represented by each point. The horizontal dashed line indicates the mean fractional abundance in the cloud as a whole.

in this regime. Nevertheless, even here we see significant improvement in comparison to the uncorrected case, albeit at the cost of substantially increased scatter.

We have also examined how much of the atomic carbon in the cloud we fail to detect owing to the line opacity, and how good our various approximations are at recovering this missing material. The total atomic carbon content that we infer if we use the actual column-averaged excitation temperatures but do not correct for opacity is approximately 47 per cent of the true value, i.e. we miss around half of the atomic carbon. Using excitation temperatures derived from the [C I] line ratio and correcting for opacity actually makes the situation worse: the small improvement at high  $N_C$  is swamped by the effects of the systematic underestimate at low  $N_C$ , and we recover only 37 per cent of the total atomic carbon. Finally, using values for  $T_{\text{ex}}$  estimated from the  $^{12}\text{CO}$  emission does improve matters, but even in this case we recover only 65 per cent of the total atomic carbon. An important conclusion that we can draw from this result is that estimates in the literature of the atomic carbon content of real molecular clouds that are based on observations of the [C I] emission will typically be too small, possibly by as much as a factor of 2.

Given an estimate of  $N_C$ , a further problem that we face is how to convert from this to the total column density. Along a given line of sight,  $N_C$  and  $N_{\text{H, tot}}$ , the total hydrogen column density, are related by  $N_{\text{H, tot}} = N_C \bar{x}_{\text{C, los}}^{-1}$ , where  $\bar{x}_{\text{C, los}}$  is the fractional abundance of atomic carbon weighted by mass and averaged along the line of sight. The mass-weighted average for the cloud as a whole is given by  $\bar{x}_{\text{C}} = 1.60 \times 10^{-5}$ , but as we have already seen, the local abundance is not constant, but instead varies as a function of density and position in the cloud.

In Fig. 16, we show how  $\bar{x}_{\text{C, los}}$  varies as a function of the visual extinction. We see that there is a systematic increase in the mean abundance as we move to higher extinctions. This is particularly pronounced around  $A_V \sim 1$ , where we first start to probe regions that are well shielded from the ISRF, but even at much higher  $A_V$  we still see an increase. Using the mean value for the whole cloud as a

proxy for  $\bar{x}_{\text{C, los}}$  is a reasonable approximation only for visual extinctions  $\sim$  a few, but would lead one to significantly underestimate the total column density along diffuse lines of sight and overestimate it along dense sightlines. Moreover,  $\bar{x}_{\text{C}}$  is not an observable quantity (unless the total column density of the cloud is already known), but must instead be estimated using a chemical model of the cloud, such as that included in our hydrodynamical simulation. This introduces yet more uncertainty into the final column density estimate, and leading us to conclude that this technique for estimating  $N_{\text{H, tot}}$  is likely in practice to be much less accurate than simply using the correlation between  $W_{\text{C I, 1-0}}$  and  $A_V$  discussed in the previous section.

### 3.5 Comparison of [C I] and $^{13}\text{CO}$ emission

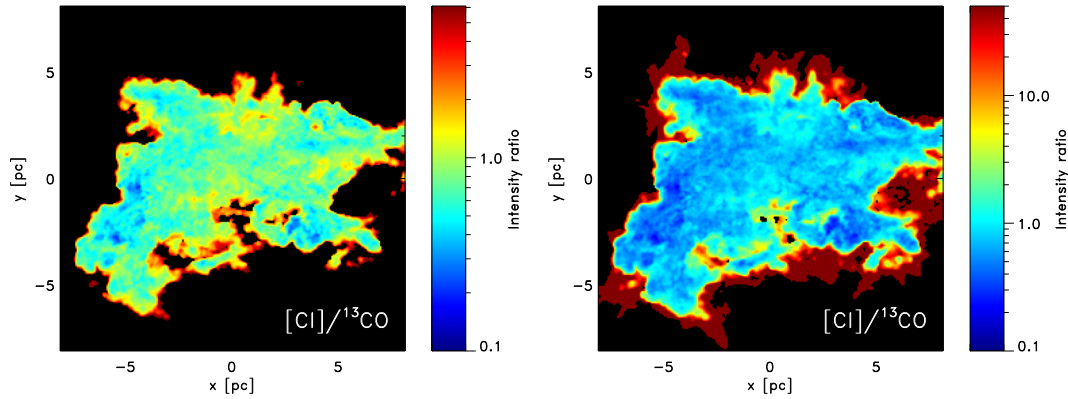
We have seen in the previous subsections that there are some interesting similarities between [C I]  $1 \rightarrow 0$  emission and  $^{13}\text{CO} J = 1 \rightarrow 0$  emission. Both tracers are optically thin for a broad range of visual extinctions, and both trace a very similar fraction of the cloud mass when we restrict our attention to regions where the integrated intensity exceeds a few  $\text{K km s}^{-1}$ . It is therefore worthwhile to directly compare these two tracers in more detail, so that we can better understand their strengths and weaknesses.

In Fig. 17, we examine how the integrated intensity ratio  $R \equiv W_{\text{C I, 1-0}}/W_{^{13}\text{CO}}$  varies over the cloud. In the left-hand panel, we compute this ratio only for lines of sight for which both  $W_{\text{C I, 1-0}}$  and  $W_{^{13}\text{CO}}$  exceed  $0.1 \text{ K km s}^{-1}$ . We see that within this region,  $R$  is surprisingly uniform with a value close to 1. This behaviour is in good agreement with observations of the [C I]-to- $^{13}\text{CO}$  intensity ratio in real clouds (see e.g. Ikeda et al. 2002) that often show almost uniform ratios. It is also clear that  $R$  starts to increase towards the edge of the cloud, but the restriction of the image to regions with  $^{13}\text{CO}$  emission above our  $0.1 \text{ K km s}^{-1}$  threshold acts to obscure how large  $R$  can grow as we move towards the edge of the cloud. Therefore, in the right-hand panel of Fig. 17, we show how  $R$  behaves when we remove this restriction. The colour scale is chosen to emphasize the change in  $R$  at the edge of the cloud, although for practical reasons we limit the maximum displayed value to  $R = 50$ . Comparing the two maps allows one to see very clearly the envelope of gas around the CO-bright portion of the cloud that is well traced by [C I] but not by  $^{13}\text{CO}$ .

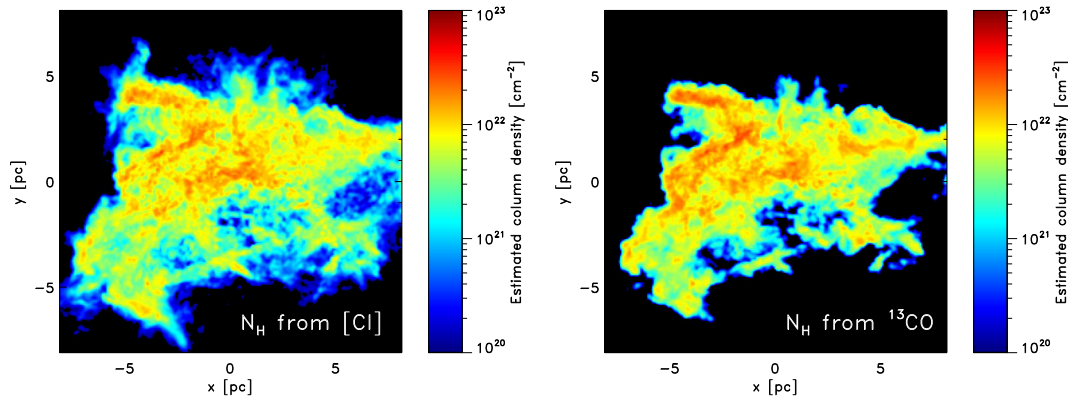
It is also interesting to explore how well we can reconstruct the column density distribution of the cloud using these two tracers. In Fig. 18(a), we show a column density map of the cloud that we have constructed using the empirical relationship between  $W_{\text{C I, 1-0}}$  and  $A_V$  given in equation (14), which we have already seen gives a good description of the relationship between [C I] emission and dust extinction for lines of sight with  $A_V > 1.5$ . In Fig. 18(b), we show a similar map, constructed using the empirical relationship

$$W_{^{13}\text{CO}} = 1.0 A_V \text{ K km s}^{-1}, \quad (22)$$

which gives a similarly good description of the behaviour of the  $^{13}\text{CO}$  integrated intensity for lines of sight with  $A_V > 3$ . We have chosen to perform this comparison using these empirical fits, rather than making use of the more common strategy of first inferring the C (or  $^{13}\text{CO}$ ) column density from the observed emission, and then inferring the total column density from the column density of our tracer, because the latter technique inevitably introduces additional sources of error, as we have already explored in some detail. The comparison in Fig. 18 is therefore in some sense a ‘best case’ scenario – we are unlikely to actually be able to reconstruct the column densities as well in practice.



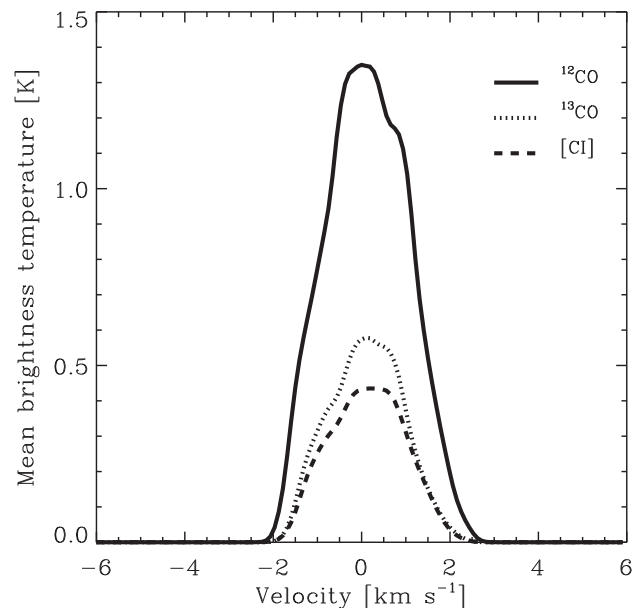
**Figure 17.** Ratio of the integrated intensities of the [C I]  $1 \rightarrow 0$  transition and the  $^{13}\text{CO } J = 1 \rightarrow 0$  transition. In the left-hand panel, we show the values only for those lines of sight with  $W_{13\text{CO}} \geq 0.1 \text{ K km s}^{-1}$ , which serves to emphasize the near uniformity of the intensity ratio within the CO-bright region. In the right-hand panel, we show how the intensity ratio behaves when we remove this restriction. In this case, we have chosen a different colour scale that allows us to highlight the region at the edges of the cloud where there is still bright [C I] emission but no significant  $^{13}\text{CO}$  emission, resulting in a large value for the intensity ratio. Note that for practical reasons, we limit the maximum displayed value of the ratio to 50.



**Figure 18.** Left: reconstruction of the column density distribution, based on the empirical relationship between  $W_{\text{C I},1-0}$  and  $A_V$  quantified by equation (14). Right: as in the left-hand panel, but this time using the empirical relationship between  $W_{13\text{CO}}$  and  $A_V$  given by equation (22).

Comparing these two reconstructed maps with the true column density map shown in Fig. 5(a), we see that, as expected, [C I] allows us to better reconstruct the column density distribution towards the edges of the cloud, although we still miss some of the lowest column density material. On the other hand,  $^{13}\text{CO}$  seems to do better at tracing the highest density peaks, some of which are hard to pick out from the background when using [C I].

Finally, we have also examined how well [C I] and  $^{13}\text{CO}$  trace the cloud velocity. We have computed cloud-averaged spectra for the [C I]  $1 \rightarrow 0$  line and for the  $^{13}\text{CO } J = 1 \rightarrow 0$  line, and have plotted these in Fig. 19, along with a cloud-averaged spectrum for the  $^{12}\text{CO } J = 1 \rightarrow 0$  transition. We see that the line width and strength of the [C I] and  $^{13}\text{CO}$  are remarkably similar. This is unsurprising, since in both cases, the cloud-averaged spectra are dominated by the bright emission coming from the high-density regions of the cloud, and hence are largely tracing the same material. The fact that the [C I] emission does a better job of tracing the boundaries of the cloud does not greatly affect the average line width, as little of the total [C I] emission is generated in these regions. Finally, the much higher optical depth of the  $^{12}\text{CO}$  emission means that a larger fraction of the cloud contributes to the cloud-averaged spectrum, resulting in a much brighter line with a greater line width.



**Figure 19.** Comparison of the mean brightness temperatures of  $^{12}\text{CO } J = 1 \rightarrow 0$  (solid line),  $^{13}\text{CO } J = 1 \rightarrow 0$  (dotted line) and the [C I]  $1 \rightarrow 0$  transition (dashed line), averaged over the entire synthetic image.



## 4 CONCLUSIONS

In this paper, we have examined in detail the distribution of neutral atomic carbon within a model of a turbulent molecular cloud illuminated by the standard local ISRF, and have also studied the [C I] fine structure emission produced by these carbon atoms. We show that the density substructure created by the turbulence naturally leads to widespread, spatially extended [C I] emission, in good agreement with observations of real molecular clouds.

Most of the neutral carbon in our model is located in gas with a density in the range  $100 < n < 10^4 \text{ cm}^{-3}$ , and with an effective (angle-averaged) visual extinction  $A_{V, \text{eff}} > 1$ . This gas is relatively cold – around 80 per cent of the neutral carbon is found in regions with  $T < 30 \text{ K}$  – and so [C I], like CO, is primarily a tracer of the cold, dense phase within molecular clouds, and not the warm, space-filling phase traced by [C II].

Our results suggest that [C I]  $1 \rightarrow 0$  emission is a promising tracer of low column density gas in molecular clouds. Although it is easier to detect the molecular gas using  $^{12}\text{CO}$  emission than using [C I] emission, the relationship between  $^{12}\text{CO}$  integrated intensity and the column density of the gas is highly non-linear, owing to the effects of CO photodissociation at low  $A_V$  and line opacity at high  $A_V$ . One can avoid the worst of the opacity effects by using  $^{13}\text{CO}$  in place of  $^{12}\text{CO}$ , but the effects of photodissociation are not so easily overcome. We find that  $^{13}\text{CO}$  emission is a roughly linear tracer of column density for line-of-sight visual extinctions in the range  $3 < A_V < 10$ , although we caution that the fact that we are neglecting CO freeze-out on to dust grains may affect our results at high  $A_V$ . In comparison, the integrated intensity of the [C I]  $1 \rightarrow 0$  line is a linear tracer of column density for visual extinctions in the range  $1.5 < A_V < 7$ . Observing [C I] in place of  $^{13}\text{CO}$  therefore allows one to better study the gas with visual extinctions  $1.5 < A_V < 3$ , which in practice accounts for around 20 per cent of the total mass of the cloud. However, at  $A_V > 3$ ,  $^{13}\text{CO}$  is as good a tracer of the cloud as [C I], while also being significantly easier to observe. Our results are consistent with previous work that has suggested that [C I] emission is a good tracer of molecular gas (see e.g. Gerin & Phillips 2000; Papadopoulos, Thi & Viti 2004), although whether this is still true for clouds in other environments (e.g. lower metallicities, higher radiation fields) remains to be seen.

We have studied several different ways of estimating the excitation temperature of [C I] based on the observed emission. We find that the best results are obtained if we use the Dickman (1978) method for computing  $T_{\text{ex}}$  along sightlines with integrated intensities  $W_{\text{C I}, 1 \rightarrow 0} > 3 \text{ K km s}^{-1}$  and adopt a constant value of  $T_{\text{ex}}$  for the fainter sightlines, derived by averaging the estimated values for the bright sightlines. The resulting excitation temperatures are typically  $T_{\text{ex}} \sim 11\text{--}13 \text{ K}$ , and are generally smaller than the kinetic temperature of the emitting gas, indicating that most of the carbon atoms are not in LTE.

Using our estimate for  $T_{\text{ex}}$ , we can determine the column density of neutral atomic carbon,  $N_{\text{C}}$ , with reasonable accuracy in the regime where  $N_{\text{C}}$  is less than a few times  $10^{16} \text{ cm}^{-2}$ . Comparison of the true and estimated column densities shows that although the error along any particular line of sight may be as high as a factor of 2, there is no systematic offset between the estimated and real values. At higher carbon column densities, however, our estimate becomes inaccurate because it neglects the effects of line opacity, and we start to significantly underestimate the true value of  $N_{\text{C}}$ . We find that in practice, we typically miss about half of the total atomic carbon when using this procedure. We have also explored whether using the  $^{12}\text{CO}$  excitation temperature as a proxy for the [C I] excitation

temperature can allow us to better reconstruct  $N_{\text{C}}$  in the optically thick regime. We find that it does allow us to partially correct for the effects of opacity, although we still miss as much as a third of the total atomic carbon. We therefore recommend that if one wants to estimate  $N_{\text{C}}$  based on observations of the [C I] fine structure lines, then the following procedure should be adopted.

- (i) Determine the excitation temperature of the  $1 \rightarrow 0$  line of  $^{12}\text{CO}$  using equation (21).
- (ii) Using this excitation temperature as a proxy for that of [C I], estimate the optical depth in the [C I]  $1 \rightarrow 0$  transition using equation (19).
- (iii) Compute the column density of atomic carbon in the  $J = 1$  level,  $N_1$ , using equations (17) and (18).
- (iv) Repeat steps 2 and 3 for the  $J = 2$  level, using the integrated intensity of the  $2 \rightarrow 1$  transition in place of that of the  $1 \rightarrow 0$  transition, and using  $E_{21}$ ,  $\nu_{21}$  and  $A_{21}$  in place of  $E_{10}$ ,  $\nu_{10}$  and  $A_{10}$ .
- (v) Use the excitation temperature estimate together with equation (16) to compute the column density of carbon in the  $J = 0$  level.
- (vi) Sum the column densities of the three levels to obtain the final estimate for  $N_{\text{C}}$ .

If, as is often the case, the atomic carbon column density is estimated without correcting for opacity effects and with the assumption that the levels have LTE populations, then our study suggests that the resulting values could be in error by as much as a factor of 2.

A major limitation of our present study is the fact that we have restricted our attention to a single example of a turbulent cloud. In future work, we plan to examine a wider sample of clouds, and to explore whether [C I] emission remains a good tracer of the  $\text{H}_2$  column density as we reduce the metallicity of the cloud and/or increase the strength of the ambient ISRF. It will also be interesting to explore how the ability of [C I] emission to trace  $\text{H}_2$  changes over time as the cloud evolves, as we have seen in previous studies that the CO emission from clouds that are in the process of forming can change quickly on a relatively short time-scale.

## ACKNOWLEDGEMENTS

The authors would like to thank H. Beuther, F. Bigiel, T. Bisbas, D. Cormier, I. De Looze, S. Madden, S. Malhotra, R. Plume and K. Sandstrom for useful conversations on the topic of this work. They would also like to thank S. Ragan for helpful comments on an earlier draft of this manuscript. Special thanks also go to V. Ossenkopf for stressing to us the potential importance of neutral atomic carbon as a cloud tracer, to J. Carpenter for suggesting that we produce a figure along the lines of what is now Fig. 6, and to the referee, P. Goldsmith, whose detailed and thoughtful referee report allowed us to greatly improve the paper. SCOG, FM and PCC acknowledge support from the DFG via SFB project 881 ‘The Milky Way System’ (subprojects B1, B2, B3, B5 and B8). FM and MM also acknowledge financial support by the International Max Planck Research School for Astronomy and Cosmic Physics at the University of Heidelberg (IMPRS-HD) and the Heidelberg Graduate School of Fundamental Physics (HGSFP). The HGSFP is funded by the Excellence Initiative of the German Research Foundation DFG GSC 129/1. PCC further acknowledges support from the DFG priority programme SPP 1573 ‘Physics of the ISM’ (grant CL 463/2-1). MM also acknowledges support from the Ministry of Education, Science and Technological Development of the Republic of Serbia through the project no. 176021, ‘Visible and Invisible

Matter in Nearby Galaxies: Theory and Observations' and support provided by the European Commission through FP7 project BELIS-SIMA (BELgrade Initiative for Space Science, Instrumentation and Modelling in Astrophysics, call FP7-REGPOT-2010-5, contract no. 256772). The simulations described in this paper were performed on the *kolob* cluster at the University of Heidelberg, which is funded in part by the DFG via Emmy-Noether grant BA 3706, and via a Frontier grant of Heidelberg University, sponsored by the German Excellence Initiative as well as the Baden-Württemberg Foundation.

## REFERENCES

- Benz W., 1990, in Buchler J. R., ed., Proc. the NATO Advanced Research Workshop, The Numerical Modelling of Nonlinear Stellar Pulsations Problems and Prospects. Kluwer, Dordrecht, p. 269
- Bergin E. A., Hartmann L. W., Raymond J. C., Ballesteros-Paredes J., 2004, *ApJ*, 612, 921
- Bethell T. J., Zweibel E. G., Heitsch F., Mathis J. S., 2004, *ApJ*, 610, 801
- Bethell T. J., Zweibel E. G., Li P. S., 2007, *ApJ*, 667, 275
- Clark P. C., Glover S. C. O., Klessen R. S., 2012a, *MNRAS*, 420, 745
- Clark P. C., Glover S. C. O., Klessen R. S., Bonnell I. A., 2012b, *MNRAS*, 424, 2599
- Clark P. C., Glover S. C. O., Ragan S. E., Shetty R., Klessen R. S., 2013, *ApJ*, 768, L34
- Dickman R. L., 1978, *ApJS*, 37, 407
- Draine B. T., 1978, *ApJS*, 36, 595
- Frerking M. A., Keene J., Blake G. A., Phillips T. G., 1989, *ApJ*, 344, 311
- Genzel R., Harris A. I., Stutzki J., Jaffe D. T., 1988, *ApJ*, 332, 1049
- Gerin M., Phillips T. G., 2000, *ApJ*, 537, 644
- Glover S. C. O., Clark P. C., 2012a, *MNRAS*, 421, 9
- Glover S. C. O., Clark P. C., 2012b, *MNRAS*, 421, 116
- Glover S. C. O., Clark P. C., 2012c, *MNRAS*, 426, 377
- Glover S. C. O., Mac Low M.-M., 2007a, *ApJS*, 169, 239
- Glover S. C. O., Mac Low M.-M., 2007b, *ApJ*, 659, 1317
- Glover S. C. O., Federrath C., Mac Low M.-M., Klessen R. S., 2010, *MNRAS*, 404, 2
- Goldsmith P. F., Heyer M., Narayanan G., Snell R., Li D., Brunt C., 2008, *ApJ*, 680, 428
- Goodman A. A., Pineda J. E., Schnee S. L., 2009, *ApJ*, 692, 91
- Górski K. M., Hivon E., Banday A. J., Wandelt B. D., Hansen F. K., Reinecke M., Bartelmann M., 2005, *ApJ*, 622, 759
- Gredel R., Lepp S., Dalgarno A., 1987, *ApJ*, 323, L137
- Ikeda M., Oka T., Tatematsu K., Sekimoto Y., Yamamoto S., 2002, *ApJS*, 139, 467
- Kramer C., Jakob H., Mookerjea B., Schneider N., Brüll M., Stutzki J., 2004, *A&A*, 424, 887
- Kramer C. et al., 2008, *A&A*, 477, 547
- Langer W., 1976, *ApJ*, 206, 699
- Larson R., 2005, *MNRAS*, 359, 211
- Lee H.-H., Herbst E., Pineau des Forêts G., Roueff E., Le Bourlot J., 1996, *A&A*, 311, 690
- Little L. T., Gibb A. G., Heaton B. D., Ellison B. N., Claude S. M. X., 1994, *MNRAS*, 271, 649
- Mathis J. S., Mezger P. G., Panagia N., 1983, *A&A*, 128, 212
- Nelson R. P., Langer W. D., 1999, *ApJ*, 524, 923
- Offner S. S. R., Bisbas T. G., Bell T. A., Viti S., 2014, *MNRAS*, 440, L81
- Papadopoulos P. P., Thi W.-F., Viti S., 2004, *MNRAS*, 351, 147
- Pineda J. E., Caselli P., Goodman A. A., 2008, *ApJ*, 679, 481
- Plume R., Jaffe D. T., Keene J., 1994, *ApJ*, 425, L49
- Röllig M., Ossenkopf V., 2013, *A&A*, 550, A56
- Schilke P., Keene J., Le Bourlot J., Pineau des Forêts G., Roueff E., 1995, *A&A*, 294, L17
- Schneider N., Simon R., Kramer C., Kraemer K., Stutzki J., Mookerjea B., 2003, *A&A*, 406, 915
- Schöier F. L., van der Tak F. F. S., van Dishoeck E. F., Black J. H., 2005, *A&A*, 432, 369
- Scoville N. Z., Solomon P. M., 1974, *ApJ*, 187, L67
- Sembach K. R., Howk J. C., Ryans R. S. I., Keenan F. P., 2000, *ApJ*, 528, 310
- Shetty R., Kauffmann J., Schnee S., Goodman A. A., Ercolano B., 2009, *ApJ*, 696, 2234
- Shetty R., Glover S. C., Dullemond C., Klessen R. S., 2011a, *MNRAS*, 412, 1686
- Shetty R., Glover S. C. O., Dullemond C. P., Ostriker E. C., Harris A. I., Klessen R. S., 2011b, *MNRAS*, 415, 3253
- Springel V., 2005, *MNRAS*, 364, 1105
- Stark R., van Dishoeck E. F., 1994, *ApJ*, 286, L43
- Stutzki J., Stacey G. J., Genzel R., Harris A. I., Jaffe D. T., Lugten J. B., 1988, *ApJ*, 332, 379
- Szűcs L., Glover S. C. O., Klessen R. S., 2014, *MNRAS*, 445, 4055
- van Dishoeck E. F., Black J. H., 1988, *ApJ*, 334, 771
- Visser R., van Dishoeck E. F., Black J. H., 2009, *A&A*, 503, 323
- Watson W. D., Anicich V. G., Huntress W. T., Jr, 1976, *ApJ*, 205, L165
- Wilson T. L., Rohlf K., Hüttemeister S., 2013, *Tools of Radio Astronomy*. Springer-Verlag, Berlin
- Woodall J., Agúndez M., Markwick-Kemper A. J., Millar T. J., 2007, *A&A*, 466, 1197

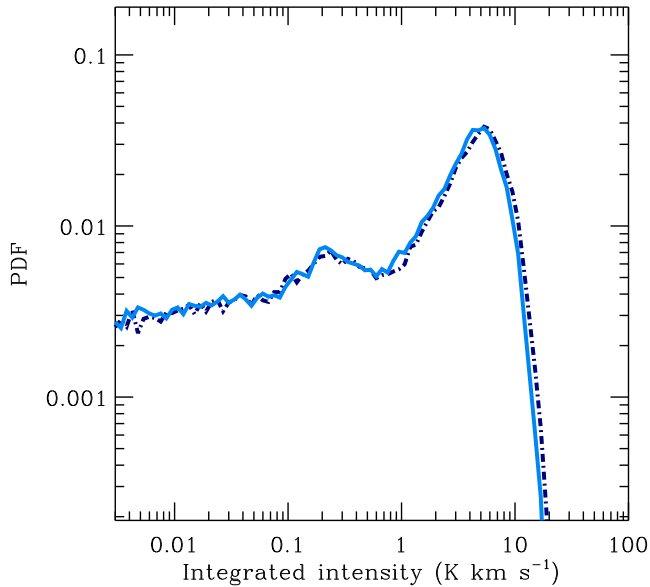
## APPENDIX A: RESOLUTION STUDY

Any numerical study of the physics of molecular clouds inevitably has to grapple with the issue of limited numerical resolution. Computational limitations prevent us from running our models at arbitrarily high resolution, and so it is important to establish whether this limitation significantly affects the conclusions that we draw from our model clouds. In the present study, there are three potential sources of resolution dependence: the numerical resolution of the hydrodynamical model itself, the size of the Cartesian grid used during our radiative transfer post-processing step, and the discretization of column densities in the column density maps generated by our `TREECOL` algorithm. We examine each of these in more detail below.

### A1 Hydrodynamical resolution

The simulation that we have studied in detail here was performed using two million SPH particles to simulate  $10^4 M_{\odot}$  of gas. This gives a particle mass of  $5 \times 10^{-3} M_{\odot}$ , which corresponds to a mass resolution of  $0.5 M_{\odot}$ , if we use the standard convention that any 'resolved' structure must consist of at least 100 SPH particles. We have previously shown that this resolution is sufficient to model the star formation rate within our turbulent cloud (Glover & Clark 2012a), but that the low-mass end of the stellar initial mass function is not properly resolved. This suggests that the resolution is sufficient to model the formation of pre-stellar cores, but not sufficient to properly follow the fragmentation that occurs within them. As most of the [C I] emission in our model comes from gas that is at lower densities than the density of a typical pre-stellar core, it is reasonable to assume that two million particles will give us sufficient resolution to accurately model this emission.

To verify this assumption, we have run a higher resolution simulation of the same cloud using 20 million SPH particles. The higher computational cost of this simulation makes it impractical to run it for as long as our lower resolution simulation, and so we have compared the results from the two simulations at a time  $t = 0.72$  Myr, corresponding to roughly 30 per cent of a free-fall time. Turbulence has already created significant density substructure by this point in the evolution of the cloud and substantial amounts of neutral atomic carbon are present.

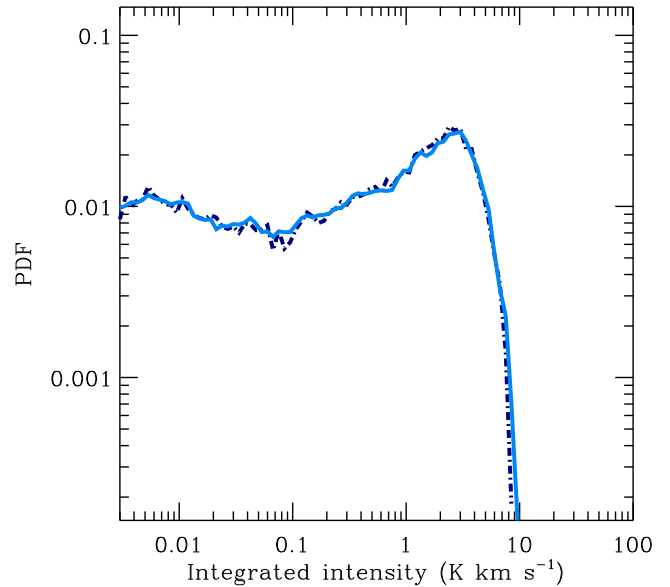


**Figure A1.** PDF of the velocity-integrated emission in the [C I]  $1 \rightarrow 0$  line, computed at a time  $t = 0.72$  Myr after the beginning of the simulation. The solid line is for a run with two million SPH particles, while the dot-dashed line is for a higher resolution run with 20 million SPH particles. There is slightly more emission from regions with very high integrated intensities in the high-resolution run, but otherwise the two PDFs are very similar.

In Fig. A1, we compare the PDF of  $W_{\text{C I},1-0}$  that we obtain in the two different simulations. The only real difference that is apparent is that the high-resolution simulation produces slightly more emission at high values of  $W_{\text{C I},1-0}$  than the low-resolution simulation. This may be a result of the fact that in the high-resolution simulation, we are better able to resolve the wings of the density PDF, and hence are capturing slightly more of the emission from dense, [C I] bright gas. However, the effect is small, and the mean [C I] integrated intensity changes by no more than around 5 per cent. It is therefore safe to conclude that the results presented in this study are not sensitive to the limited hydrodynamical resolution of our simulation.

## A2 RADMC-3D Post-processing

A second possible source of resolution dependence comes from our post-processing procedure. As described in Section 2.2, RADMC-3D cannot presently deal directly with SPH data, and hence we must interpolate our data on to a Cartesian grid before running the code. The results presented in Section 3 are all based on maps produced using a cubical grid with a side length of  $5 \times 10^{19}$  cm and a grid resolution of  $256^3$  zones. We have examined the sensitivity of our results to the choice of grid resolution by performing a similar post-processing step using a resolution of only  $128^3$  grid zones. In Fig. A2, we compare the PDF of  $W_{\text{C I},1-0}$  that we obtain with the two different grid resolutions. We see that they are almost identical, suggesting that our results are insensitive to our choice of grid resolution. In fact, it is easy to understand why this is the case. The size of a zone in the  $256^3$  case is around 0.06 pc. We can estimate the density at which our SPH smoothing length becomes smaller than a single grid zone by writing it as  $\rho = N_{\text{neigh}} M_{\text{part}} / V$ , where  $N_{\text{neigh}}$  is the number of neighbouring SPH particles smoothed over,  $M_{\text{part}}$  is the particle mass and  $V = 4\pi h^3 / 3$ , where  $h$  is the SPH smoothing length. In our calculations,  $N_{\text{neigh}} = 50$ ,  $M_{\text{part}} = 5 \times 10^{-3} M_{\odot}$ , and hence  $\rho \simeq 4 \times 10^{-24} (h/1 \text{ pc})^{-3} \text{ g cm}^{-3}$ . If we now set  $h = 0.06$  pc,



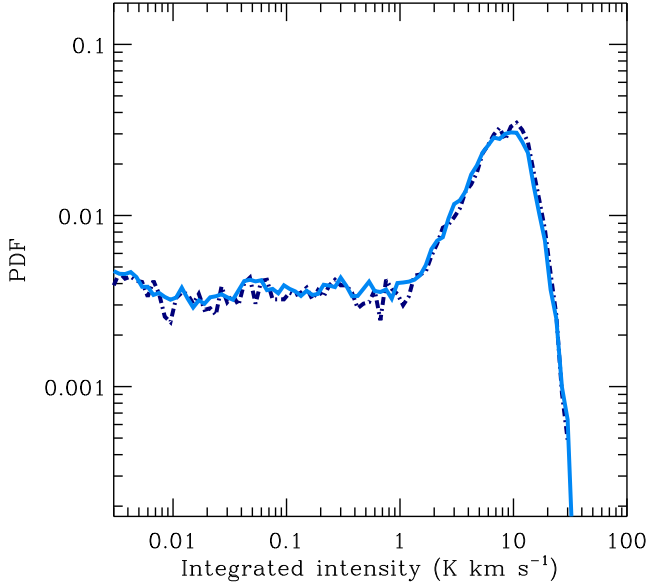
**Figure A2.** PDF of the velocity-integrated emission in the [C I]  $1 \rightarrow 0$  line. The two sets of results shown here were produced using different grid resolutions during the RADMC-3D post-processing step. The solid line corresponds to a grid resolution of  $256^3$  zones, while the dot-dashed line corresponds to a grid resolution of only  $128^3$  zones. The PDF produced using the lower resolution grid is somewhat noisier, particularly in the tail of the distribution at low intensities, but other than this, there is not a significant difference between the two distributions.

we find that  $\rho \simeq 2 \times 10^{-20} \text{ g cm}^{-3}$ , corresponding to a number density  $n \simeq 8000 \text{ cm}^{-3}$ . This value is significantly higher than the [C I] critical density, and Fig. 3 demonstrates that not only is most of the gas in our simulation found at densities below this, but so is most of the neutral atomic carbon. Therefore, the dense regions that are not well resolved by our  $256^3$  grid contribute only a small fraction of the total [C I] emission, and our failure to resolve these regions has little impact on our results.

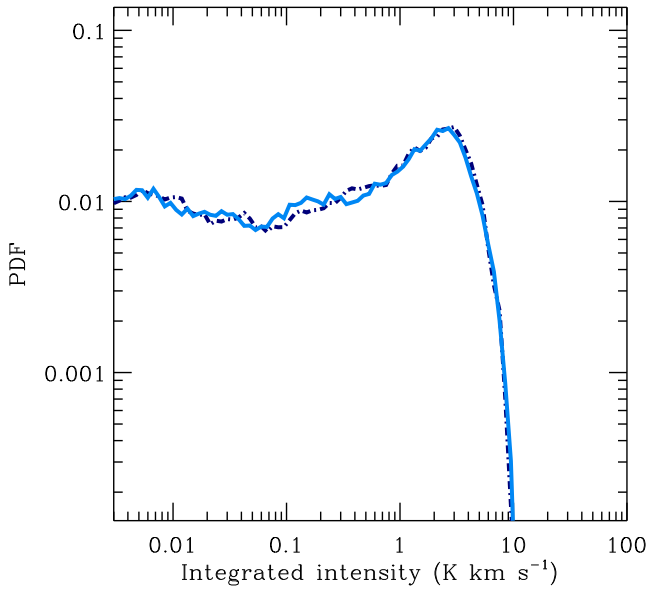
We have also performed a similar analysis for our CO emission maps (see Fig. A3). Once again, we find that our failure to resolve the highest density structures with our Cartesian grid has little impact on our results.

## A3 TREECOL

The final area in which the effects of limited numerical resolution may make themselves felt is in our treatment of the attenuation of the ISRF within the cloud. We model this using the TREECOL algorithm (Clark et al. 2012a). This algorithm provides us with an approximate  $4\pi$  steradian map of the column densities of hydrogen nuclei,  $\text{H}_2$  and CO seen by each SPH particle, discretized into a number of equal-area pixels using the HEALPIX pixelation scheme (Górski et al. 2005). The HEALPIX scheme involves splitting up the sphere into 12 equal-area base pixels, each of which can then be further subdivided. The amount of subdivision can be quantified by  $N_{\text{side}}$ , the number of pixels along each side of one of the base pixels; the total number of pixels then follows as  $N_{\text{pix}} = 12N_{\text{side}}^2$ . In TREECOL, by default we subdivide each of the HEALPIX base pixels into four subpixels, and hence  $N_{\text{side}} = 2$  and  $N_{\text{pix}} = 48$ . We have found in testing that this choice appears to give us the best balance between computational efficiency (which argues for a small value for  $N_{\text{pix}}$ ) and accuracy (which argues for a larger value). However, we have also investigated the extent to which our results depend upon this



**Figure A3.** As Fig. A2, but for the  $^{12}\text{CO } J = 1 \rightarrow 0$  line. Once again, we see that our grid resolution is sufficient to capture the bulk of the emission.



**Figure A4.** PDF of the velocity-integrated emission in the [C I]  $1 \rightarrow 0$  line. The solid blue line shows results from a simulation performed using  $N_{\text{pix}} = 48$  HEALPIX pixels in the TREECOL algorithm, while the dark blue dash-dotted line shows results from a simulation performed using  $N_{\text{pix}} = 192$  HEALPIX pixels. We see that the results are essentially indistinguishable.

choice. In Fig. A4, we compare the PDF of integrated intensity in the  $1 \rightarrow 0$  line of [C I] that we obtain from our default run with the corresponding distribution produced by a run with  $N_{\text{side}} = 4$  and  $N_{\text{pix}} = 192$ . We see that the results are essentially indistinguishable, justifying our decision to use a small value for  $N_{\text{pix}}$ .

## APPENDIX B: RELATIVE OPTICAL DEPTHS OF THE [C I] LINES

In this appendix, we examine whether there are any physical conditions in which the  $2 \rightarrow 1$  transition of [C I] is optically thick while the  $1 \rightarrow 0$  transition remains optically thin.

We can write the optical depth at line centre in a transition with upper state  $u$  and lower state  $l$  due to an absorber with physical size  $L$  as

$$\tau_{ul} = \int_0^L \alpha_{ul} ds, \quad (\text{B1})$$

where  $\alpha_{ul}$  is the absorption coefficient for the transition and we integrate along the path of the light ray through the absorber. The value of the absorption coefficient at the centre of the line can be written as

$$\alpha_{ul}(\nu_{ul}) = \frac{h\nu_{ul}}{4\pi} B_{ul} \left[ \frac{g_u}{g_l} n_l - n_u \right] \phi(\nu_{ul}), \quad (\text{B2})$$

where  $B_{ul}$  is the Einstein coefficient for stimulated emission for the transition,  $n_l$  and  $n_u$  are the number densities of absorbers in the lower and upper states,  $g_l$  and  $g_u$  are the statistical weights of these two states,  $\nu_{ul}$  is the frequency of the transition at the centre of the line, and  $\phi(\nu)$  is the line profile function. In general, for weak transitions such as the fine structure lines of [C I], Doppler broadening provides the dominant contribution to  $\phi(\nu)$ , allowing us to write its functional form as

$$\phi(\nu) = \frac{1}{\sqrt{\pi}\Delta\nu_D} e^{-(\Delta\nu/\Delta\nu_D)^2}, \quad (\text{B3})$$

where  $\Delta\nu = \nu - \nu_{ul}$ ,  $\Delta\nu_D = b(\nu_{ul}/c)$  is the Doppler width of the line and  $b = (2kT/m_C)^{1/2}$  is the Doppler broadening parameter. Its value at line centre is then simply

$$\phi(\nu_{ul}) = \frac{c}{\sqrt{\pi}b\nu_{ul}}. \quad (\text{B4})$$

If we assume, for simplicity, that the gas is isothermal, then  $b$  is independent of our position along the light ray and can be taken out of the integral, allowing us to write the optical depth of the transition as

$$\tau_{ul} = \frac{h\nu_{ul}}{4\pi} B_{ul} \frac{c}{\sqrt{\pi}b\nu_{ul}} \int_0^L \left[ \frac{g_u}{g_l} n_l - n_u \right] ds, \quad (\text{B5})$$

$$= \frac{hc B_{ul}}{4\pi^{3/2}b} \left[ \frac{g_u}{g_l} N_l - N_u \right], \quad (\text{B6})$$

where  $N_l$  and  $N_u$  are the column densities of absorbers in the lower and upper states, respectively. Using this expression, we can then write the ratio of the optical depth in the  $2 \rightarrow 1$  transition,  $\tau_{21}$ , to the optical depth in the  $1 \rightarrow 0$  transition,  $\tau_{10}$ , as

$$\frac{\tau_{21}}{\tau_{10}} = \frac{B_{21}}{B_{10}} \frac{g_0}{g_1} \left[ \frac{g_2 N_1 - g_1 N_2}{g_1 N_0 - g_0 N_1} \right]. \quad (\text{B7})$$

The statistical weights for the  $J = 0, 1$  and  $2$  fine structure levels of atomic carbon are  $g_0 = 1$ ,  $g_1 = 3$  and  $g_2 = 5$ , and so we can also write this as

$$\frac{\tau_{21}}{\tau_{10}} = \frac{1}{3} \frac{B_{21}}{B_{10}} \left[ \frac{5N_1 - 3N_2}{3N_0 - N_1} \right]. \quad (\text{B8})$$

Finally, since

$$B_{ul} = \frac{c^2}{2h\nu_{ul}^3} A_{ul}, \quad (\text{B9})$$

we have

$$\frac{\tau_{21}}{\tau_{10}} = \frac{1}{3} \left( \frac{\nu_{10}}{\nu_{21}} \right)^3 \frac{A_{21}}{A_{10}} \left[ \frac{5N_1 - 3N_2}{3N_0 - N_1} \right]. \quad (\text{B10})$$

Evaluating this using data on the frequencies and spontaneous transition rates for the two transitions taken from the LAMDA data base (Schöier et al. 2005), we find that

$$\frac{\tau_{21}}{\tau_{10}} \simeq 0.25 \left[ \frac{5N_1 - 3N_2}{3N_0 - N_1} \right]. \quad (\text{B11})$$

If we assume that all three fine structure levels of the carbon atom have their LTE level populations, then using this expression, it is easy to show that  $\tau_{21}/\tau_{10} < 1$  for all temperatures  $T < 40$  K, and that in the limit of large temperatures,  $\tau_{21}/\tau_{10} \sim 2$ . If the level populations are instead significantly subthermal, then the optical depth ratio is much smaller. We therefore see that it is indeed possible for the  $2 \rightarrow 1$  transition of [C I] to be optically thick while the  $1 \rightarrow 0$  transition remains optically thin, but that it requires rather unusual conditions: the gas must be hot, sufficiently dense that the level populations are close to LTE, and must have a total column density of carbon such that  $0.5 < \tau_{10} < 1.0$ . The last condition is particularly

restrictive, as it implies that for any given combination of temperature and density, the range of carbon column densities that gives rise to a situation with  $\tau_{10} < 1$  and  $\tau_{21} > 1$  spans only a factor of 2. For comparison, in our simulations, we find values of  $N_C$  spanning almost three orders of magnitude. Therefore, in most cases, either both lines will be optically thin, both will be optically thick, or the  $1 \rightarrow 0$  transition will be optically thick while the  $2 \rightarrow 1$  transition remains optically thin, with the last possibility being particularly likely when the excitation of the fine structure levels is subthermal.

In the particular case of the cloud modelled in this paper, we can be confident that we are never in a situation with  $\tau_{10} < 1$  and  $\tau_{21} > 1$ . As Fig. 1 demonstrates, almost all of the atomic carbon is found in gas with  $T < 40$  K, and the little that is not is found at densities  $n \ll n_{\text{crit}}$ , and hence will be subthermally excited.

This paper has been typeset from a  $\text{\TeX}/\text{\LaTeX}$  file prepared by the author.