

## THE PROGENITOR OF THE TYPE IIb SN 2008ax REVISITED

GASTÓN FOLATELLI<sup>1,2,3</sup>, MELINA C. BERSTEN<sup>1,2,3</sup>, HANINDYO KUNCARAYAKTI<sup>4,5</sup>,  
OMAR G. BENVENUTO<sup>1,2</sup>, KEIICHI MAEDA<sup>3,6</sup>, AND KEN'ICHI NOMOTO<sup>3,7</sup><sup>1</sup>Instituto de Astrofísica de La Plata, Argentina; [gaston@fcaglp.unlp.edu.ar](mailto:gaston@fcaglp.unlp.edu.ar)<sup>2</sup>Facultad de Ciencias Astronómicas y Geofísicas, Universidad Nacional de La Plata, Paseo del Bosque S/N, B1900FWA La Plata, Argentina<sup>3</sup>Kavli Institute for the Physics and Mathematics of the Universe (WPI), The University of Tokyo, Kashiwa, Chiba 277-8583, Japan<sup>4</sup>Millennium Institute of Astrophysics (MAS), Casilla 36-D, Santiago, Chile<sup>5</sup>Departamento de Astronomía, Universidad de Chile, Casilla 36-D, Santiago, Chile<sup>6</sup>Department of Astronomy, Kyoto University, Kitashirakawa-Oiwake-cho, Sakyo-ku, Kyoto 606-8502, Japan

Received 2015 July 16; accepted 2015 September 2; published 2015 September 30

## ABSTRACT

*Hubble Space Telescope* observations of the site of the supernova (SN) SN 2008ax obtained in 2011 and 2013 reveal that the possible progenitor object detected in pre-explosion images was in fact multiple. Four point sources are resolved in the new, higher-resolution images. We identify one of the sources with the fading SN. The other three objects are consistent with single supergiant stars. We conclude that their light contaminated the previously identified progenitor candidate. After subtraction of these stars, the progenitor appears to be significantly fainter and bluer than previously measured. Post-explosion photometry at the SN location indicates that the progenitor object has disappeared. If single, the progenitor is compatible with a supergiant star of B to mid-A spectral type, while a Wolf–Rayet (W-R) star would be too luminous in the ultraviolet to account for the observations. Moreover, our hydrodynamical modeling shows that the pre-explosion mass was 4–5  $M_{\odot}$  and the radius was 30–50  $R_{\odot}$ , which is incompatible with a W-R progenitor. We present a possible interacting binary progenitor computed with our evolutionary models that reproduces all the observational evidence. A companion star as luminous as an O9–B0 main-sequence star may have remained after the explosion.

*Key words:* supernovae: general – supernovae: individual (SN 2008ax)

## 1. INTRODUCTION

The question of what stellar system produces the different types of core-collapse supernovae (SNe) is still open. While it is accepted that hydrogen-rich (Type II-Plateau) SNe arise from relatively low mass stars in the red supergiant phase (Smartt et al. 2009), the nature of hydrogen-deficient (Types Ib and Ic) SN progenitors remains unclear (Eldridge et al. 2013). One crucial aspect is understanding what mechanisms are at play for envelope removal. In this respect it is interesting to focus the attention on the intermediate group of Type IIb SNe (SNe IIb), whose spectra evolve from hydrogen rich to hydrogen poor, and which has been suggested to originate from stars that lost most of their H-rich envelopes. Proposed mass-loss mechanisms are those of strong stellar winds or interaction in close binary systems. The former mechanism requires a very large mass of the SN progenitor, possibly with a Wolf–Rayet (W-R) or luminous blue variable (LBV) nature.

Remarkably, the firmest identifications of SN IIb progenitors in pre-explosion images—i.e., those of SN 1993J and SN 2011dh—have been associated with moderate-mass supergiants of spectral types F to K (Aldering et al. 1994; Van Dyk et al. 2002, 2011; Maund et al. 2011), hotter than the progenitors of Type II-Plateau SNe. Moreover, they were suggested to have formed close binary systems by the possible detection of their companion stars (Maund et al. 2004; Folatelli et al. 2014; Fox et al. 2014). SN 2008ax and SN 2013df are the other two SNe IIb with possible progenitor identifications in pre-explosion imaging. The case of SN 2008ax is revised in this work using newly available data. For SN 2013df, the candidate is again a cool, K-type supergiant star (Van Dyk

et al. 2014). These cases appear to indicate a prevailing close binary origin for SNe IIb. However, Gal-Yam et al. (2014) found signatures of a W-R-type wind in very early spectra of the SN IIb SN 2013cu.

The SN IIb SN 2008ax has been an important study case owing to its small distance and the availability of pre-explosion *Hubble Space Telescope* (HST) imaging and extensive multi-wavelength follow-up. Crockett et al. (2008) studied the pre-SN images and found a source at the SN location that was possibly the progenitor. With the then available data, the authors selected two out of a series of possible scenarios: a W-R star that retained a small amount of hydrogen, or an interacting binary system. The light curves and spectra indicated a relatively low ejected mass and normal kinetic energy (Pastorello et al. 2008; Roming et al. 2009; Tsvetkov et al. 2009; Maurer et al. 2010; Taubenberger et al. 2011; Jerkstrand et al. 2015). The low mass was generally interpreted as an indication against a single massive W-R progenitor. However, by including rotation in the evolutionary models of massive stars, Georgy et al. (2012) found a suitable progenitor born with 20  $M_{\odot}$  and ending with the correct core mass, hydrogen content, luminosity, and color to explain the complete set of observations. Groh et al. (2013a) reinterpreted the final stage of the rotating model as an LBV star and suggested that LBVs may be the progenitors of some core-collapse SNe.

One intriguing aspect of SNe IIb is the possible relation between progenitor radius (or H-envelope mass) and circumstellar medium (CSM) density. If the progenitor star can be detected in pre-SN observations, a radius can be determined. Alternatively, the shape of the UV–optical light curve during the first few days after explosion can also indicate the extent of the exploding star depending on the strength of the cooling

<sup>7</sup> Hamamatsu Professor.

**Table 1**  
Summary of *HST* Observations

Date	Instrument/ Detector	Filter	Exposure (s)	Program ID	Program PI
Pre-explosion					
1994 Dec 03	WFPC2/WFC	F606W	160	GO-5446	Illingworth
2001 Jul 02	WFPC2/PC	F300W	600	GO-9124	Windhorst
2001 Nov 13	WFPC2/WFC	F450W	460	GO-9042	Smartt
2001 Nov 13	WFPC2/WFC	F814W	460	GO-9042	Smartt
Post-explosion					
2011 Jul 12	WFC3/UVIS	F336W	1704	GO-12262	Maund
2011 Jul 12	WFC3/UVIS	F438W	1684	GO-12262	Maund
2011 Jul 12	WFC3/UVIS	F606W	1310	GO-12262	Maund
2011 Jul 12	WFC3/UVIS	F625W	1029	GO-12262	Maund
2011 Jul 12	WFC3/UVIS	F814W	1939	GO-12262	Maund
2013 Oct 29	WFC3/UVIS	F275W	2361	GO-13364	Calzetti
2013 Oct 29	WFC3/UVIS	F336W	1107	GO-13364	Calzetti
2013 Oct 29	WFC3/UVIS	F438W	953	GO-13364	Calzetti
2013 Oct 29	WFC3/UVIS	F555W	1131	GO-13364	Calzetti
2013 Oct 29	WFC3/UVIS	F814W	977	GO-13364	Calzetti

emission from the shocked envelope (Woosley et al. 1994; Bersten et al. 2012, 2014). The CSM can be probed through radio and X-ray observations, and this can be linked to the mass-loss history of the progenitor. When a dense CSM is present, shock-heated gas can also produce optical emission at late times, typically evident in box-like emission lines in the spectra and a slow-down of the light curve as compared to the usual radioactive-power decline rate. These phenomena were observed in the SNe Iib SN 1993J (Matheson et al. 2000a, 2000b) and SN 2013df (Maeda et al. 2015).

Chevalier & Soderberg (2010) suggested that radio properties of core-collapse SNe provide information about the size of the progenitor and proposed that SNe Iib were divided into those with compact (W-R-like) and those with extended (supergiant) progenitors. SN 2008ax was placed in the compact category, while SN 1993J belonged to the extended one. Bersten et al. (2012), however, showed that such a connection breaks down for SN 2011dh. Nonetheless, by restricting to the three SNe Iib with direct progenitor detections and estimates of the CSM density (SN 1993J, SN 2011dh, and SN 2013df), Maeda et al. (2015) suggest that SNe with more extended progenitors may have denser surrounding media, possibly owing to a larger mass-loss rate near the time of explosion. The range of radii goes from  $\approx 200 R_{\odot}$  in SN 2011dh to  $\approx 600 R_{\odot}$  in SN 1993J and SN 2013df. There is a wide variety of SN Iib light curves observed during the first few days after explosion, which may indicate a range of progenitor radii. However, it is not clear whether the relation suggested by Maeda et al. (2015) holds in general, and whether it represents a continuum of progenitor properties or two distinct groups. Adding more objects to the CSM density–progenitor radius diagram is thus of critical importance to understand the evolutionary paths and mass-loss history of massive stars.

Since the work by Crockett et al. (2008), new *HST* imaging of the field of SN 2008ax has been obtained with longer exposure times and better spatial resolution than the pre-explosion ones. The new images allowed us to revisit the SN site in order to study the nature of the progenitor. In Section 2 we present the high spatial resolution images used in this work and provide estimates for the distance and extinction toward SN 2008ax. Section 3 is dedicated to the analysis of the pre-

and post-explosion photometry at the SN site. Section 4 presents the possible properties of the progenitor object based on hydrodynamical and stellar evolution models. Our conclusions are given in Section 5.

## 2. OBSERVATIONAL DATA

### 2.1. High-resolution Imaging

This work is based on high-resolution images of the field where SN 2008ax went off in NGC 4490. The observations are summarized in Table 1, including the images previously analyzed by Crockett et al. (2008) and new imaging obtained in 2011 and 2013. The former data set included images in four optical bands obtained at three different epochs with the Wide Field Planetary Camera 2 (WFPC2) mounted on *HST*. The SN site landed on WF detectors for the F450W, F606W, and F814W frames, yielding a pixel scale of  $0''.1 \text{ pixel}^{-1}$ . In the F300W frames the SN site was on the PC chip, with a pixel scale of  $0''.046 \text{ pixel}^{-1}$ . The new imaging was obtained in two epochs (in 2011 July and 2013 October) using the Wide Field Camera 3 (WFC3) of *HST* with a pixel scale of  $0''.04 \text{ pixel}^{-1}$ . In 2011 the F336W, F438W, F606W, F625W, and F814W bands were employed, while in 2013 the imaging was done in the F275W, F336W, F438W, F555W, and F814W bands. Along with a higher resolution, the new images are deeper than the pre-explosion ones.

Processed *HST* data were downloaded from the Hubble Legacy Archive<sup>8</sup> (HLA). The WFPC2 observations were performed in pairs of exposures with each filter. The combined F606W image had poor quality as a result of a misalignment of both exposures. We thus performed the image combination for that band using the DRIZZLEPAC package. The WFC3 images from 2011 and 2013 consisted of four and three integrations per band, respectively.

Crockett et al. (2008) obtained ground-based, high-resolution imaging of the SN while it was still bright in order to accurately determine the location of the SN. These observations were carried out in the *K* band using adaptive optics with the Altair/NIRI instrument mounted on the Gemini North

<sup>8</sup> <http://hla.stsci.edu>

Telescope. We obtained the raw images from the Gemini Science Archive<sup>9</sup> and processed them through sky subtraction and combination using the dedicated tools for NIRI in the `gemini` package of IRAF. The co-added image has excellent quality, with FWHM of  $0''.09$  ( $\approx 4.1$  pixels).

## 2.2. Distance and Extinction

Distance and extinction are usually the largest sources of uncertainty in the study of SN progenitors from direct detections. The distance to NGC 4490 has been computed as  $9.6 \pm 1.3$  Mpc by Pastorello et al. (2008) from an average of several measurements. This value has been extensively used in the literature for SN 2008ax. We note that the average includes distances derived from the recession velocity of the host galaxy. These are relatively large distances that involve large uncertainties given the small recession velocity of NGC 4490. In this work we instead adopt an updated distance of  $7.77 \pm 1.54$  Mpc, as provided by the NASA/IPAC Extragalactic Database (NED), based on seven measurements done with the Tully–Fisher (Tully 1988; Theureau et al. 2007; Karachentsev et al. 2013) and Sosies (Terry et al. 2002) methods.

Dust extinction in the direction toward SN 2008ax appears to be significant. The Milky Way (MW) contribution is small; the NED provides  $E(B - V)_{\text{MW}} = 0.019$  mag based on infrared dust maps of Schlafly & Finkbeiner (2011). For the host-galaxy reddening, several estimates have been given in the literature based on equivalent widths (EWs) of interstellar lines. Pastorello et al. (2008) inferred a reddening of  $E(B - V)_{\text{host}} = 0.3$  mag from the EW of the  $\text{Na I D}$  line and using the empirical relation of Turatto et al. (2003). Chornock et al. (2011) noted that the  $\text{Na I D}$  line is saturated and used the EW of the  $\text{K I } \lambda 7699$  line instead to derive  $E(B - V)_{\text{host}} = 0.5$  mag based on the relation of Munari & Zwitter (1997). Chornock et al. (2011) also provided an EW of the diffuse interstellar band at  $5780 \text{ \AA}$  observed in high-resolution spectra. With their value of  $228 \text{ m\AA}$  and the relation presented by Phillips et al. (2013), we obtain  $E(B - V)_{\text{host}} = 0.4 \pm 0.2$  mag, assuming a standard reddening law of Cardelli et al. (1989) with  $R_V = 3.1$ .

A more accurate measure of the host-galaxy reddening can be obtained from the color evolution. We compared the MW-corrected  $(B - V)$  colors of SN 2008ax with those of a sample of reddening-free stripped-envelope SNe observed by the Carnegie Supernova Project (Hamuy et al. 2006). The reddening-free sample is composed of SNe with no narrow  $\text{Na I D}$  absorptions and located relatively apart from star-forming regions. An average intrinsic  $(B - V)$  color curve was constructed from this sample between maximum light and 20 days after. The intrinsic colors evolve monotonically during this interval from  $(B - V) = 0.35$  to  $1.08$  mag, with a dispersion of  $0.06$ – $0.14$  mag. The color curve of SN 2008ax reproduced the same shape but shifted toward redder colors. We adopt the average shift as the color excess,  $E(B - V)_{\text{host}} = 0.27 \pm 0.02$  mag. Owing to the dispersion in the intrinsic colors, we consider a systematic uncertainty of  $\approx 0.1$  mag.

We also compared  $(V - R)$  colors evaluated at 10 days past  $V$ - and  $R$ -band maximum light with the intrinsic-color calibrations of Drout et al. (2011) of  $\langle (V - R) \rangle_{V10} = 0.26 \pm 0.06$  mag and  $\langle (V - R) \rangle_{R10} = 0.29 \pm 0.08$  mag, respectively. For SN 2008ax we measure  $(V - R)_{V10} = 0.51 \pm 0.03$  mag and

$(V - R)_{R10} = 0.57 \pm 0.03$  mag after correcting for MW reddening. An average of the differences from the reference values yields  $E(V - R)_{\text{Host}} = 0.26 \pm 0.07$  mag. Assuming a standard extinction law with  $R_V = 3.1$ , we obtain  $E(B - V)_{\text{Host}} = 0.38 \pm 0.08$  mag.

Considering the color excesses derived from observed colors, we adopt a host-galaxy reddening of  $E(B - V)_{\text{Host}} = 0.3 \pm 0.1$  mag. The same value was adopted by Crockett et al. (2008) in their analysis of the progenitor candidate, although their distance was  $\approx 20\%$  longer.

## 3. ANALYSIS

### 3.1. Image Registration and Photometry

We used the combined NIRI image to find the location of the SN on the F814W images obtained at different epochs. We employed 39 stars in common—the same stars at all epochs—to align the *HST* images with respect to the NIRI image. The registration produced  $x, y$  rms uncertainties of 28, 26 mas (0.28, 0.26 pixel), 8.8, 9.6 mas (0.22, 0.24 pixel), and 7.2, 11.2 mas (0.18, 0.28 pixel) for the 2001, 2011, and 2013 images, respectively. The location of the SN on the F814W images is shown in Figure 1 and corresponds to pixels [208.07, 553.01], [512.57, 556.96], and [3516.25, 2246.40] in the WFPC2 image, the 2011 WFC3 image, and the 2013 WFC3 image, respectively. We confirm the identification of the pre-SN object detected by Crockett et al. (2008) in the WFPC2 images. But the late-time WFC3 images reveal critical information previously unavailable about the possible SN progenitor.

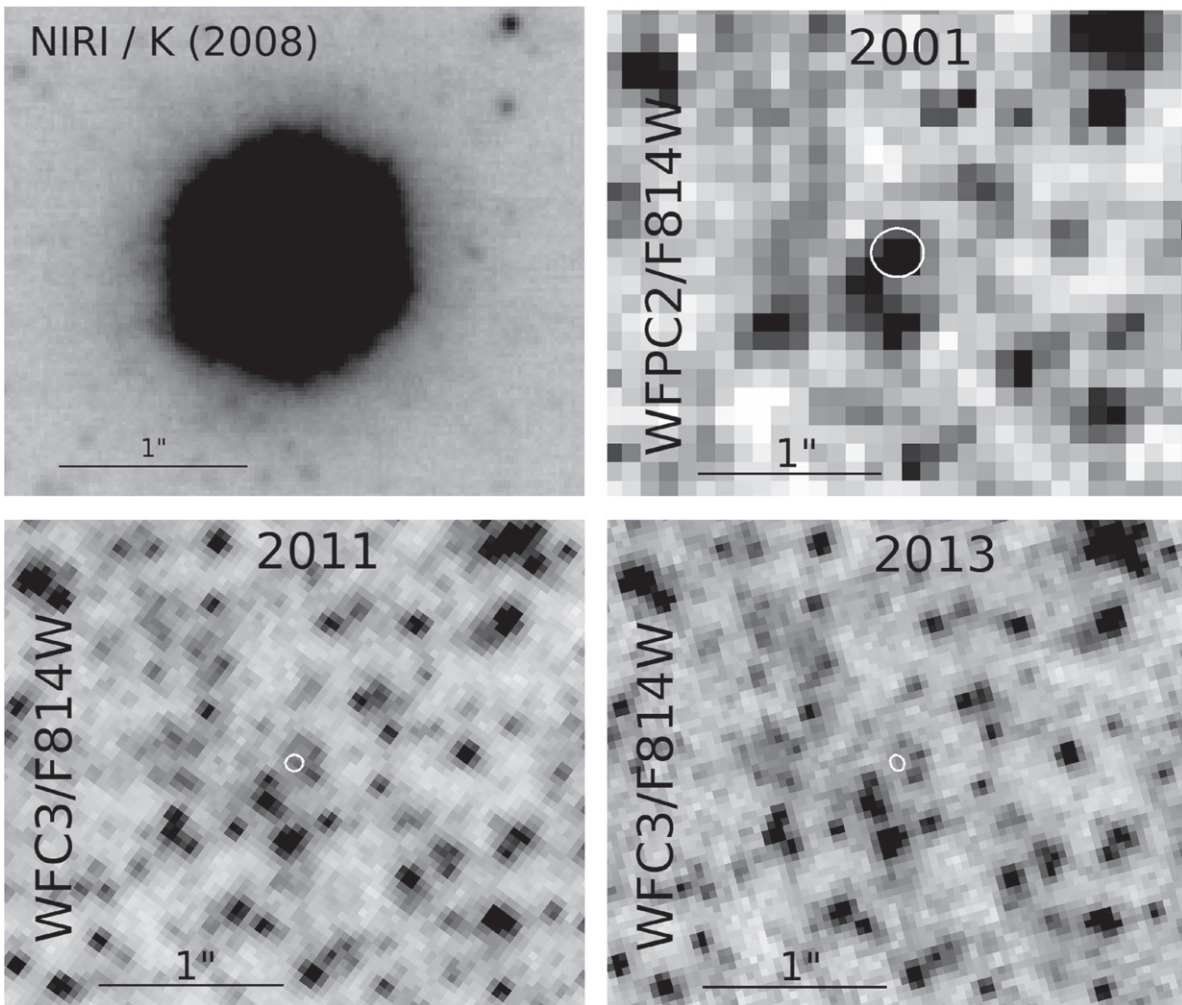
The first thing that strikes the eye from Figure 1 is that the object detected by Crockett et al. (2008) is in fact resolved into four sources in the 2011 image. The source to the SE matches the location of the SN to within  $\approx 1\sigma$ . We identify this source with the fading SN. Indeed, the 2013 images show that this source has disappeared within the noise. We indicate the other three sources with letters A, B, and C. The object identified by Crockett et al. (2008) as the progenitor candidate is thus contaminated by the light from objects A, B, and C.

Figure 2 shows the complete set of images used in this work. The identification of sources A, B, and C can be done in the rest of the WFC3 images from 2011 to 2013, except for the bluest bands, where the signal-to-noise ratio (S/N) is too low. We performed point-spread function (PSF) photometry of the pre-SN source present in the WFPC2 images and of the four sources identified in the WFC3 images. When the objects were not detected, we estimated limiting magnitudes as explained below.

The pre-explosion WFPC2 images were measured with the DAOPHOT package included in IRAF.<sup>10</sup> We employed the combined frames except in the F606W band, which showed poor alignment of the individual exposures. In that band we measured PSF photometry on the two images and averaged the results. The resulting photometry is listed in Table 2 (second row), compared with that obtained by Crockett et al. (2008) on the same images (first row). The values are consistent within the uncertainties. We obtain a larger uncertainty in the F606W band, probably owing to a larger inconsistency between the

<sup>9</sup> [www.cadc-ccda.hia-ihp.nrc-cnrc.gc.ca/en/gsa](http://www.cadc-ccda.hia-ihp.nrc-cnrc.gc.ca/en/gsa)

<sup>10</sup> IRAF, the Image Reduction and Analysis Facility, is distributed by the National Optical Astronomy Observatory, which is operated by the Association of Universities for Research in Astronomy (AURA), Inc., under cooperative agreement with the National Science Foundation (NSF); see <http://iraf.noao.edu>.



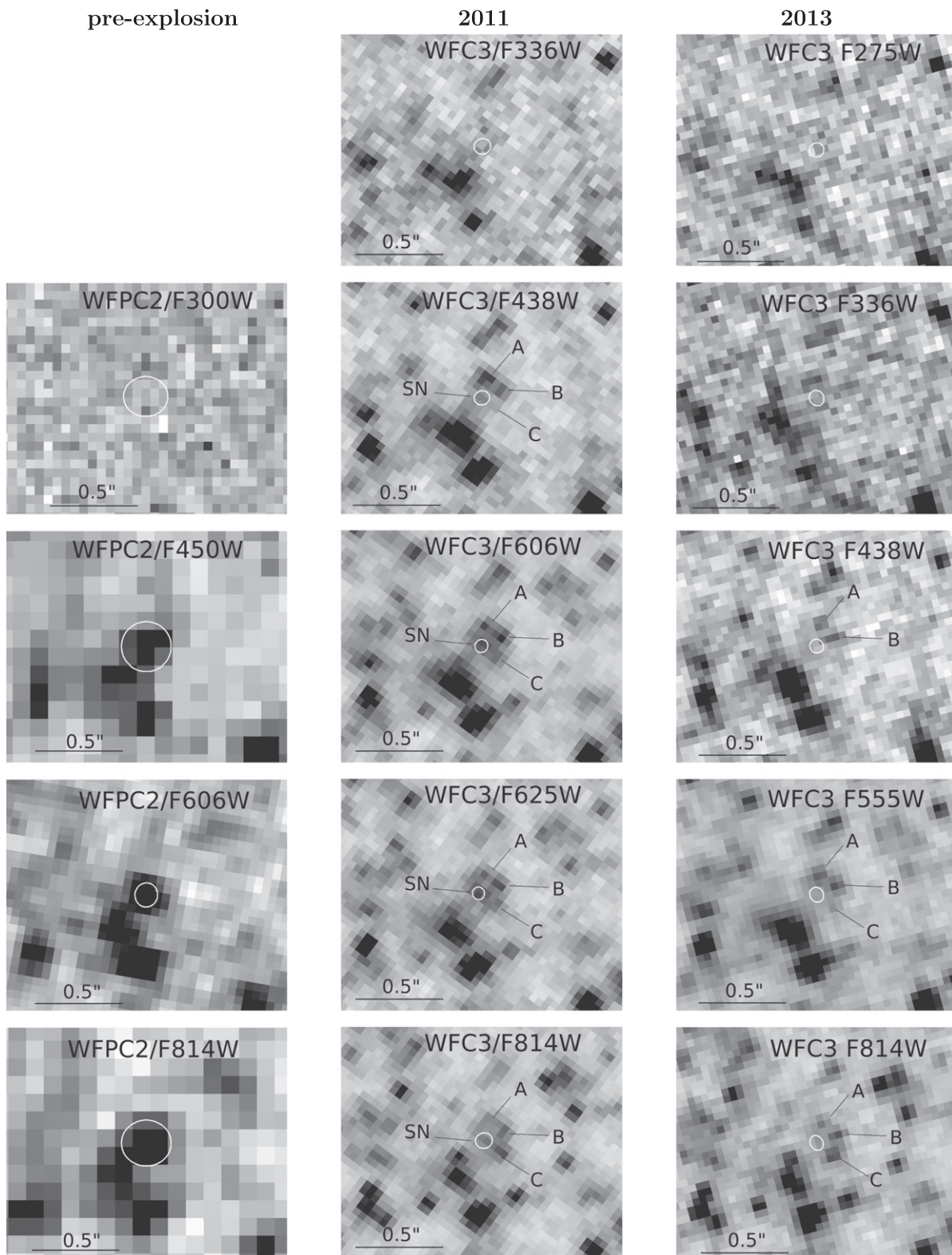
**Figure 1.** Top left: ground-based  $K$ -band image obtained in 2008, while the SN was bright, with Altair/NIRC2 at Gemini North Telescope. Top right: *HST* image of the SN site obtained before the explosion with WFC2 and filter F814W. Bottom row: *HST* images of the SN site obtained after the explosion using the WFC3/UVIS and filter F814W in 2011 (left) and 2013 (right). The four images are shown with the same scale of about  $3''.1$  by  $2''.6$  and aligned with north up and east to the left. The SN location as determined from the registration with the Gemini Altair/NIRC2 image is indicated in each *HST* frame with a white ellipse of  $5\sigma$  semi-axis in  $x$  and  $y$ . The object detected in the pre-explosion image is resolved into four objects in 2011, one of which is the progenitor candidate that fades away in 2013.

two individual exposures. We thus confirm that the magnitude in this band is about 0.3 mag brighter than what was originally reported by Li et al. (2008), who may have used the misaligned image from the HLA.

No object was detected at the SN location in the WFC2/F300W image (Figure 2). We thus estimated a limiting magnitude from the pixel statistics in the region of the PC chip around the SN site. Following Harris (1990), we defined the limiting magnitude for  $S/N = 5$  as that of an object with peak pixel value of three times the standard deviation of the background ( $\sigma_{\text{bkg}} = 0.008 \text{ counts s}^{-1}$ ). Owing to the lack of point sources in the PC chip, we could not compute a suitable PSF that would allow us to convert the detection threshold to a magnitude. Instead, we used the encircled energy fractions tabulated by Holtzman et al. (1995) for apertures of different radii. From Table 2(a) in Holtzman et al. (1995), the fraction of flux in a radius of 1 pixel versus 120 pixels is  $f_{1/120} = 0.33$  and 0.38 at the F255W and F336W bands, respectively, with a typical uncertainty of 0.05. We assumed that an average was valid for F300W, and thus the limiting flux was  $F_{\text{lim}}(\text{F300W}) = 3 \sigma_{\text{bkg}} \pi / f_{1/120} = 0.21 \text{ counts s}^{-1}$ . Using the flux calibration of WFC2 (Table 5.1 in Gonzaga & Biretta

2010), the limiting Vega-system magnitude corresponding to that flux is  $m_{\text{lim}}(\text{F300W}) = -2.5 \log(F_{\text{lim}}(\text{F300W}) \times \text{PHOTFLAM}) - \text{Vega}_{\text{ZP}}$ . With  $\text{PHOTFLAM} = 6.137 \times 10^{-17}$  and  $\text{Vega}_{\text{ZP}} = 19.406 \text{ mag}$ , this is  $m_{\text{lim}}(\text{F300W}) = 22.8 \text{ mag}$ . This value is similar to that of 22.9 mag obtained by Crockett et al. (2008).

On the WFC3 images we used the DOLPHOT v2.0 package (Dolphin 2000). DOLPHOT provides a magnitude from each exposure. We only considered those measurements where the object was detected in all frames. In those cases, the final magnitude was obtained as a weighted average of the individual measurements. In other cases we estimated a limiting magnitude based on the local pixel statistics. The detection limit was set as three times the background standard deviation, and this value was converted into a limiting magnitude in the Vega system using the PSF computed for the image. The resulting magnitudes and limits are listed in Table 3. The photometry of objects A, B, and C remains stable within the uncertainties between 2011 and 2013, while the object identified as the SN in 2011 is no longer detected in 2013. The limits at the latter epoch indicate that the SN became, as expected, fainter with time.



**Figure 2.** *HST* images of the field of SN 2008ax. All images are oriented with north up and east to the left, and the field size is approximately  $1''.6$  by  $1''.3$ . Left column: pre-explosion images obtained in 1994/2001 with WFPC2. Middle column: post-explosion images obtained in 2011 with WFC3/UVIS. Right column: post-explosion images obtained in 2013 with WFC3/UVIS. All images have been registered to the Altair/NIRI image, and the location of the SN is indicated with a  $5\sigma$  error ellipse. The SN is still detected in 2011, but it is below the detection limit in the shallower images from 2013. Three stars have been identified in the 2011 and 2013 WFC3 images that appear blended to the SN progenitor in the coarser-resolution WFPC2 pre-explosion images. Their locations in the images where they could be detected are indicated with letters “A,” “B,” and “C.”

**Table 2**  
Revised Photometry of the Pre-SN Object

Measurement	F300W (mag)	F450W (mag)	F606W (mag)	F814W (mag)	Reference
Contaminated <sup>a</sup>	>22.9 <sup>b</sup>	23.66(10)	23.36(10)	22.63(10)	Crockett et al. (2008)
Contaminated <sup>a</sup>	>22.8 <sup>b</sup>	23.69(13)	23.25(24)	22.73(09)	This work
Uncontaminated <sup>c</sup>	>22.9 <sup>b</sup>	24.14(22)	23.85(42)	23.61(22)	This work

**Notes.** Uncertainties given in parentheses in units of 1/100 of a magnitude.

<sup>a</sup> Photometry of the object detected in the pre-SN WFPC2 images.

<sup>b</sup>  $3\sigma$  detection limit.

<sup>c</sup> Revised photometry after subtraction of contributions from stars A, B, and C.

Objects A, B, and C are separated from the SN by  $0''.105$ ,  $0''.115$ , and  $0''.113$ , respectively, as measured in the F814W image. At the distance of NGC 4490, these correspond to projected separations of  $3.9 \pm 0.9$  pc,  $4.3 \pm 0.9$  pc, and  $4.3 \pm 0.9$  pc. Their profiles are compatible with being point sources, although the image resolution with  $\text{FWHM} \approx 0''.08$  corresponds to a projected diameter of  $\approx 3$  pc. Their relative brightness and separation from the SN site make them blend into one source in the WFPC2 images (see Figure 1). As already indicated by Crockett et al. (2008), the size of the source in the WFPC2 images is actually compatible with it holding more than one star.

### 3.2. Spectral Energy Distribution

In order to remove the contamination of the three neighboring sources from the proposed SN progenitor found in the pre-explosion WFPC2 images, we determined their spectral energy distributions (SED). For this purpose, we transformed the magnitudes into specific fluxes at the effective wavelength of each band. The results were put in absolute scale by adopting a distance modulus of  $29.42 \pm 0.42$  mag as given by NED. We further assumed the extinction to be the same for the four objects as that derived for the SN in Section 2.2. The corrected SEDs for objects A, B, and C are shown in the left panel of Figure 3.

The SEDs were fit with stellar atmosphere models from Kurucz (1993). The results are shown in Figure 3, and the corresponding effective temperatures and luminosities are given in Table 4. These fits indicate that the objects are compatible with being single stars. The sum of the SED from stars A, B, and C was assumed to have contaminated the photometry of the pre-explosion object detected in the WFPC2 images. The total A+B+C SED flux was checked by computing photometry through a large aperture of 4.5 pixel radius that encompassed the three stars in the 2011 and 2013 images after subtracting other nearby sources—including the SN itself in the 2011 images. The resulting fluxes were comparable (to within 20%–30%) with the summed SED in all bands. However, owing to the noise included in the large aperture, the unknown aperture correction, and the arbitrary aperture centering, this aperture photometry was too uncertain to be used in the following analysis. We instead computed synthetic photometry using the A+B+C SED in the WFPC2 bands and subtracted it from the observed SED of the pre-SN object. The resulting uncontaminated photometry is shown in the right panel of Figure 3 and listed in Table 2. We note that the contamination accounted for about 34%, 42%, and 55% of the pre-SN flux in the F450W, F606W, and F814W bands, respectively. The contribution in F300W was also calculated,

and it was subtracted from the upper flux limit of the pre-SN object in that band.

Figure 3 (right panel) also shows the SED of the remaining object at the SN location in the 2011 images (at  $t = 1224$  days after explosion) and the detection limits from the 2013 images (at  $t = 2063$  days after explosion). These calculations indicate that most of the flux of the pre-existing object—even after removing stars A, B, and C—has disappeared. The SED at 1224 days may be mostly due to the fading SN, as indicated by the strong decrease in flux at the F438W and F814W bands observed at 2063 days. The flux limits at 2063 days allow only for a small contribution from any other object than the progenitor itself. Such contributions are not greater than about 12%, 8%, and 18% of the pre-SN flux in F450W, F606W, and F814W, respectively. The limits in the bluest bands (F275W and F336W) place strong constraints on the near-UV emission of any putative leftover object (see Section 4.1).

## 4. THE PROGENITOR OF SN 2008AX

### 4.1. Progenitor SED

We fit the revised photometry of the progenitor object after removing the flux from the three nearby stars by assuming the SED of a single star using the atmosphere models of Kurucz (1993). The results of such a fit are illustrated in Figure 4. The best-fit model is that with  $T_{\text{eff}} = 11,200$  K and  $\log(L/L_{\odot}) = 4.69$ , roughly corresponding to a B6 Ia star. The uncertainties in the photometry and lack of detection in the F300W band allow for a relatively wide range of solutions. As shown by the confidence region in Figure 4, temperatures can be as low as  $T_{\text{eff}} = 7600$  K. Solutions with  $T_{\text{eff}} \geq 20,000$  K fail to comply with the upper limit in the F300W band. Most importantly, the resulting temperatures and luminosities are highly correlated. The solutions are within the realm of bright supergiants, with spectral types between B1 and A6. The stellar radii of the fitting models lie within a narrow range of 40–70  $R_{\odot}$ .

Alternatively, we tested the atmosphere models of SN progenitors computed by Groh et al. (2013b) for rotating and nonrotating massive stars of solar metallicity. Their models predict that SN IIb progenitors should end their evolution as red supergiants, yellow hypergiants, W-R stars, or LBV stars, depending on the initial mass and rotation. In Figure 4, right panel, we show the SED of the models in Groh et al. (2013b) computed from synthetic photometry through the WFPC2 filters. Based on rotating models and the uncorrected pre-SN photometry from Crockett et al. (2008), Georgy et al. (2012) showed that the progenitor of SN 2008ax was well reproduced by a 20  $M_{\odot}$  star initially rotating at 40% of the critical velocity. Groh et al. (2013a) later reinterpreted the final stage of that

**Table 3**  
Photometry from Post-explosion Images

Date	F275W	F336W	F438W	F555W	F606W	F625W	F814W
SN 2008ax							
2011 Jul 12	...	25.836(291)	26.085(125)	...	25.168(056)	24.877(110)	24.825(069)
2013 Oct 29	>25.6	>25.7	>26.6	>26.9	...	...	>25.6
Star A							
2011 Jul 12	...	26.063(326)	25.529(073)	...	25.333(123)	25.257(133)	24.847(111)
2013 Oct 29	>25.6	>25.7	25.984(177)	25.621(176)	...	...	25.065(160)
Average	>25.6	26.063(326)	25.613(103)	25.621(176)	25.333(123)	25.257(133)	24.898(096)
Star B							
2011 Jul 12	...	>26.2	25.903(118)	...	25.223(048)	25.112(073)	24.679(061)
2013 Oct 29	>25.6	>25.7	26.033(203)	25.559(073)	...	...	24.831(103)
Average	>25.6	>26.2	25.954(083)	25.559(073)	25.223(048)	25.112(073)	24.719(053)
Star C							
2011 Jul 12	...	>26.2	27.468(396)	...	25.619(081)	25.244(135)	24.348(047)
2013 Oct 29	>25.6	>25.7	>26.6	26.220(131)	...	...	24.379(077)
Average	>25.6	>26.2	27.468(396)	26.220(131)	25.619(081)	25.244(135)	24.356(040)

**Note.** Uncertainties given in parentheses in milimagnitudes.

model as an LBV star. At the time such an LBV progenitor not only was able to explain the available pre-SN photometry but also had a relatively low mass to explain the SN light curve (see Section 4.2) and a small amount of H to produce an SN IIb. With the revised distance and uncontaminated photometry presented here, however, this model no longer fits the pre-SN photometry, as shown in Figure 4.

A better fit to the revised pre-SN photometry in the F450W, F606W, and F814W bands is achieved using the rotating model with  $28 M_{\odot}$  from Groh et al. (2013b). However, the UV emission is too bright to comply with the upper limit in the F300W band (see Figure 4). Another problem of the model is the low H abundance at the final stage: the progenitor would be a WN star that would produce an SN Ib. A further complication is the final progenitor mass being  $\approx 8 M_{\odot}$ , which is too large to explain the light-curve timescale (Section 4.2). A possibly better solution could be that of the nonrotating  $25 M_{\odot}$  model, which, according to Groh et al. (2013b), leads to a final configuration that is compatible with an SN IIb event. As shown in the right panel of Figure 4 (green squares), the model is slightly underluminous in all bands. If, however, the distance is assumed to be shorter within the uncertainty, the fit to the observed pre-SN photometry can be improved. As mentioned before, the final mass of the model of  $8.2 M_{\odot}$  poses a problem when one considers the shape of the SN light curve.

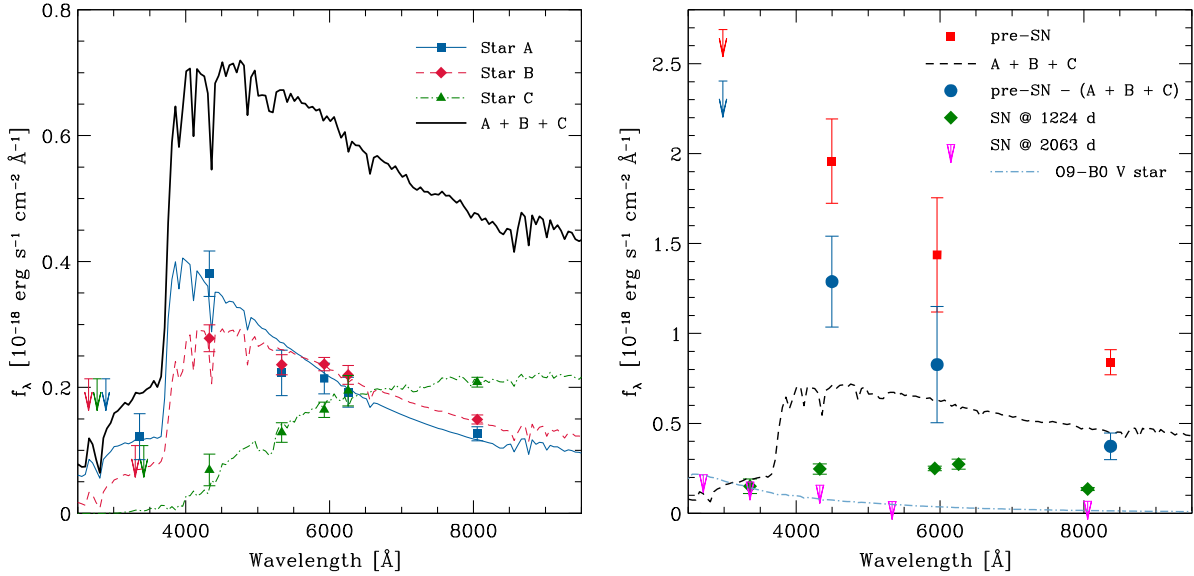
A different scenario that appears to be recurrent among stripped-envelope SNe and SNe IIb in particular is an interacting binary progenitor. In this case, the primary (donor) star explodes after transferring most of its H-rich envelope to the secondary (accreting) star. As a consequence, the secondary may remain after the explosion. The detection limits from 2013 place constraints on the brightness of any putative leftover companion star. The most luminous companion star allowed is an O9–B0 type, main-sequence star, as shown in the right panel of Figure 3. In Section 4.2 we provide support for a binary progenitor based on the mass of the pre-SN object obtained from hydrodynamical modeling of the SN light curve and expansion velocities. In Section 4.3 we present a possible binary system computed with our stellar evolution code that accounts for the pre-SN properties, along with complying with constraints from observations of the SN itself.

#### 4.2. Hydrodynamical Models

A set of explosion models were calculated in order to derive the possible physical parameters of SN 2008ax. For this purpose we used a one-dimensional Lagrangian LTE hydrodynamical code (Bersten et al. 2011) applied to stellar evolution pre-SN structures (Nomoto & Hashimoto 1988) with different He core masses. The methodology is the same that we applied in previous analyses of SNe IIb (e.g., see Bersten et al. 2012; Bufano et al. 2014), i.e., we first derived global parameters focusing on the explosion of H-free structures to fit the main peak of the bolometric light curve and the expansion velocities, and then we used such parameters to analyze the effect on the early light curve of a thin H-rich envelope with different extensions. In order to compare models and observations on the same time frame, we adopted an explosion date of  $JD = 2,454,528.80 \pm 0.15$  from Taubenberger et al. (2011).

The bolometric light curve was derived using the color-based bolometric corrections provided by Lyman et al. (2014). We adopted this approach over integrating the flux in the observed bands to obtain a more homogeneous result at all epochs independently of the wavelength coverage. The bolometric corrections take into account contributions from the UV and IR ranges that can be significant depending on the SN color. We employed the *BVRI* and *g'r'i'* light curves published by Pastorello et al. (2008), augmented by *BVRI* observations of Taubenberger et al. (2011). Bolometric corrections were derived using the calibrations for  $(B - V)$ ,  $(B - R)$ ,  $(B - I)$ ,  $(V - R)$ ,  $(V - I)$ ,  $(g' - r')$ , and  $(g' - i')$ . The colors above were corrected by MW and host-galaxy reddening as derived in Section 2.2. Observed magnitudes were corrected for extinction, and the resulting bolometric magnitudes were transformed to luminosities using the distance to NGC 4490, also given in Section 2.2. For each color a different result was obtained, thus yielding seven bolometric light curves. These were finally combined by interpolating each light curve to the epochs of the others and averaging the results.

In order to approximate the photospheric velocities calculated by our models, we adopted line expansion velocities derived from Doppler shifts of the He I  $\lambda 5876$  and Fe II  $\lambda 5169$  absorptions. He I  $\lambda 5876$  velocities were taken from Chornock et al. (2011) and Taubenberger et al. (2011), while Fe II  $\lambda 5169$  velocities were obtained from the latter work. Roughly after



**Figure 3.** Photometry and SED fits of objects in the SN site. Left panel: stars in the vicinity of SN 2008ax (A: blue squares; B: red diamonds; C: green triangles) with fitted stellar atmosphere SED from Kurucz (1993) (A: solid blue; B: dashed red; C: dot-dashed green). The black line is the sum of the fitted SED of the three stars. Right panel: pre-explosion photometry from WFPC2 including stars A, B, and C (red squares and red arrow for the upper limit in F300W), total SED of stars A, B, and C (black dashed line), uncontaminated pre-SN photometry (blue circles and arrow), SN photometry from WFC3 obtained in 2011 at 1224 days after explosion (green diamonds), and upper limits of SN flux from WFC3 obtained in 2013 at 2063 days after explosion (magenta arrows). The blue dot-dashed line shows the most luminous allowed companion star in the case of a binary progenitor, corresponding to an O9–B0 type main-sequence star.

**Table 4**

Fits to the SED of the Putative Progenitor and Neighboring Objects

Object	$T_{\text{eff}}$ (K)	$L/L_{\odot}$	Spectral Type
Star A	$9180 \pm 700$	$9400 \pm 1200$	A1 Iab
Star B	$7180 \pm 190$	$7640 \pm 210$	F2 Iab
Star C	$4300 \pm 150$	$8580 \pm 170$	K3 Iab
Progenitor <sup>a</sup>	7600–20000	$2.6\text{--}20 \times 10^4$	B–A Ia

**Note.**

<sup>a</sup> One-sigma ranges are given because  $T_{\text{eff}}$  and  $L/L_{\odot}$  are highly correlated, as shown in Figure 4.

day 10 since explosion He I  $\lambda 5876$  velocities began to flatten as the photosphere receded beyond the bottom of the He-rich layer. At such late times Fe II  $\lambda 5169$  presumably provides a closer approximation of the photospheric velocity. At early times, the Fe II  $\lambda 5169$  velocity has a flat behavior that may be due to contamination from other lines as the Fe II lines are rather weak. We thus adopted the He I velocities at  $t \lesssim 10$  days and the Fe II velocities afterward.

In the first stage of the modeling we derive the ejected mass, explosion energy, and radioactive nickel production by fitting the overall shape of the bolometric light curve and expansion velocity evolution. Figure 5 shows the observations compared with four models of different progenitor masses: (1) model He3 with He core mass of  $3.3 M_{\odot}$ , explosion energy of  $8 \times 10^{50}$  erg, and  $^{56}\text{Ni}$  mass of  $0.07 M_{\odot}$ ; (2) model He4 with He core mass of  $4 M_{\odot}$ , explosion energy of  $1 \times 10^{51}$  erg, and  $^{56}\text{Ni}$  mass of  $0.05 M_{\odot}$ ; (3) model He5 with He core mass of  $5 M_{\odot}$ , explosion energy of  $1.2 \times 10^{51}$  erg, and  $^{56}\text{Ni}$  mass of  $0.06 M_{\odot}$ ; and (4) model He6 with He core mass of  $6 M_{\odot}$ , explosion energy of  $2 \times 10^{51}$  erg, and  $^{56}\text{Ni}$  mass of  $0.07 M_{\odot}$ .

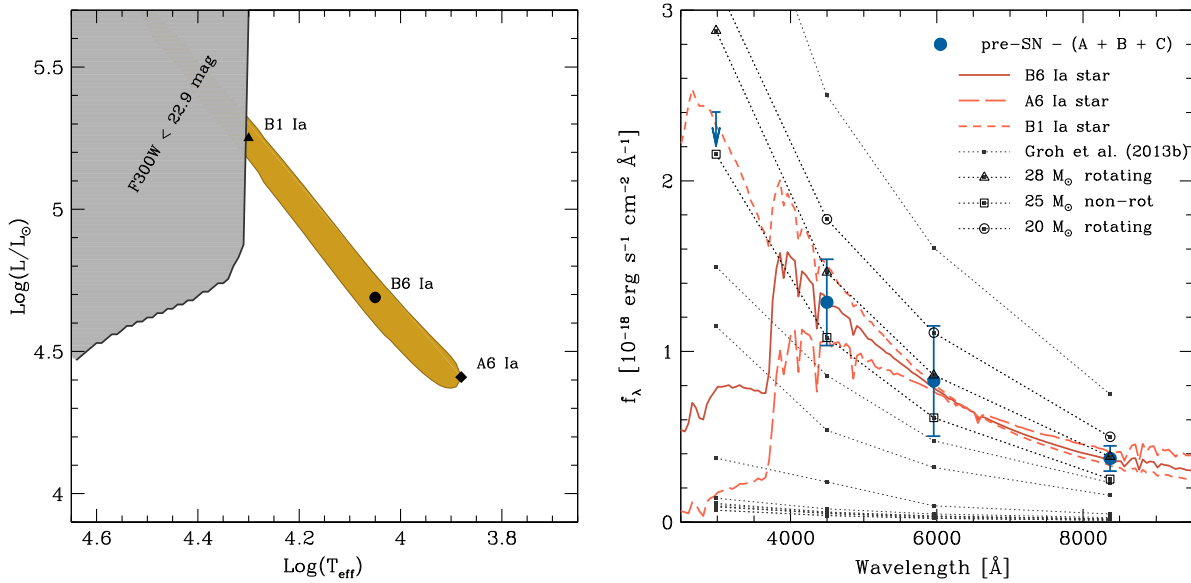
We consider that models He3, He4, and He5 give a fair representation of the observations judging all the uncertainties

involved, whereas model He6 provides an overall worse fit to the light-curve shape and velocity evolution. The range of validity of the model parameters is roughly given by the three former solutions. Note that models He4 and He5 provide a better fit on the rising part of the bolometric light curve than model He3, but the latter gives a better match to the main peak and subsequent decline. While He5 produces a slightly overestimation of the tail luminosity, He4 has a lower peak and slightly wider light curve than what was observed. On the other hand, He3 gives the best approximation to the late-time photospheric velocity evolution as traced by the Fe II  $\lambda 5169$  line. Even if models He4 and He5 provide higher photospheric velocities than the observed ones, we consider that they are acceptable given the uncertainties involved. Contrarily, model He6 departs from the observations in an unsolvable manner. Its light curve is too wide, the initial rise is not well reproduced, and the late-time velocities are too large. If the energy were lowered to improve the match to the velocities, the resulting light curve would be even wider and the initial luminosity evolution would be even lower.

This analysis suggests that the progenitor of SN 2008ax had an He core mass of  $\lesssim 5 M_{\odot}$ . In order to have this low He core mass, the progenitor necessarily had a zero-age main-sequence (ZAMS) mass below  $25 M_{\odot}$ , thus favoring a binary origin. Our conclusions are consistent with previous results based on analytical modeling (Pastorello et al. 2008; Roming et al. 2009; Taubenberger et al. 2011).

Early photometry obtained within a few days from explosion can serve to reveal the progenitor structure and, in particular, the extent of its H-rich envelope (e.g., see Bersten et al. 2012, 2014). During this phase, before radioactivity begins to dominate, the light curve is regulated by the physical conditions of the shock-heated ejecta. This, in turn, leads to an initial luminosity decline usually referred to as the “cooling phase.” The more extended the progenitor structure, the higher





**Figure 4.** Single-star progenitor fits. Left panel: confidence region with 68% probability (yellow shaded area) in the HRD from fits of Kurucz atmosphere models to the pre-SN object photometry. Red symbols show the parameters of model SED shown in the right panel, as labeled. The gray shaded region is forbidden by the detection limit in the F300W band. Right panel: uncontaminated photometry of the pre-SN object (blue circles and arrow) compared with model atmosphere SED (red lines). The best-fit model is shown with a solid line, roughly corresponding to a B6 Ia star. The long-dashed line shows the lowest-temperature model within the 68% probability region, corresponding to an A6 Ia star. The highest-temperature model allowed by the detection limit in F300W is shown with a short-dashed line and represents a B1 Ia star. Synthetic photometry from model atmospheres by Groh et al. (2013b) is shown with gray squares connected by dotted lines. Three of these models that are described in Section 4.1 are highlighted: a 28  $M_{\odot}$  rotating star (black triangles), a 25  $M_{\odot}$  nonrotating star (green squares), and a 20  $M_{\odot}$  rotating star (red circles).

the luminosity and temperature of the emitting region right after shock breakout, and the slower the subsequent decline. The effect on temperature makes the cooling phase more noticeable in the blue bands than in the red ones.

Interestingly, SN 2008ax was observed in the UV range by the *Swift* satellite soon after the explosion (Romíng et al. 2009). The *Swift*/UVOT data in the UV bands showed an initial decline lasting for at least four days after explosion. This decline was not observed in the optical range, although a slower initial rise may be seen in the *Swift* *b* band (Romíng et al. 2009) and in the *g'* band (Pastorello et al. 2008). These observations are reminiscent of a post-shock cooling phase. We thus investigated whether the early light curves provided information about the progenitor extent based on our hydrodynamical modeling.

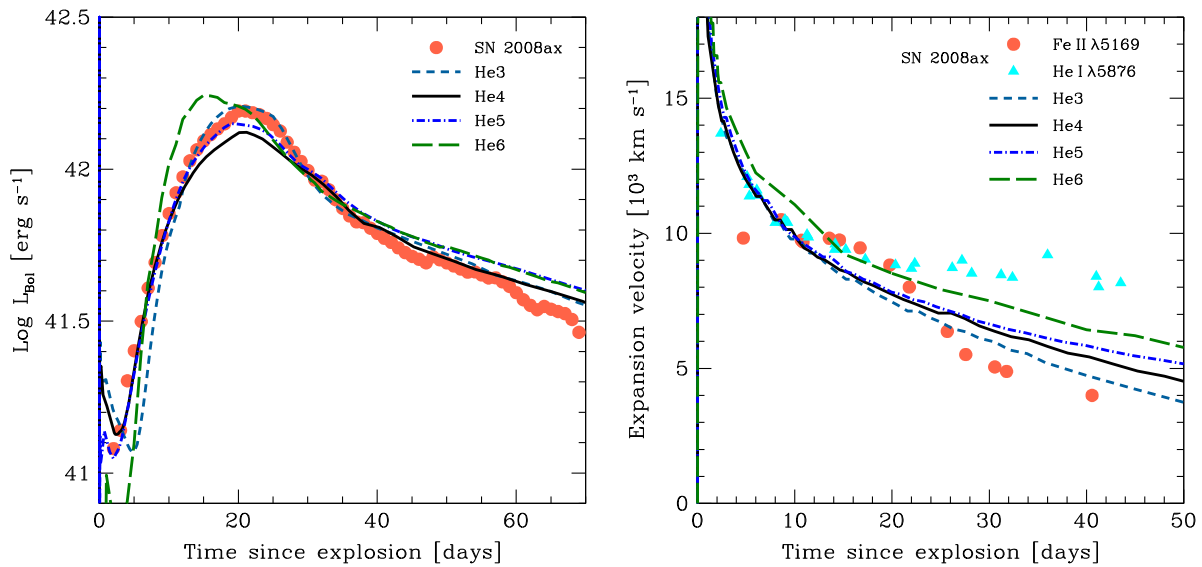
We considered our H-free He5 initial stellar structure, which has a radius of  $R = 2 R_{\odot}$ , and modified it by adding thin H-rich envelopes of different extent to  $R = 30, 50,$  and  $100 R_{\odot}$  and masses of  $0.02\text{--}0.04 M_{\odot}$ . With these initial structures we computed the hydrodynamics using the same explosion parameters as in the model shown in Figure 5. The left panel of Figure 6 shows the comparison of the resulting bolometric light curves with the observations at early times. Clearly, as the radius increases, the initial decline becomes more evident. After about five days since explosion, all the models converge as the light curve becomes regulated by  $^{56}\text{Ni}$  radioactivity. The comparison suggests that progenitor radii up to about  $30 R_{\odot}$  are allowed.

A caveat should be made about the accuracy of the bolometric luminosity at the earliest times when a significant fraction of the flux is expected to be emitted in the UV range. According to Pritchard et al. (2014), the observed colors of SN 2008ax indicate that the fraction of the total flux included in the *Swift* UV range is well below 10% at all epochs. And even if

the bolometric corrections from Lyman et al. (2014) can account for this contribution (see their Section 5.1), any extra flux at shorter wavelengths may have been missed. This is why in the following we decided to directly compare our models with light curves in individual *Swift*/UVOT bands.

For that purpose we assumed a blackbody emission to convert the modeled bolometric light curves into broadband light curves. This is a simple assumption, although at early times it may provide a valid approximation as the ejecta are sufficiently dense. We constrained our analysis to the *u*-band data since it showed the most clear initial decline. Bluer UV bands showed only upper limits at this early stage. The right panel of Figure 6 shows the comparison of our extended He5 models with the *u*-band light curve. Absolute magnitudes were obtained from the observations by assuming a distance modulus and extinction as derived in Section 2.2 (i.e., *u*-band extinction of  $A_u = 1.47 \text{ mag}$ ). Although the models fail to exactly reproduce the low luminosity at  $t < 5$  days, presumably owing to the blackbody approximation, we can qualitatively see that the more extended the progenitor, the larger the initial decline and the later the light-curve minimum occurs. Also, the extended models produce a smaller contrast between the minimum and the subsequent maximum of the light curve. The apparent duration and depth of the observed minimum would indicate that the most favored models are those between 30 and  $50 R_{\odot}$ .

We performed a similar analysis based on the He3 and He4 models and found a worse comparison with the observations. In particular, as the core mass decreases, the *u*-band light curve becomes more luminous. This is a consequence of the increased temperatures reached by the ejecta due to the shock wave propagation. Although the approximations involved may prevent a definitive conclusion from being driven, the overall trends of the *u*-band analysis seem to indicate that the mass of



**Figure 5.** Left panel: observed bolometric light curve of SN 2008ax (circles) compared with the results of the light-curve calculations for models He3 (dotted line), He4 (solid line), and He5 (dashed line). Right panel: evolution of the photospheric velocity for models He3 (dashed line), He4 (solid line), and He5 (dot-dashed line) compared with measured line velocities from the He I  $\lambda 5876$  (triangles) and Fe II  $\lambda 5169$  (circles) lines.

the progenitor was between 4 and 5  $M_{\odot}$  and its radius was between 30 and 50  $R_{\odot}$ . Indeed, the location of the pre-SN object in the Hertzsprung–Russell diagram (HRD; see Section 4.3) indicates an extended structure for the progenitor of  $R \approx 40 R_{\odot}$ .

#### 4.3. A Binary Progenitor

We now consider whether the results from the previous sections can be interpreted in the frame of the theory of binary stellar evolution. For this purpose we computed several models with the aim of accounting for the pre-SN photometry and, simultaneously, the observed light curve of SN 2008ax. A successful model should produce a progenitor with a final mass of  $\approx 4 M_{\odot}$ , to reproduce the SN light curve, and a small amount of hydrogen in the outermost layers, to satisfy the SN classification as Type IIb.

We employed the code described in Benvenuto & De Vito (2003), updated to consider the case of massive binaries as presented in Benvenuto et al. (2013). Our stellar code handles the mass transfer process in a fully implicit way. We considered models with solar chemical composition and ignored the effects of rotation. Furthermore, we assumed that the companion star is able to retain a fraction  $\beta$  of the material transferred by the primary (the one that explodes).  $\beta$  is kept fixed throughout the entire evolution of the pair. We ended the calculations at oxygen exhaustion. Since the remainder of the primary evolution occurs during a very short timescale and only affecting its core, it is safe to assume that the stars do not significantly move any further in the HRD.

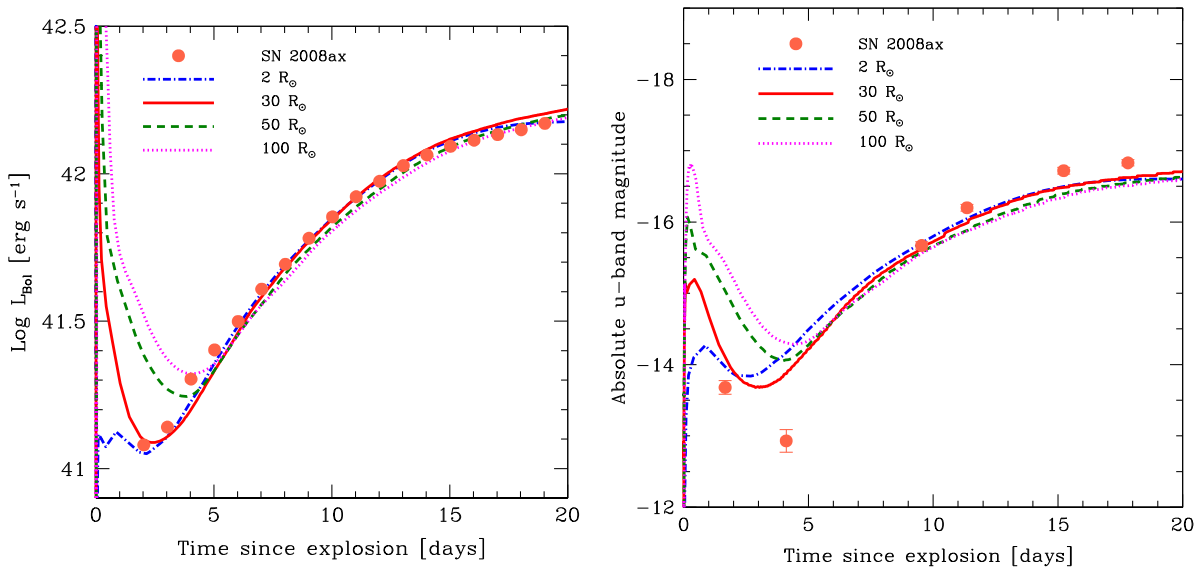
We explored the parameters of the problem—the masses of the components and the initial orbital period,  $P_{\text{orb}}^i$ —based on our study of SN 2011dh (Benvenuto et al. 2013). In comparison, for SN 2008ax we found slightly larger initial masses and a much shorter  $P_{\text{orb}}^i$ . The observations of SN 2008ax are fulfilled with a pair of  $18 M_{\odot} + 12 M_{\odot}$  on an orbit

with  $P_{\text{orb}}^i = 5$  days, while for SN 2011dh we proposed a pair with  $16 M_{\odot} + 10 M_{\odot}$  and  $P_{\text{orb}}^i = 125$  days.

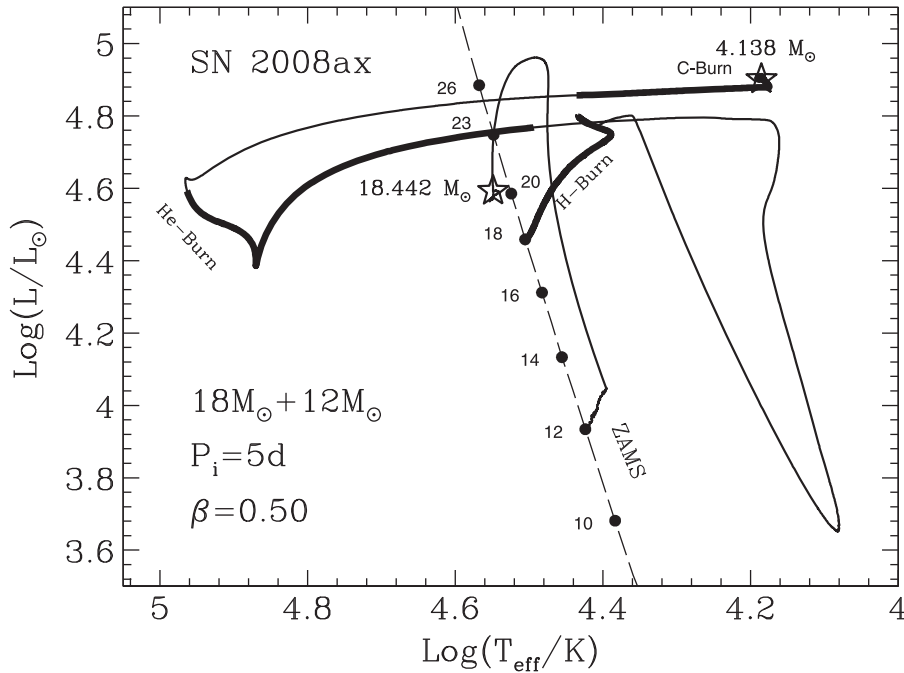
In Figure 7 we show the resulting evolutionary track for the case of  $\beta = 0.50$ . Shortly after the end of the core hydrogen burning stage, the primary star undergoes Roche lobe overflow (RLOF), i.e., a Class B mass transfer episode. The main mass transfer episode starts at an age of 9.785 Myr and lasts for only 26 kyr. The star detaches from its Roche lobe with a mass of  $4.376 M_{\odot}$ ; thus, the mean mass transfer rate is  $5.08 \times 10^{-4} M_{\odot} \text{ yr}^{-1}$ , while the maximum value is  $2.30 \times 10^{-3} M_{\odot} \text{ yr}^{-1}$ . Core helium burning starts soon after the end of the RLOF, and most of it is burned during the large blue loop in the HRD. When central helium is exhausted, the star begins to swell again, evolving to lower effective temperature conditions. Then, the primary star begins to burn carbon and quickly undergoes the second RLOF that lasts up to explosion. The companion star reacts to accretion by swelling appreciably, but it does not fill its own Roche lobe at any moment; therefore, the binary never reaches a contact configuration and thus avoids suffering a common-envelope episode.

The primary explodes at an age of 11.02 Myr. At these conditions, the pre-SN has a mass of  $4.14 M_{\odot}$  and a radius of  $40.7 R_{\odot}$ . Most of its radius is occupied by the outer hydrogen-rich layer (outward of  $1.4 R_{\odot}$ ) containing only  $0.06 M_{\odot}$ . The total amount of hydrogen in the outer layer is  $\approx 3.6 \times 10^{-3} M_{\odot}$ . At that moment, the companion has a mass of  $18.44 M_{\odot}$  with a luminosity and effective temperature very similar to those corresponding to a  $20 M_{\odot}$  star on the ZAMS (see Figure 7); hence, it is somewhat overluminous.

The parameters chosen for the binary system satisfy the effective temperatures and luminosities for both stars just before the explosion and also a primary structure capable of accounting for the light curve and classification of SN 2008ax. However, we should remark that this is not a unique solution because the parameters are degenerate. For example, we may have chosen a higher initial mass for the companion and a



**Figure 6.** Left panel: observed bolometric light curve of SN 2008ax (circles) at early times compared with hydrodynamical models for progenitors with  $5 M_{\odot}$  helium cores and different extensions of the H-rich envelopes (lines). Model He5 from Figure 5 is that with  $2 R_{\odot}$ . Right panel: observed *Swift*/*UVOT* *u*-band light curve (circles; Roming et al. 2009) compared with the same models as in the left panel. A blackbody was assumed to calculate the *u*-band luminosity from the models.



**Figure 7.** Evolutionary tracks in the Hertzsprung–Russell diagram for a binary system of  $18 M_{\odot} + 12 M_{\odot}$  on an orbit with  $P_{\text{orb}}^i = 5$  days. The ZAMS locus is shown for reference by a dashed line with some mass values (in solar units) denoted with filled dots. Each track starts at the corresponding location on the ZAMS. Thick portions of the primary track indicate stages of active core burning. The conditions at the moment of explosion are shown with stars. The primary star undergoes RLOF after hydrogen core exhaustion. When it detaches, it has a mass of  $4.376 M_{\odot}$  and starts a blueward loop on which it burns out its helium core. After that, it swells and undergoes a final RLOF, on which it completes carbon and subsequent nuclear cycles (neon, oxygen, and silicon burning), and it finally explodes. Simultaneously, the companion star accretes half (because we set  $\beta = 0.50$ ) of the transferred material, reaching a final mass of  $18.442 M_{\odot}$ .

lower value of  $\beta$  to reach a similar final mass. In any case, it seems virtually impossible to find a final mass of the primary of  $4\text{--}5 M_{\odot}$ —suitable to account for the observed light curve—if the initial primary mass is modified by more than about  $\pm 2 M_{\odot}$ .

The results presented in this section allow us to state that binary stellar evolution is able to provide a successful progenitor scenario to explain the main characteristics of SN 2008ax.

## 5. CONCLUSIONS

SN 2008ax has been one of the best-studied SNe IIB to date. Along with extensive, multiwavelength follow-up observations, the existence of deep pre-explosion *HST* images placed this object among a selected group of SNe IIB for which a progenitor could be characterized, as first done by Crockett et al. (2008). Since then, additional observations of the SN site were obtained with even higher resolution using the WFC3 camera on board *HST*. The new images allowed us to revisit the

progenitor candidate and to discover that it was in fact a multiple source. After subtracting the light from three nearby stars, the revised progenitor photometry was significantly fainter and bluer than what was measured on the pre-explosion images. Moreover, the new images showed a fading source coincident with the SN location and demonstrated that most of the light from the pre-SN source had disappeared. This observation unambiguously showed the correct identification of the exploding star. SN 2008ax is thus the third SN I Ib, after SN 1993J and SN 2011dh, with a firm progenitor detection.

Comparing the revised photometry with stellar atmosphere models, we found that the progenitor, if single, was compatible with a B- to mid-A-type supergiant star. Contrarily, pre-SN models of W-R and LBV stars calculated by Groh et al. (2013b), some of which had been proposed for SN 2008ax based on the contaminated photometry, are not compatible with the new photometry. Detection limits from the 2013 images allow for a relatively faint source to be left at the SN site. We estimated that any such remaining object could be as luminous as an O9–B0 main-sequence star.

Using hydrodynamical models to reproduce the bolometric light curve and photospheric velocity evolution, we arrived at the conclusion that the exploding object had a relatively low mass of 4–5  $M_{\odot}$ , similarly to what had been concluded based on other techniques. From a comparison with the early light curves, especially those in the UV range, we additionally concluded that the progenitor must have had a relatively extended structure, with a low-density H-rich envelope reaching about 30–40  $R_{\odot}$ . Such a low mass and extended radius disfavor a massive progenitor that loses the outer envelope via stellar winds and ends its life as a W-R or LBV star. We note that even if the favored progenitor appears as a blue supergiant star, resembling those of SN 1987A-like events, the stellar structure is substantially different in the case of SN 2008ax, with a much lower mass, extended H-rich envelope. The difference in H mass is what explains the dissimilar light-curve shape and spectroscopic properties between the SN I Ib SN 2008ax and the SN 1987A-like objects.

A viable alternative is that of an interacting binary system. In this case, the progenitor is allowed to be less massive and the envelope is lost through mass transfer to the companion star. We were able to provide such a binary model using our stellar evolution code. The model assumed a pair of 18  $M_{\odot}$  + 12  $M_{\odot}$  in a close orbit (with initial period of 5 days) that naturally explained the explosion of a nearly H-free,  $\approx 4 M_{\odot}$  star of  $R \approx 40 R_{\odot}$  with a remaining main-sequence companion that complied with the latest detection limits. The solution is not unique, but it demonstrates that the scenario is plausible. A definitive confirmation and characterization of the proposed binary progenitor would require a deep search for the companion star in future observations from space.

The case of SN 2008ax sheds light on the origin of SNe I Ib, which has implications for the progenitors of core-collapse SNe in general. To date there are three SNe I Ib with identified progenitors, namely, SN 1993J, SN 2008ax, and SN 2011dh, and one candidate for SN 2013df. Remarkably, in all of these cases the progenitors have been suggested to belong to binary systems. For SN 1993J and SN 2011dh there is further evidence of the presence of a hot companion star (Maund et al. 2004; Folatelli et al. 2014; Fox et al. 2014). This fact points to a possible common origin for SNe I Ib.

The history of mass loss for SN I Ib progenitors is a crucial aspect to understand their nature. From radio and X-ray observations and by studying the late-time optical spectra and light curves, evidence of substantial amounts of CSM has been found for SN 1993J and SN 2013df. Contrarily, SN 2008ax and SN 2011dh appear to have occurred in much “cleaner” environments. Such differences may indicate a different mass-loss history. In the interacting binary scenario, this may, in turn, be linked with the strength and timing of the mass transfer episodes and with the ability of the accreting star to retain the material. As pointed out by Maeda et al. (2015), the cases with denser CSM correspond to more extended progenitors, of over 500  $R_{\odot}$ . With a progenitor radius of only  $\approx 40 R_{\odot}$  as derived from our models, SN 2008ax would agree with the same picture. More objects are necessary to determine whether this is a general rule for SNe I Ib and whether the progenitor radius and CSM density follow a continuum of properties or they group into two distinct classes. Finally, the physical reason for such a possible distinction is yet to be known and would require detailed modeling of the progenitor evolution.

We would like to thank the Hubble Legacy Archive Hotseat Office, in particular Rick White, for valuable help with handling the WFPC2/F606W images. This research has been supported by the World Premier International Research Center Initiative (WPI Initiative), MEXT, Japan, and by Grants-in-Aid for Scientific Research (3224004, 26400222, and 26800100) and by JSPS Open Partnership Bilateral Joint Research Projects. Support for H.K. is provided by the Ministry of Economy, Development, and Tourism’s Millennium Science Initiative through grant IC120009, awarded to The Millennium Institute of Astrophysics, MAS. H.K. acknowledges support by CONICYT through FONDECYT grant 3140563. The present work is based on observations made with the NASA/ESA *Hubble Space Telescope* and obtained from the Hubble Legacy Archive, which is a collaboration between the Space Telescope Science Institute (STScI/NASA), the Space Telescope European Coordinating Facility (ST-ECF/ESA), and the Canadian Astronomy Data Centre (CADM/NRC/CSA). Gemini data were provided by the Canadian Astronomy Data Centre operated by the National Research Council of Canada with the support of the Canadian Space Agency. We have made use of the NASA/IPAC Extragalactic Database (NED), which is operated by the Jet Propulsion Laboratory, California Institute of Technology, under contract with the National Aeronautics and Space Administration.

## REFERENCES

- Aldering, G., Humphreys, R. M., & Richmond, M. 1994, *AJ*, 107, 662  
 Benvenuto, O. G., Bersten, M. C., & Nomoto, K. 2013, *ApJ*, 762, 74  
 Benvenuto, O. G., & De Vito, M. A. 2003, *MNRAS*, 342, 50  
 Bersten, M. C., Benvenuto, O. G., Folatelli, G., et al. 2014, *AJ*, 148, 68  
 Bersten, M. C., Benvenuto, O. G., & Hamuy, M. 2011, *ApJ*, 729, 61  
 Bersten, M. C., Benvenuto, O. G., Nomoto, K., et al. 2012, *ApJ*, 757, 31  
 Bufano, F., Pignata, G., Bersten, M., et al. 2014, *MNRAS*, 439, 1807  
 Cardelli, J. A., Clayton, G. C., & Mathis, J. S. 1989, *ApJ*, 345, 245  
 Chevalier, R. A., & Soderberg, A. M. 2010, *ApJL*, 711, L40  
 Chornock, R., Filippenko, A. V., Li, W., et al. 2011, *ApJ*, 739, 41  
 Crockett, R. M., Eldridge, J. J., Smartt, S. J., et al. 2008, *MNRAS*, 391, L5  
 Dolphin, A. E. 2000, *PASP*, 112, 1383  
 Drout, M. R., Soderberg, A. M., Gal-Yam, A., et al. 2011, *ApJ*, 741, 97  
 Eldridge, J. J., Fraser, M., Smartt, S. J., Maund, J. R., & Crockett, R. M. 2013, *MNRAS*, 436, 774  
 Folatelli, G., Bersten, M. C., Benvenuto, O. G., et al. 2014, *ApJL*, 793, L22  
 Fox, O. D., Azalee Bostroem, K., Van Dyk, S. D., et al. 2014, *ApJ*, 790, 17

- Gal-Yam, A., Arcavi, I., Ofek, E. O., et al. 2014, *Natur*, **509**, 471
- Georgy, C., Ekström, S., Meynet, G., et al. 2012, *A&A*, **542**, A29
- Gonzaga, S., & Biretta, J. 2010, HST WFPC2 Data Handbook, v. 5.0 (Baltimore, MD: STScI)
- Groh, J. H., Meynet, G., & Ekström, S. 2013a, *A&A*, **550**, L7
- Groh, J. H., Meynet, G., Georgy, C., & Ekström, S. 2013b, *A&A*, **558**, A131
- Hamuy, M., Folatelli, G., Morrell, N. I., et al. 2006, *PASP*, **118**, 2
- Harris, W. E. 1990, *PASP*, **102**, 949
- Holtzman, J. A., Hester, J. J., Casertano, S., et al. 1995, *PASP*, **107**, 156
- Jerkstrand, A., Ergon, M., Smartt, S. J., et al. 2015, *A&A*, **573**, A12
- Karachentsev, I. D., Makarov, D. I., & Kaisina, E. I. 2013, *AJ*, **145**, 101
- Kurucz, R. 1993, ATLAS9 Stellar Atmosphere Programs and 2 km/s grid. Kurucz CD-ROM No. 13 (Cambridge, MA: Smithsonian Astrophysical Observatory), 1993
- Li, W., Filippenko, A. V., & van Dyk, S. D. 2008, *CBET*, **1306**, 1
- Lyman, J. D., Bersier, D., & James, P. A. 2014, *MNRAS*, **437**, 3848
- Maeda, K., Hattori, T., Milisavljevic, D., et al. 2015, arXiv:1504.06668
- Matheson, T., Filippenko, A. V., Barth, A. J., et al. 2000, *AJ*, **120**, 1487
- Matheson, T., Filippenko, A. V., Ho, L. C., Barth, A. J., & Leonard, D. C. 2000, *AJ*, **120**, 1499
- Maund, J. R., Fraser, M., Ergon, M., et al. 2011, *ApJL*, **739**, L37
- Maund, J. R., Smartt, S. J., Kudritzki, R. P., Podsiadlowski, P., & Gilmore, G. F. 2004, *Natur*, **427**, 129
- Maurer, I., Mazzali, P. A., Taubenberger, S., & Hachinger, S. 2010, *MNRAS*, **409**, 1441
- Munari, U., & Zwitter, T. 1997, *A&A*, **318**, 269
- Nomoto, K., & Hashimoto, M. 1988, *PhR*, **163**, 13
- Pastorello, A., Kasliwal, M. M., Crockett, R. M., et al. 2008, *MNRAS*, **389**, 955
- Phillips, M. M., Simon, J. D., Morrell, N., et al. 2013, *ApJ*, **779**, 38
- Pritchard, T. A., Roming, P. W. A., Brown, P. J., Bayless, A. J., & Frey, L. H. 2014, *ApJ*, **787**, 157
- Roming, P. W. A., Pritchard, T. A., Brown, P. J., et al. 2009, *ApJL*, **704**, L118
- Schlafly, E. F., & Finkbeiner, D. P. 2011, *ApJ*, **737**, 103
- Smartt, S. J., Eldridge, J. J., Crockett, R. M., & Maund, J. R. 2009, *MNRAS*, **395**, 1409
- Taubenberger, S., Navasardyan, H., Maurer, J. I., et al. 2011, *MNRAS*, **413**, 2140
- Terry, J. N., Paturel, G., & Ekholm, T. 2002, *A&A*, **393**, 57
- Theureau, G., Hanski, M. O., Coudreau, N., Hallet, N., & Martin, J.-M. 2007, *A&A*, **465**, 71
- Tsvetkov, D. Y., Volkov, I. M., Baklanov, P., Blinnikov, S., & Tuchin, O. 2009, *PZ*, **29**, 2
- Tully, R. B. 1988, *Nearby Galaxy Catalog* (Cambridge: Cambridge Univ. Press)
- Turatto, M., Benetti, S., & Cappellaro, E. 2003, in *Proc. ESO/MPA/MPE Workshop, From Twilight to Highlight: The Physics of Supernovae*, ed. W. Hillebrandt & B. Leibundgut (Berlin: Springer), 200
- Van Dyk, S. D., Garnavich, P. M., Filippenko, A. V., et al. 2002, *PASP*, **114**, 1322
- Van Dyk, S. D., Li, W., Cenko, S. B., et al. 2011, *ApJL*, **741**, L28
- Van Dyk, S. D., Zheng, W., Fox, O. D., et al. 2014, *AJ*, **147**, 37
- Woosley, S. E., Eastman, R. G., Weaver, T. A., & Pinto, P. A. 1994, *ApJ*, **429**, 300