

Erratum to: Phenotypic variability and genetic differentiation in continental and island populations of *Colobanthus quitensis* (Caryophyllaceae: Antarctic pearlwort)

Marely Cuba-Díaz¹ · Macarena Klagges¹ · Eduardo Fuentes-Lillo^{1,2} · Cristian Cordero¹ · Daniela Acuña¹ · Génesis Opazo^{1,3} · José M. Troncoso-Castro⁴

Published online: 1 September 2017
© Springer-Verlag GmbH Germany 2017

Erratum to: Polar Biol DOI 10.1007/s00300-017-2152-x

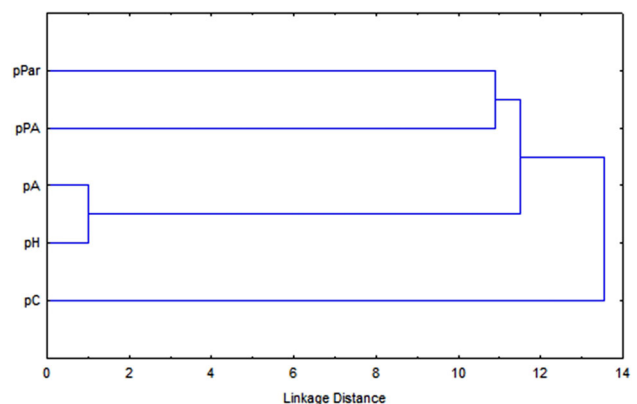
The authors regret an error in the published article (DOI: [10.1007/s00300-017-2152-x](https://doi.org/10.1007/s00300-017-2152-x)). The figures appear out of order:

The current Figure 2 should actually be Figure 4.
The current Figure 3 should actually be Figure 2.
The current Figure 4 should actually be Figure 3.
The current Figure 5 should actually be Figure 6.
The current Figure 6 should actually be Figure 5.
The figures corrected order is as follows:

The online version of the original article can be found under doi:[10.1007/s00300-017-2152-x](https://doi.org/10.1007/s00300-017-2152-x).

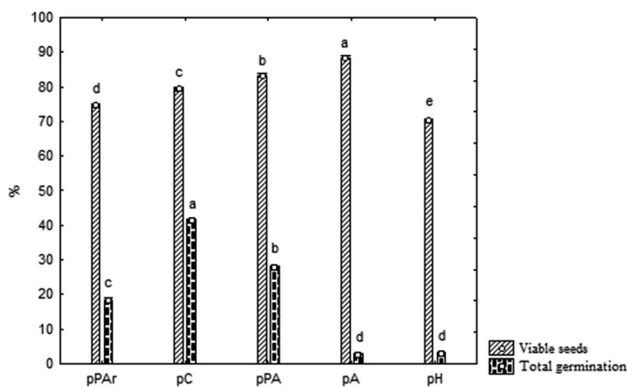
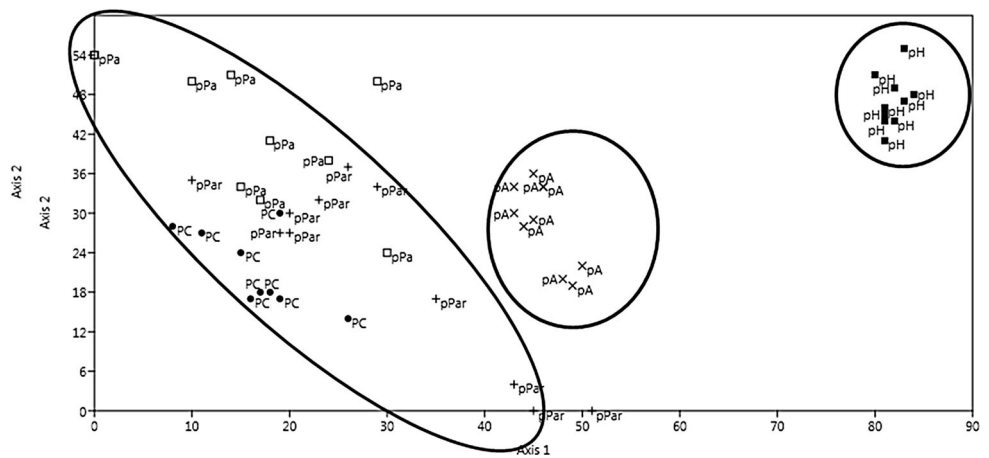
✉ Marely Cuba-Díaz
mcuba@udec.cl; mcubaster@gmail.com

- ¹ Laboratorio de Biotecnología y Estudios Ambientales. Escuela de Ciencias y Tecnología, Universidad de Concepción, Campus Los Ángeles. Casilla 341, Juan Antonio Coloma, 0201 Los Ángeles, Chile
- ² Laboratorio de Invasiones Biológicas. Facultad de Ciencias Forestales, Universidad de Concepción, Victoria 631, Barrio Universitario, Concepción, Chile
- ³ Laboratorio de Nanocelulosa y Biomateriales, Universidad de Chile, Beauchef 851, Piso 5, Santiago Centro, Chile
- ⁴ Laboratorio de Palinología y Ecología Vegetal, Escuela de Ciencias y Tecnología, Universidad de Concepción, Campus Los Ángeles. Casilla 341, Juan Antonio Coloma, 0201 Los Ángeles, Chile

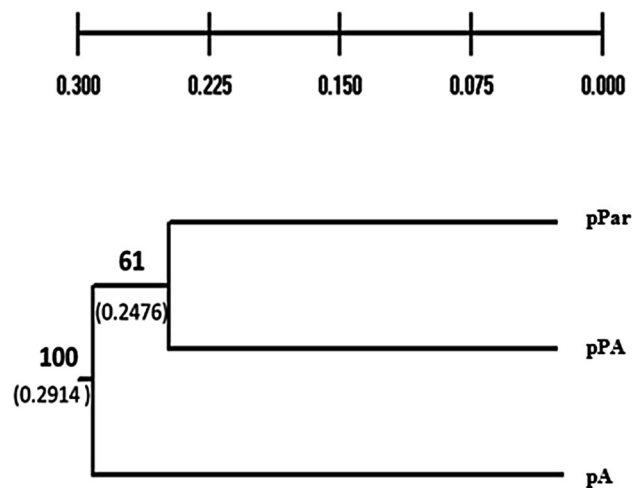


Correct Fig. 2 Complete linkage dendrogram showing the *Colobanthus quitensis* (Antarctic pearlwort) population grouping from Euclidean distances of morphological characteristics (For population names, see Table 1)

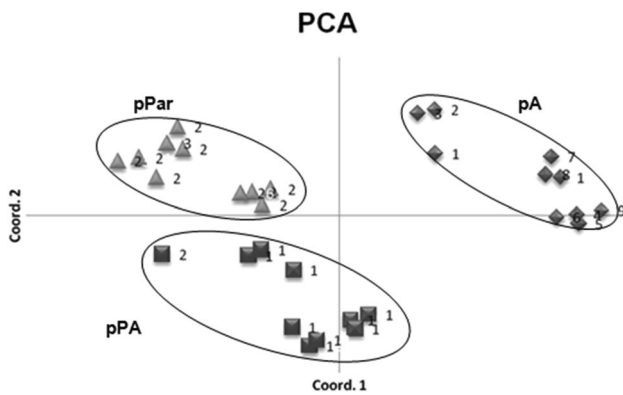
Correct Fig. 3 DCA plot based on the floral characteristics in the five study populations of *Colobanthus quitensis* (Antarctic pearlwort) (For population names, see Table 1)



Correct Fig. 4 Percentage of viable and germinating seeds in populations of *Colobanthus quitensis* (Antarctic pearlwort) (For population names, see Table 1)



Correct Fig. 6 Dendrogram constructed by means of a UPGMA analysis using Nei’s genetic distances (1972). In the upper part of each node is the “bootstrap” value that supports it and underneath in parentheses are the genetic distances



Correct Fig. 5 Principal components analysis (PCA) in populations of *Colobanthus quitensis* (Antarctic pearlwort) using 75 polymorphic loci detected with ISSR markers. Squares pPA (La Marisma). Triangles pPar (La Parva). Diamonds pA (Arctowski)