

Developmental effects on sleep/wake patterns in infants receiving a cow's milk-based infant formula with an added prebiotic blend: a Randomized Controlled Trial

Cite this article as: John Colombo, Susan E. Carlson, Cecilia Algarin, Sussanne Reyes, Maciej Chichlowski, Cheryl L. Harris, Jennifer L. Wampler, Patricio Peirano and Carol Lynn Berseth, Developmental effects on sleep/wake patterns in infants receiving a cow's milk-based infant formula with an added prebiotic blend: a Randomized Controlled Trial, *Pediatric Research* doi:10.1038/s41390-020-1044-x

This Author Accepted Manuscript is a PDF file of an unedited peer-reviewed manuscript that has been accepted for publication but has not been copyedited or corrected. The official version of record that is published in the journal is kept up to date and so may therefore differ from this version.

□ This article is licensed under a Creative Commons Attribution 4.0 International License, which permits use, sharing, adaptation, distribution and reproduction in any medium or format, as long as you give appropriate credit to the original author(s) and the source, provide a link to the Creative Commons license, and indicate if changes were made. The images or other third party material in this article are included in the article's Creative Commons license, unless indicated otherwise in a credit line to the material. If material is not included in the article's Creative Commons license and your intended use is not permitted by statutory regulation or exceeds the permitted use, you will need to obtain permission directly from the copyright holder. To view a copy of this license, visit <http://creativecommons.org/licenses/by/4.0/>.

Terms of use and reuse: academic research for non-commercial purposes, see here for full terms. <https://www.nature.com/authors/policies/license.html#AAMtermsV1>

Developmental effects on sleep/wake patterns in infants receiving a cow's milk-based infant formula with an added prebiotic blend: a Randomized Controlled Trial

John Colombo^{1*}, Susan E. Carlson², Cecilia Algarin³, Sussanne Reyes³, Maciej Chichlowski⁴, Cheryl L. Harris⁵, Jennifer L. Wampler⁵, Patricio Peirano³, Carol Lynn Berseth⁵

Authors' contributions: CLB, JC, and SC conceived of and designed the study. PP, CA, and SR processed actigraphy data to assess sleep/wake patterns and conducted substantial statistical analysis. CLH contributed to study design and performed statistical analyses. JLW contributed to study design and drafted the first draft of the manuscript. MC contributed to study design and stool microbiome analysis. All authors interpreted data, contributed to manuscripts drafts, reviewed and revised the manuscript for critical intellectual content, and approved the final version to be published.

Affiliations:

¹Schiefelbusch Institute for Life Span Studies and Department of Psychology, University of Kansas, Lawrence, KS

²Department of Dietetics and Nutrition, University of Kansas Medical Center, Kansas City, KS

³Sleep and Functional Neurobiology Laboratory, Institute of Nutrition and Food Technology (INTA), University of Chile, Santiago, Chile

⁴Nutrition Science, Department of Medical Affairs, Mead Johnson Nutrition, 2400 West Lloyd Expy, Evansville, IN 47721

⁵Clinical Research, Department of Medical Affairs, Mead Johnson Nutrition, 2400 West Lloyd Expy, Evansville, IN 47721

***Correspondence to:** Dr. John Colombo, Life Span Institute and Department of Psychology, University of Kansas, Lawrence, KS, USA; e-mail: colombo@ku.edu; phone: (785) 864-0569

Statement of financial support: The study was funded by the study sponsor, Mead Johnson Nutrition (MJN; Evansville, IN)

Disclosure Statement for all authors: Drs. Colombo and Carlson's institutions were provided funding by Mead Johnson Nutrition in order to independently enroll infants and coordinate the study. Drs. Peirano, Algarin, and Reyes' institution was provided funding to provide expertise regarding actigraph analysis. Dr. Colombo was provided travel funds to present some of the data. Drs. Chichlowski and Wampler and Ms. Harris are currently employed by Mead Johnson Nutrition. Dr. Berseth was previously employed by Mead Johnson Nutrition and is currently employed in Medical and Scientific Affairs at Brightseed (San Francisco, USA).

Study Consent: Parents or guardians provided written informed consent prior to enrollment.

Clinical Research Impact:

- Few studies have evaluated nutritive effects of prebiotics on infant behavior state, cortisol awakening response (CAR), sleep-wake entrainment, and gut microbiome.
- Faster consolidation of daytime waking state was demonstrated in infants receiving a prebiotic blend in infant formula through ~4 months of age.
- Shorter episodes of crying were demonstrated at ~2 months of age (time point corresponding to age/developmental range associated with peak crying) in infants receiving formula with added prebiotics.
- Results support home-based actigraphy as a suitable method to assess early sleep/wake patterns.
- Prebiotic effect on wake organization is consistent with influence on the gut-brain axis and warrants further investigation.

ABSTRACT

BACKGROUND: Few studies have evaluated nutritive effects of prebiotics on infant behavior state, physiology, or metabolic status.

METHOD: In this double-blind randomized study, infants (n=161) received: cow's milk-based infant formula (Control) or similar formula with an added prebiotic blend (polydextrose and galactooligosaccharides; [PDX/GOS]) from 14-35 to 112 days of age. Infant wake behavior (crying/fussing, awake/content) and 24h sleep-wake actograms were analyzed (Baseline, Days 70 and 112). Salivary cortisol was immunoassayed (Days 70 and 112). In a subset, exploratory stool 16S rRNA sequencing was analyzed (Baseline, Day 112).

RESULTS: 131 infants completed the study. Average duration of crying/fussing episodes were similar at Baseline, significantly shorter for PDX/GOS vs Control at Day 70, and the trajectory continued at Day 112. Latency to first and second nap was significantly longer for PDX/GOS vs Control at Day 112. Cortisol awakening response (CAR) was demonstrated at Days 70 and 112. Significant stool microbiome beta-diversity and individual taxa abundance differences were observed in the PDX/GOS group.

CONCLUSIONS: Results indicate faster consolidation of daytime waking state in infants receiving prebiotics and support home-based actigraphy to assess early sleep/wake patterns. A prebiotic effect on wake organization is consistent with influence on the gut-brain axis and warrants further investigation.

INTRODUCTION

Infant state regulation, reflecting responsivity to everyday environmental stimuli, matures and consolidates with age. A predominant example is crying, considered a universal form of early communication, which promotes parental/caregiver proximity and enhances chances of survival (1). The daily time spent crying and fussing in infants typically increases from birth, peaks around 6-8 weeks of age, and subsequently decreases with age (2). Other important characteristics of behavioral development include sleep pattern consolidation and response to stress, both maturing rapidly during infancy. Infant sleep/wake patterns undergo progressive nocturnal sleep consolidation and maturation of wake rhythm during the first six months of age. Whereas newborn infant sleeps 16 to 17 hours per day, by six months the amount drops to 13 to 14 hours with the longest sleep period extending to six hours (3). Sufficient non-REM sleep (4), along with proper nutrition (5), can impact brain development. Changes in percentages of waking and sleeping states, each also corresponding to a specific brain functional state, occur with advancing age; for example, active sleep (the precursor of REM sleep) decreases, quiet sleep (non-REM sleep) increases, and indeterminate sleep decreases throughout the first six months and disappears in a short time (6).

Cortisol, a hormone involved in regulation of circadian-driven activities (7), may also be linked to sleep quality and stress management. Relation of cortisol secretion to sleep duration, feeding time, and maternal cortisol at birth is still controversial (8); however, a diurnal pattern in parallel with day/night rhythm develops from three to six months of age (9). The cortisol awakening response (CAR) is characterized as: cortisol levels reach a nadir by late evening (typically at waking/sleep transition and sleep onset); begin to increase by midnight; and finally

peak approximately 30 minutes after awakening. CAR emerges from 2 to 6 months of age and can be assessed using salivary cortisol measures (10, 11).

Bi-directional communication linking the brain and gut function, known as the gut-brain axis, has prompted interest in examining the impact of nutrition and gut microbiome composition on behavior, brain development, learning, and cognition. Prebiotics are dietary components that have been defined as: “a substrate that is selectively utilized by host microorganisms conferring a health benefit” (12). In healthy term infants, we have previously demonstrated a prebiotic blend of polydextrose (PDX) and galactooligosaccharides (GOS) (4g/L, 1:1 ratio) in infant formula was well-tolerated, supported normal growth, promoted softer stools closer to that of breastfed infants, and had a bifidogenic effect closer to breast milk when compared to infants fed a formula without the added prebiotic blend (13-17). This same blend of PDX and GOS has also been associated with development of typical behavioral states in preterm infants who demonstrated a significant reduction in excessive crying (18). These data are consistent with the hypothesis that prebiotics may have an impact on broader brain-mediated behaviors.

Preclinical data using a rodent sleep model has recently demonstrated effects of dietary prebiotics on sleep physiology. Beneficial REM sleep rebounded more quickly and reductions in disruption of the diurnal rhythm of core body temperature and dysbiosis (using three measures of alpha diversity) were demonstrated in a feeding group randomized to receive the dietary blend of PDX and GOS (19). Data from the same study further linked sleep physiology and gut metabolites, including secondary bile acids (e.g. hyodeoxycholic acid) and known neuroactive gut metabolites (20). Overall, the study diet that had the blend of PDX and GOS was demonstrated to modulate stress and sleep in the preclinical model. To date, no studies have evaluated the nutritive effects, safety, and tolerance of prebiotics on typical infant behavioral

regulation. Consequently, the objective of this study was to evaluate sleep measures and infant state in infants randomized to receive: cow's milk-based infant formula with or without an added prebiotic blend of PDX and GOS (4 g/L, 1:1 ratio) through approximately 4 months of age.

Author accepted manuscript

METHODS

Study Design and Participants

In this multicenter, double-blind, randomized, controlled, parallel-group, prospective trial (ClinicalTrials.gov: <https://clinicaltrials.gov/ct2/show/NCT02118935>), healthy 14- to 35-day old infants were recruited at 9 clinical sites in the United States. This study was designed to assess behavior using a parental diary to measure infant state, home-based actigraphy to assess sleep-wake patterns, and CAR. In a limited subset of participants the association between early life microbiome and the PDX and GOS blend was also examined. Participants were enrolled between July 2014 and November 2015. Parents or guardians provided written informed consent prior to enrollment. The research protocol and informed consent forms observing the Declaration of Helsinki (including October 1996 amendment) were approved by The University of Kansas Medical Center - Human Research Protection Program (Kansas City, KS, USA) and Shulman IRB (now known as Advarra, Columbia, MD). The study complied with good clinical practices.

Eligible infants were singleton births at 37-42 weeks gestational age with birth weight ≥ 2500 g and had a history of normal growth. Mothers had chosen to primarily feed infant formula prior to study enrollment. Eligible infants received $\geq 75\%$ of the recommended caloric intake from marketed infant formula over the 24 hours prior to randomization to study formula. Exclusion criteria included maternal history of prenatal illicit drug use or clinically significant psychiatric disease; infant history of underlying metabolic or chronic disease or congenital malformation likely to interfere with the ability to ingest food, normal growth, and development, or participant evaluation; feeding difficulties or history of formula intolerance; evidence of or concerns for growth difficulties; immunodeficiency; and planned use of probiotics during the study period.

Randomization and Study Group Allocation

The study sponsor created a computer-generated, sex-stratified randomization schedule provided in sealed consecutively numbered envelopes for each study site. Study formula was assigned by opening the next sequential envelope from the appropriate set at the study site. Study formulas, each designated by two unique codes known only to the sponsor, were dispensed to parents at each study visit prior to completion or withdrawal. Neither the product labels nor the sealed envelopes allowed direct unblinding by the study site. Personnel responsible for monitoring the study were also blinded to study product identification. Blinding for a participant could be broken by study sponsor personnel in the event of a medical emergency in which knowledge of the study formula was critical to the participant's management. In this study, it was not necessary to break the study code prematurely. Participants were randomly assigned to receive one of two study formulas (Mead Johnson Nutrition, Evansville, IN): 1) a routine cow-milk based infant formula that had a prebiotic blend of PDX (Litesse[®] Two Polydextrose; Danisco) and GOS (Vivinal[®] GOS Galactooligosaccharide; Friesland Foods Domo) (4 g/L, 1:1 ratio; marketed Enfamil[®]; PDX/GOS) or 2) a similar formula that had no added prebiotic blend (Control; previously marketed Enfamil) from study randomization up to 112 days of age. Study formulas were provided as ready-to-use (RTU) liquids (20 cal/fluid ounce) and had docosahexaenoic acid (DHA) at 17 mg/100 kcal and arachidonic acid (ARA) at 34 mg/100 kcal.

Study Outcomes

Study visits corresponded to Baseline (14-35 days of age), randomization to study formula (4-8 days following Baseline), Day 70 (± 7 days), and Day 112 (± 7 days). At the randomization visit, inclusion/exclusion criteria were verified. Baseline diary and actigraphy data were received, and participants were assigned to a study formula group. The primary outcome in this pilot study was assessment of the nutritive effects of a prebiotic-containing infant formula on infant behavioral

state and sleep-wake patterns using a validated parent-reported diary and sleep actigraphy at Baseline, Day 70, and Day 112 as the primary variables to assess early behavioral indicators of tolerance. If an infant was sick at the time of a scheduled assessment, the evaluation was postponed until he/she recovered. Secondary outcomes included achieved anthropometrics (body weight, length, and head circumference) and a 24-h parent recall of stool characteristics (frequency/day and consistency scaled from 1 to 5: hard, formed, soft, unformed or seedy, watery), gassiness, and fussiness recorded at all study time points. A 24-hr recall of formula intake (fluid oz/day) was collected at Days 70 and 112. Cortisol Awakening Response (CAR) was also reported at Days 70 and 112. Adverse events were collected throughout the study period and coded according to specific event (e.g. otitis media, colic, etc.) and the body system involved.

Infant behavior diary

Parents/caregivers reported “crying/fussing” and “awake and content” behavior using a validated paper diary (21-23) over a consecutive 72h period to evaluate infant state. Diary recordings were completed at Baseline (recording began the day after that study visit), Day 70 (between 60-77 days of age), and Day 112 (between 102-119 days of age). Each 24-h period was represented by four 6-h time bars (5 min subdivisions) corresponding to: morning (6:00 a.m. to noon), afternoon (noon to 6:00 p.m.), evening (6:00 p.m. to midnight), and night (midnight to 6:00 a.m.) (See Supplemental Figure). Crying/fussing and awake/content behaviors were recorded in 5-min increments with parents encouraged to fill in the diary every 2 to 3 hours, or at the same time as a repetitive activity, such as feeding or changing a diaper. Behaviors recorded as “other” (e.g., sleeping, eating, cannot recall) were not analyzed.

Actigraphy

Infants wore waterproof actigraph devices (Actiwatch 2, Philips Respironics, Bend, OR, USA) without removal (on leg or ankle) for a minimum of 3 consecutive days to continuously record periods of movement and rest. Actigraphy recordings occurred at Baseline (recording began the evening of that study visit), Day 70 (between 59-77 days of age), and Day 112 (between 101-119 days of age). Motor activity was not collected when a participant was sick/ill. Each 24h interval was divided into nocturnal and diurnal periods. The nocturnal period began with the onset of the first sleep episode after 20:00 h that was followed for at least 30 consecutive minutes of sustained sleep; this period ended with the transition to the diurnal period, which started when the first wake episode appeared after 06:00 h and was followed for at least 30 consecutive minutes of wakefulness. Actigraphic data was digitalized, stored for each successive 1-min interval, and processed on a min-by-min basis to produce individual actograms for each participant (Actiware, Philips Respironics). Typically the manufacturer's software automatically determines the start of a sleep or wake epoch using a pre-set algorithm. Actigraphy has demonstrated good sensitivity (ability to detect sleep) but poor-to-fair specificity (ability to detect wake after sleep onset) (24). Therefore to avoid inaccurate detection of short sleep and wake episodes, often the primary source of errors using actigraphic recordings at different ages (25), we reassessed this first detection of sleep-wake episodes for each individual actogram as described previously (26). Briefly, shorter changes within sleep or wake episodes lasting at least 8 min were incorporated in the ongoing episode to generate a new sequence. For example, the sequence SSSSSSSWWSWSSSS (S=sleep, W=wake) based on 1-min length would become SSSSSSSSSSSSSSS. Sleep/wake variables for the whole 24-h period were total wake and sleep times. For nocturnal and diurnal periods these variables include: wake-up and sleep onset times, total duration of time spent awake, mean duration and number of wake episodes, total duration of

time spent asleep, mean duration and number of sleep episodes, latency to and duration of first nap, latency to second nap, latency to first wake episode, longest sleep episode duration during the first and second half of the night, and onset time of the longest sleep episode during the second half of the night.

Salivary Cortisol

Participant saliva samples were collected at home within 48-h prior to Day 70 and 112 study visits directly upon first natural waking and 30 minutes post waking. Pooled saliva in the participant's cheek or under the tongue (~1 mL/sample) was collected using a validated infant swab and tube system (SalivaBio Infant's Swab, Salimetrics, Carlsbad, CA). Parents were instructed that the infant should have no feedings until after the second sampling. Sample tubes were refrigerated within 30 minutes of collection, kept frozen at or below -20°C (within 4 hours of collection), and salivary cortisol ($\mu\text{g/dL}$) was analyzed by enzyme immunoassay as described previously (Salimetrics, State College, PA).

Stool collection and microbiome analysis

In a subset of participants, a stool sample was received at the randomization visit and at Day 112. DNA isolation, enrichment, and sequencing were performed (Second Genome, South San Francisco, CA), PCR products were sequenced (Illumina MiSeq) and QIIME operational taxonomic units (OTUs) were assigned as previously described (27).

Statistical analysis

A sample size of 50 completed participants per feeding group was estimated to allow detection of an effect size of 0.57 ($\alpha=0.05$, two-tailed test, 80% power). 24-h sleep-wake variables were averaged from collected motor activity data and analyzed by repeated measures ANOVA.

Infant state variables (durations and frequencies averaged within time points); achieved weight, length, and head circumference; and formula intake were analyzed by mixed models for repeated measures. Salivary cortisol was analyzed using paired t-tests. Stool frequency was analyzed by ANOVA. Stool consistency was analyzed using the Cochran-Mantel-Haenszel test. Fussiness and gas were analyzed using the χ^2 test. Study discontinuations and the incidence of adverse events were analyzed using Fisher's exact test. For exploratory microbiome analysis, alpha (OTU richness and Shannon) and beta diversity (Bray-Curtis) measures were analyzed by study group and time point. Taxa associated with study groups were determined.

Author accepted manuscript

RESULTS

Participants

A total of 161 participants were enrolled and randomized (Control: n=82; PDX/GOS: n=79) (Figure 1). At study enrollment, anthropometric measures, age, and gender distribution were similar among groups (Table 1). No statistically significant group differences were detected for study discontinuation (Control: n=16, 20%; PDX/GOS: n=14, 18%) or discontinuation related to study formula (Control: n=2, 2%; PDX/GOS: n=6, 8%). Of the 8 participants with discontinuation related to study formula, a study investigator elected to discontinue 1 participant and 7 (4% of the total study population) were discontinued by a study investigator due to formula intolerance. The most common symptoms of formula intolerance were gas (Control: n=1; PDX/GOS: n=4), fussiness (PDX/GOS, n=4), and emesis (PDX/GOS, n=4). A total of 131 infants completed the study (Control: n=66; PDX/GOS: n=65).

Infant State

Waking behavior characterized as “awake and content” is shown in Figure 2. Total diurnal or total nocturnal duration (Fig 2A) was approximately 50 min for each group at Baseline but diverged over time for both groups ($P<0.001$). Total nocturnal duration remained steady through Day 112 whereas total diurnal duration significantly increased through Days 70 and 112 (both group means were ~70-80 min). The frequency (Fig 2B) of awake and content episodes was significantly higher during the diurnal vs nocturnal period ($P<0.001$). Nocturnal frequency decreased from Baseline to Day 112 (group means decreased from approximately 5 to 3) whereas diurnal frequency increased from Baseline to Day 112 (group means increased from approximately 13 to 17). Average duration of episodes (Fig 2C) was significantly longer for nocturnal vs diurnal at all study timepoints ($P<0.001$). Whereas average diurnal episodes

remained unchanged (group means approximately 5 min), average nocturnal episodes significantly increased from Baseline to Day 112 ($P=0.018$).

Waking behavior characterized as “crying/fussing” is shown in Figure 3. Total duration of crying/fussing (Fig 3A) significantly decreased from Baseline to Day 112 ($P=0.033$). Frequency of episodes (Fig 3B) also significantly decreased by study end ($P<0.001$). Frequency of nocturnal compared to diurnal episodes was lower from Baseline to Day 112 ($P<0.001$). From Baseline to Day 112, average duration of episodes (Fig 3C) was significantly longer for nocturnal vs diurnal ($P<0.001$) and increased with age ($P<0.001$). A significant study group*time point interaction ($P=0.042$) was explored by further analysis at each study time point: average duration of crying/fussing episodes were similar at Baseline, significantly shorter for the PDX/GOS compared to Control at Day 70 ($P=0.017$) and continued the same trajectory at Day 112 ($P=0.089$).

Sleep-Wake Patterns

Diurnal, nocturnal, and 24-h sleep/wake variables by study time point and by group (mean \pm SE) are presented in Table 2. For diurnal napping, the number and duration of nap episodes was similar between groups. The duration of 1st nap was also similar between groups; however, latency to 1st nap began to diverge at Day 70 and was significantly longer in the PDX/GOS vs Control group by Day 112 (2.7 ± 0.1 vs 2.2 ± 0.1 ; $P=0.023$). Subsequent latency to 2nd nap since wake onset was significantly longer in the PDX/GOS vs Control group at Day 112 ($P=0.028$). For nocturnal waking, latency to 1st wake episode was significantly longer in the PDX/GOS vs Control group at Baseline ($P=0.034$) and Day 70 ($P=0.014$) although the number and duration of episodes was similar between groups. A significant difference in total nocturnal sleep time was detected at Day 112 (Control: 7.3 ± 0.1 , PDX/GOS 6.8 ± 0.1 ; $P=0.033$) although no group

differences were detected in mean duration of sleep episodes or duration of the longest sleep episode during the 1st half of the night. During the 2nd half of the night, the longest sleep episode duration was significantly longer at Day 70 (1.6 ± 0.1 vs 1.3 ± 0.1 ; $P=0.034$) and the onset time (h:min \pm min) of the episode was significantly earlier by Day 112 ($4:00 \pm 7$ vs $4:23 \pm 7$; $P=0.014$) in the PDX/GOS vs Control group. For other common sleep/wake variables, with the exception of total wake time at Day 70 (Control: 14.2 ± 0.2 , PDX/GOS 13.6 ± 0.2 ; $P=0.027$), no group differences were detected at any study time point for: 24-h total wake or sleep time, total diurnal wake time; or total diurnal nap time.

Cortisol Awakening Response (CAR)

The presence of CAR was demonstrated at Days 70 and 112 (Table 3) and was unrelated to sex, study time point, or study feeding group. Salivary cortisol ($\mu\text{g/dL}$, mean \pm SE) significantly increased from first awakening to 30 min post-wakening for both study groups at Days 70 and 112 ($P \leq 0.001$).

Growth and Tolerance

No significant group differences were observed for mean achieved weight, length, or head circumference throughout the study (data not shown). At enrollment, parent-reported gassiness and fussiness (data not shown) and stool characteristics were similar between groups (Table 4). No significant group differences in gassiness, fussiness, or study formula intake were detected at Days 70 and 112. No significant differences in mean (\pm SE) stool frequency (number/day) or stool consistency was detected in the Control versus PDX/GOS group at any measured study time point. In stool consistency categories, soft or unformed or seedy were most commonly reported for participants in both study groups.

The number of participants for whom at least one medically confirmed adverse event was reported was significantly different between groups (Control: n=45, 55%; PDX/GOS: n=58, 73%; $P=0.021$). The incidence of adverse events categorized within Cardiovascular; Eyes, Ear, Nose and Throat; Metabolic and Nutrition; Musculoskeletal; Nervous System; Respiratory; Skin; or Urogenital systems were generally low with no statistically significant group differences for specific events. Within Body As A Whole, the overall incidence was significantly lower in the Control (n=5, 6%) versus the PDX/GOS group (13, 16%; $P=0.046$), however there were no significant differences between specific types of adverse events within this category. Within the GI System the overall incidence was also significantly lower in the Control (n=16, 20%) versus the PDX/GOS group (29, 37%; $P=0.022$). The most commonly reported specific adverse events were gastroesophageal (GE) reflux, gas, and constipation. There were no group differences in the incidence of GE reflux or gas, however the incidence of constipation was significantly lower in the Control (n=1, 1%) versus the PDX/GOS group (7, 9%; $P=0.032$). Also within the GI System category, the incidence of diarrhea was low but significantly different between groups (Control: 0, 0%; PDX/GOS: 5, 6%; $P=0.027$). Any medically confirmed adverse event was considered serious if it met one or more of the following criteria: resulted in death, was life-threatening, required inpatient hospitalization or prolongation of existing hospitalization, resulted in persistent or significant disability/incapacity, or was a congenital anomaly/birth defect. A total of 3 participants experienced serious adverse events (Control: n=2, 2%; PDX/GOS: n=1, 1%). All serious adverse events were individually evaluated by the study site physicians and each was determined to be unrelated to study formulas.

Effects of diet on stool microbiome

Stool samples at Baseline and Day 112 were analyzed in a subset of participants (Control, n=5; PDX/GOS, n=6). From Baseline to Day 112, no significant differences in OTU richness (sum of unique OTUs) or Shannon Index (the number of OTUs in a sample relative to OTU abundance) and were detected in either study group (Figures 4 and 5). No significant differences in beta diversity (Bray-Curtis distance, a measure of between-sample microbial community composition), from Baseline to Day 112 were detected by PERMANOVA analysis for the Control group. However, a significant shift in beta diversity between Baseline and Day 112 was detected for the PDX/GOS group (PERMANOVA $P=0.001$). For the PDX/GOS group, the relative abundance of bacterial family Lachnospiraceae was significantly higher at Baseline compared to Day 112 ($P=0.036$). For the Control vs PDX/GOS group, by Day 112 the relative abundance of bacterial family Coriobacteriaceae was significantly higher ($P=0.02$). A numerical increase in the genus *Bifidobacterium*, in which *Bifidobacterium* spp. became a dominant genus by Day 112, was observed for the PDX/GOS group (Baseline vs. Day 112: mean percent relative abundance [standard deviation, SD] was 39.6 [20.7] and 57.7 [15.9], respectively). No statistically significant group differences were detected at the phylum level.

Discussion

To the best of our knowledge, no previous studies have assessed the influence of prebiotics on development of human sleep/wake patterns. Results in the current study indicate faster consolidation of daytime waking state in infants receiving a prebiotic blend of PDX and GOS. Age-related behavioral maturation from Baseline to Day 112 was demonstrated for waking behavior. Shorter episodes of crying were also demonstrated by Day 70—a time point corresponding to the same age and developmental range typically associated with peak crying at ~two months of age. The presence of CAR was demonstrated in all study participants.

Sleep is a time of intense brain activity in which onset and maintenance requires inhibition of the underpinning mechanisms controlling the waking state (and vice versa for the waking state). Given this reciprocal inhibition/activation process, sleep/wake patterns offer a window into the developing brain (28). Over the first year of life, the percentage of active sleep (the precursor of REM sleep) decreases and quiet sleep (non-REM sleep) increases. Results in the current study indicate faster consolidation of the sleep-wake cycle in infants receiving prebiotics. By Day 112, mean latency to the first and second diurnal nap onset was longer in the PDX/GOS group. Given that no group differences were detected for duration of first nap, results suggest earlier wake consolidation in the PDX/GOS group and more organized diurnal nap pattern. Differences in sleep/wake state changes with advancing age and between the diurnal and nocturnal periods, including both amount and time distribution, have been previously demonstrated (29-31).

Infant temperament and psychomotor development has been inconsistently linked with sleep pattern development (6, 32, 33). This inconsistency may be due, in part, to the reliance upon sleep diaries rather than direct measures. Although accurate sleep/wake patterns data can be

acquired through polysomnography (gold standard) in an academic sleep laboratory, recordings are expensive, very time-consuming, and modify the family's usual routine. Infant sleep patterns can be evaluated through daily actigraph recordings, which are more precise than parent-report (34, 35) and usually close with polysomnography conducted under clinical supervision in a sleep laboratory (36). Ambulatory actimetry instruments sensitive to movement, typically worn on the wrist or ankle that records activity over time (actigraphy) have been previously used in young infants for extended periods of time with good parental and infant compliance and accurate readings (37, 38). The current study provides further support for use of home-based actigraphy to accurately assess sleep/wake patterns throughout the first months of life.

The presence of CAR and relationship with sleep has been evaluated previously in children at 12, 18, and 24 months of age (39). Although higher waking cortisol was associated with earlier awakening and shorter total sleep time, there were no significant differences in total sleep time, wake after sleep onset, number of awakenings, average length of awakening, efficiency, or awakening time between infants with or without the presence of CAR. By assessing nighttime along with daytime sleep/wake patterns, wake-time and daytime napping have been demonstrated to induce modifications of CAR (40, 41). Previous studies have suggested emergence of CAR varies by individual and can appear from 2 to 6 months of age (10, 11). Current study results confirm the presence of CAR by ~2 months of age.

In the present study, we assessed potential nutritive effects of specific dietary components (prebiotics) early in life on sleep/wake patterns in infants. Preliminary results, assessing stool samples in a subset of participants, have suggested that prebiotics in infant formula started early in life could support the healthy gut microbiome and positively affect sleep pattern development. Microbiome diversity is an amount of variation of microbial community within a sample (alpha-

diversity), or between samples (beta-diversity). No significant group differences in alpha diversity measures were demonstrated, suggesting that richness or evenness within individual participant samples were not impacted. In the PDX/GOS group, the numerical increase in the genus *Bifidobacterium* agrees with previous studies demonstrating PDX and GOS in infant formulas has a bifidogenic effect (17) and the significant increase of family *Lachnospiraceae* may have potentially contributed to the observed beneficial effects, since this bacterial family includes butyrate-producing bacteria (42). Also, the family *Coriobacteriaceae* (demonstrated to increase significantly in the ceca of mice in response to stress) was not impacted in infants receiving the prebiotic blend but was significantly increased in the Control group. Overall, the effect of prebiotics on wake organization is consistent with an influence on the gut-brain axis and requires further study with larger numbers of samples.

This study is limited by the lack of data regarding bedtime and nighttime parental practices, such as bedtime interactions, soothing routines, and socio-cultural context, to further define the role of these routines on the establishment of sleep/wake patterns and cortisol levels. In addition, some aspects of infant behavior study outcomes relied on parent-reported measures (Barr Diary). Another limitation is measurement of cortisol, as an end-product of a neuroendocrine system, compared to measuring a precursor such as adrenocorticotropin, which could help understand potential mechanisms underlying CAR (e.g., hypothalamic or adrenal).

CONCLUSION

Shorter episodes of crying were demonstrated by Day 70 in infants receiving formula with prebiotics, a time point corresponding to the same age and developmental range typically associated with peak crying. Results indicate faster consolidation of daytime waking state in infants receiving prebiotics and provide further support for home-based actigraphy to assess sleep/wake patterns throughout the first months of life. Results also suggest improved behavioral indicators of tolerance in infants receiving a prebiotic blend and further support the need to assess the connection of nutrition and infant state throughout the first months of life. The effect of prebiotics on infant state is consistent with an influence on the gut-brain axis and requires further study.

Author accepted manuscript

References

1. Barr RG, Gunnar MR 2000 Colic: the “transient responsivity” hypothesis. In Barr RG, Hopkins B, Green JA (eds) *Crying as a Sign, a Symptom, and a Signal: Clinical, Emotional and Developmental Aspects of Infant and Toddler Crying*. Cambridge University Press, p 228.
2. James-Roberts IS, Halil T 1991 Infant Crying Patterns in the First Year: Normal Community and Clinical Findings. *Journal of Child Psychology and Psychiatry* 32:951-968.
3. Coons S, Guilleminault C 1982 Development of sleep-wake patterns and non-rapid eye movement sleep stages during the first six months of life in normal infants. *Pediatrics* 69:793-798.
4. Novelli L, Ferri R, Bruni O 2013 Sleep cyclic alternating pattern and cognition in children: a review. *Int J Psychophysiol* 89:246-251.
5. Aboud FE, Yousafzai AK 2015 Global health and development in early childhood. *Annual review of psychology* 66:433-457.
6. Ednick M, et al. 2009 A review of the effects of sleep during the first year of life on cognitive, psychomotor, and temperament development. *Sleep* 32:1449-1458.
7. Watamura SE, Donzella B, Kertes DA, Gunnar MR 2004 Developmental changes in baseline cortisol activity in early childhood: relations with napping and effortful control. *Dev Psychobiol* 45:125-133.
8. Beijers R, Riksen-Walraven JM, de Weerth C 2013 Cortisol regulation in 12-month-old human infants: Associations with the infants' early history of breastfeeding and co-sleeping. *Stress* 16:267-277.

9. de Weerth C, Zijl RH, Buitelaar JK 2003 Development of cortisol circadian rhythm in infancy. *Early Hum Dev* 73:39-52.
10. Stalder T, et al. 2013 The cortisol awakening response in infants: ontogeny and associations with development-related variables. *Psychoneuroendocrinology* 38:552-559.
11. Tegethoff M, Knierzinger N, Meyer AH, Meinlschmidt G 2013 Cortisol awakening response in infants during the first six postnatal months and its relation to birth outcome. *Psychoneuroendocrinology* 38:629-637.
12. Gibson GR, et al. 2017 Expert consensus document: The International Scientific Association for Probiotics and Prebiotics (ISAPP) consensus statement on the definition and scope of prebiotics. *Nat Rev Gastroenterol Hepatol* 14:491-502.
13. Ziegler E, et al. 2007 Term infants fed formula supplemented with selected blends of prebiotics grow normally and have soft stools similar to those reported for breast-fed infants. *J Pediatr Gastroenterol Nutr* 44:359-364.
14. Ashley C, et al. 2012 Growth and tolerance of infants fed formula supplemented with polydextrose (PDX) and/or galactooligosaccharides (GOS): double-blind, randomized, controlled trial. *Nutr J* 11:38.
15. Johnston WH, et al. 2015 Growth and tolerance of formula with lactoferrin in infants through one year of age: double-blind, randomized, controlled trial. *BMC Pediatr* 15:173.
16. Nakamura N, et al. 2009 Molecular ecological analysis of fecal bacterial populations from term infants fed formula supplemented with selected blends of prebiotics. *Appl Environ Microbiol* 75:1121-1128.
17. Scalabrin DM, et al. 2012 New prebiotic blend of polydextrose and galacto-oligosaccharides has a bifidogenic effect in young infants. *J Pediatr Gastroenterol Nutr* 54:343-352.

18. Partty A, et al. 2013 Effects of early prebiotic and probiotic supplementation on development of gut microbiota and fussing and crying in preterm infants: a randomized, double-blind, placebo-controlled trial. *J Pediatr* 163:1272-1277 e1271-1272.
19. Thompson RS, et al. 2017 Dietary prebiotics and bioactive milk fractions improve NREM sleep, enhance REM sleep rebound and attenuate the stress-induced decrease in diurnal temperature and gut microbial alpha diversity. *Front Behav Neurosci* 10.
20. Thompson RS, et al. 2020 Dietary prebiotics alter novel microbial dependent fecal metabolites that improve sleep. *Sci Rep* 10:3848-3848.
21. Barr RG, et al. 1988 Parental diary of infant cry and fuss behaviour. *Arch Dis Child* 63:380-387.
22. Barr RG, et al. 1989 Feeding and Temperament as Determinants of Early Infant Crying/Fussing Behavior. *Pediatrics* 84:514-521.
23. Hunziker UA, Barr RG 1986 Increased Carrying Reduces Infant Crying: A Randomized Controlled Trial. *Pediatrics* 77:641-648.
24. Galland BC, et al. 2018 Establishing normal values for pediatric nighttime sleep measured by actigraphy: a systematic review and meta-analysis. *Sleep* 41.
25. Meltzer LJ, Walsh CM, Traylor J, Westin AM 2012 Direct comparison of two new actigraphs and polysomnography in children and adolescents. *Sleep* 35:159-166.
26. Reyes S, Algarin C, Bunout D, Peirano P 2013 Sleep/wake patterns and physical performance in older adults. *Aging Clin Exp Res* 25:175-181.
27. Jacobi SK, et al. 2015 Dietary Isomers of Sialyllactose Increase Ganglioside Sialic Acid Concentrations in the Corpus Callosum and Cerebellum and Modulate the Colonic Microbiota of Formula-Fed Piglets. *J Nutr* 146:200-208.

28. Kohyama J 1998 Sleep as a window on the developing brain. *Curr Probl Pediatr* 28:69-92.
29. Louis J, Cannard C, Bastuji H, Challamel M-J 1997 Sleep Ontogenesis Revisited: A Longitudinal 24-Hour Home Polygraphic Study on 15 Normal Infants During the First Two Years of Life. *Sleep* 20:323-333.
30. Peirano P, Fagioli I, Singh BB, Salzarulo P 1989 Effect of early human malnutrition on waking and sleep organization. *Early Hum Dev* 20:67-76.
31. Wolff PH 1984 Discontinuous changes in human wakefulness around the end of the second month of life: a developmental perspective. Continuity of neural functions from prenatal to postnatal life. Blackwell Oxford, pp 144-158.
32. Anders TF, Keener MA, Kraemer H 1985 Sleep-wake state organization, neonatal assessment and development in premature infants during the first year of life. II. *Sleep* 8:193-206.
33. Schaefer CE 1990 Night waking and temperament in early childhood. *Psychol Rep* 67:192-194.
34. Sadeh A 1996 Evaluating night wakings in sleep-disturbed infants: a methodological study of parental reports and actigraphy. *Sleep* 19:757-762.
35. Sadeh A, Flint-Ofir E, Tirosh T, Tikotzky L 2007 Infant sleep and parental sleep-related cognitions. *J Fam Psychol* 21:74-87.
36. Sadeh A, et al. 1991 Actigraphic home-monitoring sleep-disturbed and control infants and young children: a new method for pediatric assessment of sleep-wake patterns. *Pediatrics* 87:494-499.
37. Meltzer LJ, Montgomery-Downs HE, Insana SP, Walsh CM 2012 Use of actigraphy for assessment in pediatric sleep research. *Sleep Med Rev* 16:463-475.

38. Shinohara H, Kodama H 2012 Relationship between duration of crying/fussy behavior and actigraphic sleep measures in early infancy. *Early Hum Dev* 88:847-852.
39. Bright MA, Frick JE, Out D, Granger DA 2014 Individual differences in the cortisol and salivary alpha-amylase awakening responses in early childhood: relations to age, sex, and sleep. *Dev Psychobiol* 56:1300-1315.
40. Gribbin CE, et al. 2012 The cortisol awakening response (CAR) in 2- to 4-year-old children: Effects of acute nighttime sleep restriction, wake time, and daytime napping. *Dev Psychobiol* 54:412-422.
41. Tribble RC, Dmitrieva J, Watamura SE, LeBourgeois MK 2015 The cortisol awakening response (CAR) in toddlers: Nap-dependent effects on the diurnal secretory pattern. *Psychoneuroendocrinology* 60:46-56.
42. Vital M, Howe AC, Tiedje JM 2014 Revealing the Bacterial Butyrate Synthesis Pathways by Analyzing (Meta)genomic Data. *mBio* 5:e00889-00814.

Acknowledgements

The authors thank study site staff for their cooperation. The participation of parents and infants in this study is greatly appreciated. Thank you also to Dr. Ronald Barr for permission to use the Baby's Day Diary[®] in this study.

Author accepted manuscript

FIGURES

Figure 1: Flow of study participants

Figure 2: Awake and content behavior (mean \pm SE): A) Total duration (minutes), B) Frequency (number of episodes), and C) Average duration of episodes (minutes) as measured by parent-reported Barr diary. The respective sample sizes for the Diurnal period at Baseline, Day 70, and Day 112 were: Control: 82, 69, 66 and PDX/GOS: 77, 66, 63. The respective sample sizes for the Nocturnal period at Baseline, Day 70, and Day 112 were: Control: 77, 63, 53 and PDX/GOS: 70, 58, 49. Diurnal: Control, solid blue circles; PDX/GOS, solid purple squares and Nocturnal: Control, open blue circles; PDX/GOS, open purple squares

Figure 3: Crying and fussing behavior (mean \pm SE): A) Total duration (minutes), B) frequency (number of episodes), and C) average duration of episodes (minutes) as measured by parent-reported Barr diary. The respective sample sizes for the Diurnal period at Baseline, Day 70, and Day 112 are Control: 78, 63, 61 and PDX/GOS: 75, 65, 61. The respective sample sizes for the Nocturnal period at Baseline, Day 70, and Day 112 are Control: 77, 58, 47 and PDX/GOS: 70, 60, 52. Diurnal: Control, solid blue circles; PDX/GOS, solid purple squares and Nocturnal: Control, open blue circles; PDX/GOS, open purple squares

Figure 4: Exploratory stool microbiome alpha diversity measures at Baseline and Day 112 in participants subset of the PDX/GOS group (n=6).

Figure 5: Exploratory stool microbiome alpha diversity measures at Baseline and Day 112 in participants subsets of the Control group (n=5).

Author accepted manuscript

TABLE 1 Infant characteristics at study entry

| | Study Group | |
|------------------------------|-------------|-------------|
| | Control | PDX/GOS |
| Total number of participants | 82 | 79 |
| Number of males/females | 43/39 | 42/37 |
| <i>males*</i> | | |
| Weight (g) | 4192 ± 81.1 | 4171 ± 73.3 |
| Length (cm) | 53.7 ± 0.3 | 53.6 ± 0.3 |
| Head circumference (cm) | 37.3 ± 0.2 | 37.4 ± 0.2 |
| <i>females*</i> | | |
| Weight (g) | 3963 ± 73.1 | 3712 ± 59.7 |
| Length (cm) | 52.9 ± 0.3 | 52.1 ± 0.3 |
| Head circumference (cm) | 36.7 ± 0.2 | 36.1 ± 0.2 |
| Age at enrollment | 23.4 ± 0.8 | 21.9 ± 0.8 |

* Mean ± standard error (SE)

Author accepted manuscript

Table 2. Diurnal, nocturnal, and 24-h sleep/wake variables by study time point and by group (mean±SE)

| Sleep/Wake Variables ^a | Baseline | | Day 70 | |
|--|------------|------------|------------|------------|
| | Control | PDX/GOS | Control | PDX/GOS |
| <i>Diurnal (day) period</i> | | | | |
| Wake-up time (h:min ± min) | 7:32 ± 8 | 7:26 ± 8 | 6:41 ± 7 | 6:47 ± 7 |
| Total wake time (h) | 10.2 ± 0.3 | 9.8 ± 0.3 | 12.0 ± 0.2 | 11.4 ± 0.2 |
| Napping | | | | |
| Number of naps | 5.4 ± 0.2 | 5.1 ± 0.2 | 5.3 ± 0.2 | 5.0 ± 0.2 |
| Duration of nap episodes (h) | 0.8 ± 0.04 | 0.9 ± 0.04 | 0.6 ± 0.03 | 0.7 ± 0.03 |
| Latency to 1 st nap (h) | 1.9 ± 0.1 | 1.8 ± 0.1 | 1.8 ± 0.1 | 2.2 ± 0.1 |
| Duration of 1 st nap (h) | 0.9 ± 0.1 | 1.1 ± 0.1 | 0.7 ± 0.1 | 0.8 ± 0.1 |
| Latency to 2 nd nap, since wake onset (h) | 4.2 ± 0.2 | 4.1 ± 0.2 | 4.2 ± 0.2 | 4.3 ± 0.2 |
| Latency to 2 nd nap, since end of 1 st nap (h) | 1.3 ± 0.1 | 1.1 ± 0.1 | 1.5 ± 0.1 | 1.5 ± 0.1 |
| Total nap (sleep) time (h) | 4.2 ± 0.2 | 4.4 ± 0.2 | 3.2 ± 0.2 | 3.3 ± 0.2 |
| <i>Nocturnal (night) period</i> | | | | |
| Sleep onset time (h:min ± min) | 22:05 ± 9 | 21:50 ± 9 | 21:50 ± 9 | 21:47 ± 9 |
| Total sleep time (h) | 7.1 ± 0.2 | 7.2 ± 0.2 | 6.4 ± 0.2 | 6.7 ± 0.2 |
| Duration of sleep episodes (h) | 1.8 ± 0.1 | 1.9 ± 0.1 | 1.6 ± 0.1 | 1.8 ± 0.1 |
| Longest sleep episode duration, 1 st half of night (h) | 2.7 ± 0.1 | 3.0 ± 0.1 | 3.2 ± 0.2 | 3.4 ± 0.2 |
| Longest sleep episode duration, 2 nd half of night (h) | 2.1 ± 0.1 | 2.2 ± 0.1 | 1.3 ± 0.1 | 1.6 ± 0.1 |
| Onset time, longest sleep episode, 2 nd half of night (h:min ± min) | 4:17 ± 6 | 4:33 ± 7 | 4:14 ± 7 | 4:20 ± 8 |
| Waking | | | | |
| Number of wake episodes | 3.3 ± 0.1 | 3.0 ± 0.1 | 3.6 ± 0.2 | 3.3 ± 0.2 |
| Duration of wake episodes (h) | 0.8 ± 0.04 | 0.8 ± 0.04 | 0.6 ± 0.03 | 0.7 ± 0.03 |
| Latency to first wake episode (h) | 1.8 ± 0.1 | 2.2 ± 0.1* | 2.0 ± 0.1 | 2.6 ± 0.1 |
| <i>24-h period</i> | | | | |
| Total wake time (h) | 12.4 ± 0.3 | 12.3 ± 0.3 | 14.2 ± 0.2 | 13.6 ± 0.2 |
| Total sleep time (h) | 11.2 ± 0.2 | 11.7 ± 0.2 | 9.6 ± 0.2 | 9.9 ± 0.2 |

^aComplete actigraphy data (all study timepoints) was available for n=124 participants.

*Significant group difference at study time point, P<0.05

TABLE 3 Salivary cortisol ($\mu\text{g/dL}$) at waking and post-waking

| | | Salivary cortisol ($\mu\text{g/dL}$) ^a | | |
|---------|--------------|---|------------------|--------|
| | Group (n) | Awakening | Post-wakening | P |
| Day 70 | Control (65) | 0.599 \pm 0.11 | 1.169 \pm 0.18 | <0.001 |
| | PDX/GOS (62) | 0.563 \pm 0.81 | 1.021 \pm 0.15 | <0.001 |
| Day 112 | Control (58) | 0.602 \pm 0.09 | 0.869 \pm 0.10 | <0.011 |
| | PDX/GOS (57) | 0.539 \pm 0.10 | 0.887 \pm 0.08 | <0.001 |
| Overall | | 0.576 \pm 0.05 | 0.995 \pm 0.07 | <0.001 |

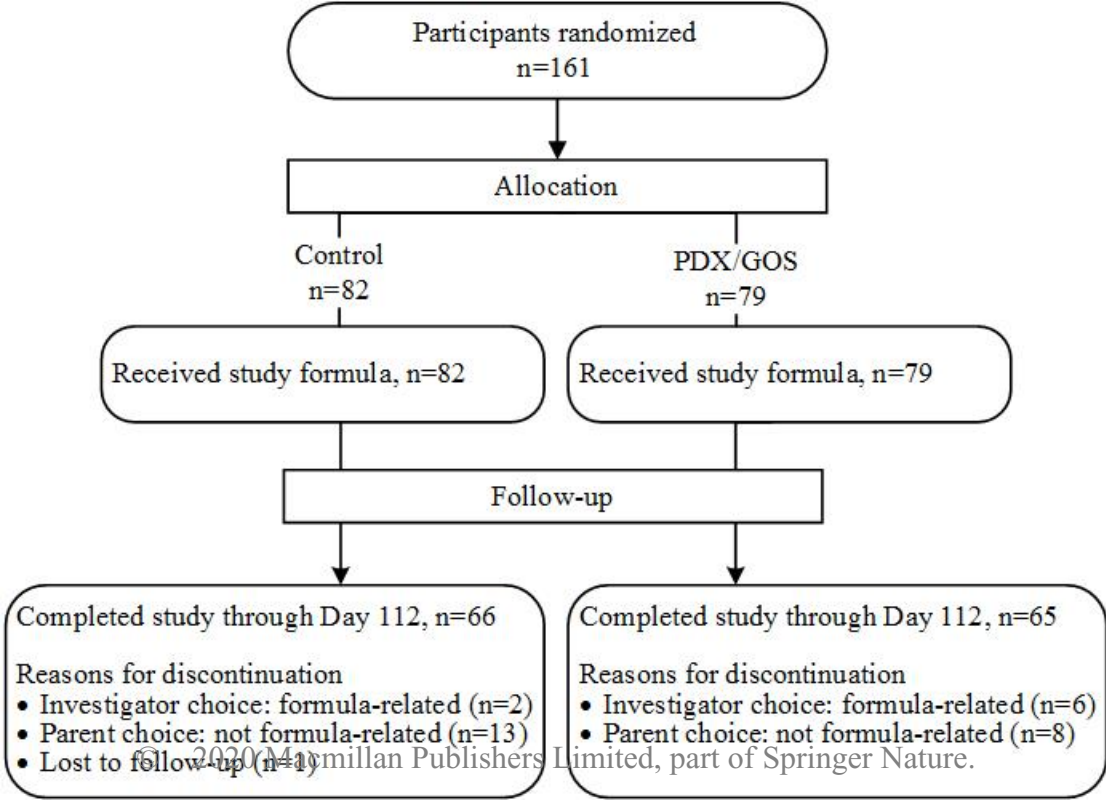
^aMean \pm standard error (SE)

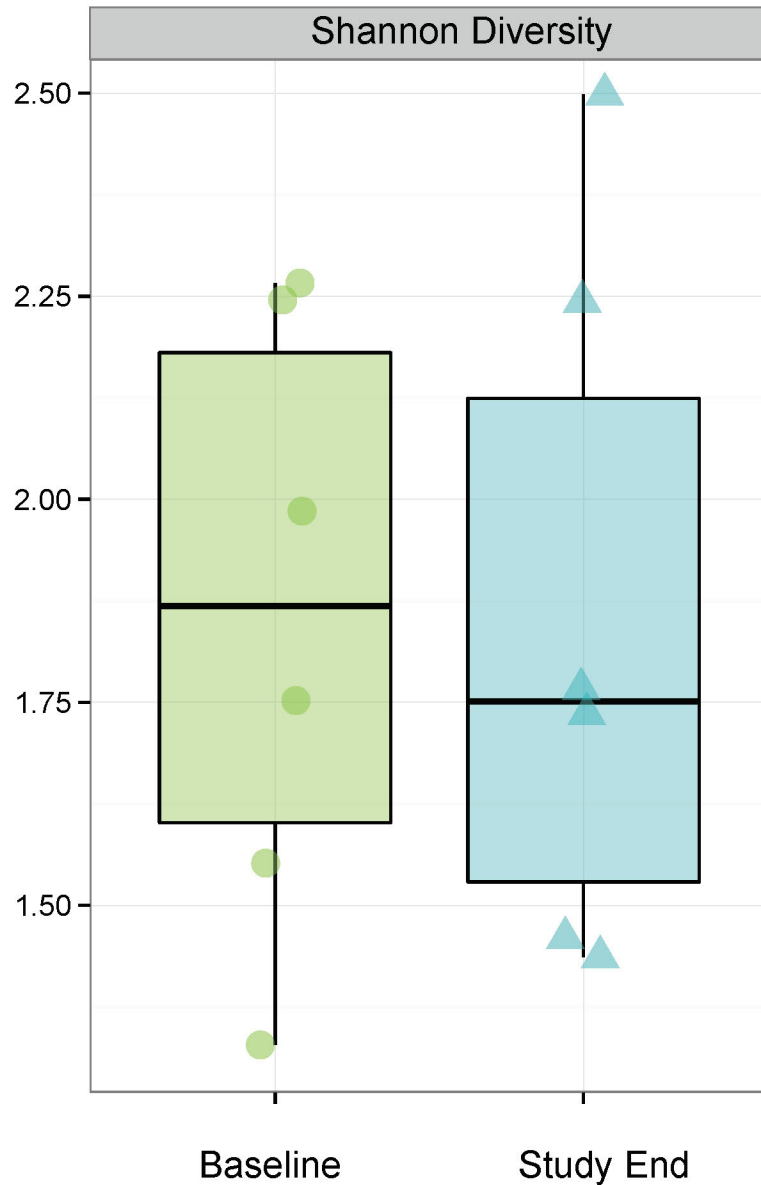
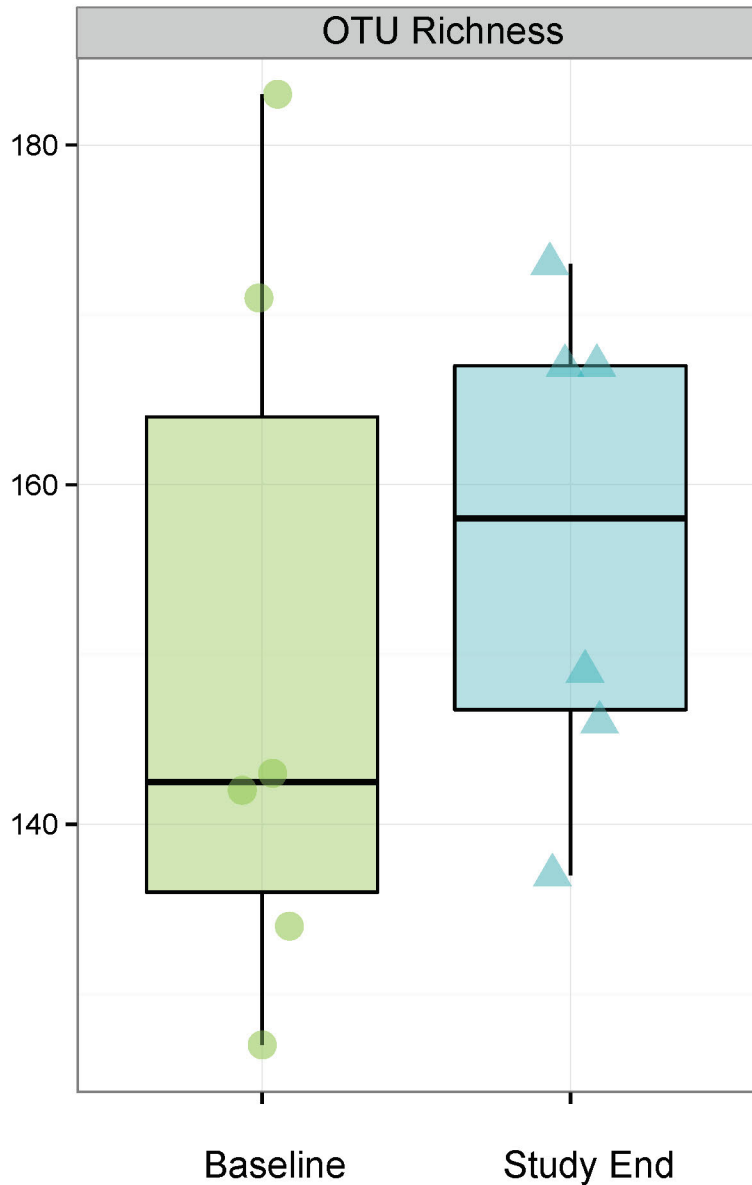
Author accepted manuscript

TABLE 4. Stool characteristics at Baseline, Day 70, and Day 112

| Age | Stool Frequency | | | Stool consistency, n (%) | | | | |
|----------|-----------------|----------------|----------|--------------------------|--------|----------|----------------------|--------|
| | Group (n) | Mean \pm SE* | <i>P</i> | hard | formed | soft | unformed or seedy | watery |
| Baseline | Control (82) | 3.0 \pm 0.2 | 0.440 | 0 (0%) | 2 (2%) | 42 (51%) | 36 (44%) | 2 (2%) |
| | PDX/GOS (79) | 2.7 \pm 0.2 | | 0 (0%) | 4 (5%) | 38 (48%) | 34 (43%) | 3 (4%) |
| Day 70 | Control (66) | 2.1 \pm 0.2 | 0.958 | 0 (0%) | 1 (2%) | 36 (57%) | 24 (38%) | 2 (3%) |
| | PDX/GOS (65) | 2.1 \pm 0.2 | | 0 (0%) | 0 (0%) | 41 (67%) | 19 (31%) | 1 (2%) |
| Day 112 | Control (62) | 1.9 \pm 0.2 | 0.099 | 0 (0%) | 0 (0%) | 42 (70%) | 16 (27%) | 2 (3%) |
| | PDX/GOS (60) | 2.3 \pm 0.2 | | 0 (0%) | 4 (7%) | 30 (55%) | 19 (35%) | 2 (4%) |

* Mean \pm standard error (SE) stool frequency. Means for Baseline, Day 70, and Day 112 are based on 24-hour recall at study visits





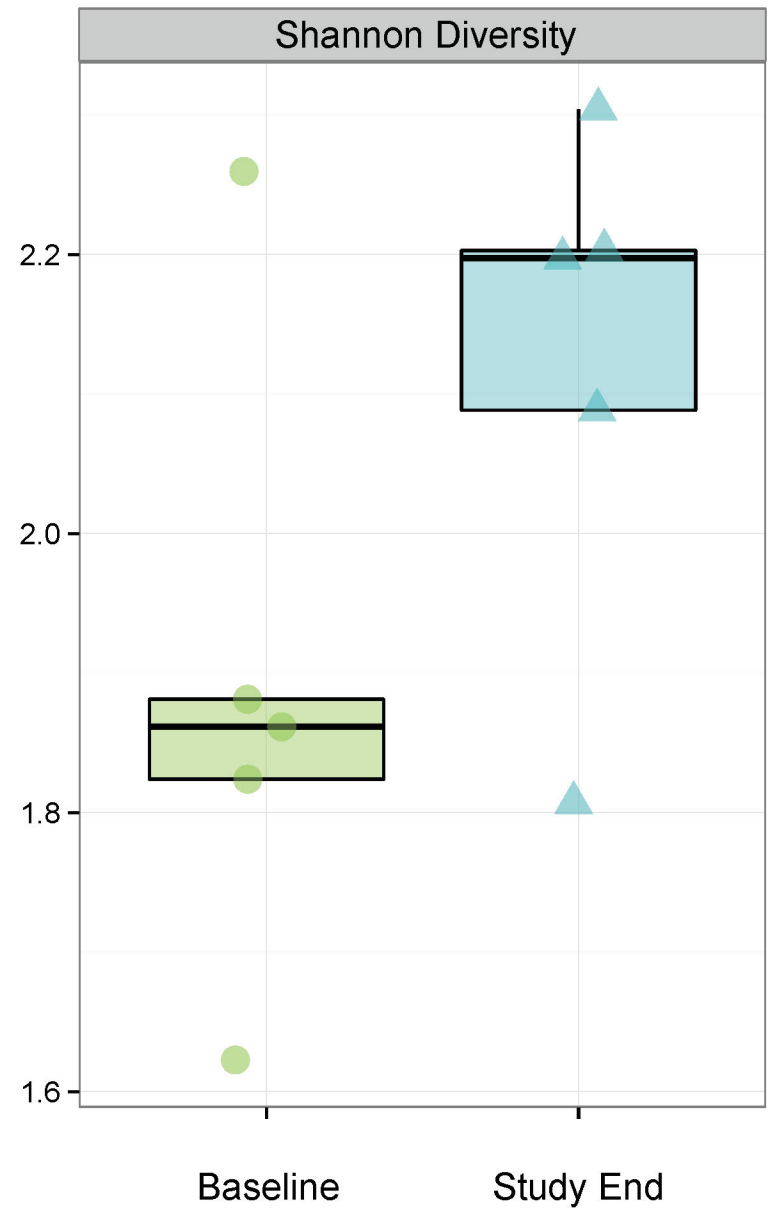
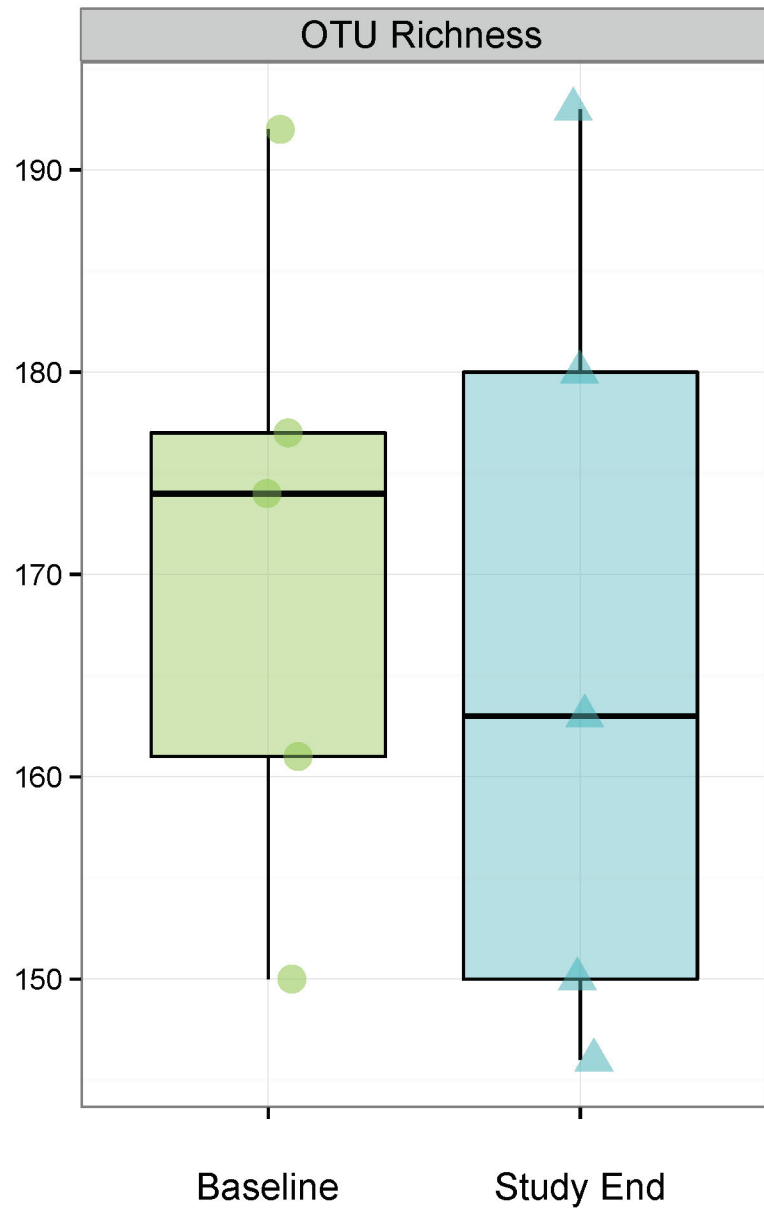
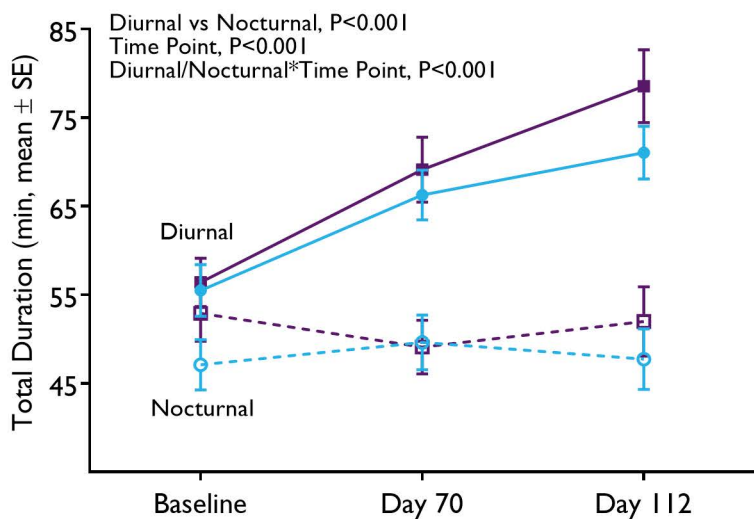
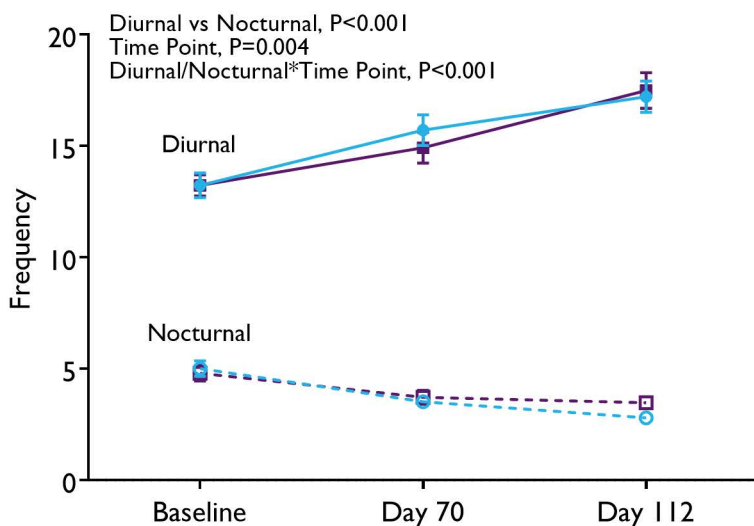
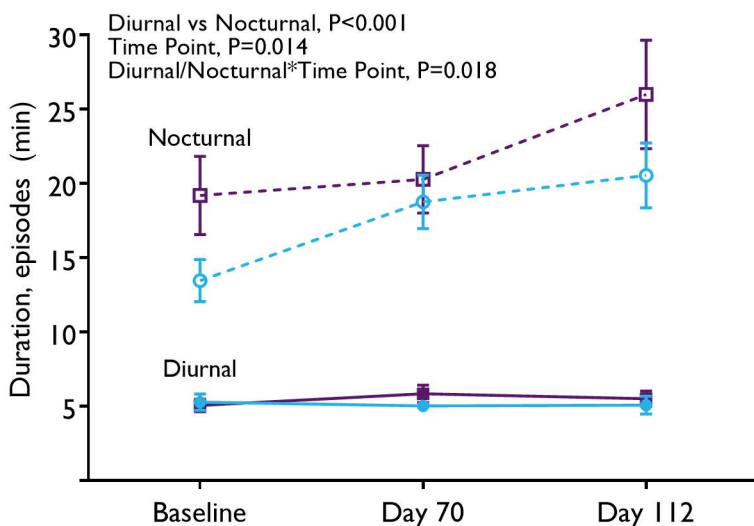


Figure 2**A****B****C**

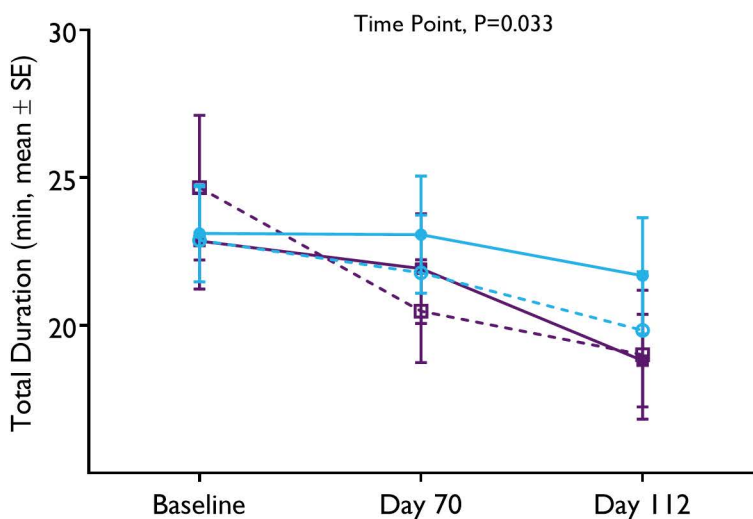
Key

Diurnal: ● Control, ■ PDX/GOS

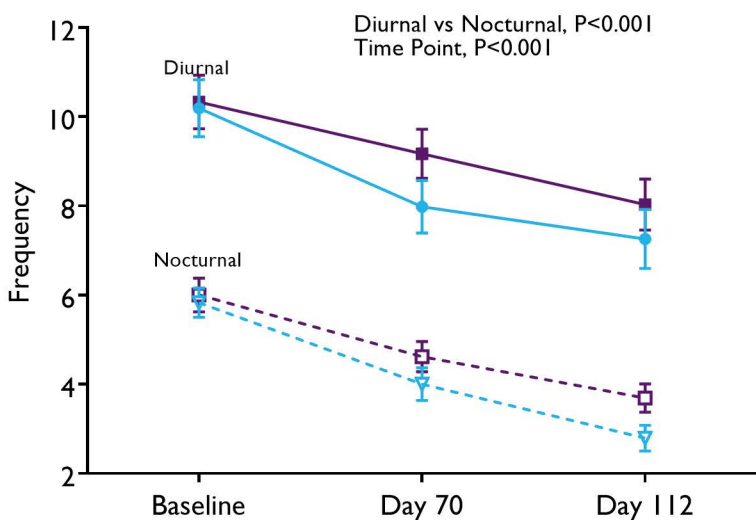
Nocturnal: ○ Control, □ PDX/GOS

Figure 3

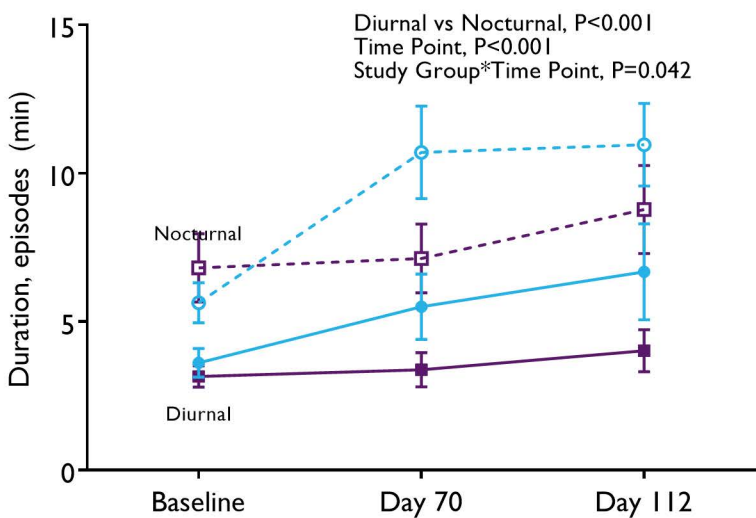
A



B



C



Key

Diurnal: ● Control, ■ PDX/GOS

Nocturnal: ○ Control, □ PDX/GOS