

# Bird Conservation International

<http://journals.cambridge.org/BCI>

Additional services for *Bird Conservation International*:

Email alerts: [Click here](#)

Subscriptions: [Click here](#)

Commercial reprints: [Click here](#)

Terms of use : [Click here](#)



---

## An assessment of the distribution, population size and conservation status of the Santa Marta Foliage-gleaner *Automolus rufipectus*: a Sierra Nevada de Santa Marta endemic

ESTEBAN BOTERO-DELGADILLO, NICHOLAS BAYLY, CAMILA GÓMEZ, PAULO C. PULGARÍN-R. and CARLOS ANDRÉS PÁEZ

Bird Conservation International / *FirstView* Article / May 2015, pp 1 - 15  
DOI: 10.1017/S0959270914000513, Published online: 22 April 2015

**Link to this article:** [http://journals.cambridge.org/abstract\\_S0959270914000513](http://journals.cambridge.org/abstract_S0959270914000513)

### How to cite this article:

ESTEBAN BOTERO-DELGADILLO, NICHOLAS BAYLY, CAMILA GÓMEZ, PAULO C. PULGARÍN-R. and CARLOS ANDRÉS PÁEZ An assessment of the distribution, population size and conservation status of the Santa Marta Foliage-gleaner *Automolus rufipectus*: a Sierra Nevada de Santa Marta endemic. *Bird Conservation International*, Available on CJO 2015 doi:10.1017/S0959270914000513

**Request Permissions :** [Click here](#)

# An assessment of the distribution, population size and conservation status of the Santa Marta Foliage-gleaner *Automolus rufipectus*: a Sierra Nevada de Santa Marta endemic

ESTEBAN BOTERO-DELGADILLO, NICHOLAS BAYLY, CAMILA GÓMEZ,  
PAULO C. PULGARÍN-R. and CARLOS ANDRÉS PÁEZ

## Summary

The Santa Marta Foliage-gleaner *Automolus rufipectus* is one of 19 endemic bird species found in the Sierra Nevada de Santa Marta (SNSM) in northern Colombia but until recently it was considered a sub-species of the Ruddy Foliage-gleaner *Automolus rubiginosus*. Consequently, published information on its distribution and ecology is lacking, and while it is classified as near-threatened, this designation was based on limited quantitative data. To improve our knowledge of the Santa Marta Foliage-gleaner's geographical distribution, elevation range, population density, habitat use and conservation status, we analysed both historical and recent site locality records and carried out variable distance transects within forested habitats and shade coffee plantations. We modelled the environmental niche of the species and subsequently estimated its extent of occurrence and area of occupancy, as well as population size. Our results consistently showed that the distribution of the Santa Marta Foliage-gleaner is more restricted than previously considered, both geographically and by elevation (we redefine elevation range as 600–1,875 m). This suggests that the species is more at risk of habitat transformation and combined with our estimates of population size (< 10,000 individuals), it is likely that the species will be uplisted to a higher threat category. More positively, and contrary to published accounts, we found that approximately 40% of the species' range lies within protected areas. Nevertheless, we recommend the implementation of strategies to maintain forest cover on the western flank of the SNSM and further research to better define the species' habitat needs and population dynamics.

## Introduction

The Sierra Nevada de Santa Marta (SNSM) is a coastal mountain range on the Caribbean coast of northern Colombia. Rising from sea level to 5,775 m, the SNSM is isolated and geologically different from the three main Andean chains that run through Colombia. Repeated colonisations by Andean birds and subsequent divergence has led to the differentiation of 70 endemic bird taxa (Todd and Carriker 1922, Krabbe 2008), of which 19 are currently treated as full species (Remsen *et al.* 2014). Despite harbouring extremely high levels of endemism for a continental site covering less than 6,000 km<sup>2</sup>, including many species considered threatened with extinction (Renjifo *et al.* 2002, BirdLife International 2014), the endemic avifauna of the SNSM is still relatively poorly known (see e.g. Renjifo *et al.* 2002). This is especially true for recently split species (Cadena *et al.* 2007, Caro *et al.* 2013) or species that have been reinstated as full species based on new evidence (Krabbe 2008, Isler *et al.* 2012). To address the critical need for information on the endemic species

of the SNSM (Renjifo *et al.* 2002), we carried out surveys for the Santa Marta Foliage-gleaner *Automolus rufipectus* at two sites, and combined our findings with historical and publicly available records.

The Santa Marta Foliage-gleaner was considered a full species as early as 1898 (Bangs 1898) but was later recategorised as a subspecies of the Ruddy Foliage-gleaner *Automolus rubiginosus* (Cory and Hellmayr 1925). Based on vocal evidence (Krabbe 2008) the Santa Marta Foliage-gleaner was reinstated as a full species (Remsen *et al.* 2014). This decision has recently received support from phylogenetic evidence (Claramunt *et al.* 2013), with the further suggestion that *A. rufipectus* should be assigned to the genus *Clibanornis*. The species occurs on both the northern and north-western slopes of the SNSM, with an elevational range reported to be between 900 m and 1,800 m (Todd and Carriker 1922, Strewe and Navarro 2004a, 2004b, Krabbe 2008). Krabbe (2008) suggests that the species is relatively resilient to habitat changes, and as a result it has been proposed that it should be considered near-threatened, despite its limited elevational range, which coincides almost in its entirety with the heavily transformed “coffee belt”, and the fact that it appears to be uncommon (see Todd and Carriker 1922).

Contrary to the status within protected areas reported by Krabbe (2008), in which it was only considered to occur in the El Dorado reserve, the SNSM National Park includes a number of areas within the species’ elevation range (e.g. the ‘Lengueta’), a corridor of the park which descends to sea-level. The Teyuna-Ciudad Perdida Archaeological Park also effectively protects forest within the elevational range of the species, as do an increasing number of other private reserves in the region.

In this study, we carried out variable distance transects and presence surveys along five widely distributed localities on the SNSM. We combined these observations with historical and publicly accessible records in order to assess the species’ range, population size, habitat loss and representation in protected areas, and to make a quantitative assessment of its conservation status. To predict the geographical and ecological distribution of the Santa Marta Foliage-gleaner, we used Ecological Niche Modelling (ENM; *sensu* Peterson *et al.* 2011) to project its climatic niche onto geographical space and indirectly estimate its extent of occurrence and area of occupancy. Based on our findings, we recommend further research needs and conservation actions for the species.

## Methods

### *Data collection and determination of elevational range*

Point locality data for the Santa Marta Foliage-gleaner were obtained from a variety of secondary sources including the public database GBIF (<http://www.gbif.org>). We also carried out surveys at a series of localities throughout the SNSM, including on the San Lorenzo ridge and along the watersheds of the Gaira, Frío, Buritáca and Córdoba rivers between 2008 and 2013. In the watersheds of the rivers Gaira and Buritáca, systematic surveys were carried out between 500 m above sea level and 2,500 m and 1,800 m respectively (see below). The lower and upper elevational limits from these surveys and the point locality data were used to determine the elevational range of the species.

### *Population density estimation*

In order to estimate density, we carried out 179 variable-distance transects at regular elevation intervals between 600 m and 2,100 m in the watershed of the Gaira river/San Lorenzo ridge in shade coffee plantations and forest. Each 500-m long transect was walked at an even pace by one experienced observer (NB) between dawn and 09h30. Most transects were carried out during the build up to the breeding season (NB pers. obs.) between March and May in four consecutive years (2010–2013), although a small number of transects were carried out in October and November in 2009. During each transect, we estimated the perpendicular distance from the transect centre to each Santa Marta Foliage-gleaner detected by sight or sound. The resulting records were

assigned to one of two habitats, shade coffee or forest, and to one of three elevation bands: 500–1,000 m, 1,000–1,500 m and 1,500–2,000 m. The majority of birds were recorded at a distance of < 50 m from transect centres, so we excluded records further than 50 m, resulting in a final dataset of 40 records.

Observation records were analysed using the multiple covariate distance sampling engine in the program Distance to account for detectability differences between habitats and elevations (Thomas *et al.* 2010). We tested the hazard-rate and half-normal detection functions with cosine, simple polynomial and hermite polynomial series expansions and evaluated model fit with Akaike Information Criteria (AIC). The model with the lowest AIC value was then used to estimate densities (Marques and Buckland 2003, Marques *et al.* 2007). We estimated density for three elevational ranges (500–1,000, 1,000–1,500 and 1,500–2,000 m), including habitat (forest or shade coffee) as a covariate and, separately, estimated densities for each habitat with elevation as a covariate.

### *Ecological niche modelling*

An initial set of 49 geographical records was examined in order to identify and remove spatial and environmental outliers, and to eliminate duplicate records (see Chapman 2005). For the resulting subset of 25 records used for modelling, we carried out a series of *a priori* analyses to test for any spatial or environmental bias (Hidalgo-Mihart *et al.* 2004, Iguchi *et al.* 2004). First, we tested if point locality data deviated from a random spatial distribution using a two-tailed Z-test on the normalized scores from an Average Nearest Neighbour Analysis (Krebs 1989), available in the Spatial Statistics Tools of ArcGIS 9.3 (ESRI 2008). We then tested the null hypothesis that the mean linear distance of locality data from human settlements was not different to the mean linear distance for each of 10 different sets of randomly generated points, in order to check for sampling bias. To test for differences between means, we used 10 independent two-tailed permutation tests based on Monte-Carlo sampling with 1,000 randomisations each. Linear distances and random point generation were carried out in ArcGIS 9.3 and permutation tests were run in R with the 'coin' package (Hothorn *et al.* 2008). Finally, to determine whether point locality data could be taken as an even and representative sample of the environmental niche of the species (Peterson *et al.* 2011), we tested for spatial autocorrelation among the climatic variables used for modelling by running a two-tailed Z-test on the normalised scores of a Moran's I Autocorrelation Index available in ArcGIS 9.3.

The climatic variables selected for modelling purposes were obtained from the WorldClim database at 1 km<sup>2</sup> resolution (<http://www.worldclim.org/>). To avoid multi-collineality and overfitting in our final models (Peterson 2007), and to obtain an appropriate variable set size for the number of locality points (see Fielding and Bell 1997), we reduced the original set of 19 climatic variables to 10 (Table 1). We achieved this by assessing the Spearman's correlation coefficient ( $r_s$ ) for the 19 variables and the 25 locality records, and using this coefficient as a distance measure for a neighbour joining cluster analysis (see Krebs 1989) with 1,000 bootstrap replicates. We first selected all clusters that were separated from the others by a distance < 0.8 and then chose the most distinct variable within each (in terms of its distance from other clusters) to represent the clusters.

To model the ecological niche of the Santa Marta Foliage-gleaner, we used the MaxEnt algorithm for ecological niche modelling (Phillips 2010). In accordance with our sample size, we ran nine distinct models comprising different combinations of three regularisation constants (0.25, 0.5 and 0.8) and linear, quadratic and linear + quadratic features (Phillips and Dudik 2008). In all cases, model calibration was based on all available occurrence data ( $n = 25$ ), with a 1,000 sample point background and an extent restricted to the SNSM at elevations > 400 m. To select among models we used AIC corrected for small sample sizes (AICc) using the model selection tool in the software ENMTools 1.3 (Warren *et al.* 2010).

The selected model was subsequently evaluated using a five-fold cross-validation technique, which is considered appropriate for our sample size (Hastie *et al.* 2001, Peterson *et al.* 2011).

Table 1. Heuristic estimates of the relative contribution of individual environmental variables to the definition of a distribution model for the Santa Marta Foliage-gleaner.

Environmental variable	Contribution (%)
Precipitation of driest quarter	51.66
Precipitation of warmest quarter	34.30
Temperature Range	6.48
Precipitation of wettest quarter	4.66
Minimum temperature of coldest month	1.54
Precipitation of coldest quarter	1.05
Isothermality	0.15
Mean diurnal temperature range	0.08
Annual precipitation	0.06
Temperature seasonality	0.01

A total of four runs of the five-fold cross-validation were employed through data reshuffling (Efron 1987), producing a total of 20 replicates that could be used to assess uncertainty around estimates of model performance and significance (Hastie *et al.* 2001, Dormann 2007, Elith *et al.* 2011). Model performance was assessed based on regularised training gain values and threshold-based omission error rates on training and test data, whereas model significance was tested using threshold-dependent binomial probability tests (Anderson *et al.* 2002, Pearson *et al.* 2007, Phillips and Dudik 2008). For this, we used the 10 percentile training presence and 0.9 fixed sensitivity thresholds (see below). We estimated confidence intervals for gain values and omission rates using the mean and standard deviation from the 20 replicates described above, to determine the degree of uncertainty around model performance. Finally, we used jackknife replicates to assess the explanatory power of the 10 environmental variables employed.

Following Peterson *et al.* (2011), we used the model calibrated with all 25 geographical records (see above) for projecting the species range and for further analyses requiring geographical projections.

### *Geographic distribution*

The logistic model output from MaxEnt was imported into ArcGIS 9.3 to obtain a predicted geographic distribution based on a grid with 1-km<sup>2</sup> resolution. The 10 percentile training presence and the 0.9 fixed sensitivity thresholds (hereafter 10ptt and 0.9fst) were defined to convert the continuous model output into a binary prediction of presence/absence (Peterson *et al.* 2011). Given the lack of true absence data, we used these two presence-only thresholds to avoid including any measurement of commission error during the subsequent assessment of model performance and significance (Fielding and Bell 1997, Peterson *et al.* 2011). These binary predictions were taken as two different estimates of the species occupied distributional area. Following the BAM diagram framework (Peterson *et al.* 2011), our models were based on the following assumptions: (i) the modelling extent clearly delimits all the potential area that the species could reach through dispersal and there is no geographical barrier limiting its distribution within the study area; (ii) the species is the only *Automolus* foliage-gleaner in the region and only one other related species is present but at higher altitudes (*Thripadectes*, treehunters), therefore it is unlikely that any negative interaction with ecologically similar birds could be limiting its geographical range (Pigot and Tobias 2013, Claramunt *et al.* 2013).

### *Ecological distribution*

The ecological distribution of the Santa Marta Foliage-gleaner was determined by superimposing the two predictions of its occupied distribution at a 1-km<sup>2</sup> resolution (see above) on geographical

layers of biomes from 2010, available from the Land-use Planning Geographic Information System of the Agustín Codazzi Geographic Institute of Colombia (<http://sigotn.igac.gov.co/sigotn/>), and also with digital maps from the Holdridge Life Zones (<http://www.fao.org/geonetwork/srv/>) and WorldClim layers (see above). Subsequently, we estimated the representation of each biome/life zone within the species range using ArcGIS 9.3.

### *Extension of occurrence and area of occupancy*

We estimated extension of occurrence (EOO) and area of occupancy (AOO) following the IUCN guidelines and compared the resulting values with the threshold values given under criterion B (IUCN 2011) to assess conservation status. EOO was defined as the area inside a convex hull or minimum convex polygon constructed from all 25 occurrences, and since exclusion of discontinuities or disjunctions are discouraged when assessing EOO under criterion B, we did not remove unsuitable habitats for its computation (see IUCN 2011). For the AOO, we estimated two values based on the potential habitat inside our two predictions of the area occupied by the species, by overlapping distributions with rasterised land-cover and ecosystem layers from 2010 using ArcGIS 9.3. Potential habitat was defined taking into account all our observations from 2009 to 2013 and information from Remsen (2003) and Krabbe (2008). We treat the two AOO values as an interval within which the real AOO is expected to occur.

### *Population size*

To estimate population size, we combined density estimates by elevation and habitat with estimates for the area of each elevational band and habitat within our predicted AOOs. The resulting population estimates were compared with the population threshold given under IUCN criterion C (IUCN 2011). These calculations were based on the assumption that density did not vary across the species' distribution and thus it should only be considered as a preliminary assessment of population size until density estimates from other parts of the species range are available.

### *Habitat loss*

We calculated the rate of habitat loss by estimating the area for which the original vegetation cover had been transformed within the predicted geographical range. This was carried out by overlapping the AOO projections at 1 km<sup>2</sup> with rasterised land-use layers and two additional layers of original ecosystems and biomes (see above).

### *Representation in protected areas*

Taking the AOO projections at 1 km<sup>2</sup>, we calculated the percentage of the species' distribution within protected areas by superimposing it on a layer for the National Protected Areas System of Colombia (SINAP; Vásquez-V. and Serrano-G. 2009).

## **Results**

### *Elevational distribution*

Records of Santa Marta Foliage-gleaners came from elevations between 610 m and 1,875 m (Figure 1; Table S1 in the online supplementary material). The lower limit was recorded during the last decade, however, the upper limit originates from two specimen records dating back to 1946. In the last decade the highest record was at 1,560 m.

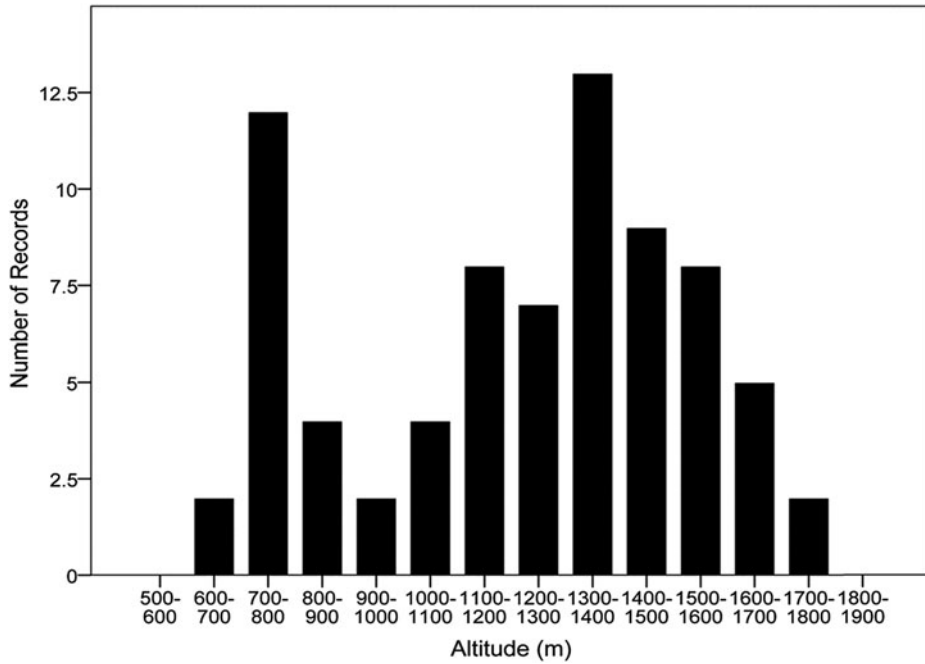


Figure 1. Frequency of observation records for Santa Marta Foliage-gleaners at different elevations in the Sierra Nevada de Santa Marta, Colombia.

### Population density estimates

To estimate densities we fitted models including elevation or habitat as factors. There was limited support for a difference in density between forest and shade coffee based on AIC values but there was a clear difference in density by elevation (Table 2). Within the core of the foliage-gleaner's elevational range (1,000–1,600 m; Figure 1), densities were estimated at 10.2 individuals/km<sup>2</sup> (see Table 2).

### Ecological niche modelling

Point locality data showed no spatial or sampling bias according to the statistical tests performed. The spatial distribution of point locality data was not significantly different from a random distribution ( $Z_{(0.05)} = -1.59$ ,  $P = 0.11$ ), and the permutation tests indicated that locality data were

Table 2. Density estimates (no. Individuals/km<sup>2</sup>) for Santa Marta Foliage-gleaners in two habitats and within three elevation bands in the Gaira river watershed and on the San Lorenzo ridge, Sierra Nevada de Santa Marta, Colombia.

	Density estimates	95% Confidence Intervals
<b>Habitat</b>		
Forest	7.3 ind/km <sup>2</sup>	4.8-11.1
Shade-coffee	7.1 ind/km <sup>2</sup>	3.4-14.7
<b>Elevation</b>		
500-1,000 m	6.3 ind/km <sup>2</sup>	2.9-13.7
1,000-1,500 m	10.2 ind/km <sup>2</sup>	6.5-16.1
1,500-2,000 m	6.6 ind/km <sup>2</sup>	2.9-15.1

not clumped or over dispersed around human settlements (all  $P > 0.05$ , 99% CI = 0.07–0.52). Further, we found no environmental bias among the spatial records, with only four out of 10 climatic variables examined exhibiting spatial auto-correlation (all four  $P < 0.05$ ).

The model using linear features and a regularisation constant (i.e. beta-multiplier) of 0.8 had the lowest AICc value relative to the other eight alternatives (see Table 3). The model selected performed well based on the theoretical parameters used. The mean regularised training gain was  $1.15 \pm 0.09$  ( $n = 20$ ), while mean values of threshold-based training omission error rates ( $10ptt = 0.1 \pm 0.0001$ ,  $0.9fst = 0.04 \pm 0.02$ ) and test omission rates ( $10ptt = 0.19 \pm 0.16$ ,  $0.9fst = 0.05 \pm 0.1$ ) were low. All replicates of the model using different sets of training/test data were highly significant according to the threshold-dependent binomial tests (all  $P < 0.05$ ).

Heuristic estimates of the relative contribution of climatic variables to the model were obtained from all jackknife replicates. They indicated that ‘precipitation of the driest quarter’ and ‘precipitation of the warmest quarter’ made the greatest contribution, accounting for a cumulative percentage of 85.95% (Table 1). Similarly, jackknife tests of regularised training gain and test gain showed that the same two variables in addition to ‘annual precipitation’ were important for model construction.

### Geographic and ecological distribution

The  $10ptt$  and the  $0.9fst$  were used to obtain two values of the species geographic range defined at a 1-km<sup>2</sup> resolution. We interpret these two values, 2,515 km<sup>2</sup> and 3,407 km<sup>2</sup> respectively, as an interval for the extent of the species occupied distribution. Hereafter, any estimates of areas, rates of habitat loss or percentages are expressed as an interval based on the above areas.

Our model predicted that 88–92% of the range of the Santa Marta Foliage-gleaner was distributed along the north-western and northern flanks of the SNSM between 600 and 2,000 m (Figures 1 and 2), and only 6–10% was above or below this elevational range. Four main biomes (*sensu* Holdridge 1963) were represented within the occupied area, of which the Low-Andean and Mid-Andean Orobiomes of Santa Marta accounted for 94–95% of total extent, whereas the Dry-Caribbean and Tropical-Humid Magdalena Zonobiomes comprised less than 6%. The species was largely predicted to occur in areas with mean annual temperatures ranging from 16 to 24°C (97–98% of the extension) and an annual precipitation above 2,500 mm (73–74% of the area), in which rainfall was highly seasonal but temperatures were relatively constant (Figure S1).

### Extension of occurrence (EOO) and area of occupancy (AOO)

We estimated an EOO of c.3,538 km<sup>2</sup> (Figure 2), while our interval for AOO at a resolution of 1 km<sup>2</sup> ranged from 1,940 to 2,514 km<sup>2</sup> (Figure 2). The EOO estimate and the lower interval of the

Table 3. Model set used to choose among three different features (L: linear; Q: quadratic; L + Q: linear + quadratic) and regularisation constants (0.25, 0.5 and 0.8) for modelling the ecological niche of the Santa Marta Foliage-gleaner. Models are ordered according to the AICc value.

Model	Parameters	AICc	$\Delta$ AICc	Wi
L (0.8)	5	405.79	0.00	0.7334
L + Q (0.8)	7	407.92	2.13	0.2524
Q (0.8)	4	415.41	7.48	0.0060
Q (0.25)	6	416.75	8.83	0.0031
L (0.5)	6	417.74	9.82	0.0019
Q (0.5)	6	417.86	9.94	0.0018
L (0.25)	6	419.12	11.20	0.0009
L + Q (0.5)	6	420.64	12.72	0.0004
L + Q (0.25)	7	423.19	15.26	0.0001



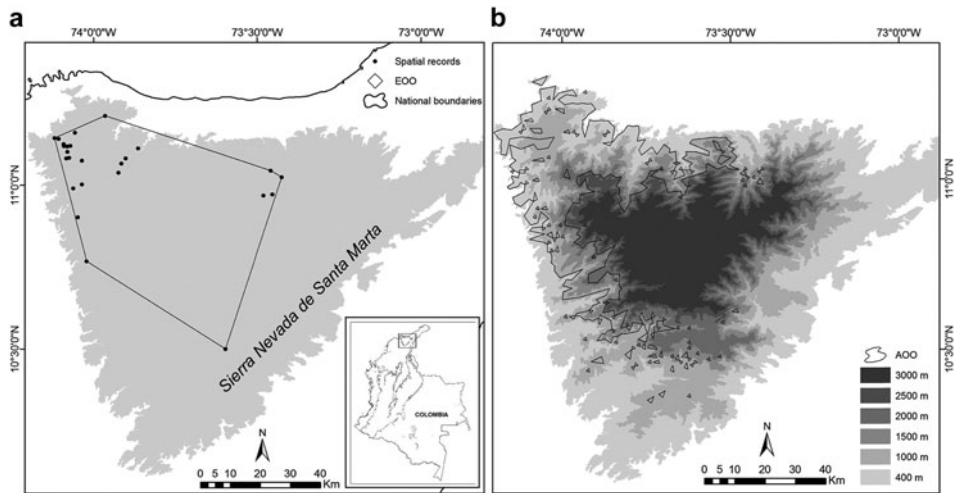


Figure 2. Extension of presence (EOO) and area of occupancy (AOO) of the Santa Marta Foliage-gleaner in the Sierra Nevada de Santa Marta, Colombia. a. EOO estimated as the minimum convex polygon containing all geographical records; b. The projected AOO (at 1-km<sup>2</sup> resolution) over an elevational gradient ranging from 400 to 3,000 m.

AOO estimates are below the IUCN thresholds used for threat categorisation under criteria B<sub>1</sub> and B<sub>2</sub> (see Table 4).

### Population size

Assuming that density is similar throughout the AOO and that all individuals in the population are mature breeding birds, the population size of the Santa Marta Foliage-gleaner could range between c.18,600 and 26,200 individuals, based on our two values for AOO. Under more realistic assumptions, where at least 50% of the AOO is occupied or at least 50% of the total population are breeding adults (see Renjifo *et al.* 2002), the estimated population decreases to between 9,300–13,100 individuals. The lower end of this estimation is below the IUCN thresholds for ‘Vulnerable’ under criterion C (Table 4).

Table 4. Extent of occurrence (EOO), area of occupancy (AOO) and population size estimates for the Santa Marta Foliage-gleaner, with lower and upper thresholds where appropriate. Likely threat categories are presented based on threshold values for the IUCN criteria B and C (see parentheses). Lower and upper estimates are based on the two projections of the species occupied distributional area (see Methods).

	Lower	Upper	IUCN threshold lower	IUCN threshold upper
Distribution (km <sup>2</sup> )*	2,515	3,407		
EOO (km <sup>2</sup> )**	3,538		EN (B <sub>1</sub> )	
AOO (km <sup>2</sup> )	1,940	2,514	VU (B <sub>2</sub> )	NT
Population size <sup>^</sup>	9,300	13,144	VU (C <sub>1</sub> )	NT

\*Occupied distributional area. The lower and upper limits correspond to the projected occupied areas obtained from applying the 10 percentile training presence and the 0.9 fixed sensitivity thresholds respectively.

\*\*Only one value obtained for the minimum convex polygon based on all spatial records.

<sup>^</sup>Population sizes shown here assume an occupation of 50% of the AOO or that at least 50% of the total population correspond to breeding adults (see text).

*Habitat loss and representation in protected areas*

According to our estimates, c.23–26% of the area occupied by the species has been subjected to vegetation transformation, with annual and perennial crops and pastures replacing native forests (Figure 3). Along the north-western and western margins of the SNSM, where most records were located (Figure 3), small to moderate-sized agricultural areas and secondary vegetation were relatively common. Records from the southern and north-eastern portion of the massif were near to or enclosed within extensive pastures (Figure 3).

Our analysis showed that three national protected areas are inside the estimated AOO of the Santa Marta Foliage-gleaner, covering c.870–1,130 km<sup>2</sup> of its extent (44% of the two estimated AOOs; Figure 4). The Sierra Nevada de Santa Marta National Park covered almost the entire northern portion of its AOO, while two other areas covered a small portion within the north-eastern corner of its range: the Jirocasaca Reserve and the Tayrona National Park (at 500–600 m; see Figure 4). No regional or local protected areas were represented in the analysis.

**Discussion**

Field data and distribution modelling results show that the Santa Marta Foliage-gleaner is distributed along the most humid flanks of the Sierra Nevada de Santa Marta (SNSM) and is associated with areas of high precipitation and mild temperatures (Figure S1). Both historical and recent records indicate that the species occurs mainly at elevations of 700–1,700 m, but ecological niche models suggest that it could occur a few hundred meters above or below this range (Figures 1 and 2). This species is currently considered as ‘Near Threatened’ (NT; BirdLife International 2014), although

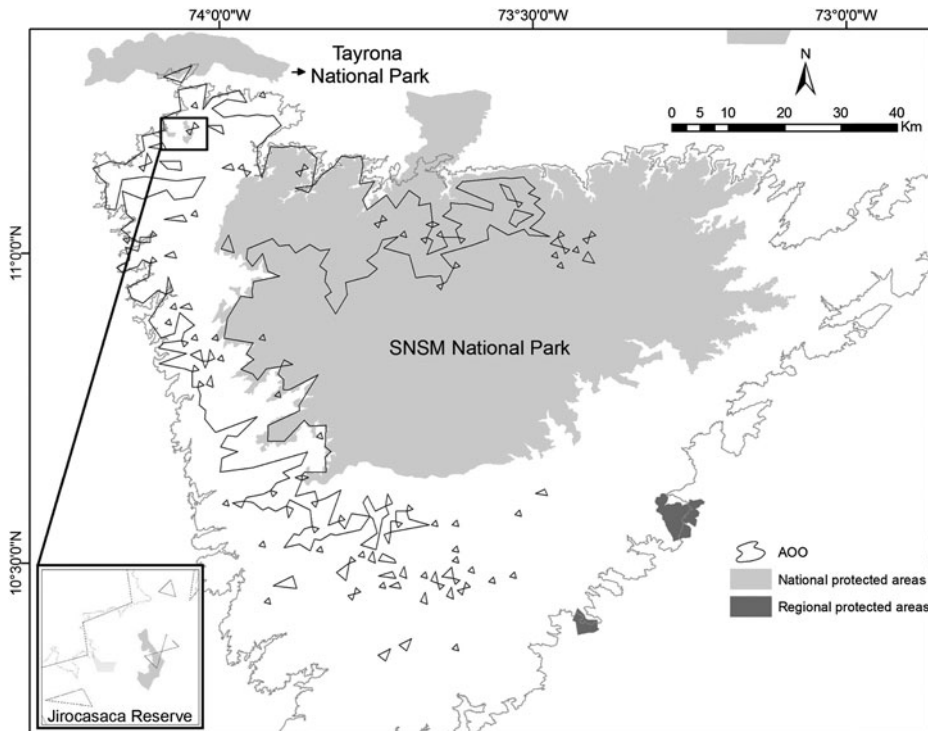


Figure 3. Representation of national and regional protected areas within the area of occupancy AOO (at 1-km<sup>2</sup> resolution) of the Santa Marta Foliage-gleaner in the Sierra Nevada de Santa Marta.

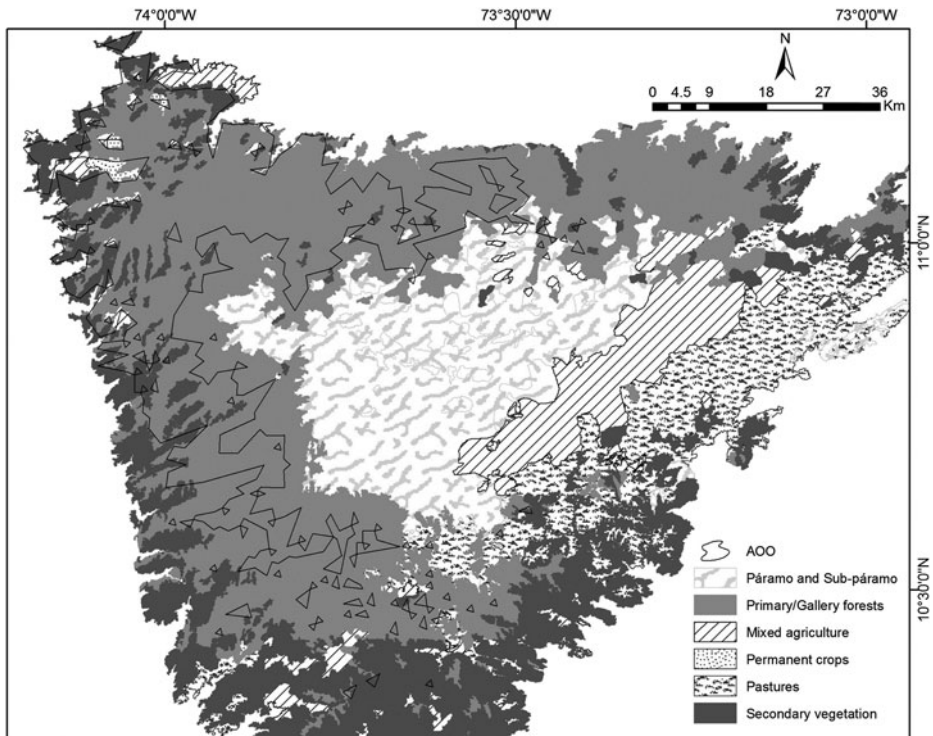


Figure 4. Types of vegetation cover within and around the area of occupancy of the Santa Marta Foliage-gleaner in the Sierra Nevada de Santa Marta.

there is a lack of quantitative information supporting such a categorisation. While our data require further refinement in order to propose a definitive conservation status, they indicate that the Santa Marta Foliage-gleaner's distribution and population size are within the criteria for qualifying as a threatened species (see Renjifo *et al.* 2002). Indeed, our estimate of extent of occurrence (EOO) qualifies the species as 'Endangered' (EN), while our lower threshold estimate for area of occupancy (AOO) and population size support a designation of 'Vulnerable' (VU). More positively and contrary to previously published information implying poor representation in protected areas (Krabbe 2008, BirdLife International 2014), we estimate that national and regional protected areas cover nearly 50% of the species' AOO.

### *Modelling considerations*

High spatial correlation between locality records can bias distribution models based on environmental niche modelling (Peterson *et al.* 2011), however, we found no spatial bias among the field data used. Further, we found environmental auto-correlation on just four out of 10 climatic variables and according to jackknife tests none of these variables made a major contribution to model construction. In addition, the usage of two presence-only thresholds instead of one, allowed us to deal explicitly with the trade-off between the spatial extent of the predicted distribution and the inclusion of outlier pixels within it (see Pearson *et al.* 2007, Peterson *et al.* 2011), and generate an interval within which the true occupied distributional area of the species probably occurs. Finally, given that there are no apparent physical barriers preventing movement between forested areas within the study region (Figure 3), and that our niche models pointed to environmental and climatic variables as

potential factors preventing the species establishment on the drier and more seasonal flanks of the massif, we expect environmental niche models to closely approximate the species' range.

### Population density

The Santa Marta Foliage-gleaner has been considered a relatively rare to locally common bird (Krabbe 2008, BirdLife International 2014) but there are no published estimates of either density or population size. Here we obtained density estimates that ranged from 6.3 to 10.2 individuals/km<sup>2</sup>, and their variances indicated that the species could be perceived as rare to common depending on local and elevational variation (Table 2). Our density estimates are slightly higher or within the range estimated for the congeneric *Clibanornis rubiginosus* (sensu Remsen *et al.* 2014), 3–6 birds/km<sup>2</sup> at four sites in French Guiana; members of the *Automolus* genus (*A. ochroalemus*, 3–4 birds/km<sup>2</sup> in French Guiana; *A. infuscatus*, 3–12 birds/km<sup>2</sup> in south-eastern Peru and 9–21 birds/km<sup>2</sup> in French Guiana; *A. subulatus*, 4–7 birds/km<sup>2</sup>), and even for distant relatives such as *Anabacerthia* spp. and *Phylidor* spp. (Remsen 2003). Elevational variation in density estimates has not been described for any furnarid, yet we have found that density nearly doubled at mid-elevations within the species' elevation range (between 1,000 and 1,500 m; Table 2). Determining the underlying causes of this variation are beyond this study, but we hypothesise that abundance may be normally distributed across the elevation range, a highly consistent pattern found in different bird communities (e.g. Terborgh 1971, 1977).

We did not find differences in density between forest habitats and shade-coffee plantations, potentially reflecting the apparent tolerance of this species to habitat transformation (BirdLife International 2014). However, most individuals in coffee plantations were associated with secondary vegetation bordering streams or in abandoned lots (NB pers. obs.), and the presence of these "habitat features" may allow birds to persist in transformed areas. Nevertheless, it is unknown whether birds would persist in patches of secondary vegetation if they were immersed in a matrix of cattle pastures or sun-grown coffee. Clearly, habitat use and the relative quality of the habitats occupied by the species require further study.

Our estimates for population size ranged from 9,300 to 13,100 individuals, but these values should be treated cautiously given the assumptions on which our calculations were derived. Our estimates are based either on the conservative assumption that (i) 50% of the population were mature breeding adults (see Renjifo *et al.* 2002), although in some European passerines breeding adults do not usually comprise more than 40% of the population (e.g. Payevsky and Shapoval 2000, Wysocki 2004); or that (ii) 50% of the AOO was occupied at a constant density, when it is unlikely that individuals occupy the full extent of the AOO or at a constant density. Therefore, it is probable that our estimates represent an overestimation of the true population size, and that population size is < 10,000 individuals, which would qualify the species as 'Vulnerable' under the IUCN criterion (Table 4).

### Elevational distribution

Historically, the Santa Marta Foliage-gleaner has been considered to occur between 700 and 2,100 m (Krabbe 2008) but records collected since 1950 and in recent years have failed to confirm its presence above 1,800 m. By combining all our field observations with point locality data used for niche modelling, we propose an elevation range of 600–1,875 m. Since our niche model predicts presence close to 2,200 m in elevation, we cannot rule out the possibility that the species may occasionally occur above 2,000 m, but this will require further confirmation.

### Geographic distribution

According to our distribution models, the Santa Marta Foliage-gleaner is restricted to the northern and western flanks of the Sierra Nevada de Santa Marta, in north-eastern Colombia. The extent of occurrence (EOO) proposed here was estimated at 3,538 km<sup>2</sup>, suggesting that the species has a highly restricted range, being lower than the established thresholds for the 'Vulnerable' (VU) and

'Endangered' (EN) categories under the IUCN criterion B1 (IUCN 2011). The interval for the area of occupancy (AOO) was not entirely consistent with the EOO, but the lower limit was below the VU threshold under criterion B2 (Table 4). Although IUCN strongly recommends estimating the AOO at a 4-km<sup>2</sup> resolution, in order to avoid underestimates or obtaining false positives, our analyses were carried out at 1-km<sup>2</sup> resolution. We chose this resolution taking into account the highly variable and complex topography of the Sierra Nevada de Santa Marta, where extreme variations in elevation and habitat can occur over small spatial scales, e.g. the Caribbean Sea and the Sierra's snow-capped peaks (> 5,000 m) are separated by less than 50 km. However, even when estimating AOO at a 4 km<sup>2</sup> resolution, its extent did not increase by more than 200 km<sup>2</sup> (data not shown).

### *Conservation status*

Our results imply that the distribution of the Santa Marta Foliage-gleaner is smaller than formerly considered (see BirdLife International 2014), and it follows that the species' ability to respond to potential pressures is more limited than previously thought. The EOO is considered to be a measure of the degree to which any threat is spread spatially across a species' geographic range (IUCN 2011), and given this species' endemism to the north and north-western flanks of the SNSM, any potential threat occurring in this localised region could put the entire species at risk of extinction. Our estimated EOO qualifies the species as 'Endangered', and both our EOO and AOO are lower than the distribution size of 4,100 km<sup>2</sup> currently listed for the species (BirdLife International 2014).

Large areas of primary forest within the core of the species' range have been cleared and subject to fragmentation through the establishment of transient and perennial crops, with coffee plantations being the most extensive (Krabbe 2008, BirdLife International 2014). Despite this, primary forest and old secondary-growth areas maintain a certain degree of connectivity and it is unlikely that dispersal between populations is being severely limited by vegetation transformation. Most of the forest continuity within the foliage-gleaner's range is associated with the Sierra Nevada de Santa Marta National Park, which alone represents c.40% of the species' AOO (Figure 4). Previous assessments of potential threats to the species' conservation stated that the El Dorado Reserve was the only protected area represented within its distribution (Krabbe 2008), which clearly is not the case (see Figure 4). The El Dorado reserve and the El Congo biological station are small local reserves whose combined area is probably less than 2–3 km<sup>2</sup>. The importance of these reserves, however, lies in their location on the north-western corner of the species' projected AOO (near the Jirocasaca Reserve) where there is a lack of officially designated protected areas (see also BirdLife International 2014). The north-western and western flanks of the SNSM are currently under strong pressure from agricultural expansion (Fundación Pro Sierra Nevada de Santa Marta 1998), and almost all of the unprotected half of the species range is located there (Figures 3 and 4).

Defining an accurate threat category for the Santa Marta Foliage-gleaner would no doubt benefit from additional study of the species' range and habitat requirements but our results are a valuable quantitative contribution for a future and more robust re-assessment. We used different approximations to evaluate the distribution and population status of this SNSM endemic and our results share common ground: the Santa Marta Foliage-gleaner exhibits a more restricted elevational and geographical range than previous assessments have indicated, meaning that the spatial potential for spreading any possible risk is limited (IUCN 2011). Montane forests along the northern and north-western flanks of the SNSM continue to be transformed and the species is currently present at less than 10 localities (confirmed presence). Taken together, these facts, alongside our estimates for EOO, AOO and population size, strongly suggest that the species could soon be moved to a higher threat category.

It is clear that confirmation of the species' presence at a variety of localities and at higher elevations is necessary to improve our understanding of its distributional status. Having said that, extensive surveys on the north-eastern and north-western flanks of the SNSM during 2012 did not find birds within an appropriate altitudinal range (CAP pers. obs.). Further, estimates of population density from other localities would greatly assist a more realistic assessment of its population size.

Perhaps the most urgent research need is to study the species' use of space and habitat selection, in order to quantify its habitat requirements and accurately assess its tolerance to vegetation transformation. The Santa Marta Foliage-gleaner is thought to be relatively tolerant to habitat degradation (Krabbe 2008, BirdLife International 2014), but this is also the case for other threatened SNSM endemics that despite such apparent tolerance, are still being severely affected by forest fragmentation and the loss of connectivity between forest patches at a landscape scale (e.g. Santa Marta Parakeet *Pyrrhura viridicata* and Santa Marta Bush-tyrant *Myiotheretes pernix*; Botero-Delgadillo *et al.* 2012, Botero-Delgadillo and Olaciregui in press). Other research needs include long-term monitoring programmes capable of tracking the population dynamics of this species and other SNSM endemics (BirdLife International 2014), and also for estimating rates of landscape transformation within the Foliage-gleaner's range. Finally, immediate conservation actions should target the creation of protected areas or management strategies that protect forests within the western portion of the species range and aim to maintain connectivity between existing forest fragments.

## Supplementary Material

The supplementary materials for this article can be found at [journals.cambridge.org/bci](http://journals.cambridge.org/bci)

## Acknowledgements

We want to thank Claudia and Mickey Weber for providing accommodation and logistical support at Hacienda La Victoria in the Gaira watershed. We also thank Santiago Giraldo for his logistical support during fieldwork at the Buritaca watershed. We thank Hernán Arias for undertaking fieldwork in the Buritaca watershed. The associate editor and one anonymous reviewer provided valuable comments on the manuscript. Variable distance transects were carried out in the watershed of the Gaira river and the San Lorenzo ridge as part of the SELVA project 'Crossing the Caribbean' financed by the Rufford Small Grants Foundation, Cornell Lab of Ornithology and Environment Canada. Records in the Buritaca watershed were collected under the project "Biodiversity of the Buritaca watershed" financed by FIAAT. Fundación ProSierra and the Department of Biology, Universidad de Los Andes supported PCP-R during field trips to "El Congo" biological station on the north-west flank of the SNSM.

## References

- Andersson, R. P., Lew, D. and Peterson, A. T. (2002) Geographical distribution of spiny pocket mice in South America: Insights from predictive models. *Glob. Ecol. Biogeogr.* 11: 131–141.
- Bangs, O. (1898) On some birds of Pueblo Viejo, Colombia. *Proc. Biol. Soc. Washington* 12:157–160.
- BirdLife International (2014) Species factsheet: *Automolus rufipectus*. <http://www.birdlife.org>. Downloaded 13 January 2014.
- Botero-Delgadillo, E., Páez, C. A. and Verhelst, J. C. (2012) Distribución geográfica y ecológica, tamaño poblacional y vacíos de conservación del Periquito de Santa Marta (*Pyrrhura viridicata*). *Ornitol. Col.* 12: 32–46.
- Botero-Delgadillo, E. and Olaciregui, C. (In press) *Myiotheretes pernix*. In L. M. Renjifo, A. M. Amaya-Villarreal, J. Burbano-Girón and J. Velásquez-Tibatá, eds. *Libro rojo de aves de Colombia, Vol. II: especies acuáticas de ecosistemas abiertos y secos, tierras altas del Darién, Sierra Nevada de Santa Marta e insulares*. Bogotá D.C.: Editorial Pontificia Universidad Javeriana e Instituto de investigación de Recursos Biológicos Alexander von Humboldt.
- Cadena, C. D., Klicka, J. and Ricklefs, R. E. (2007) Evolutionary differentiation in the Neotropical montane region: molecular phylogenetics and phylogeography of Buarremon brush-finches (Aves: Emberizidae). *Mol. Phyl. Evol.* 44: 993–1016.
- Caro, L. M., Caycedo-Rosales, P. C., Bowie, R. C. K, Slabbekoorn, H. and Cadena, C. D. (2013) Ecological speciation along an elevational

- gradient in a tropical passerine bird? *J. Evol. Biol.* 26: 357–374.
- Chapman, A. D. (2005) *Principles of data quality: version 1.0*. Report of the Global Biodiversity Information Facility. Copenhagen: Global Biodiversity Information Facility.
- Claramunt, S., Derryberry, E. P., Cadena, C. D., Cuervo, A. M., Sanín, C. and Brumfield, R. T. (2013) Phylogeny and classification of *Automolus* foliage-gleaners and allies (Furnariidae). *Condor* 115: 375–385.
- Cory, C. B. and Hellmayr, C. E. (1925) Catalogue of birds of the Americas and the adjacent islands. Part 4. *Field Mus. Nat. Hist., Zool. Ser.* 13: 1–369.
- Dormann, C. F. (2007) Promising the future? Global change projections of species distributions. *Basic. Appl. Ecol.* 8: 387–397.
- Efron, B. (1987) *The jackknife, the bootstrap, and other resampling plans*. Philadelphia: Society for Industrial and Applied Mathematics.
- Elith, J., Phillips, S. J., Hastie, T., Dudík, M., Chee, Y. E. and Yates, C. J. (2011) A statistical explanation of MaxEnt for ecologists. *Diversity Distrib.* 17: 43–57.
- ESRI (2008) *ArcGIS, version 9.3 for Windows*. Redlands, California: Environmental Systems Research Institute.
- Fielding, A. H. and Bell, J. F. (1997) A review of methods for the assessment of prediction errors in conservation presence/absence models. *Environ. Conserv.* 24: 38–49.
- Fundación Pro Sierra Nevada de Santa Marta (1998) *Evaluación ecológica rápida de la Sierra Nevada de Santa Marta*. Santa Marta, Colombia: Ministerio del Medio Ambiente, UAESPNN, The Nature Conservancy, USAID, Embajada de Japón.
- Hastie, T., Tibshinari, R. and Friedman, J. (2001) *The elements of statistical learning: Data mining, inference, and prediction*. New York: Springer.
- Hidalgo-Mihart, M. G., Cantú-Salazar, L., González-Romero, A. and López-González, C. A. (2004). Historical and present distribution of coyote (*Canis latrans*) in Mexico and Central America. *J. Biogeogr.* 31: 2025–2038.
- Holdridge, L. R. (1963) *Life zone ecology*. San José, Costa Rica: Tropical Science Center.
- Hothorn, T., Hornik, K., van de Vel, M. A. and Zeileis, A. (2008) Implementing a class of permutation tests: The coin package. *J. Stat. Softw.* 28: 1–23.
- Iguchi, K., Matsuura, K., McNyset, K., Peterson, A. T., Scachetti-Pereira, R., Powers, K. A., Vieglais, D. A., Wileys, E. O. and Yodo, T. (2004) Predicting invasions of North American basses in Japan using native range data and a genetic algorithm. *Trans. Am. Fish. Soc.* 133: 845–854.
- Isler, M. L., Cuervo, A. M., Bravo, G. A. and Brumfield, R. T. (2012) An integrative approach to species-level systematics reveals the depth of diversification in an Andean thamnophilid, the Long-tailed Antbird. *Condor* 114: 571–583.
- IUCN (2011) *Guidelines for using the IUCN Red List categories and criteria: version 9.0*. IUCN Standards and petitions subcommittee. <http://www.iucnredlist.org/documents/RedListGuidelines.pdf>. Downloaded 20 July 2013.
- Krabbe, N. (2008) Vocal evidence for restitution of species rank to a Santa Marta endemic: *Automolus rufipectus* Bangs (Furnariidae), with comments on its generic affinities. *Bull. Brit. Ornithol. Club* 128: 219–227.
- Krebs, C. (1989) *Ecological methodology*. New York: Harper Collins Publishers.
- Marques, F. F. C. and Buckland, S. T. (2003) Incorporating covariates into standard line transect analyses. *Biometrics* 59: 924–35.
- Marques, T. A., Thomas, L., Fancy, S. G. and Buckland, S. T. (2007) Improving estimates of bird density using multiple-covariate distance sampling. *Auk* 124: 1229–1243.
- Payevsky, V. A. and Shapoval, A. P. (2000) Age structure of Passerine populations according to ringing results. *Avian Ecol. Behav.* 4: 55–66.
- Pearson, R. G., Raxworthy, C. J., Nakamura, M. and Peterson, A. T. (2007) Predicting species distributions from small numbers of occurrence records: a test case using cryptic geckos in Madagascar. *J. Biogeogr.* 34: 102–117.
- Peterson, A. T. (2007) Why not why where: The need for more complex models of simpler environmental spaces. *Ecol. Modell.* 203: 527–530.
- Peterson, A. T., Soberón, J., Pearson, R. G., Anderson, R. P., Martínez-Meyer, E., Nakamura, M. and Araújo, M. B. (2011). *Ecological niches and geographic distributions*.

- Princeton, NJ: Princeton University Press. (Monographs in population biology no. 49).
- Phillips, S. J. (2010) *Maxent software for species habitat modeling: version 3.3.3*. <http://www.cs.princeton.edu/~schapire/maxent/>.
- Phillips, S. J. and Dudík, M. (2008) Modeling of species distributions with Maxent: new extensions and a comprehensive evaluation. *Ecography* 31: 161–175.
- Pigot, A. L. and Tobias, J. A. (2013) Species interactions constrain geographic range expansion over evolutionary time. *Ecol. Lett.* 16: 330–338.
- Remsen, J. V. (2003) Family Furnariidae (Ovenbirds). Pp. 162–357 in J. del Hoyo, A. Elliott and D. A. Christie, eds. *Handbook of the birds of the world, volume 8: Broadbills to tapaculos*. Barcelona: Lynx Edicions.
- Remsen, J. V., Cadena, C. D., Jaramillo, A., Nores, M., Pacheco, J. F., Pérez-Emán, J., Robbins, M. B., Stiles, F. G., Stotz, D. F. and Zimmer, K. J. (2014) *A classification of the bird species of South America*. American Ornithologists' Union. <http://www.museum.lsu.edu/~Remsen/SACCBaseline.html>. Accessed 16 January 2014.
- Renjifo, L. M., Franco, A. M., Amaya, J. M., Kattán, G. H. and López-Lanús, B. (2002) *Libro rojo de aves de Colombia*. Bogotá D.C.: Instituto de Investigación de Recursos Biológicos Alexander von Humboldt, Ministerio del Medio Ambiente.
- Strewe, R. and Navarro, C. (2004a) New and noteworthy records of birds from the Sierra Nevada de Santa Marta region, north-eastern Colombia. *Bull. Brit. Ornithol. Club* 124: 38–51.
- Strewe, R. and Navarro, C. (2004b) The threatened birds of the río Frío Valley, Sierra Nevada de Santa Marta, Colombia. *Cotinga* 22: 47–55.
- Terborgh, J. (1971) Distribution on environmental gradients: Theory and a preliminary interpretation of distributional patterns in the avifauna of the cordillera Vilcabamba, Peru. *Ecology* 52: 23–40.
- Terborgh, J. (1977) Bird species diversity on an Andean elevational gradient. *Ecology* 58: 1007–1019.
- Thomas, L., Buckland, S. T., Rexstad, E. A., Laake, J. L., Strindberg, S., Hedley, S. L., Bishop, J. R., Marques, T. A. and Burnham, K. P. (2010) Distance software: design and analysis of distance sampling surveys for estimating population size. *J. Appl. Ecol.* 47: 5–14.
- Todd, W. E. and Carriker, M. A. (1922) The birds of the Santa Marta region of Colombia: a study in altitudinal distribution. *Ann. Carnegie Mus.* 14: 3–582.
- Vásquez-V., V. H. and Serrano-G., M. A. (2009) *Las áreas naturales protegidas de Colombia*. Bogotá: Conservación Internacional-Colombia, Fundación Biocolombia.
- Warren, D. L., Glor, R. E. and Turelli, M. (2010) ENMTools: a toolbox for comparative studies of environmental niche models. *Ecography* 33: 607–611.
- Wysocki, D. (2004) Age structure of urban population of Blackbird (*Turdus merula*) in Szczecin (NW Poland). *Zool. Poloniae* 49: 219–227.

ESTEBAN BOTERO-DELGADILLO\*<sup>1,2</sup>, NICHOLAS BAYLY<sup>1</sup>, CARLOS ANDRÉS PÁEZ<sup>1</sup>, CAMILA GÓMEZ<sup>1,3</sup>, PAULO C. PULGARÍN-R<sup>3</sup>

<sup>1</sup>SELVA: Investigación para la Conservación en el Neotrópico, Bogotá, Colombia.

<sup>2</sup>Instituto de Ecología y Biodiversidad, Departamento de Ciencias Ecológicas, Facultad de Ciencias, Universidad de Chile, Santiago, Chile.

<sup>3</sup>Laboratorio de Biología Evolutiva de Vertebrados, Universidad de los Andes, Bogotá, Colombia.

\*Author for correspondence; e-mail: [esteban.botero@selva.org.co](mailto:esteban.botero@selva.org.co)