



ELSEVIER

Contents lists available at ScienceDirect

International Journal of Adhesion & Adhesives

journal homepage: www.elsevier.com/locate/ijadhadh

Repair bond strength of dental composites: systematic review and meta-analysis

Lisia L. Valente^a, Rafael Sarkis-Onofre^a, Ana P. Gonçalves^a, Eduardo Fernández^b, Bas Loomans^c, Rafael R. Moraes^{a,*}^a Graduate Program in Dentistry, Federal University of Pelotas, Brazil^b Faculty of Dentistry, University of Chile, Chile^c Radboud University Medical Center, Radboud Institute for Molecular Life Sciences, Department of Dentistry, Nijmegen, The Netherlands

ARTICLE INFO

Available online 21 March 2016

Keywords:

A: methacrylate functional silane

B: resin-based composites

C: surface treatment

D: aging

ABSTRACT

This study investigated by means of a systematic review of the literature and meta-analysis the impact of physical and/or chemical surface treatments on the repair bond strength of methacrylate-based dental composites. Three international databases (Medline/PubMed, Scopus, and Web of Science) were searched. Studies that evaluated the repair bond strength of aged control composites (untreated or treated with abrasives) and aged composites subjected to surface treatments before repair (physical, chemical, or physical + chemical) were included. In total, 777 articles were found, 129 were selected for full-text reading, and 15 studies were included in the qualitative and quantitative synthesis. Meta-analyses were conducted using random effects model to calculate pooled mean differences between control and treated composites, according to the different groups of surface treatments. Statistical heterogeneity was assessed using the Cochrane Q statistic and I^2 test. Risk of bias of all included studies was assessed. Application of chemical or physical + chemical surface treatments of aged composites was shown to generally improve their repair bond strengths. Silane coupling agents appeared to have a minor role as compared to adhesive agents in improving repair potential. Airborne-particle abrasion alone was found not to contribute significantly to the repair bond strengths. High heterogeneity was observed in most statistical analyses; the analysis of risk of bias also indicated potential problems associated with reporting in the studies. Therefore, suggestions for future *in vitro* studies on the repair bond strength of dental composites are given.

© 2016 Elsevier Ltd. All rights reserved.

Contents

1. Introduction	16
2. Materials and methods	16
2.1. Search strategy and study selection	16
2.2. Eligibility criteria	16
2.3. Data collection	17
2.4. Data analysis	17
2.5. Assessment of risk of bias	17
3. Results and discussion	17
3.1. Overall results	19
3.2. Aging composites before repair	19
3.3. Physical treatments	22
3.4. Chemical treatments	23
3.5. Physical + chemical treatments	23
3.6. Final remarks	24

* Correspondence to: School of Dentistry, Federal University of Pelotas, Rua Gonçalves Chaves 457, room 505 96015-560, Pelotas-RS, Brazil.

Tel./fax: +55 53 3225 6741 x.135.

E-mail address: moraesrr@gmail.com (R.R. Moraes).

4. Conclusion	24
Appendix	24
References	24

1. Introduction

Resin-based dental composites are the materials of choice for restoring anterior and posterior teeth. The annual failure rates of anterior and posterior composite restorations commonly vary between 1% and 4% [1–3]. Patient characteristics, professional technique and experience, and material selection are factors known to potentially affect the clinical performance of dental restorations [4]. Restorations in patients with higher risk for caries lesions or occlusal stresses, for instance, are expected to show increased failure rates [5,6].

In case of composite restoration failures, the dentist has three main options to deal with the defective restoration: to refurbish, repair, or replace the composite [7–9]. Refurbishing means that no material or dental structure will be removed and additional restorative material will be added to fix the restoration: refinishing and repolishing are carried out to improve anatomy and surface properties. Repair is a procedure that involves partial removal of the defective part of the restorative, which is then repaired with new material to complete the restoration. In contrast to refurbishing and repairing, which might be considered more conservative approaches [9], replacing a restoration involves complete removal of the restorative (even portions that might appear clinically acceptable) for placement of new material. In this approach, it is virtually impossible to avoid removal of sound tooth structure during cavity preparation [10], increasing the risk of pulp injury, tooth fracture, and even need for endodontic treatment.

Studies have shown that composite repairs might improve the clinical longevity of dental restorations [7,9,11,12]. However, there is no gold standard protocol or materials established for treating the aged composite surfaces before repair. Despite the fact that surface treatments before repair are not the focus of clinical studies, the literature is abundant with laboratory evidences on different approaches to improve the repair potential of composites. These studies usually include evaluation of physical, chemical, or association between physical and chemical treatments of the composite seeking improved repair bonding. Physical treatments have the ultimate goal to improve mechanical keying between the aged and new (repair) composite, whereas chemical agents are applied in an endeavor to improve chemical coupling between resin-based materials at the adhesive interface.

The high variability of materials, techniques, and testing methods used in laboratory investigations regarding surface treatments of dental composites before repair sometimes hinder comparisons among studies. Summarization of *in vitro* findings, associated with an overall analysis of variables affecting the repair potential, might help elucidating whether physically or chemically treating the composites surfaces before repair is valuable. Therefore, this study was designed to evaluate by means of a systematic review of the literature and meta-analysis the impact of physical and/or chemical surface treatments on the repair bond strength of methacrylate-based dental resin composites.

2. Materials and methods

This systematic review was carried out according to the guidelines of Cochrane Handbook for Systematic Reviews of Interventions [13], following the four-phase flow diagram of the

Preferred Reporting Items for Systematic Reviews and Meta-Analyses (PRISMA) Statement [14]. This report is based on the PRISMA Statement.

2.1. Search strategy and study selection

Studies written in English were identified in three international databases: Medline/PubMed, Scopus, and Web of Science. The last search was carried out in September 2015 with no date restriction. The following search strategy was used: composite* AND repair* AND (bond* OR adhes*) AND dent*. Literature search results were de-duplicated using EndNote X7 software (Thomson Reuters, New York, NY, USA). The titles of all identified studies were screened by two independent reviewers (L.L.V and R.S.O). Abstracts were carefully appraised when the title indicated inclusion. Articles considered eligible for the review (or in case of doubt) were selected for full-text reading. The total number of full-text articles for reading was divided in two halves and screened by two pairs of independent reviewers (L.L.V and R.S.O; A.P.G. and R.R.M.). Discrepancies were resolved by group discussion. References of all included studies were also hand-searched for additional studies.

2.2. Eligibility criteria

In vitro studies that compared the repair bond strength of direct or indirect methacrylate-based resin composites were selected. For inclusion, composites should have been stored for at least one day in water before testing. Although 24 h storage in water may not actually age the composite, there is no consensus in the dental literature as regards the minimum time of water storage required to properly age dental composites. The 24 h storage was set as minimum time in order to exclude studies that did not store at all the composites in water before testing. In addition, the study should have reported the repair bond strength of composites after use of at least one physical and/or chemical surface treatment compared to a control group. As control group, the composite surface could have been left untreated or ground with dental burs, SiC abrasive papers, or similar abrasives. Grinding was considered an adequate control since intraorally the composite surfaces are usually finished with burs before repair. Abrasive papers were included as acceptable grinding treatment because their granulometry resembles the granulometry of diamond burs.

When more than one possible control was reported in the study (e.g. untreated composite and composite ground with burs), grinding was selected as the control group. Application of phosphoric acid in the control surfaces was not a reason for exclusion. The following were reasons for exclusion: articles that evaluated composites not based on methacrylate technology (e.g. silorane or ormocer), absence of composite aging or storage in dry conditions before the repair (including the control group), and use of unusual bond strength test (e.g. transverse strength). When all groups of a given investigation were submitted to a common surface treatment (e.g. all specimens were air-abraded or silanated), this study was also excluded due the absence of an appropriate untreated (or only ground) control group.

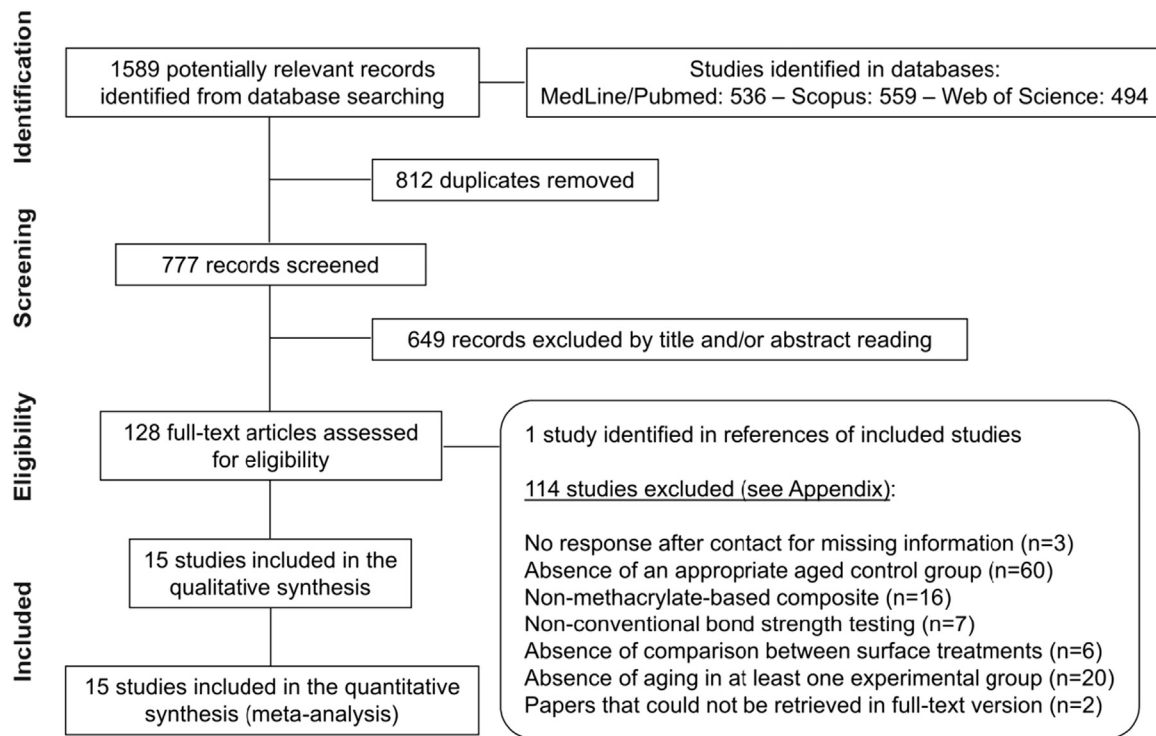


Fig.1. Flowchart of the systematic review.

2.3. Data collection

A standard outline was used for data extraction based on the characteristics of studies and groups tested: composite type (e.g. hybrid, microfilled, nanofilled), aging method and time, bond strength test, and surface treatments tested. The surface treatments were separated in physical treatments (airborne-particle abrasion or hydrofluoric acid-etching), chemical treatments (silane, adhesive, or silane + adhesive), or physical + chemical treatments (combination of physical with one or more chemical treatments). Hydrofluoric acid-etching with was classified a physical treatment because its main effect on composite is the creation of surface roughness. Repair bond strength means, standard deviations, and sample sizes were extracted for all groups of interest.

When the study evaluated more than one composite or more than one storage type, for instance, data were extracted individually for each composite and storage time tested. Cohesive strengths of unrepaired, non-aged composites were also extracted when available. Authors of studies were contacted in case of missing data (e.g. data provided in graphs); these studies were only included if the authors provided the missing information. When the study had more than one group for a same treatment (e.g. three adhesives brands) but only one control group, data for only of the experimental groups were extracted. Selection of only one experimental group was necessary to avoid overestimation of results if several similar treatments were compared against a single control group. When necessary, experimental group selection considered the treatment most commonly used in the clinical setup (e.g. two-step, etch-and-rinse adhesive over a two-step, self-etch adhesive). Data extraction was carried out by consensus among the four researchers conducting the extraction.

2.4. Data analysis

Characteristics of studies were summarized descriptively. When sufficient data were available, a meta-analysis was

conducted using random effects model to calculate pooled mean differences between control composite and composite subjected to a given surface treatment. Within each different surface treatment approach (physical, chemical, and physical + chemical), subgroups were created and a separate analysis was carried out considering distinct treatments (e.g. silane, adhesive, and silane + adhesive for chemical methods). Bond strength data extracted were restricted to those from studies in which surface treatments were compared under same conditions and when a pairwise comparison was available. All summary estimates were reported with point estimates and corresponding 95% confidence intervals (CIs). Statistical heterogeneity was assessed using the Cochrane Q statistic and I^2 test ($> 75\%$ indicates high heterogeneity) [13]. The analyses were conducted using Review Manager 5.3 software (Copenhagen: The Nordic Cochrane Centre, The Cochrane Collaboration, 2014).

2.5. Assessment of risk of bias

The risk of bias of all included studies was assessed based on The Cochrane Collaboration's tool for assessing risk of bias [15] and previous studies [16,17]. The following parameters were considered: randomization of specimens, materials used according to manufacturers' instructions, sample size calculation, blinding of the operator of the testing machine, and use of storage method able to age the composite before repair. Each item was judged as having high, low, or unclear risk of bias according to the report in each article. The parameters used were discussed by the researchers involved and judgment was carried out by group discussion. Assessment of risk of bias was conducted using Review Manager 5.3 software.

3. Results and discussion

The flowchart of the systematic review is shown in Fig. 1. After screening 777 unique titles and 128 full-text articles, 14 studies

Table 1
Data extracted from the studies included in the systematic review.

Author, Year	Aged composite type (commercial name)	Aging method before repair	Aging time	Bond strength test	Surface treatment - Type	Surface treatment - Groups	Bond strength, MPa	SD	N
Al Musa and Al Nahedh, 2014 [18]	Hybrid (Aelite LS Posterior)	Water	4 weeks	Shear	Control	None	14.1	4.5	12
						Cohesive strength (non-aged)	14.9	2.3	12
Bacchi et al., 2013 [19]	Microhybrid (Filtek P60)	Water at 37 °C	6 months	Tensile	Chemical	Adhesive	16.2	4.8	12
					Control	Abrasive	5.6	2.3	10
					Chemical	Adhesive	16.7	5.7	10
					Physical + chemical	Silane + adhesive	16.2	6.0	10
						Air abrasion + adhesive	19.4	5.2	10
						Air abrasion + silane + adhesive	18.7	3.6	10
Bouschlicher et al., 1997 [20]	Microfill (Silux Plus)	Water at 37 °C	24 h	Shear	Control	Abrasive	9.9	2.9	10
					Physical	Air abrasion	10.1	2.4	10
					Chemical	Silane	13.6	2.6	10
	Hybrid (Pertac Hybrid)	Water at 37 °C	24 h	Shear	Physical + chemical	Air abrasion + silane	10.5	1.8	10
					Control	Abrasive	9.7	2.8	10
					Physical	Air abrasion	6.6	2.3	10
Chemical	Silane	10.5	3.1	10					
Physical + chemical	Air abrasion + silane	12.8	4.8	10					
Brosh et al., 1997 [21]	Hybrid (Pertac Hybrid)	Water at 37 °C	14 days	Shear	Control	Abrasive	7.9	2.9	20
					Physical	Air abrasion	5.6	3.0	20
					Chemical	HF acid-etching	5.7	2.2	20
						Adhesive	8.0	2.5	20
						Silane + adhesive	9.1	2.5	20
					Physical + chemical	Air abrasion + adhesive	10.6	3.6	20
						Air abrasion + silane + adhesive	9.1	2.8	20
						HF acid-etching + adhesive	6.0	2.3	20
						HF acid-etching + silane + adhesive	6.4	2.2	20
					Cavalcanti et al., 2007 [22]	Microhybrid (TPH Spectrum)	Water at 37 °C	24 h	Microtensile
Physical	Cohesive strength (non-aged)	43.8	7.2	10					
	Air abrasion	33.3	12.5	10					
Chemical	Adhesive	31.7	4.0	10					
Physical + chemical	Air abrasion + adhesive	33.8	7.1	10					
	Control	Abrasive	18.1	5.1					
Eli et al., 1988 [32]	Hybrid (P30)	Human saliva at 37 °C	48 h	Shear/Tensile	Control	Abrasive	21.7	6.4	20
						Cohesive strength (non-aged)	36.4	5.9	20
					Chemical	Adhesive	27.9	6.2	20
						Adhesive	26.0	9.3	20
						Abrasive	15.5	4.2	20
	Hybrid (Visiofil)	Human saliva at 37 °C	48 h	Shear/Tensile	Control	Abrasive	20.0	8.3	20
						Cohesive strength (non-aged)	39.8	0.7	20
					Chemical	Adhesive	28.2	7.4	20
						Adhesive	24.9	7.7	20
						None	2.9	1.1	8
Fawzy et al., 2008 [23]	Microhybrid (Gradia Anterior)	Water at 37 °C	30 days	Microtensile	Control	Cohesive strength (non-aged)	18.8	4.5	8
					Chemical	Adhesive	4.0	1.0	8
						Silane + adhesive	6.7	1.4	8
						Adhesive	29.7	9.3	27
Hamano et al., 2011 [24]	Microhybrid (Ceram●X Duo)	Boiling water	24 h	Microtensile	Control	Cohesive strength (non-aged)	43.4	9.5	26
						Chemical	Silane	27.4	9.9
					Adhesive	29.9	14.0	25	
					Silane + adhesive	29.4	11.1	28	
					Abrasive	30.5	8.8	25	
				Microtensile (after TC)	Control	Silane	33.2	10.3	25
					Chemical	Adhesive	30.5	11.6	27
					Silane + adhesive	32.1	9.6	33	
					Abrasive	9.4	4.4	12	
					Cohesive strength (non-aged)	11.3	3.3	12	
Imbery et al., 2014 [25]	Nanofill (Filtek Supreme Ultra)	Water at 37 °C	7 days	Shear	Control	Adhesive	17.4	3.5	12
					Chemical	Silane + adhesive	10.6	8.4	12

Table 1 (continued)

Author, Year	Aged composite type (commercial name)	Aging method before repair	Aging time	Bond strength test	Surface treatment - Type	Surface treatment - Groups	Bond strength. MPa	SD	N
Jafarzadeh Kashi et al., 2011 [26]	Microhybrid (Clearfil AP-X)	Water at 37 °C	3 weeks	Shear (7 days)	Control	None	3.4	1.6	15
					Chemical	Adhesive	27.3	1.8	15
				Shear (6 months)	Control	Silane + adhesive	59.1	7.9	15
					Chemical	None	1.0	0.8	15
Kaneko et al., 2015 [27]	Microhybrid (Filtek P60)	Water at 37 °C	10 days	Tensile	Control	Adhesive	25.7	1.9	15
						Silane + adhesive	50.8	4.6	15
						Abrasive paper	3.8	0.9	10
				Chemical	Cohesive strength (non-aged)	60.9	16.7	10	
					Adhesive	18.0	6.8	10	
					Silane + adhesive	15.1	5.3	10	
Physical + chemical	Air abrasion + adhesive	24.2	7.9	10					
	Air abrasion + silane + adhesive	28.4	7.0	10					
	Abrasive	11.4	3.2	8					
Öztas et al., 2003 [28]	Microhybrid (Charisma)	TC	300 cycles	Shear	Control	Air abrasion	18.2	3.2	8
					Physical	Adhesive	12.8	5.4	8
					Chemical	Air abrasion + adhesive	23.2	5.2	8
					Physical + chemical	Control	Abrasive	21.3	5.0
Rathke et al., 2009 [29]	Microhybrid (TPH Spectrum)	Sodium chloride solution at 37 °C	24 h	Tensile	Physical	Air abrasion	19.5	2.9	10
					Chemical	Adhesive	22.7	2.6	10
					Physical + chemical	Air abrasion + adhesive	22.4	4.3	10
						Air abrasion + silane + adhesive	26.7	2.0	10
			6 months	Tensile	Control	Abrasive	15.8	4.0	10
					Physical	Air abrasion	16.6	6.1	10
					Chemical	Adhesive	23.3	2.9	10
					Physical + chemical	Air abrasion + adhesive	23.4	3.9	10
Shahdad and Kennedy, 1998 [30]	Microfill (Helio Progress)	Water at room temperature	24 h	Shear	Control	Air abrasion + silane + adhesive	24.6	4.7	10
						Abrasive	22.7	3.8	12
					Chemical	Abrasive	24.4	3.7	12
						Cohesive strength (non-aged)	28.7	4.8	12
Tezvergil et al., 2003 [31]	Microhybrid (Filtek Z250)	Boiling water + water at 37 °C	8 h + 3 weeks	Shear (water)	Control	Adhesive	23.9	2.5	12
					Chemical	Adhesive	27.5	4.2	12
						Abrasive	17.8	4.6	8
				Shear (after TC)	Chemical	Adhesive	35.7	7.1	8
						Silane + adhesive	44.7	6.1	8
					Control	Abrasive	17.1	2.3	8
	Chemical	Adhesive	33.4	7.2	8				
		Silane + adhesive	42.4	8.4	8				

TC: thermal cycling; SD: standard deviation.

[18–31] were initially included and one extra study [32] was added from the reference lists, whereas 114 studies (see Appendix) were excluded for reasons reported in Fig. 1. Approximately 70% of the studies excluded did not present what was considered here as appropriate aged control or experimental groups, meaning that comparisons between aged control composites and aged composites subjected to surface treatments before repair were not feasible.

3.1. Overall results

Characteristics of the included studies and extracted data can be seen in Table 1. Most studies (82.4%) tested (micro)hybrid materials as aged composites to be repaired. The repair bond strength test most commonly used was (micro)shear test (60%), followed by (micro)tensile test (33.3%); one study reported the use of a bond strength test combining shear and tensile stresses. Results for the judgment of risk of bias in the studies included are presented in Fig. 2. Whereas randomization of specimens was

carried out in the majority of studies, less than 50% of the studies reported that materials were used according to the manufacturers' instructions. Sample size calculation or blinding of the operator of the testing machine were either reported in few studies or not reported at all. Approximately 25% of the studies included in this systematic review employed methods for aging the composites that were considered of high risk of bias, i.e., perhaps not able to age the composites.

3.2. Aging composites before repair

Static storage in water or similar media was the method most often used for aging the composites (82.4%), whereas only 17.6% of the comparisons reported here involved more complex aging methods, such as thermal cycling or boiling in water. In some cases, assessing the effect of storage periods before repair was actually the goal of the authors, and comparisons between storage for 24 h and longer periods were reported. Although there is no aging protocol indisputably considered gold standard for

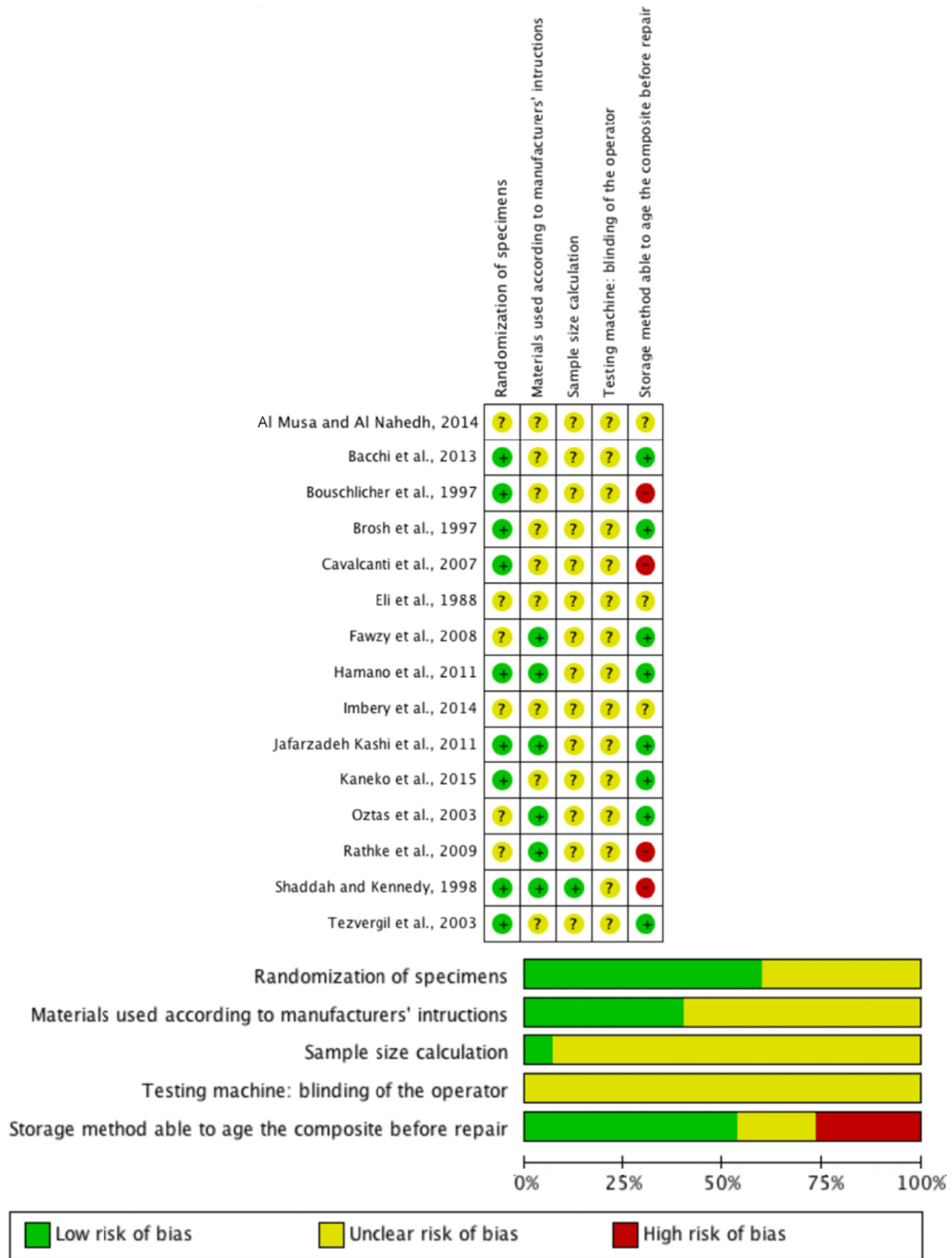


Fig. 2. Risk of bias analysis: authors' judgements on each item for each included study and proportion of studies with low, unclear, or high risk of bias for each item.

mimicking the aging that dental composites are subjected in the oral environment, it seems that many of the aging protocols used in the studies unlikely aged the composites properly. This assumption is reinforced when one analyzes the reported storage times before repair: 44.4% of studies stored the composites for up

to 48 h in water, whereas only 22.2% of the studies aged the composites in water for 30 days or longer.

Aging the composites properly before repair is crucial to investigate their repair potential in a setup that resembles the clinical environment. Although composite restorations sometimes show early clinical failures, these failures tend to be related to

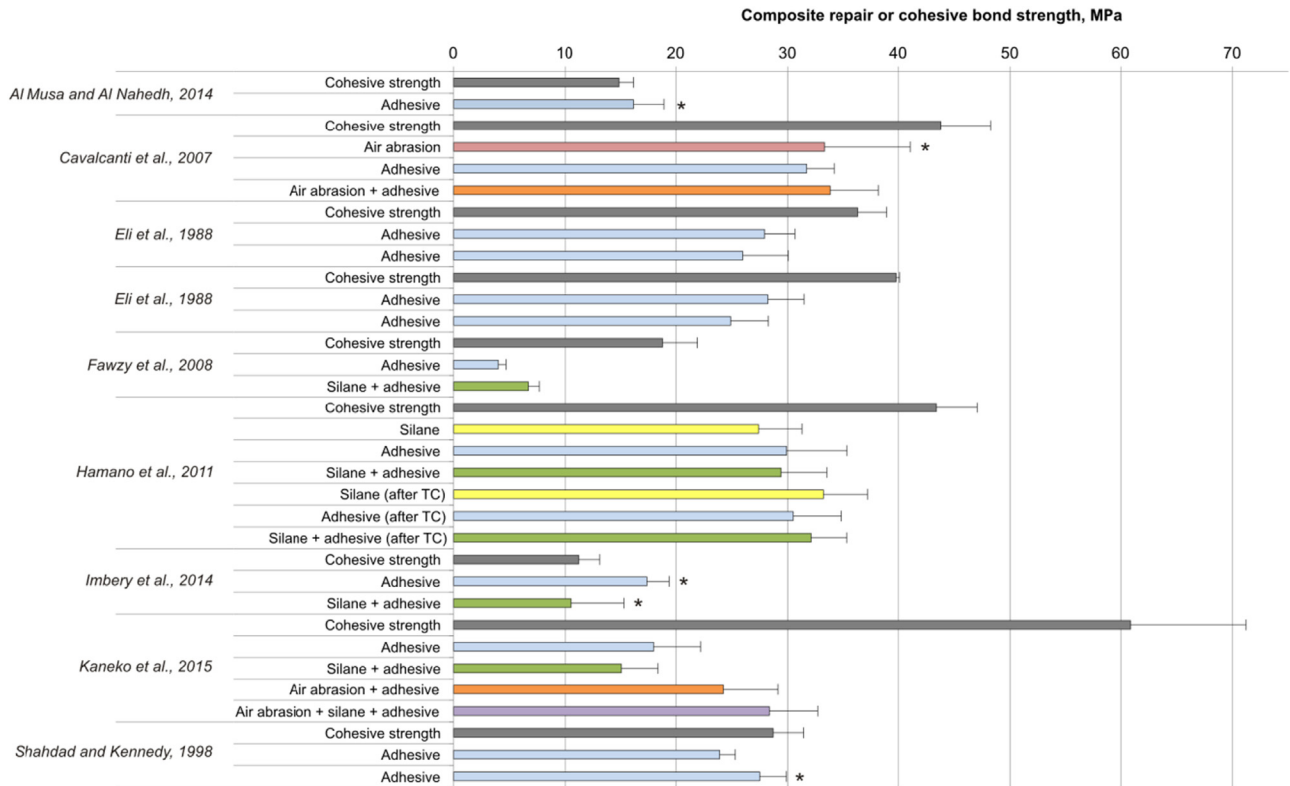


Fig. 3. Graph showing the comparisons between the cohesive strengths (gray bars) and repair bond strengths reported in each study (bars are means +95% confidence intervals). Asterisks indicate groups with repair bond strengths at least similar to the original cohesive strengths. Only studies reporting the cohesive strength of non-aged composites were included (studies were repeated when tested more than one composite). TC: thermal cycling.

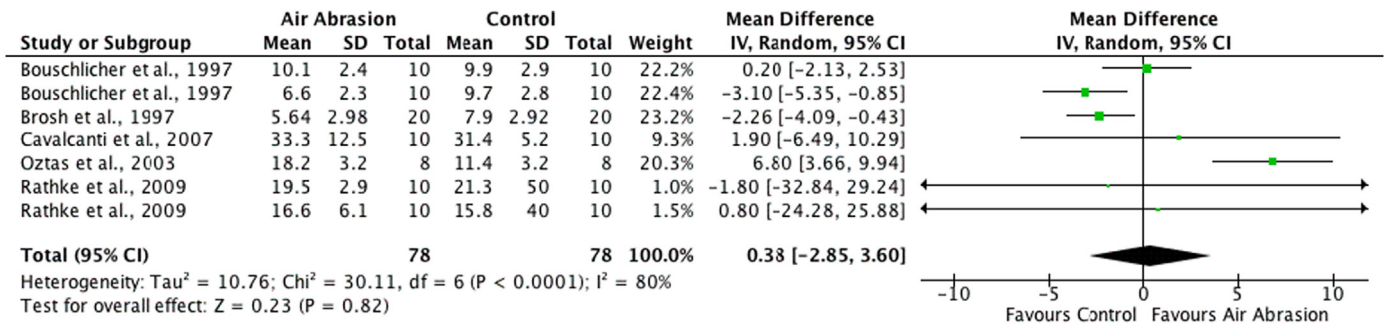


Fig. 4. Summary of findings of the meta-analysis comparing the repair bond strength of control composites and composites subjected to physical surface treatments before repair. Air abrasion was included as only physical treatment as few comparisons were available for other methods (e.g. etching with hydrofluoric acid).

chipping or other minor fractures. In those situations, perhaps patients would not seek for immediate repair. Failures prone to be repaired, in contrast, are expected to happen in the medium or long term clinical service of restorations [3,4], when the composite is “old”. Recently-cured composites are more reactive than aged composites due to two main aspects. On one hand, free radicals and more importantly free monomers are still available in recently-cured materials [33], improving their ability to bond to the “new” composite upon repair. On the other hand, it takes time for hygroscopic and hydrolytic effects of water to take place within the 3D, cross-linked polymer structure [34]. Water absorption and polymer swelling are responsible for relaxing the physical bonds between polymer chains [34], allowing free monomers and inactive polymerization promoters to be eluted. With time, hydrolysis of polymer chains and filler-polymer interfaces may also occur [34], contributing to physical and chemical degradation of the restorative. In that scenario, when improper aging of the composite is present, the effect of surface treatments might be over or

underestimated *in vitro* due to the potentially good chemical coupling between materials at the bonded interface. However, to date there is no gold standard method for aging dental composites and simulating the quite complex oral conditions.

The cohesive strengths of non-aged composites, usually used as a reference value for the optimal repair bond strength of aged composites, were reported in approximately 53% of the studies. This low frequency of report is another concern. Application of physical and/or mechanical treatments to aged composites is carried out in an endeavor to reestablish the bonding potential of the degraded, low-reactive material. Although a comparison between untreated and treated aged surfaces is interesting to observe whether the applied treatment had a positive effect on the repair potential, the ultimate goal is to reestablish the original composite cohesive strength. Fig. 3 shows a comparison between the cohesive strengths and repair bond strengths reported in each study. It is noteworthy that only in 20.8% of the pairwise comparisons the applied surface treatments were able to yield bond strengths at least similar to the original composite

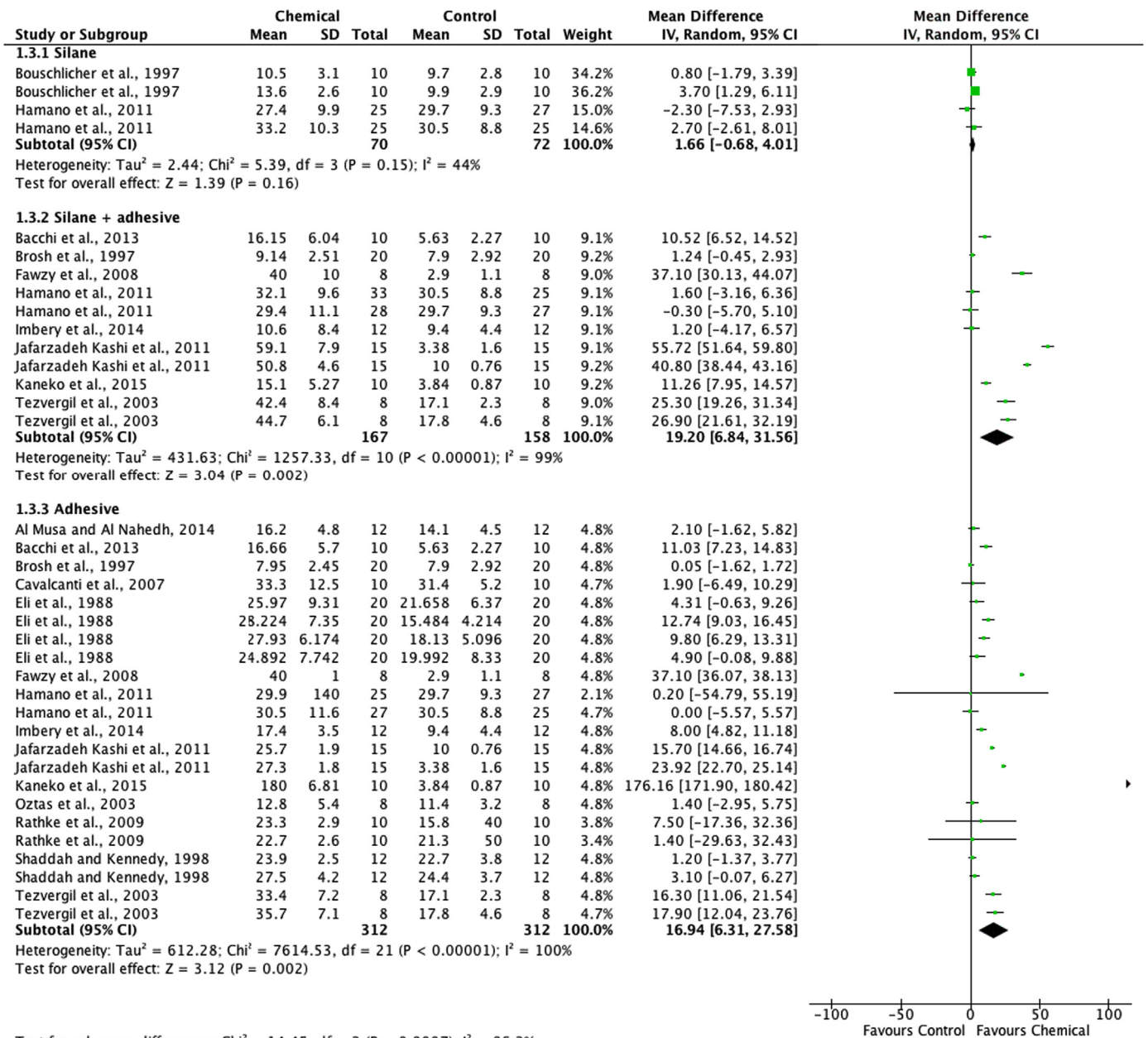


Fig. 5. Summary of findings of the meta-analysis comparing the repair bond strength of control composites and composites subjected to chemical surface treatments before repair.

cohesive strength. This reinforces the fact that aged composites are less reactive than fresh composites when it comes to interfacial composite-composite bonding ability. In addition, 80% of the positive results for surface treatments of aged composites generating similar repair potential to the cohesive strength came from studies that used short-term static storage in water (up to 7 days) as aging method. This means that the composites tested in those studies could be more reactive than it would be expected in the clinical situation of repairing dental restorations.

3.3. Physical treatments

Fig. 4 shows the results of the meta-analysis for the physical treatments alone vs. control groups. Few comparisons between hydrofluoric acid-etched composite and control composite were available; thus, comparisons were restricted to air abrasion as

physical treatment. The pooled effect indicated no significant differences ($p=0.82$) in repair bond strengths between air abraded and control surfaces, with effect size of 0.38 and 95% CI between -2.9 and 3.6. It should be pointed out that the heterogeneity among studies was high ($I^2=80%$) in this analysis. In addition, approximately 57% of the comparisons included in this analysis originated from studies that stored the composites in water for only 24 h before repair. This means that the results observed for air abrasion compared to control could be over or underestimated. Since the composites could still be reactive in those studies, air abrasion apparently seems to be able to reach almost original cohesive values. Therefore, care should be taken when analyzing the findings of this specific meta-analysis.

Other important aspects that most of the studies missed were the effects that particle type, air abrasion pressure and application time might have on the air abrasion outcome. Alumina particles

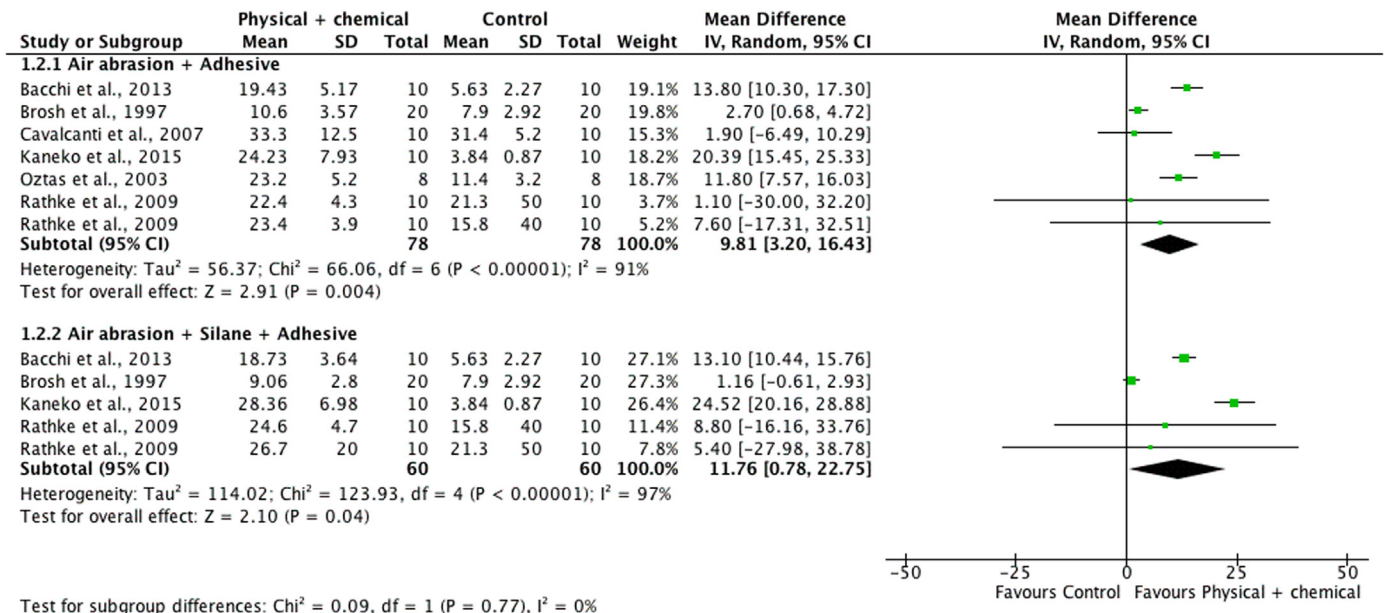


Fig. 6. Summary of findings of the meta-analysis comparing the repair bond strength of control composites and composites subjected to physical + chemical surface treatments before repair.

(usually 50 μm in size) were used 71.4% of the comparisons included in this analysis, with no report on the effect of abrasion pressure or time. Air abrasion is able to generate surface roughening on the aged composite by mechanical shocking of alumina particles, non-selectively removing portions of the polymer matrix and filler particles. Subsequently, mechanical retention occurs by interpenetration of the aged and fresh to form a bonded interphase. When silica-coated alumina particles are used in air abrasion, in addition to micromechanical retention, air abrasion is able to leave a silica-rich layer at the composite, which could additionally contribute to chemical coupling at the interface via subsequent silanization. Finally, the similar repair bond strengths between control and air-abraded surfaces could be explained by the formation of cracks at the surface and subsurface of composites subjected to air abrasion [35]. However, the formation of cracks occur mainly in brittle materials, which might present reduced mechanical strength after air abrasion. Nonetheless, it is usually expected that air abraded surfaces (or surfaces treated by other physical means) should be subsequently treated with a chemical coupling agent for improved repair potential.

3.4. Chemical treatments

Fig. 5 shows the results for the meta-analysis comparing chemical treatments of the composite and control groups. No significant effect was observed for silane applied alone (effect size: 1.7; 95% CI: -0.7, 4.0; $I^2=44\%$). This result can be explained by the fact that although silanes are able to improve the wetting of resin-based materials at the restorative surface, their chemical coupling with the composite depends upon the availability of silica at the surface (i.e., glass particles). In the conditions tested in the included studies, the silica content at the aged composite was probably not high since no physical treatment was applied before repair; thus, most glass filler particles are still coated by the polymer matrix and not prone to form siloxane bonds. The degradation of dental composites upon storage is also able to break filler-polymer bonds [34], allowing surface loss of glass particles. However, it should be highlighted that the number of studies included in the analysis was low.

In contrast, the analysis favored both application of adhesive alone (effect size: 16.9; 95% CI: 6.3, 27.6) and silane + adhesive (effect size: 19.2; 95% CI: 6.8, 31.6) as compared to the control ($p=0.002$; $I^2 \geq 99\%$). Considering the results for silane alone, it seems that the presence of an adhesive layer is the major variable playing a role in improving the repair potential of aged composites. The presence of an intermediate, low-viscosity layer of bonding agent improves the chemical bonds between the old and fresh materials, contributing to higher repair bond strengths. In addition, a recent study [36] showed that composites surfaces aged *in vitro* show superficial dissolution and increased surface roughness, which may contribute to mechanical entanglement of the adhesive, whereas the fresh composite is likely too viscous to infiltrate these irregularities. These results may be considered valuable for clinicians, since application of adhesive alone is simpler than combining silane + adhesive. In addition, it is already expected that clinicians will apply an adhesive system to all cavity preparation (including aged composite and dental structure) before repairs. However, it should be borne in mind that the effect of silane might be dependent on the type of composite involved in the repair, i.e. the positive effect of silane for composites different from those tested in the studies included here should not be ruled out. Also, most of current dental adhesive systems rely on the presence of MDP and other acidic methacrylate monomers that potentially may improve the composite repair bond strengths. Unfortunately, the data gathered in this systematic review was not sufficient to establish any comparison between MDP-containing adhesives vs. adhesives without MDP.

3.5. Physical + chemical treatments

The meta-analysis comparing the combination of physical and chemical treatments of the composites and control groups is shown in Fig. 6. As mentioned for the physical treatments alone, comparisons here were restricted to air abrasion as physical treatment because only a few comparisons for hydrofluoric acid-etching + a chemical treatment were available. In addition, combination of air abrasion was only possible with two chemical treatments: adhesive, and silane + adhesive. The analysis favored the combination of air abrasion with both adhesive (effect size: 9.8; 95% CI: 3.2, 16.4;

$p=0.004$; $I^2=91\%$) and silane + adhesive (effect size: 11.8; 95% CI: 0.8, 22.8; $p=0.04$; $I^2=97$). In contrast to the application of chemical agents alone, it seems that both silane coupling agents and adhesives play a role in improving the repair bond strengths when physical treatments are applied to the aged composite. These results are in line with a recent study [16] showing that physical treatment of glass-fiber posts, for instance, are necessary for proper action of silanes. The physical treatment is able to dissolve or remove the polymer matrix covering the glass fibers or particles, creating a proper scenario for silane coupling agents to interact with silica. For the adhesive agent, the increased surface roughness contributes to mechanical keying, improving the repair bond strengths.

3.6. Final remarks

Results of this systematic review provide evidence that chemical or physical + chemical treatments of aged composite surfaces may contribute to improve their repair bond strengths. High heterogeneity was observed in most statistical analyses carried out here; factors and variables contributing to this high heterogeneity are hard to identify considering that the studies included in the review have a high number of covariates involved. Potential problems associated with reporting were also indicated by the analysis of risk of bias; unfortunately, reporting problems are common in the *in vitro* literature. In addition, the present results may have been influenced by publication bias, as studies with negative results could not have been published. Therefore, it is suggested that *in vitro* studies on the repair bond strength of dental composites should include:

- Use of storage methods that could properly age dental composites, preferably including prolonged water storage at 37 °C (to simulate hydrolytic degradation) combined with mechanical or cyclic loading (to simulate mechanical degradation);
- A control group defined by no surface treatment of the aged composite, or alternatively treating the aged control surfaces only with abrasives (burs or SiC papers);
- A reference group testing the cohesive strength of non-aged composites;
- Use of restorative and bonding materials according to the manufacturer's instructions (or indicating why directions were altered), blinding the operator of the testing machine, estimation of sample size, and randomization of specimens, in order to reduce risk of bias associated with the methodology;
- Proper report of all variables that might interfere with the repair bond strength outcomes.

4. Conclusion

Application of chemical or physical + chemical surface treatments of aged dental composites seems beneficial for improving the repair bond strength of methacrylate-based restoratives. Silane coupling agents appear to have a minor role as compared to adhesive agents in improving the repair potential after composite roughening. Airborne-particle abrasion alone was found not to improve significantly to the repair bond strengths, but this result should be analyzed with caution since a great part originated from comparisons where the "old" composite was aged using short-term static water storage.

Appendix

Studies excluded from the systematic review (reasons reported in Fig. 1): [37–150].

References

- [1] Baldissera RA, Correa MB, Schuch HS, Collares K, Nascimento GG, Jardim PS, et al. Are there universal restorative composites for anterior and posterior teeth? *J Dent* 2013;41:1027–35.
- [2] Da Rosa Rodolpho PA, Donassollo TA, Cenci MS, Loguercio AD, Moraes RR, Bronkhorst EM, et al. 22-Year clinical evaluation of the performance of two posterior composites with different filler characteristics. *Dent Mater* 2011;27:955–63.
- [3] Demarco FF, Collares K, Coelho-de-Souza FH, Correa MB, Cenci MS, Moraes RR, et al. Anterior composite restorations: A systematic review on long-term survival and reasons for failure. *Dent Mater* 2015;31:1214–24.
- [4] Demarco FF, Correa MB, Cenci MS, Moraes RR, Opdam NJ. Longevity of posterior composite restorations: not only a matter of materials. *Dent Mater* 2012;28:87–101.
- [5] Opdam NJ, Bronkhorst EM, Loomans BA, Huysmans MC. 12-year survival of composite vs. amalgam restorations. *J Dent Res* 2010;89:1063–7.
- [6] van de Sande FH, Opdam NJ, Rodolpho PA, Correa MB, Demarco FF, Cenci MS. Patient risk factors' influence on survival of posterior composites. *J Dent Res* 2013;92:785–835.
- [7] Fernandez E, Martin J, Vildosola P, Oliveira Junior OB, Gordan V, Mjor I, et al. Can repair increase the longevity of composite resins? Results of a 10-year clinical trial *J Dent* 2015;43:279–86.
- [8] Hickel R, Brushaver K, Ilie N. Repair of restorations—criteria for decision making and clinical recommendations. *Dent Mater* 2013;29:28–50.
- [9] Moncada G, Martin J, Fernandez E, Hempel MC, Mjor IA, Gordan VV. Sealing, refurbishment and repair of Class I and Class II defective restorations: a three-year clinical trial. *J Am Dent Assoc* 2009;140:425–32.
- [10] Mjor IA, Reep RL, Kubilis PS, Mondragon BE. Change in size of replaced amalgam restorations: a methodological study. *Oper Dent* 1998;23:272–7.
- [11] Moncada G, Vildosola P, Fernandez E, Estay J, de Oliveira Junior OB, de Andrade MF, et al. Longitudinal results of a 10-year clinical trial of repair of amalgam restorations. *Oper Dent* 2015;40:34–43.
- [12] Opdam NJ, Bronkhorst EM, Loomans BA, Huysmans MC. Longevity of repaired restorations: a practice based study. *J Dent* 2012;40:829–35.
- [13] Higgins JPT, Green S. *Cochrane handbook for systematic reviews of interventions*, version 5.1.0, Cochrane Library; 2011. www.cochrane-handbook.org.
- [14] Moher D, Liberati A, Tetzlaff J, Altman DG, Group P. Preferred reporting items for systematic reviews and meta-analyses: the PRISMA statement. *PLOS Med* 2009;6:e1000097.
- [15] Higgins JPT, Altman DG, Sterne JAC. Assessing risk of bias in included studies. *Cochrane handbook for systematic reviews of interventions* version 5.1.0; 2011 (updated in March). p. 8. www.cochrane-handbook.org.
- [16] Moraes AP, Sarkis-Onofre R, Moraes RR, Cenci MS, Soares CJ, Pereira-Cenci T. Can silanization increase the retention of glass-fiber posts? A systematic review and meta-analysis of *in vitro* studies *Oper Dent* 2015;40:567–80. <http://dx.doi.org/10.2341/14-330-O>.
- [17] Sarkis-Onofre R, Skupien JA, Cenci MS, Moraes RR, Pereira-Cenci T. The role of resin cement on bond strength of glass-fiber posts luted into root canals: a systematic review and meta-analysis of *in vitro* studies. *Oper Dent* 2014;39:E31–44.
- [18] Al Musa AH, Al Nahedh HN. Incremental layer shear bond strength of low-shrinkage resin composites under different bonding conditions. *Oper Dent* 2014;39:603–11.
- [19] Bacchi A, Consani RL, Sinhoreti MA, Feitosa VP, Cavalcante LM, Pfeifer CS, et al. Repair bond strength in aged methacrylate- and silorane-based composites. *J Adhes Dent* 2013;15:447–52.
- [20] Bouschlicher MR, Reinhardt JW, Vargas MA. Surface treatment techniques for resin composite repair. *Am J Dent* 1997;10:279–83.
- [21] Brosh T, Pilo R, Bichacho N, Blustein R. Effect of combinations of surface treatments and bonding agents on the bond strength of repaired composites. *J Prosthet Dent* 1997;77:122–6.
- [22] Cavalcanti AN, De Lima AF, Peris AR, Mitsui FHO, Marchi GM. Effect of surface treatments and bonding agents on the bond strength of repaired composites. *J Esthet Restor Dent* 2007;19:90–8.
- [23] Fawzy AS, El-Askary FS, Amer MA. Effect of surface treatments on the tensile bond strength of repaired water-aged anterior restorative micro-fine hybrid resin composite. *J Dent* 2008;36:969–76.
- [24] Hamano N, Chiang Y-C, Nyamaa I, Yamaguchi H, Ino S, Hickel R, et al. Effect of different surface treatments on the repair strength of a nanofilled resin-based composite. *Dent Mater J* 2011;30:537–45.
- [25] Imbery TA, Gray T, DeLatour F, Boxx C, Best AM, Moon PC. Evaluation of flexural, diametral tensile, and shear bond strength of composite repairs. *Oper Dent* 2014;39:E250–60.
- [26] Jafarzadeh Kashi TS, Erfan M, Rakhshan V, Aghabaigi N, Tabatabaei FS. An *in vitro* assessment of the effects of three surface treatments on repair bond strength of aged composites. *Oper Dent* 2011;36:608–17.
- [27] Kaneko M, Caldas RA, Feitosa VP, Xediek Consani RL, Schneider LF, Bacchi A. Influence of surface treatments to repair recent fillings of silorane-and methacrylate-based composites. *J Conserv Dent* 2015;18:242–6.
- [28] Oztas N, Alacam A, Bardakcy Y. The effect of air abrasion with two new bonding agents on composite repair. *Oper Dent* 2003;28:149–54.

- [29] Rathke A, Tymina Y, Haller B. Effect of different surface treatments on the composite–composite repair bond strength. *Clin Oral Investig* 2009;13:317–23.
- [30] Shahdad SA, Kennedy JG. Bond strength of repaired anterior composite resins: an in vitro study. *J Dent* 1998;26:685–94.
- [31] Tezvergil A, Lassila LVJ, Vallittu PK. Composite–composite repair bond strength: effect of different adhesion primers. *J Dent* 2003;31:521–5.
- [32] Eli I, Liberman R, Levi N, Haspel Y. Bond strength of joined posterior light-cured composites: comparison of surface treatments. *J Prosthet Dent* 1988;60:185–9.
- [33] Pospisil J, Horak Z, Krulis Z, Nespurek S, Kuroda S. Degradation and aging of polymer blends I. Thermomechanical and thermal degradation. *Polym Degrad Stab* 1999;65:405–14.
- [34] Ferracane JL. Hygroscopic and hydrolytic effects in dental polymer networks. *Dent Mater* 2006;22:211–22.
- [35] Zhang Y, Lawn BR, Rekow ED, Thompson VP. Effect of sandblasting on the long-term performance of dental ceramics. *J Biomed Mater Res B Appl Biomater* 2004;71:381–6.
- [36] Valente LL, Silva MF, Fonseca AS, Munchow EA, Isolan CP, Moraes RR. Effect of diamond bur grit size on composite repair. *J Adhes Dent* 2015;17:257–63.
- [37] Acharya GS, Manjunath M. The effect of surface treatments and bonding regimens on microtensile bond strengths of repaired composite: an in vitro study. *J Conserv Dent* 2012;15:383–7.
- [38] Azarbal P, Boyer DB, Chan KC. The effect of bonding agents on the interfacial bond strength of repaired composites. *Dent Mater* 1986;2:153–5.
- [39] Barcellos DC, Miyazaki Santos VM, Niu LN, Pashley DH, Tay FR, Pucci CR. Repair of composites: effect of laser and different surface treatments. *Int J Adhes Adhes* 2015;59:1–6.
- [40] Barcellos DC, Palazon MT, Pucci CR, Aizawa LH, Goncalves SEP. Influence of different surface treatments on bond strength of resin composite using the intrinsic characterization technique. *Oper Dent* 2013;38:635–43.
- [41] Baur V, Ilie N. Repair of dental resin-based composites. *Clin Oral Investig* 2013;17:601–8.
- [42] Bektas OO, Eren D, Herguner Siso S, Akin GE. Effect of thermocycling on the bond strength of composite resin to bur and laser treated composite resin. *Lasers Med Sci* 2012;27:723–8.
- [43] Bonstein T, Garlapo D, Donarummo Jr J, Bush PJ. Evaluation of varied repair protocols applied to aged composite resin. *J Adhes Dent* 2005;7:41–9.
- [44] Boyer DB, Chan KC, Reinhardt JW. Build-up and repair of light-cured composites: bond strength. *J Dent Res* 1984;63:1241–4.
- [45] Boyer DB, Chan KC, Torney DL. The strength of multilayer and repaired composite resin. *J Prosthet Dent* 1978;39:63–7.
- [46] Bredeke J, Ozcan M. Effect of physicochemical aging conditions on the composite–composite repair bond strength. *J Adhes Dent* 2007;9:399–406.
- [47] Burnett Jr. LH, Shinkai RSA, Eduardo CDP. Tensile bond strength of a one-bottle adhesive system to indirect composites treated with Er:YAG laser, air abrasion, or fluoridric acid. *Photomed Laser Surg* 2004;22:351–6.
- [48] Causton BE. Repair of abraded composite fillings. An in vitro study. *Br Dent J* 1975;139:286–8.
- [49] Celik C, Cehreli BS, Bagis B, Arhun N. Microtensile bond strength of composite-to-composite repair with different surface treatments and adhesive systems. *J Adhes Sci Technol* 2014;28:1264–76.
- [50] Celik EU, Ergucu Z, Turkun LS, Ercan UK. Tensile bond strength of an aged resin composite repaired with different protocols. *J Adhes Dent* 2011;13:359–66.
- [51] Cesar PF, Meyer Faara PM, Miwa Caldart R, Gastaldoni Jaeger R, da Cunha Ribeiro F. Tensile bond strength of composite repairs on artglass using different surface treatments. *Am J Dent* 2001;14:373–7.
- [52] Chan KC, Boyer DB. Repair of conventional and microfilled composite resins. *J Prosthet Dent* 1983;50:345–50.
- [53] Cho SD, Rajitrangson P, Matis BA, Platt JA. Effect of Er,Cr:YSGG laser, air abrasion, and silane application on repaired shear bond strength of composites. *Oper Dent* 2013;38:E1–9.
- [54] Coffone BT, Chaves FO, Alonso RC, Di Hipólito V, D'Alpino PH. Compatibility of silorane composite repaired with methacrylate-based restorative systems. *J Adhes Sci Technol* 2014;28:1579–91.
- [55] Costa TR, Ferreira SQ, Klein-Junior CA, Loguercio AD, Reis A. Durability of surface treatments and intermediate agents used for repair of a polished composite. *Oper Dent* 2010;35:231–7.
- [56] Da Costa TRF, Serrano AM, Atman APF, Loguercio AD, Reis A. Durability of composite repair using different surface treatments. *J Dent* 2012;40:513–21.
- [57] Dall'Oca S, Papacchini F, Goracci C, Cury AH, Suh BI, Tay FR, et al. Effect of oxygen inhibition on composite repair strength over time. *J Biomed Mater Res B Appl Biomater* 2007;81:493–8.
- [58] Dall'Oca S, Papacchini F, Radovic I, Polimeni A, Ferrari M. Repair potential of a laboratory-processed nano-hybrid resin composite. *J Oral Sci* 2008;50:403–12.
- [59] Dias WRL, Ritter AV, Swift Jr EJ. Repairability of a packable resin-based composite using different adhesives. *Am J Dent* 2003;16:181–5.
- [60] El-Amin AM, Daifalla LE, Zaazou MH, Gomaa HA, Mobarak EH. Repair bond strength of aged silorane-based composite using intermediate adhesive systems based on different monomers. *J Adhes Dent* 2015;17:163–8.
- [61] El-Askary FS, El-Banna AH, van Noort R. Immediate vs delayed repair bond strength of a nanohybrid resin composite. *J Adhes Dent* 2012;14:265–74.
- [62] El-Askary FS, Fawzy AS, Elmohsen HMA. Tensile bond strength of immediately repaired anterior microfine hybrid restorative composite using non-trimmed hourglass specimens. *J Adhes Dent* 2009;11:41–7.
- [63] Eliasson ST, Tibballs J, Dahl JE. Effect of different surface treatments and adhesives on repair bond strength of resin composites after one and 12 months of storage using an improved microtensile test method. *Oper Dent* 2014;39:E206–16.
- [64] Flores S, Charlton DG, Evans DB. Repairability of polyacid-modified composite resin. *Oper Dent* 1995;20:191–6.
- [65] Forsten L, Stromberg K. Repair of composite filling material using enamel bond resin. *Proc Finn Dent Soc* 1976;72:199–201.
- [66] Frankenberger R, Kramer N, Ebert J, Lohbauer U, Kappel S, ten Weges S, et al. Fatigue behavior of the resin–resin bond of partially replaced resin-based composite restorations. *Am J Dent* 2003;16:17–22.
- [67] Frankenberger R, Roth S, Kramer N, Pelka M, Petschelt A. Effect of preparation mode on class II resin composite repair. *J Oral Rehabil* 2003;30:559–64.
- [68] Furuse AY, da Cunha LF, Benetti AR, Mondelli J. Bond strength of resin–resin interfaces contaminated with saliva and submitted to different surface treatments. *J Appl Oral Sci* 2007;15:501–5.
- [69] Giachetti L, Russo DS, Baldini M, Goracci C, Ferrari M. Repairability of aged silorane with methacrylate-based resin composite: micro-shear bond strength and scanning electron microscopy evaluation. *Oper Dent* 2012;37:28–36.
- [70] Goncalves AP, Lima FG, Hidalgo GE, de Moraes RR. Short Exposure to 1% hydrofluoric acid to improve the repair bond strength of dental resin composites. *J Adhes* 2015;91:235–43.
- [71] Gregory WA, Berry S, Duke E, Dennison JB. Physical properties and repair bond strength of direct and indirect composite resins. *J Prosthet Dent* 1992;68:406–11.
- [72] Gregory WA, Pounder B, Bakus E. Bond strengths of chemically dissimilar repaired composite resins. *J Prosthet Dent* 1990;64:664–8.
- [73] Gupta S, Parolia A, Jain A, Kundabala M, Mohan M, de Moraes Porto IC. A comparative effect of various surface chemical treatments on the resin composite–composite repair bond strength. *J Indian Soc Pedod Prev Dent* 2015;33:245–9.
- [74] Hamano N, Chiang Y-C, Nyamaa I, Yamaguchi H, Ino S, Hickel R, et al. Repair of silorane-based dental composites: influence of surface treatments. *Dent Mater* 2012;28:894–902.
- [75] Hamano N, Ino S, Fukuyama T, Hickel R, Kunzelmann K-H. Repair of silorane-based composites: microtensile bond strength of silorane-based composites repaired with methacrylate-based composites. *Dent Mater J* 2013;32:695–701.
- [76] Hannig C, Hahn P, Thiele PP, Attin T. Influence of different repair procedures on bond strength of adhesive filling materials to etched enamel in vitro. *Oper Dent* 2003;28:800–7.
- [77] Hannig C, Laubach S, Hahn P, Attin T. Shear bond strength of repaired adhesive filling materials using different repair procedures. *J Adhes Dent* 2006;8:35–40.
- [78] Hemadri M, Saritha G, Rajasekhar V, Pachlag KA, Purushotham R, Reddy VK. Shear bond strength of repaired composites using surface treatments and repair materials: an in vitro study. *J Int Oral Health* 2014;6:22–5.
- [79] Hisamatsu N, Atsuta M, Matsumura H. Effect of silane primers and unfilled resin bonding agents on repair bond strength of a prosthodontic microfilled composite. *J Oral Rehabil* 2002;29:644–8.
- [80] Hisamatsu N, Tanoue N, Yanagida H, Atsuta M, Matsumura H. Twenty-four hour bond strength between layers of a highly loaded indirect composite. *Dent Mater J* 2005;24:440–6.
- [81] Ilie N, Oberthuer M-T. Effect of sonic-activated resin composites on the repair of aged substrates: an in vitro investigation. *Clin Oral Investig* 2014;18:1605–12.
- [82] Ilie N, Stawarczyk B. Efficiency of different repair kits on bonding to aged dental resin composite substrates. *Int J Adhes Adhes* 2015;58:7–12.
- [83] Ivanovas S, Hickel R, Ilie N. How to repair fillings made by silorane-based composites. *Clin Oral Investig* 2011;15:915–22.
- [84] Kallio TT, Lastumaki TM, Vallittu PK. Effect of resin application time on bond strength of polymer substrate repaired with particulate filler composite. *J Mater Sci Mater Med* 2003;14:999–1004.
- [85] Kallio TT, Tezvergil-Mutluay A, Lassila LV, Vallittu PK. The effect of surface roughness on repair bond strength of light-curing composite resin to polymer composite substrate. *Open Dent J* 2013;7:126–31.
- [86] Kao EC, Pryor HG, Johnston WM. Strength of composites repaired by laminating with dissimilar composites. *J Prosthet Dent* 1988;60:328–33.
- [87] Karaman E, Gonulol N. Does the light source affect the reparability of composite resins? *Braz Oral Res* 2014;28(4):326–31.
- [88] Kimyai S, Mohammadi N, Navimipour EJ, Rikhtegaran S. Comparison of the effect of three mechanical surface treatments on the repair bond strength of a laboratory composite. *Photomed Laser Surg* 2010;28(Suppl 2):S25–30.
- [89] Kimyai S, Oskoe SS, Mohammadi N, Rikhtegaran S, Bahari M, Oskoe PA, et al. Effect of different mechanical and chemical surface treatments on the repaired bond strength of an indirect composite resin. *Lasers Med Sci* 2015;30:653–9.
- [90] Kitchens CA, Yates JL, Hembree Jr JH, McKnight JP. Repairability of composite resin systems. *J Pedod* 1978;2:290–5.
- [91] Kupiec KA, Barkmeier WW. Laboratory evaluation of surface treatments for composite repair. *Oper Dent* 1996;21:59–62.

- [92] Lewis G, Johnson W, Martin W, Canerdy A, Claburn C, Collier M. Shear bond strength of immediately repaired light-cured composite resin restorations. *Oper Dent* 1998;23:121–7.
- [93] Lima AF, Ferreira SFA, Catelan A, Palialol ARM, Gonçalves LS, Aguiar FHB, et al. The effect of surface treatment and bonding procedures on the bond strength of silorane composite repairs. *Acta Odontol Scand* 2014;72:71–5.
- [94] Loomans BA, Cardoso MV, Roeters FJ, Opdam NJ, De Munck J, Huysmans MC, et al. Is there one optimal repair technique for all composites? *Dent Mater* 2011;27:701–9.
- [95] Lucena-Martin C, Gonzalez-Lopez S, Navajas-Rodriguez de Mondelo JM. The effect of various surface treatments and bonding agents on the repaired strength of heat-treated composites. *J Prosthet Dent* 2001;86:481–8.
- [96] Luhrs AK, Gormann B, Jacker-Guhr S, Geurtsen W. Repairability of dental siloranes in vitro. *Dent Mater* 2011;27:144–9.
- [97] Magni E, Ferrari M, Papacchini F, Hickel R, Ilie N. Influence of ozone application on the repair strength of silorane-based and ormocer-based composites. *Am J Dent* 2010;23:260–4.
- [98] Magni E, Ferrari M, Papacchini F, Hickel R, Ilie N. Influence of ozone on the composite-to-composite bond. *Clin Oral Investig* 2011;15:249–56.
- [99] Maneenut C, Sakoolnamarka R, Tyas MJ. The repair potential of resin composite materials. *Dent Mater* 2011;27:e20–7.
- [100] Mitsaki-Matsou H, Karanika-Kouma A, Papadoyiannis Y, Theodoridou-Pahine S. An in vitro study of the tensile strength of composite resins repaired with the same or another composite resin. *Quintessence Int* 1991;22:475–81.
- [101] Mobarak E, El-Deeb H. Two-year interfacial bond durability and nanoleakage of repaired silorane-based resin composite. *Oper Dent* 2013;38:408–18.
- [102] Moncada G, Angel P, Fernandez E, Alonso P, Martin J, Gordan VV. Bond strength evaluation of nanohybrid resin-based composite repair. *Gen Dent* 2012;60:230–4.
- [103] Oskoe PA, Kimyai S, Talatahari E, Rikhtegaran S, Pournaghi-Azar F, Sajadi Oskoe J. Effect of mechanical surface treatment on the repair bond strength of the silorane-based composite resin. *J Dent Res Dent Clin Dent Prospects* 2014;8:61–6.
- [104] Oskoe PA, Mohammadi N, Chaharom ME, Kimyai S, Pournaghi Azar F, Rikhtegaran S, et al. Effect of surface treatment with Er:Cr:YSSG, Nd:YAG, and CO₂ lasers on repair shear bond strength of a silorane-based composite resin. *J Dent Res Dent Clin Dent Prospects* 2013;7:61–6.
- [105] Ozcan M, Alander P, Vallittu PK, Huysmans MC, Kalk W. Effect of three surface conditioning methods to improve bond strength of particulate filler resin composites. *J Mater Sci Mater Med* 2005;16:21–7.
- [106] Ozcan M, Barbosa SH, Melo RM, Galhano GAP, Bottino MA. Effect of surface conditioning methods on the microtensile bond strength of resin composite to composite after aging conditions. *Dent Mater* 2007;23:1276–82.
- [107] Ozcan M, Corazza PH, Marocho SM, Barbosa SH, Bottino MA. Repair bond strength of microhybrid, nanohybrid and nanofilled resin composites: effect of substrate resin type, surface conditioning and ageing. *Clin Oral Investig* 2013;17:1751–8.
- [108] Ozcan M, Cura C, Brendeke J. Effect aging conditions on the repair bond strength of a microhybrid and a nanohybrid resin composite. *J Adhes Dent* 2013;12:451–9.
- [109] Ozcan M, Kojima AN, Pekkan G, Melo Mesquita AM, Bottino MA. Adhesion of substrate-adherent combinations for early composite repairs: effect of intermediate adhesive resin application. *Int J Adhes Adhes* 2014;49:97–102.
- [110] Ozcan M, Pekkan G. Effect of delay in layering on the incremental adhesion of indirect dental composite resins. *Int J Adhes Adhes* 2012;39:15–20.
- [111] Padipatvuthikul P, Mair LH. Bonding of composite to water aged composite with surface treatments. *Dent Mater* 2007;23:519–25.
- [112] Palasuk J, Piatt JA, Cho SD, Levon JA, Brown DT, Hovijitra ST. Effect of surface treatments on microtensile bond strength of repaired aged silorane resin composite. *Oper Dent* 2013;38:91–9.
- [113] Papacchini F, Dall'Oca S, Chieffi N, Goracci C, Sadek FT, Suh BI, et al. Composite-to-composite microtensile bond strength in the repair of a microfilled hybrid resin: effect of surface treatment and oxygen inhibition. *J Adhes Dent* 2007;9:25–31.
- [114] Papacchini F, Magni E, Radovic I, Mazzitelli C, Monticelli F, Goracci C, et al. Effect of intermediate agents and pre-heating of repairing resin on composite-repair bonds. *Oper Dent* 2007;32:363–71.
- [115] Papacchini F, Monticelli F, Hasa I, Radovic I, Fabianelli A, Polimeni A, et al. Effect of air-drying temperature on the effectiveness of silane primers and coupling blends in the repair of a microhybrid resin composite. *J Adhes Dent* 2007;9:391–7.
- [116] Papacchini F, Monticelli F, Radovic I, Chieffi N, Goracci C, Tay FR, et al. The application of hydrogen peroxide in composite repair. *J Biomed Mater Res B Appl Biomater* 2007;82:298–304.
- [117] Papacchini F, Radovic I, Magni E, Goracci C, Monticelli F, Chieffi N, et al. Flowable composites as intermediate agents without adhesive application in resin composite repair. *Am J Dent* 2008;21:53–8.
- [118] Papacchini F, Toledano M, Monticelli F, Osorio R, Radovic I, Polimeni A, et al. Hydrolytic stability of composite repair bond. *Eur J Oral Sci* 2007;115:417–24.
- [119] Passos SP, Ozcan M, Vanderlei AD, Leite FPP, Kimpara ET, Bottino MA. Bond strength durability of direct and indirect composite systems following surface conditioning for repair. *J Adhes Dent* 2007;9:443–7.
- [120] Pontes AP, Oshima HMS, Pacheco JFM, Martins JL, Shinkai RSA. Shear bond strength of direct composite repairs in indirect composite systems. *Gen Dent* 2005;53:343–7.
- [121] Pounder B, Gregory WA, Powers JM. Bond strengths of repaired composite resins. *Oper Dent* 1987;12:127–31.
- [122] Puckett AD, Holder R, O'Hara JW. Strength of posterior composite repairs using different composite/bonding agent combinations. *Oper Dent* 1991;16:136–40.
- [123] Puckett Jr AD, O'Hara Jr JW, Holder R. The repair potential of a posterior composite material. *Miss Dent Assoc J* 1986;42(12-3):24.
- [124] Ribeiro JCR, Gomes PN, Moysões MR, Dias SC, Pereira LJ, Ribeiro JGR. Shear strength evaluation of composite-composite resin associations. *J Dent* 2008;36:326–30.
- [125] Rinastiti M, Ā-zcan M, Siswomihardjo W, Busscher HJ. Immediate repair bond strengths of microhybrid, nanohybrid and nanofilled composites after different surface treatments. *J Dent* 2010;38:29–38.
- [126] Rinastiti M, Ā-zcan M, Siswomihardjo W, Busscher HJ. Effects of surface conditioning on repair bond strengths of non-aged and aged microhybrid, nanohybrid, and nanofilled composite resins. *Clin Oral Investig* 2011;15:625–33.
- [127] Rinastiti M, Ozcan M, Siswomihardjo W, Busscher HJ, van der Mei HC. Effect of biofilm on the repair bond strengths of composites. *J Dent Res* 2010;89:1476–81.
- [128] Rodrigues Jr. SA, Ferracane JL, Della Bona A. Influence of surface treatments on the bond strength of repaired resin composite restorative materials. *Dent Mater* 2009;25:442–51.
- [129] Rossato DM, Bandeca MC, Saade EG, Lizarelli RFZ, Bagnato VS, Saad JRC. Influence of Er:YAG laser on surface treatment of aged composite resin to repair restoration. *Laser Phys* 2009;19:2144–9.
- [130] Sau CW, Oh GS, Koh H, Chee CS, Lim CC. Shear bond strength of repaired composite resins using a hybrid composite resin. *Oper Dent* 1999;24:156–61.
- [131] Saunders WP. Effect of fatigue upon the interfacial bond strength of repaired composite resins. *J Dent* 1990;18:158–62.
- [132] Sousa AB, Silami FD, da Garcia L, Naves LZ, de Pires-de-Souza F. Effect of various aging protocols and intermediate agents on the bond strength of repaired composites. *J Adhes Dent* 2013;15:137–44.
- [133] Souza EM, Francischone CE, Powers JM, Rached RN, Vieira S. Effect of different surface treatments on the repair bond strength of indirect composites. *Am J Dent* 2008;21:93–6.
- [134] Spyrou M, Koliniotou-Koumpia E, Kouros P, Koulaouzidou E, Dionysopoulos P. The reparability of contemporary composite resins. *Eur J Dent* 2014;8:353–9.
- [135] Stawarczyk B, Krawczuk A, Ilie N. Tensile bond strength of resin composite repair in vitro using different surface preparation conditionings to an aged CAD/CAM resin nanoceramic. *Clin Oral Investig* 2015;19:299–308.
- [136] Staxrud F, Dahl JE. Role of bonding agents in the repair of composite resin restorations. *Eur J Oral Sci* 2011;119:316–22.
- [137] Swift Jr EJ, Cloe BC, Boyer DB. Effect of a silane coupling agent on composite repair strengths. *Am J Dent* 1994;7:200–2.
- [138] Swift Jr EJ, LeValley BD, Boyer DB. Evaluation of new methods for composite repair. *Dent Mater* 1992;8:362–5.
- [139] Tantbirojn D, Fernando C, Versluis A. Failure strengths of composite additions and repairs. *Oper Dent* 2014.
- [140] Teixeira EC, Bayne SC, Thompson JY, Ritter AV, Swift EJ. Shear bond strength of self-etching bonding systems in combination with various composites used for repairing aged composites. *J Adhes Dent* 2005;7:159–64.
- [141] Trajtenberg CP, Powers JM. Effect of hydrofluoric acid on repair bond strength of a laboratory composite. *Am J Dent* 2004;17:173–6.
- [142] Trajtenberg CP, Powers JM. Bond strengths of repaired laboratory composites using three surface treatments and three primers. *Am J Dent* 2004;17:123–6.
- [143] Turner CW, Meiers JC. Repair of an aged, contaminated indirect composite resin with a direct, visible-light-cured composite resin. *Oper Dent* 1993;18:187–94.
- [144] Valente LL, Silva MF, Fonseca AS, Munchow EA, Isolani CP, Moraes RR. Effect of diamond bur grit size on composite repair. *J Adhes Dent* 2015;17:257–63.
- [145] Veiga de Melo MA, Moyses MR, dos Santos SG, Pinto Alcantara CE, Rabelo Ribeiro JC. Effects of different surface treatments and accelerated artificial aging on the bond strength of composite resin repairs. *Braz Oral Res* 2011;25:485–91.
- [146] Vivas J, Yaman P, Taylor G. Effect of different surface treatments on the shear and flexural re-bond strengths of a micro-hybrid composite. *J Contemp Dent Pract* 2009;10:E001–8.
- [147] Wiegand A, Stawarczyk B, Buchalla W, Tauboeck TT, Oezcan M, Attin T. Repair of silorane composite-using the same substrate or a methacrylate-based composite? *Dent Mater* 2012;28:E19–25.
- [148] Yap AUJ, Sau CW, Lye KW. Effects of aging on repair bond strengths of a polyacid-modified composite resin. *Oper Dent* 1999;24:371–6.
- [149] Yesilyurt C, Kusgoz A, Bayram M, Ulker M. Initial repair bond strength of a nano-filled hybrid resin: effect of surface treatments and bonding agents. *J Esthet Restor Dent* 2009;21:251–60.
- [150] Yokokawa M, Rikuta A, Tsujimoto A, Tsuchiya K, Shibasaki S, Matsuyoshi S, et al. Influence of methyl mercaptan on the repair bond strength of composites fabricated using self-etch adhesives. *Eur J Oral Sci* 2015;123:46–52.