



# Neurological Complications Associated with the Blood-Brain Barrier Damage Induced by the Inflammatory Response During SARS-CoV-2 Infection

Iván Alquisiras-Burgos<sup>1</sup> · Irlanda Peralta-Arrieta<sup>2</sup> · Luis Antonio Alonso-Palomares<sup>3</sup> · Ana Elvira Zacapala-Gómez<sup>4</sup> · Eric Genaro Salmerón-Bárceñas<sup>5</sup> · Penélope Aguilera<sup>1</sup>

Received: 19 August 2020 / Accepted: 16 September 2020  
© Springer Science+Business Media, LLC, part of Springer Nature 2020

## Abstract

The main discussion above of the novel pathogenic severe acute respiratory syndrome coronavirus 2 (SARS-CoV-2) infection has focused **substantially** on the immediate risks and impact on the respiratory system; however, the effects induced to the central nervous system are currently unknown. Some authors have suggested that SARS-CoV-2 infection can dramatically affect brain function and exacerbate neurodegenerative diseases in patients, but the mechanisms have not been entirely described. In this review, we gather information from past and actual studies on coronaviruses that informed neurological dysfunction and brain damage. Then, we analyzed and described the possible mechanisms causative of brain injury after SARS-CoV-2 infection. We proposed that potential routes of SARS-CoV-2 neuro-invasion are determinant factors in the process. We considered that the hematogenous route of infection can directly affect the brain microvascular endothelium cells that integrate the blood-brain barrier and be fundamental in initiation of brain damage. Additionally, activation of the inflammatory response against the infection represents a critical step on injury induction of the brain tissue. Consequently, the virus' ability to infect brain cells and induce the inflammatory response can promote or increase the risk to acquire central nervous system diseases. Here, we contribute to the understanding of the neurological conditions found in patients with SARS-CoV-2 infection and its association with the blood-brain barrier integrity.

**Keywords** SARS-CoV-2 · COVID-19 · Blood-brain barrier · Neurological complications · Inflammatory response · Neurotropism

✉ Penélope Aguilera  
penelope.aguilera@innn.edu.mx

<sup>1</sup> Laboratorio de Patología Vascular Cerebral, Instituto Nacional de Neurología y Neurocirugía “Manuel Velasco Suárez”, Insurgentes Sur #3877, 14269 Ciudad de México, Mexico

<sup>2</sup> Laboratorio de Epigenómica del Cáncer y Enfermedades Pulmonares, Unidad de Investigación en Biomedicina, Facultad de Estudios Superiores-Iztacala, Universidad Nacional Autónoma de México, 54090 Tlanepantla, Estado de México, Mexico

<sup>3</sup> Molecular and Cellular Virology Laboratory, Virology Program, Institute of Biomedical Sciences, Faculty of Medicine, Universidad de Chile, 8380453 Santiago, Chile

<sup>4</sup> Laboratorio de Biomedicina Molecular, Facultad de Ciencias Químico Biológicas, Universidad Autónoma de Guerrero, 39070 Chilpancingo de los Bravo, Mexico

<sup>5</sup> Departamento de Biomedicina Molecular, Centro de Investigación y de Estudios Avanzados del Instituto Politécnico Nacional, 07360 Ciudad de México, Mexico

## Coronaviruses

Coronaviruses (CoVs) belong to the order Nidovirales and family Coronaviridae which is grouped on four genera based on phylogeny: *Alphacoronavirus*, *Betacoronavirus*, *Gammacoronavirus*, and *Deltacoronavirus* (International Committee for Taxonomy of Virus; <https://talk.ictvonline.org/>). CoVs are envelopment and spherical particles of 80 to 120 nm in diameter with a crown-like structures. This family contains the largest and non-segmented RNA genome, which is formed with a single-strand positive-sense around 27 to 32 kb in size [1]. CoVs' genome shares structural organization, although differs in the base pairs number and sequence, even among closely related CoVs. The open reading frames 1a/b (ORF1a and ORF1b), located at the 5' end encode non-structural components, the polyproteins pp1a and pp1b. Two viral proteases cleave these proteins to generate 16 non-structural proteins (nsp1 to nsp16), including the RNA-dependent RNA polymerase (RdRP), an important protein

involved in genome transcription and replication. The 3' end includes ORFs that encode four major structural proteins: the spike surface glycoprotein (S), a small envelope protein (E), membrane protein (M), and nucleocapsid protein (N) that covers the RNA (Fig. 1). Besides, the CoV genome maintains genes that encode accessory proteins indispensable for adaptation and virulence and be successful to specific host [2, 3].

The *Betacoronavirus* are zoonotic pathogens that have a wild animal origin, for example, bat or rodent origin. This group includes pathogenic human CoVs (HCoVs), such as HCoV-229E, HCoV-OC43, HCoV-NL63, and HCoV-HKU1, that infect mammals and provoke mild related respiratory illness in infants, young children, elderly individuals, and immunocompetent hosts [1, 3]. However, the severe acute respiratory syndrome-related CoV (SARS-CoV) and the Middle East respiratory syndrome-related CoV (MERS-CoV) cause a severe respiratory syndrome in humans that aroused large-scale pandemics during 2002–2003 and 2012, respectively [4, 5]. Importantly, late in December 2019, Wuhan Municipal Health Commission, China, reported a cluster of cases of atypical pneumonia in Wuhan, Hubei Province, China, associated with a virus that rapidly spread all over the world.

## Severe Acute Respiratory Syndrome CoV-2 (SARS-CoV-2)

Briefly, on December 26, 2019, a male patient of 41 years old, who worked at the local seafood market, was hospitalized in the Central Hospital of Wuhan. The patient-reported symptoms are fever, chest tightness, cough, pain, weakness, sputum production, and dyspnea [6]. For its origin, it was speculated that the disease could be associated with a CoV. This information was confirmed after the unknown virus was isolated from bronchial-alveolar lavage fluid from the patient [6]. On January 12, 2020, China publicly shared the genetic sequence of a new CoV.

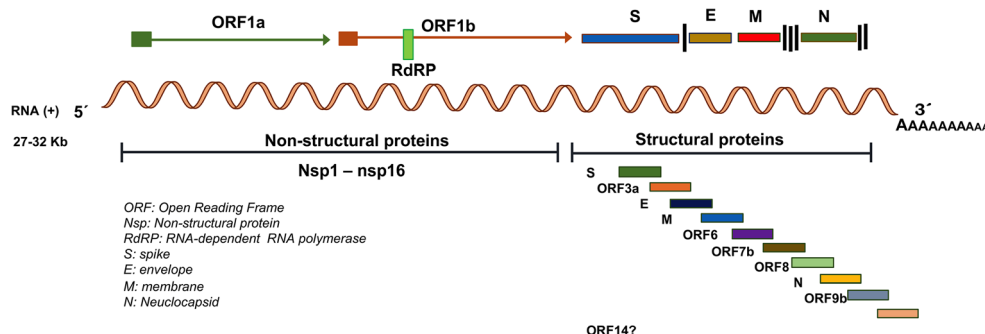
Metagenomic RNA sequencing identified a new RNA virus whose genome sequence of 29,903 nucleotides was designated as WH-Human1 coronavirus [6], later referred to as 2019 novel coronavirus, and at present named as SARS CoV type 2 (SARS-CoV-2) by the World Health Organization (WHO). SARS-CoV-2 has an overall genome sequence identity of 82% with SARS-CoV [7] and 96.2% with batCoV RaTG13 (*Rhinolophus affinis*) from Yunnan province, suggesting a bat origin [8]. Although the origin of SARS-CoV-2 is zoonotic, there is no certainty of its intermediate animal host. Some studies indicated that snakes were the intermediate hosts, but the most recent research concluded that some pangolin species are the missing link [9–11].

On January 30, 2020, the WHO declared SARS-CoV-2 outbreak a Public Health Emergency of International Concern and pandemic on March 11, 2020. The global situation by SARS-CoV-2 infections reported to the WHO by August 15, 2020, includes 21,026,758 confirmed cases and 755,786 deaths, while the America region reported 11,271,215 confirmed cases (<https://covid19.who.int/>).

## Clinical Features of CoV Coronavirus Disease 2019 (COVID-19)

Pathogenicity and transmission capacity of any pathogen are indicated from the  $R_0$  value. Epidemiologically,  $R_0$  is defined as the average number of people who will acquire a disease from an infected person. Therefore,  $R_0$  indicates the potential spread (contagious) or decline of disease. When  $R_0 < 1$ , the condition will decline and eventually disappear; if  $R_0 = 1$ , the disease will stay alive, but will not turn in to an epidemic; with values of  $R_0 > 1$ , cases could grow exponentially and cause an epidemic or a pandemic [12]. The transmissibility and mortality rate of SARS-CoV-2 have been reported by several authors, and the estimated value is so far under debate (for more detail, see reference Liu et al. [12]). However, according to Chen et al. [13], it is estimated that SARS-CoV-2 has

**Fig. 1** SARS-CoV-2 genome organization. The SARS-CoV-2 genome size is around 32 kb and is an RNA single-strand positive-sense that encodes 16 non-structural proteins (5' end) and 4 structural proteins (3' end) (S, E, M, and N) and 6 accessory proteins. SARS-CoV-2 genome. The genome contains a PolIA tail at 3' end



relatively low pathogenicity (3%) and moderate transmissibility ( $R_0 = 1.4\text{--}5.5$ ).

COVID-19 is the illness caused by SARS-CoV-2 infection. SARS-CoV-2 infects the higher upper respiratory tract, but with increased disease severity, the lower respiratory tract is also affected. The main routes of transmission are respiratory droplets and human-to-human, close contact [7, 14, 15]. However, oral-fecal transmission, tears secretion, aerosols, fomites, and even air and surface environmental (e.g., patient's room, floor, air outlet fan, toilet area, and personal protective equipment) are other possible routes of virus' transmission; nevertheless, the effectiveness of these alternative routes is still controversial [15–18]. SARS-CoV-2 infection is possible for the entire population; however, the severity of the illness depends on some highlighted aspects seen around the world. In this sense, higher percentages of infection have been diagnosed in men than in women [19–21], and elderly males ( $\geq 80$  years) are the group more susceptible to complications [22]. Besides, chronic underlying diseases, such as hypertension, diabetes, coronary heart disease, and cancer, have a meaningful impact in case fatality risk [22, 23]. On the other hand, pediatric patients (2 months to 17 years) may have mild symptoms or be asymptomatic; in fact, they have their own clinical features [24–27].

The period of incubation of the SARS-CoV-2, which determines the time in which symptoms are observed, has a wide range from 1 to 14 days [14, 20, 28]. Early and common symptoms by COVID-19 include fever, dry cough, shortness of breath, and chest pain; other symptoms include myalgia, fatigue, and headache. Less common symptoms are sputum production, hemoptysis, and gastrointestinal symptoms, including diarrhea, nausea, and vomiting [22, 28–31]. Depending on illness evolution, COVID-19 might be classified according to the severity of the clinical symptoms in mild (i.e., non-pneumonia and development mild pneumonia); severe (i.e., dyspnea, respiratory frequency  $\geq 30$  breaths per minute, blood oxygen saturation  $\leq 93\%$ , the partial pressure of arterial oxygen to fraction of inspired oxygen ratio  $< 300$ , and lung infiltrates  $> 50\%$  in the first 24 to 48 h); and critical (i.e., respiratory failure, sepsis, septic shock, acute respiratory distress syndrome, and/or multiple organ dysfunction or failure, for example, heart failure, coagulopathy, acute cardiac, and acute kidney injury) [22, 23, 31].

Clinical diagnosis is made based on symptoms, exposure, and chest imaging that show the presence of lung imaging features consistent with CoVs pneumonia that includes ground-glass lung [32, 33]. The respiratory tract is the classical target for SARS-CoV-2 infection; nonetheless, the virus is also visualized by immunofluorescent staining in gastric, duodenal, and rectum glandular epithelial cells [18], showing other target tissues and complexity of the illness. Interestingly, there is evidence of signs and symptoms of

COVID-19 patients (Table 1) and other HCoVs infections [38].

## Neurotropism of SARS-CoV-2

Up to date, many reports have described the association between respiratory viral infections with neurological symptoms. There are several recognized respiratory pathogens that gain access to the central nervous system (CNS), for instance, respiratory syncytial virus, the influenza virus, the human metapneumovirus, and HCoVs (HCoV229E, HCoV-OC43, and SARS-CoV) [39], that induce manifestations such as febrile or afebrile seizures, among other encephalopathies [40, 41].

Primary cultures of human astrocytes and microglia and various human neuronal cell lines, such as the neuroblastoma SK-N-SH, the neuroglioma H4, and the oligodendrocytic MO3.13, have potential tropism for HCoV-OC43 [42]. Using an experimental animal model, HCoV-OC-43 infection also showed neuro-invasiveness and neuro-virulence [43]. Therefore, it is not surprising to find brain SARS-positive autopsies. Using in situ hybridization, the SARS genomic sequence has been detected in the cytoplasm of neurons of the hypothalamus and cerebral cortex [44]. Furthermore, Moriguchi et al. [45] confirmed the presence of the new SARS-CoV-2 in cerebral spinal fluid. In accord, epidemiological and clinical research have described neurological, non-common symptoms, and neurological manifestations associated with the SARS-CoV-2 infection (Table 2). These clinical features include neuralgia, confusion, hyposmia, hypogeusia, and altered consciousness, symptoms that evidence the neurotropic invasion by SARS-CoV-2 [19, 41].

Despite the evidence demonstrating the neurotropism of respiratory viruses, the exact mechanism of neuro-invasion accomplished by viruses remains currently unknown. However, the route of invasion of the CNS has recently been described for HCoV-OC-43. This virus gains access to the CNS through the olfactory bulb, moving along the olfactory nerve. Then, neuro-propagation occurs along the multiple axonal connections expanding through the CNS (e.g., neuron-to-neuron propagation or diffusing particles) [56]. Similar to HCoV-OC-43, a model in vivo of SARS-CoV infection suggested that the virus enters the brain via the olfactory bulb, and then, a transneuronal spread could occur [57].

Also, some infectious blood-borne viruses primarily targeting peripheral organs have evolved strategies to thwart the blood-brain barrier (BBB). These strategies include direct infection of the brain microvascular endothelial cells that form the BBB, a paracellular entry that involves alteration of the tight junctions, or the “Trojan horse” invasion, via the traffic of infected monocytes/macrophages migrating across the BBB, in a similar manner as the non-respiratory

**Table 1** Signs of neurological associated with SARS-CoV-2 infection

Type of study	Signs and symptoms/cases (%)	Reference
Retrospective, single-center case series <i>n</i> = 138 patients	Dizziness 13 (9.4%) Headache 9 (6.5%)	[21]
Retrospective <i>n</i> = 38 patients	Headache 3 (8%)	[30]
Retrospective, single-center study <i>n</i> = 99 patients	Confusion 9 (9%) Headache 8 (8%)	[19]
Retrospective, observational case series <i>n</i> = 214 patients	Neurological manifestations 78 (36.4%) Central nervous system (CNS) manifestations 53 (24.8%) Dizziness 36 (16.8%) Headache 28 (13.1%) Others symptoms: impaired consciousness, acute cerebrovascular disease, ataxia, seizure Peripheral nervous system (PNS) manifestations 19 (8.9%) Taste impairment 12 (5.6%) Smell impairment 11 (5.1%) Others symptoms: vision impairment, nerve pain	[34]
Case report <i>n</i> = 1 patient	Anosmia	[35]
Retrospective observational study <i>n</i> = 114 patient	Anosmia associated with dysgeusia 54 (47%)	[36]
Retrospective report <i>n</i> = 24 males <i>n</i> = 19 females	CNS syndromes Encephalopathies 10 (23%) Symptoms: confusion and disorientation, psychosis, and seizures Neuroinflammatory syndromes 12 (27%) Symptoms: encephalitis, features of an autoimmune encephalitis stimulus sensitive myoclonus, and convergence spasm. Confusion and seizure. Acute demyelinating encephalomyelitis (ADEM): 9 (21%) Hemorrhagic 5 (12%) Necrotizing encephalitis 1(2%), Myelitis 2(5%) Hemorrhagic leucoencephalitis 1(2%)	[37]

immunodeficiency virus 1 (HIV-1) [58, 59]. Likewise, when human primary monocytes are activated following infection by HCoV-229E and eventually become macrophages, it can invade tissues, including the CNS [60, 61]. Additionally, it has been reported that through activation of the brain microendothelium, the damage caused by the inflammatory response, allows the virus to reach the CNS. In this sense, the neuro-invasion of SARS-CoV-2 could occur through trans-synaptic transfer, via the olfactory nerve, infection of

vascular endothelium, or leukocyte migration across the BBB [38].

### The SARS-CoV-2 Receptor

The cellular tropism of CoV depends on the location of its receptor which can be expressed in cells different from those of the respiratory system. Therefore, if SARS-CoV-2 has

**Table 2** Neurological manifestations associated with SARS-CoV-2 infection

Type of study and data of patients	Neurological diagnostic, symptoms, and clinical specimen for SARS-CoV-2 detection	Reference
Case series <i>n</i> = 4 patients 73 Y/A male, 83 Y/A female, 80 Y/A female, and 88 Y/A female	Acute stroke Altered mental status, facial droop, slurred speech, left-side weakness, hemiplegia, and aphasia <i>Not specific specimen</i>	[46]
Case report <i>n</i> = 2 patients 31 Y/A male, 62 Y/A female	Hunt and Hess grade 3 subarachnoid hemorrhage from a rupture aneurysm Headache and loss of consciousness Ischemic stroke <i>Nasal specimen</i>	[47]
Case report <i>n</i> = 5 patients, < 50 Y/A	Large-vessel stroke Headache, dysarthria, numbness, hemiplegia, and reduced level of consciousness <i>Not specific specimen</i>	[48]
Case report <i>n</i> = 1 patient 41 Y/A	Meningoencephalitis Seizure, lethargic, photophobia, worsening encephalopathy, disorientation, hallucinations, and neck stiffness <i>Not specified specimen</i>	[49]
Case report <i>n</i> = 1 patient 24 Y/A Retrospectively report <i>n</i> = 24 males and 19 females 16–85 Y/A	Meningitis/encephalitis fatigue and fever, vomit, seizures, unconsciousness, and neck stiffness <i>Cerebral spinal fluid specimen</i> Stroke and stroke with pulmonary thromboembolism Guillain-Barré syndrome <i>Nasopharyngeal specimen</i>	[45] [37]
Case report <i>n</i> = 2 patients 52 Y/A male, 39 Y/A male	Variants of Guillain-Barré syndrome Miller Fisher syndrome Diplopia, gait instability, headache, anosmia, and ageusia Polyneuritis cranialis and ageusia <i>Oropharyngeal specimen</i>	[50]
Case report <i>n</i> = 1 patient 61 Y/A female	Acute Guillain-Barré syndrome Legs weakness and severe fatigue <i>Oropharyngeal specimen</i>	[51]
Case report <i>n</i> = 1 patient 65 Y/A male	Guillain-Barré syndrome Acute progressive symmetric ascending quadriparesis, facial paresis bilaterally <i>Oropharyngeal specimen</i>	[52]
Case report <i>n</i> = 5 patients	Guillain-Barré syndrome <i>Nasopharyngeal specimen</i>	[53]
Case report <i>n</i> = 1 patient	Guillain-Barré syndrome <i>Nasopharyngeal specimen</i>	[54]
Case report <i>n</i> = 1 patient 58 Y/A female	Acute hemorrhagic necrotizing encephalopathy Altered mental status <i>Nasopharyngeal specimen</i>	[55]

reached the CNS, the infection of brain cells depends on receptor recognition. It is the first step of viral infection and a key determinant of the host cell and tissue tropism. Walls et al. [62] reported that the angiotensin-converting enzyme 2 (ACE2), a metallopeptidase, mediates SARS-CoV-2 entry into cells, establishing it as a functional receptor for this recently appeared CoV. Previous studies achieved with SARS-CoV also showed that the binding affinity between viruses and human ACE2 correlates with increased virus transmissibility and disease severity in humans [63].

The human ACE2 protein is included within the renin-angiotensin system (RAS) which is widely known for its physiological roles in electrolyte homeostasis, body fluid volume regulation, and cardiovascular control in the peripheral circulation. Renin, an enzyme produced from the kidney, acts on

angiotensinogen (AGT), a liver precursor, to release angiotensin I (Ang I), an inactive decapeptide. Human ACE2 cleaves Ang I to convert it to the active octapeptide Ang II, the effector peptide of RAS, which is essential for various physiological functions [64].

The RAS has been described in various tissues such as the heart, the kidney, the lungs, the liver, the retina, and the brain [64, 65]. Chen et al. [66] screened the human ACE2 mRNA expression in human organs based on hGTEx database. They found that the digestive tract intestine displayed the highest expression of human ACE2, followed by the testis and the kidney. Consequently, the high vulnerability to SARS-CoV-2 to these organs could explain the positive detection of the virus in the patient's feces and urine [67]. The expression of human ACE2 in the heart is lower than that in the intestine and

kidney but higher than that in the lung, which serves as the main target organ for SARS-CoV-2, indicating a potential infection susceptibility of the human heart.

Unfortunately, there is relatively little information available on both the expression and regulation of RAS in the brain [68, 69]. Dzau et al. [70] demonstrated the expression of the ACE2 mRNA in mouse and rat brains using Northern blot analyses, although low levels of the human ACE2 mRNA were shown in the human brain using quantitative real-time RT-PCR [71, 72]. Chappell et al. [73] made the first demonstration of the endogenous presence of the ACE2 protein in brain tissues of rats using reverse-phase high-performance liquid chromatography and radioimmunoassays. Later, immunohistochemistry studies showed that human ACE2 protein was restricted to endothelial and arterial smooth muscle cells of cerebral vessels [74]. However, Lavoie et al. [68] produced double-transgenic mice which express the green fluorescent protein driven by the renin promoter and the  $\beta$ -galactosidase driven by the human angiotensin gene promoter and found that both proteins are co-expressed in the medulla, the pons, the amygdala, the hypothalamus, and the hippocampus; additionally, other regions only expressed the ACE2 protein. Interestingly, ACE2 protein is predominant but not exclusive of neurons; astrocytes and glial cells also express it [68, 75, 76]. Additionally, it is possible that the brain endothelium expresses the ACE2 protein since recent studies demonstrated the susceptibility to the infection of endothelial cells in other tissues [66, 77].

The virus surface-anchored spike protein (S) mediates the SARS-CoV-2 entry to the target cell. Protein S contains a receptor-binding domain (RBD) that specifically recognizes the ACE2. The RBD shows a hidden position in SARS-CoV-2 that lead to poor recognition of the host receptor; however, this problem is overcome with an ACE2 high binding affinity and a furin motif that allows its spike to be pre-activated. Therefore, pro-protein convertase furin (PCF) plays an essential role in virus' membrane fusion [78, 79]. PCF is a ubiquitously expressed subtilisin-related serine protease and member of the pro-protein convertase family that functions within the secretory and endocytic pathways and at the cell surface, cleaving pro-proteins. PCF has several substrates that include growth factors, receptors, coagulation proteins, plasma proteins, extracellular matrix components, and protease precursors (e.g., matrix metalloproteases). PCF activity contributes to numerous functions in CNS and also is involved in chronic pathological conditions [80]. PCF cleavage of viral envelope glycoproteins is necessary for the propagation of many lipid-enveloped viral pathogens. Accordingly, sequence alignment indicates that the PCF cleavage site in S protein is essential in CoV evolution [81]. Notably, the PCF cleavage site is involved in pathogenicity and modulates neuro-virulence. Some mutations in PCF induce severe encephalitis and break the BBB [82], while others lead to reduced

neurotropism and limited dissemination within the CNS [83]. Therefore, evidence supports that SARS-CoV-2 can reach SNC and infect brain cells through S protein binding to ACE2 and modification by PCF.

## SARS-CoV-2 and the Function of the BBB

The microvascular endothelial cells that form the BBB protect the CNS from a wide variety of toxins and microorganisms found in the blood. These cells express tight junction proteins that limit the movement between adjacent cells and are through specific transporters and receptor proteins that control entry and exit of molecules coming from the blood toward the brain parenchyma [84]. Therefore, the study of the damage induced to microvascular endothelial cells represents the central framework for understanding the molecular mechanisms of virus infection in the CNS [85, 86].

Disruption of the BBB occurs upon infection with several recognized neurotropic viruses. Arbovirus that belongs to the Flaviviridae family, such as the West Nile Virus and the Zika virus, can induce damage in the BBB caused by the host cell's response to viral factors. Experiments carried out using in vitro and in vivo models of the BBB have demonstrated that these viruses replicate in the brain microvascular endothelial cells and induce down-regulation and degradation of tight junction proteins leading to disruption of the BBB [87–90]. Similarly, Bleau et al. [91] evaluated the ability of CoV to enter the CNS, using the highly hepatotropic mouse hepatitis virus type 3 and the weakly hepatotropic mouse hepatitis type A59. The type 3-infected mice showed brain invasion that correlated with enhanced BBB permeability. The effect was associated with decreased expression of the zona occludens protein 1, the VE-cadherin, and the occludin. Since CoV are molecularly related in its mode of replication, it is speculated that other types of CoV use a similar mechanism of action to infect the brain microvascular endothelial cells [92, 93]. Importantly, it has been identified the presence of SARS-CoV-2 in the brain microvascular endothelial cells in frontal lobe tissue obtained at postmortem examination from a patient with COVID-19 [94]. Besides, viral particles and viral genome sequences of SARS-CoV have been detected in the cytoplasm of neurons of the brain, mainly in the hypothalamus and the cortex [44, 95]. This evidence suggests that SARS-CoV-2 crosses the BBB as well as others HCoV.

Therefore, infection by several respiratory viruses, including SARS-CoV-2, affects the integrity of the BBB through different mechanisms. The virus causes direct cell stress, associated with most of the cytotoxic effects that lead to degeneration of infected cells, for example, SARS-CoV induces apoptosis [96]. Endothelial cells activation as part of the inflammatory response causes an increase in the expression of proteases, such as matrix metalloproteinase, that promotes the

degradation of the tight junction proteins [97]. However, it is probable that the inflammatory response plays the most important role in the induction of the damage to BBB.

## The Inflammatory Response

The regular activity of neuroinflammation is mainly to restore the homeostasis in the brain [98]. However, prolonged CNS inflammation and systemic inflammatory response as a result of a wide variety of pathologies such as viral infections may influence the BBB integrity and further outcome in neurological disorders [99, 100]. Therefore, SARS-CoV-2 could cause damage to the BBB through the activation of the inflammatory immune response associated with a dysregulation around this process [101].

Activation of the microvascular endothelial cells has been associated with changes in BBB permeability. For example, during physiological conditions, immune cell migration into the CNS is rigorously controlled by mechanisms that operate at the level of the BBB. Notably, migration of circulating immune cells into the CNS is low and restricted to specific innate and adaptive immune cell subsets, such as lymphocytes, macrophages, and antigen presenting cells as dendritic cells that maintain immune surveillance in the CNS [102]. However, during viral infections, the migration of immune cells is increased. This is supported by histopathologic examination of the brain tissue in patients with SARS-CoV, where pathological infiltration of CD68<sup>+</sup> monocytes/macrophages and CD3<sup>+</sup> T lymphocytes has been found in the brain mesenchyme [95]. Similarly, the infiltration process, related to interactions between the  $\beta$ 1 and  $\beta$ 2 integrins expressed on leukocytes and their ligands [i.e., intercellular adhesion molecules (ICAM): ICAM-1, ICAM-2, and vascular cell adhesion molecule-1 (VCAM-1)] present on the surface of the microendothelial cells, that induce extravasation across the BBB under inflammatory conditions has been reported [103–107]. Evidence suggests that infection and activation of the microvascular endothelial cells by typical neurotrophic viruses increased endothelial adhesion molecules expression [88]. This condition facilitates the trafficking of virus-infected immune cells into the CNS via the ‘Trojan horse’ mechanism [88].

Likewise, during viral replication in the host cells, the damage is caused because SARS-CoV-2 is a cytopathic virus that induces the release of damage-associated molecular patterns (DAMPs) [108]. DAMPs are endogenous molecules released from damaged cells that interact with molecules called pattern-recognition receptor (PRR) that induce in the neighboring epithelial cells, endothelial cells, and macrophages a state of high inflammation [109].

Once the virus interacts with the host cells, the viral genome and viral proteins can also be recognized by PRRs and

activated the immune response. Different PRRs recognize SARS-CoV-2, for example, the Toll-like receptors (TLR), which are molecules expressed in many cell lines, including endothelial cells, macrophages, and dendritic cells. TLR3, TLR7, TLR8, and TLR9 induce several pathways of activation that produce proinflammatory cytokines and other antiviral molecules to control the infection. However, this response can be dysregulated and exacerbated cytokines production [110]. Also, NOD-like receptor (NLR), other PRR, activates the inflammasome complex and induces the activation state in some cell types such as macrophages and epithelial and even in the microvascular endothelial cells leading to high production of interleukin (IL)-1 $\beta$  and IL-18. Nevertheless, this mechanism needs to be studied in detail for the new CoV [111].

On the other hand, the viral RNA activates typical molecules such as the retinoic acid inducible gene 1 and the melanoma differentiation associated gene 5 and induces an antiviral state, in which interferons (IFN) are secreted (mainly IFN type I and III). Interferons are molecules important to clear the viral infection to prevent viruses from replicating [112, 113]. In patients with COVID-19, high levels of IFN, especially IFN I, are detected; this molecule blocks the viral replication in adjacent cells and produces some effects against the viral infection such as the induction of interferon-stimulated gene expression, the stimulation of cytokines production, and the activation of immune response cells (i.e., macrophages, monocytes, and neutrophils) [112, 114]. Other CoV infections have a similar response [115, 116].

Furthermore, patients infected with SARS-CoV-2 have increased levels of several cytokines and chemokines: TNF- $\alpha$ , IFN- $\gamma$ , interleukin-1 receptor antagonist (IL-1RA), IL-2, IL-6, IL-7, IL-8, IL-9, IL-10, and the granulocyte macrophage colony-stimulating factor; importantly, high levels of IL-6 have been linked to a worse prognosis in COVID-19 patients [116, 117]. This high production and misbalance of all these molecules is defined as cytokines storm (CS), which could be an essential factor to cause disruption of the BBB [110]. Interestingly, CS induces the activation of platelets, neutrophils, monocytes, and macrophages; additionally, some of these molecules can interact with the complement and the coagulation systems and contribute to the pathogenic inflammation [117].

Furthermore, some chemokines can attract some innate immune response cells such as monocytes, natural killer cells, dendritic cells, and T cells [118] and induce the production others cytokines such as the monocyte chemoattractant protein-1, the granulocyte colony-stimulating factor, the macrophages inflammatory protein 1- $\alpha$ , and IL-10 that recruit lymphocytes and monocytes and initiate the humoral response. Together, all these mechanisms can contribute to the severity of neurological symptoms of SARS-CoV-2 infection in the BBB [30].

Other physiological disturbances in COVID-19 patients such as thrombocytopenia, lymphopenia (CD8<sup>+</sup> T, CD4<sup>+</sup> T, Treg cells, and platelets), and eosinopenia have also been describing. Blood samples and spleen and lymph nodes present these types of dysregulation due to the recruited cells to the infected sites to control the viral replication (Table 3) [119, 120]. Also, several patients present high levels of D-dimer in the early stage of the infection (Table 3). This molecule is an important marker in the disorder of coagulation. It represents a thrombotic state that leads to embolic vascular events and can produce venous clots and induce brain damage [121]. Therefore, COVID-19 patients with high inflammation trigger excessive thrombin production that inhibits fibrinolysis and activates the complement pathways leading thromboinflammation, microthrombin deposition, and microvascular dysfunction associated with damage of the BBB [122, 123].

An unexplored mechanism that could produce damage in the BBB is the adaptative immune response. The generation of antibodies (Abs) against SARS-CoV-2 can cross-react with some molecules of the brain microvascular endothelial cells and produce damage through the activation of the complement system (C3 and C4 proteins). Also, Ab-dependent enhancement phenomenon can increase the infection and contribute to the injury. This process has been extensively studied in Dengue and Zika virus infection, where the Abs produced in the first exposure can cross-react in a second exposure and enhance the infection instead of neutralizing it [124, 125]. Additionally, the Abs can generate an autoimmune attack and interact with the virus forming immune complexes and induce the complement system activation [126].

Recently, some studies showed that the cellular immune response could be central to determine the disease condition.

Several viruses, including SARS-CoV-2, can activate CD4<sup>+</sup> and CD8<sup>+</sup> and induce clonal expansion, specific cell effectors, and cellular memory [127, 128]. Also, T cells can cross-react inducing a state of protection observed in unexposed people with SARS-CoV-2 [129, 130]. Finally, more studies around the interaction with SARS-CoV-2 and the host immune system need to be clarified. Research around the mechanisms involved in inflammation response can allow the development of strategies that might help to mitigate the health consequence of this pandemic.

## Neurological Implications of BBB Disruption by SARS-CoV-2

As previously discussed, multiple respiratory viruses can affect the CNS. For example, the mouse hepatitis virus induces inflammation, BBB damage, and demyelination in rat models [131]. Likewise, a case report of HCoV-OC43 detected in nasopharyngeal and cerebral spinal fluid samples from a child patient exhibited acute disseminated encephalomyelitis, a low-prevalence CNS disease that induces demyelination [132]. The H1N1 virus, the causative agent of high mortality rates, also presented neurological complications. A retrospective study of the clinical files of 55 patients infected with H1N1 detected 50% of visible neurological symptoms [133]. Interestingly, most patients with neurological manifestations due to H1N1 infection manifested brain edema [134]. Importantly, in autopsy studies, patients with SARS-CoV showed endothelial activation associated with the loss of cerebral vascular integrity displaying multifocal hemorrhage [135]. Histological examination of brain tissue specimens of patients with SARS-CoV infection also showed neuronal

**Table 3** Laboratory findings in neurological manifestation in COVID-19

Author	Manifestation	Laboratory finding	Reference
Avula et al.	Stroke	- Lymphopenia - Elevated C-reactive [26 mg/dl (0.04 mg/dl)] - Elevated D-dimer [mean 8704 ng/ml (< 880 ng/ml)] - Elevated lactate dehydrogenase (712 U/L)	[46, 48]
Oxley et al.		- D-dimer [5972 ng/ml (0–500 ng/ml)]	
Moringuchi et al.	Meningoencephalitis	- Elevated neutrophil - Increased C-reactive protein	[45]
Guitierrez-Ortiz et al.	Guillain-Barré syndrome	- Lymphopenia (1000 cells/ $\mu$ l) - Leucopenia (3100/cells/ $\mu$ l) - Elevated C-reactive protein (2.8 mg/dl) - Positive GD1b-IgG ganglioside antibody	[50, 51, 54]
Virani et al.		- Lymphopenia and thrombocytopenia	
Zhao et al.		- Lymphocytopenia [ $0.52 \times 10^9/L$ ( $1.1\text{--}3.2 \times 10^9/L$ )] - Thrombocytopenia [ $113 \times 10^9/L$ ( $125\text{--}3000 \times 10^9/L$ )]	



degeneration, necrosis, edema, extensive glial cell hyperplasia, and cellular infiltration of the vascular walls by monocytes and lymphocytes [40].

With this background, several studies have attempted to characterize the neurological manifestations of SARS-CoV-2. An increasing number of individual case reports have emerged describing acute neurological disorders ranging from Guillain-Barré syndrome and acute myelitis to acute hemorrhagic necrotizing encephalopathy [136]. Although the long-term neurological implications of SARS-CoV-2 infection are still unknown, important clues suggest that complications of the disease are related to CNS invasion by damaging the BBB.

### Neurological Implications of BBB Disruption by SARS-CoV-2 in Long-Term Dementia

There is a very complex interaction between the brain cells and the cerebral vasculature. Consequently, preservation of the cerebrovascular function and its integrity has a central role in this sophisticated communication. Additionally, any derangements can have deleterious acute and chronic consequences such as the development of neurodegenerative diseases and dementia [137].

Infectious agents have been suspected as contributing factors to dementia, especially in Alzheimer's disease (AD). Interestingly, the BBB disruption appears to be an early feature of this disease [138]. For instance, Bell et al. [139] demonstrated that BBB breakdown was derived in neurotoxic proteins infiltration (e.g., amyloid- $\beta$  peptides, the hallmark of AD), affecting neurons and either initiating or exacerbating neurodegeneration. Also, Ueno et al. [140] using experimental animal models exhibiting some phenotypes of vascular dementia showed that BBB damage might be related to amyloid- $\beta$  peptides accumulation. Accordingly, damage induced to the BBB by infectious agents might trigger neurodegenerative diseases in predisposed patients [141]. Therefore, viral infections such as SARS-CoV-2 could be associated with an increased risk of AD development and a faster rate of cognitive decline in older populations.

AD in systemic virus infection is an example of a condition that is primarily neurodegenerative; however, in many cases, it is not clear whether BBB changes are the cause or the effect of a neuropathology. Furthermore, it is possible that the BBB anomalies and the disease drive each other in a self-perpetuating manner, contributing to damage progression [142]. As mentioned, acute and chronic systemic inflammation accelerates the progress of AD [143]. Also, a 5-year follow-up study showed that viral infections, like the induced by cytomegalovirus, are linked with faster cognitive decline and development of AD [144]. Furthermore, systemic inflammation in AD is associated with several BBB changes, which

further favor amyloid- $\beta$  peptides accumulation into the brain because the injury alters the influx and efflux of the peptides [145]; correspondingly, systemic inflammation accelerates hippocampal amyloid- $\beta$  peptides deposition [146]. Therefore, dysfunction of the BBB might play a significant role in the pathogenesis of vascular dementia induced by SARS-CoV-2 infection, but further observations are needed.

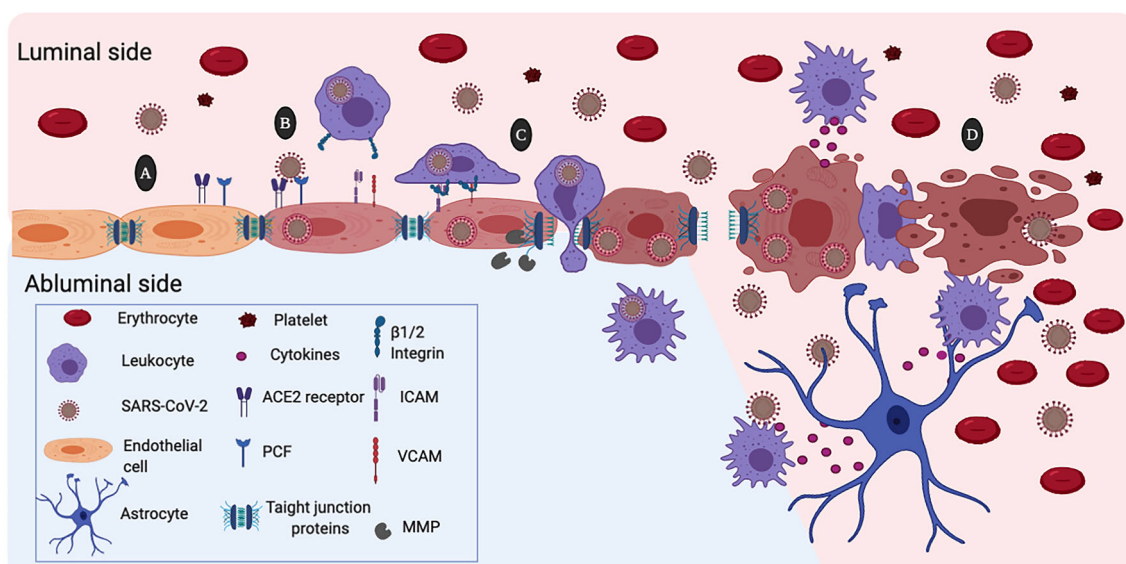
Additionally, damage to the BBB is not the only mechanism where SARS-CoV-2 infection can result in dementia. Some data suggest that amyloid- $\beta$  protein possesses antimicrobial and antiviral activity in vitro [147]. Therefore, the presence of insoluble deposits of amyloid- $\beta$  peptides could be a factor (e.g., genetic predisposing) that alter the response to viral SARS-CoV-2 infection. Thus, it is conceivable that SARS-CoV-2 contributes to BBB damage and also creates a feed-forward effect whereby pathogen-induced damage favors a further spread of the pathogen's transit zones and even the sequential development of the pathology associated to AD [138].

On the other hand, individuals with AD are more vulnerable to the effects of peripheral infection, especially SARS-CoV-2, mainly due to the association of physical comorbidities. It is more probable that these individuals have cardiovascular disease, diabetes, and pneumonia [148]. Besides, there is an overall decrease in naive T cell diversity after the age of 65 [149–151]; this can limit the capacity of the individual to induce a sufficient immune response to infection. Together, these data indicate the vulnerability of these patients to infection.

### Neurological Implications of BBB Disruption by SARS-CoV-2 in Multiple Sclerosis

Multiple sclerosis (MS) is a chronic inflammatory disease of the CNS, characterized by several pathological processes, including inflammation, trans-endothelial migration, demyelination, axonopathy, and neuron loss mediated by immune cells [152]. MS represents a neurological disease where an infectious agent plays a triggering role, being viruses the most likely culprit in genetically predisposed individuals [141]. There is a presumption that several neurotropic viruses using similar mechanisms could be involved in MS pathogenesis [153]. Some viruses that have been implicated in the development of MS include herpes viruses, paramyxoviruses, picornaviruses, as well as viruses that classically affect the respiratory system such as influenza virus [154].

A critical step in the pathogenesis of MS is the infiltration of autoreactive CD4<sup>+</sup> T-lymphocytes into the CNS after activation in the periphery. Evaluation of proinflammatory cytokines (IL-1 $\beta$ , IL-6, and IL-8), Th1 cytokines (IFN- $\gamma$ , TNF- $\alpha$ ,



**Fig. 2** Possible mechanism of damage to the blood-brain barrier (BBB) by the action of SARS-CoV-2. **a** Expression of angiotensin-converting enzyme 2 (ACE2) and the pro-protein convertase furin (PCF) in the membrane of the brain microvascular endothelial cells facilitates SARS-CoV-2 infection. **b** SARS-CoV2 infection activates the brain microendothelial cells inducing high expression of the vascular and the intercellular adhesion molecules (VCAM and ICAM). Likewise, SARS-CoV-2 induces the expression and activation matrix metalloproteinases (MMP) that degrade tight junctions proteins. **c** Recognition of ICAM and ICAM through the  $\beta 1$  and  $\beta 2$  integrins causes binding of circulating

leukocytes to endothelial cells that lead transcellular extravasation. This process facilitate viral entrance to the cerebral parenchyma through the “Trojan horse” mechanism. **d** SARS-CoV-2 viral replication induces endothelial cell contraction and lysis. Increased permeability of the BBB allows extravasation of plasma proteins and blood cells. Activation of leukocytes and platelets contributes to the BBB damage. Besides, endothelial cell death disturbs the microenvironment of the brain parenchyma allowing free passage of the SARS-CoV-2 virus and infection of other cells of the central nervous system

IL-2, and IL-12), and Th2 cytokines (IL-4, IL-5, and IL-10) in sera collected from SARS patients within 2 days of hospital admission showed a substantial elevation of IL-12, IL-6, IL-8, IL-10, and IFN- $\gamma$  [155]. Also, Sonar et al. [156] revealed that IFN- $\gamma$  favored the trans-endothelial migration of CD4<sup>+</sup> T cells from the apical (luminal side) to the basal side (abluminal side) of the endothelial monolayer (Fig. 2). Besides, using multicolor immunofluorescence and confocal microscopic analysis, these authors indicated that IFN- $\gamma$  induce relocalization of ICAM-1, platelet endothelial cell adhesion molecule-1, zona occludens protein 1, and VE-cadherin in the endothelial cells. These findings reveal that the IFN- $\gamma$  produced during the response to infection and inflammation could contribute to the disruption of the BBB and promote CD4<sup>+</sup> T cells brain migration. Interestingly, BBB disruption appears in experimental autoimmune encephalomyelitis, a typical MS model, and the clinical severity is linked to the degree of BBB integrity [157]. Furthermore, imaging studies showed BBB disruption in normal-appearing white matter in MS [158]. This data is important since BBB breakdown precedes the development of new MS lesions [159]. In summary, it is possible that the damage caused by SARS-CoV-2 infection to the endothelial cells also causes loss of the BBB integrity, favoring MS progression.

## Conclusion

Recent information has shown the SARS-CoV-2 ability to infect CNS cells, especially the brain microvascular endothelial cells of the BBB. This situation explains the neurological symptoms observed during infection and reveals the possible consequences of viral infection. Although it is too early to elucidate the long-term side effects of SARS-CoV-2 infection, the background obtained with other respiratory viruses suggests that SARS-CoV-2 might induce permanent sequelae in the CNS through damage to the BBB, including dementia in predisposed patients. Furthermore, the proinflammatory state, due to viral infection seems to be the general mechanism involved in the induction of BBB damage. However, further studies are necessary to confirm this evidence.

**Acknowledgments** We would like to thank the Consejo Nacional de Ciencia y Tecnología (CONACYT) for the scholarship No. 413994 assigned to Iván M. Alquisiras Burgos, doctoral student from Programa de Doctorado en Ciencias Biomédicas, Universidad Nacional Autónoma de México (UNAM). We also thank the postdoctoral fellowship program DGAPA-UNAM assigned to Irlanda Peralta Arrieta at FES-Iztacala, UBIMED, and postdoctoral fellowship N° SECTEI/138/2019 from Mexico City assigned to Luis Alonso Palomares.

**Authors' Contributions** All authors contributed substantially to research data and discussion of the content, wrote and reviewed the article, and edited the manuscript before submission.

## Compliance with Ethical Standards

**Conflict of Interest** The authors declare that they have no conflict of interests.

## References

- Cui J, Li F, Shi Z-L (2019) Origin and evolution of pathogenic coronaviruses. *Nat Rev Microbiol* 17(3):181–192. <https://doi.org/10.1038/s41579-018-0118-9>
- Fomi D, Cagliani R, Clerici M, Sironi M (2017) Molecular evolution of human coronavirus genomes. *Trends Microbiol* 25(1):35–48. <https://doi.org/10.1016/j.tim.2016.09.001>
- Su S, Wong G, Shi W, Liu J, Lai ACK, Zhou J, Liu W, Bi Y et al (2016) Epidemiology, genetic recombination, and pathogenesis of coronaviruses. *Trends Microbiol* 24(6):490–502. <https://doi.org/10.1016/j.tim.2016.03.003>
- Drosten C, Günther S, Preiser W, van der Werf S, Brodt H-R, Becker S, Rabenau H, Panning M et al (2003) Identification of a novel coronavirus in patients with severe acute respiratory syndrome. *N Engl J Med* 348(20):1967–1976. <https://doi.org/10.1056/NEJMoa030747>
- Zaki AM, van Boheemen S, Bestebroer TM, Osterhaus ADME, Fouchier RAM (2012) Isolation of a novel coronavirus from a man with pneumonia in Saudi Arabia. *N Engl J Med* 367(19):1814–1820. <https://doi.org/10.1056/NEJMoa1211721>
- Wu F, Zhao S, Yu B, Chen Y-M, Wang W, Song Z-G, Hu Y, Tao Z-W et al (2020) A new coronavirus associated with human respiratory disease in China. *Nature* 579(7798):265–269. <https://doi.org/10.1038/s41586-020-2008-3>
- Chan JF-W, Yuan S, Kok K-H, To KK-W, Chu H, Yang J, Xing F, Liu J et al (2020) A familial cluster of pneumonia associated with the 2019 novel coronavirus indicating person-to-person transmission: A study of a family cluster. *Lancet* 395(10223):514–523. [https://doi.org/10.1016/S0140-6736\(20\)30154-9](https://doi.org/10.1016/S0140-6736(20)30154-9)
- Zhou P, Yang X-L, Wang X-G, Hu B, Zhang L, Zhang W, Si H-R, Zhu Y et al (2020) A pneumonia outbreak associated with a new coronavirus of probable bat origin. *Nature* 579(7798):270–273. <https://doi.org/10.1038/s41586-020-2012-7>
- Lam TT-Y, Shum MH-H, Zhu H-C, Tong Y-G, Ni X-B, Liao Y-S, Wei W, Cheung WY-M et al (2020) Identification of 2019-nCoV related coronaviruses in Malayan pangolins in southern China. *bioRxiv* 2020.2002.2013:945485. <https://doi.org/10.1101/2020.02.13.945485>
- Xiao K, Zhai J, Feng Y, Zhou N, Zhang X, Zou J-J, Li N, Guo Y et al (2020) Isolation of SARS-CoV-2-related coronavirus from Malayan pangolins. *Nature* 583(7815):286–289. <https://doi.org/10.1038/s41586-020-2313-x>
- Zhang T, Wu Q, Zhang Z (2020) Probable pangolin origin of SARS-CoV-2 associated with the COVID-19 outbreak. *Curr Biol* 30(7):1346–1351.e1342
- Liu Y, Gayle AA, Wilder-Smith A, Rocklöv J (2020) The reproductive number of COVID-19 is higher compared to SARS coronavirus. *J Travel Med* 27(2). <https://doi.org/10.1093/jtm/taaa021>
- Chen J (2020) Pathogenicity and transmissibility of 2019-nCoV—A quick overview and comparison with other emerging viruses. *Microbes Infect* 22(2):69–71. <https://doi.org/10.1016/j.micinf.2020.01.004>
- Liu J, Liao X, Qian S, Yuan J, Wang F, Liu Y, Wang Z, Wang FS et al (2020) Community transmission of severe acute respiratory syndrome coronavirus 2, Shenzhen, China, 2020. *Emerg Infect Dis* 26(6):1320–1323. <https://doi.org/10.3201/eid2606.200239>
- Ong SWX, Tan YK, Chia PY, Lee TH, Ng OT, Wong MSY, Marimuthu K (2020) Air, surface environmental, and personal protective equipment contamination by severe acute respiratory syndrome coronavirus 2 (SARS-CoV-2) from a symptomatic patient. *JAMA* 323(16):1610–1612. <https://doi.org/10.1001/jama.2020.3227>
- van Doremalen N, Bushmaker T, Morris DH, Holbrook MG, Gamble A, Williamson BN, Tamin A, Harcourt JL et al (2020) Aerosol and surface stability of SARS-CoV-2 as compared with SARS-CoV-1. *N Engl J Med* 382(16):1564–1567. <https://doi.org/10.1056/NEJMc2004973>
- Xia J, Tong J, Liu M, Shen Y, Guo D (2020) Evaluation of coronavirus in tears and conjunctival secretions of patients with SARS-CoV-2 infection. *J Med Virol* 92(6):589–594. <https://doi.org/10.1002/jmv.25725>
- Xiao F, Tang M, Zheng X, Liu Y, Li X, Shan H (2020) Evidence for gastrointestinal infection of SARS-CoV-2. *Gastroenterology* 158(6):1831–1833.e1833. <https://doi.org/10.1053/j.gastro.2020.02.055>
- Chen N, Zhou M, Dong X, Qu J, Gong F, Han Y, Qiu Y, Wang J et al (2020) Epidemiological and clinical characteristics of 99 cases of 2019 novel coronavirus pneumonia in Wuhan, China: a descriptive study. *Lancet* 395(10223):507–513. [https://doi.org/10.1016/S0140-6736\(20\)30211-7](https://doi.org/10.1016/S0140-6736(20)30211-7)
- Li Q, Guan X, Wu P, Wang X, Zhou L, Tong Y, Ren R, Leung KSM et al (2020) Early transmission dynamics in Wuhan, China, of novel coronavirus-infected pneumonia. *N Engl J Med* 382(13):1199–1207. <https://doi.org/10.1056/NEJMoa2001316>
- Wang D, Hu B, Hu C, Zhu F, Liu X, Zhang J, Wang B, Xiang H et al (2020) Clinical characteristics of 138 hospitalized patients with 2019 novel coronavirus-infected pneumonia in Wuhan, China. *JAMA* 323(11):1061–1069. <https://doi.org/10.1001/jama.2020.1585>
- Wu Z, McGoogan JM (2020) Characteristics of and important lessons from the coronavirus disease 2019 (COVID-19) outbreak in China: summary of a report of 72 314 cases from the Chinese Center for Disease Control and Prevention. *JAMA* 323(13):1239–1242. <https://doi.org/10.1001/jama.2020.2648>
- Zhou F, Yu T, Du R, Fan G, Liu Y, Liu Z, Xiang J, Wang Y et al (2020) Clinical course and risk factors for mortality of adult inpatients with COVID-19 in Wuhan, China: a retrospective cohort study. *Lancet* 395(10229):1054–1062. [https://doi.org/10.1016/S0140-6736\(20\)30566-3](https://doi.org/10.1016/S0140-6736(20)30566-3)
- Chen Z-M, Fu J-F, Shu Q (2020) New coronavirus: new challenges for pediatricians. *World J Pediatr* 16(3):222–222. <https://doi.org/10.1007/s12519-020-00346-4>
- Chen Z-M, Fu J-F, Shu Q, Chen Y-H, Hua C-Z, Li F-B, Lin R, Tang L-F et al (2020) Diagnosis and treatment recommendations for pediatric respiratory infection caused by the 2019 novel coronavirus. *World J Pediatr* 16(3):240–246. <https://doi.org/10.1007/s12519-020-00345-5>
- Sun D, Li H, Lu X-X, Xiao H, Ren J, Zhang F-R, Liu Z-S (2020) Clinical features of severe pediatric patients with coronavirus disease 2019 in Wuhan: a single center's observational study. *World J Pediatr* 16(3):251–259. <https://doi.org/10.1007/s12519-020-00354-4>
- Wei M, Yuan J, Liu Y, Fu T, Yu X, Zhang Z-J (2020) Novel coronavirus infection in hospitalized infants under 1 year of age in China. *JAMA* 323(13):1313–1314. <https://doi.org/10.1001/jama.2020.2131>
- W-j G, Ni Z-y HY, Liang W-h, C-q O, He J-x, Liu L, Shan H, C-l L et al (2020) Clinical characteristics of coronavirus disease 2019

- in China. *N Engl J Med* 382(18):1708–1720. <https://doi.org/10.1056/NEJMoa2002032>
29. Goyal P, Choi JJ, Pinheiro LC, Schenck EJ, Chen R, Jabri A, Satlin MJ, Campion TR et al (2020) Clinical characteristics of Covid-19 in New York City. *N Engl J Med* 382(24):2372–2374. <https://doi.org/10.1056/NEJMc2010419>
  30. Huang C, Wang Y, Li X, Ren L, Zhao J, Hu Y, Zhang L, Fan G et al (2020) Clinical features of patients infected with 2019 novel coronavirus in Wuhan, China. *Lancet* 395(10223):497–506. [https://doi.org/10.1016/S0140-6736\(20\)30183-5](https://doi.org/10.1016/S0140-6736(20)30183-5)
  31. Wan S, Xiang Y, Fang W, Zheng Y, Li B, Hu Y, Lang C, Huang D et al (2020) Clinical features and treatment of COVID-19 patients in Northeast Chongqing. *J Med Virol* 92(7):797–806. <https://doi.org/10.1002/jmv.25783>
  32. Chen X, Tang Y, Mo Y, Li S, Lin D, Yang Z, Yang Z, Sun H et al (2020) A diagnostic model for coronavirus disease 2019 (COVID-19) based on radiological semantic and clinical features: A multi-center study. *Eur Radiol*. <https://doi.org/10.1007/s00330-020-06829-2>
  33. Cheng Z, Lu Y, Cao Q, Qin L, Pan Z, Yan F, Yang W (2020) Clinical features and chest CT manifestations of coronavirus disease 2019 (COVID-19) in a single-center study in Shanghai, China. *Am J Roentgenol* 215(1):121–126. <https://doi.org/10.2214/AJR.20.22959>
  34. Mao L, Jin H, Wang M, Hu Y, Chen S, He Q, Chang J, Hong C et al (2020) Neurologic manifestations of hospitalized patients with coronavirus disease 2019 in Wuhan, China. *JAMA Neurol* 77(6):1–9. <https://doi.org/10.1001/jamaneurol.2020.1127>
  35. Eliezer M, Hautefort C, Hamel A-L, Verillaud B, Herman P, Houdart E, Eloit C (2020) Sudden and complete olfactory loss of function as a possible symptom of COVID-19. *JAMA Otolaryngol Head Neck Surg* 146(7):674–675. <https://doi.org/10.1001/jamaoto.2020.0832>
  36. Klopfenstein T, Kadiane-Oussou NJ, Toko L, Royer PY, Lepiller Q, Gendrin V, Zayet S (2020) Features of anosmia in COVID-19. *Med Mal Infect* 50(5):436–439. <https://doi.org/10.1016/j.medmal.2020.04.006>
  37. Paterson RW, Brown RL, Benjamin L, Nortley R, Wiethoff S, Bharucha T, Jayaseelan DL, Kumar G et al (2020) The emerging spectrum of COVID-19 neurology: Clinical, radiological and laboratory findings. *Brain J Neurol* 8:awaa240. <https://doi.org/10.1093/brain/awaa240>
  38. Zubair AS, McAlpine LS, Gardin T, Farhadian S, Kuruvilla DE, Spudich S (2020) Neuropathogenesis and neurologic manifestations of the coronaviruses in the age of coronavirus disease 2019: A review. *JAMA Neurol* 77(8):1018–1027. <https://doi.org/10.1001/jamaneurol.2020.2065>
  39. Bohmwald K, Gálvez NMS, Ríos M, Kalergis AM (2018) Neurologic alterations due to respiratory virus infections. *Front Cell Neurosci* 12(386). <https://doi.org/10.3389/fncel.2018.00386>
  40. Ding Y, Wang H, Shen H, Li Z, Geng J, Han H, Cai J, Li X et al (2003) The clinical pathology of severe acute respiratory syndrome (SARS): A report from China. *J Pathol* 200(3):282–289. <https://doi.org/10.1002/path.1440>
  41. Montalvan V, Lee J, Bueso T, De Toledo J, Rivas K (2020) Neurological manifestations of COVID-19 and other coronavirus infections: a systematic review. *Clin Neurol Neurosurg* 194:105921. <https://doi.org/10.1016/j.clineuro.2020.105921>
  42. Arbour N, Côté G, Lachance C, Tardieu M, Cashman NR, Talbot PJ (1999) Acute and persistent infection of human neural cell lines by human coronavirus OC43. *J Virol* 73(4):3338–3350. <https://doi.org/10.1128/JVI.73.4.3338-3350.1999>
  43. Jacomy H, Talbot PJ (2003) Vacuolating encephalitis in mice infected by human coronavirus OC43. *Virology* 315(1):20–33. [https://doi.org/10.1016/S0042-6822\(03\)00323-4](https://doi.org/10.1016/S0042-6822(03)00323-4)
  44. Gu J, Gong E, Zhang B, Zheng J, Gao Z, Zhong Y, Zou W, Zhan J et al (2005) Multiple organ infection and the pathogenesis of SARS. *J Exp Med* 202(3):415–424. <https://doi.org/10.1084/jem.20050828>
  45. Moriguchi T, Harii N, Goto J, Harada D, Sugawara H, Takamino J, Ueno M, Sakata H et al (2020) A first case of meningitis/encephalitis associated with SARS-coronavirus-2. *Int J Infect Dis* 94:55–58. <https://doi.org/10.1016/j.ijid.2020.03.062>
  46. Avula A, Nalleballe K, Narula N, Sapozhnikov S, Dandu V, Toom S, Glaser A, Elsayegh D (2020) COVID-19 presenting as stroke. *Brain Behav Immun* 87:115–119. <https://doi.org/10.1016/j.bbi.2020.04.077>
  47. Al Saiegh F, Ghosh R, Leibold A, Avery MB, Schmidt RF, Theofanis T, Mouchtouris N, Philipp L et al (2020) Status of SARS-CoV-2 in cerebrospinal fluid of patients with COVID-19 and stroke. *Journal of neurology, neurosurgery & Psychiatry* 91(8):846–848. <https://doi.org/10.1136/jnnp-2020-323522>
  48. Oxley TJ, Mocco J, Majidi S, Kellner CP, Shoirah H, Singh IP, De Leacy RA, Shigematsu T et al (2020) Large-vessel stroke as a presenting feature of Covid-19 in the young. *N Engl J Med* 382(20):e60. <https://doi.org/10.1056/NEJMc2009787>
  49. Duong L, Xu P, Liu A (2020) Meningoencephalitis without respiratory failure in a young female patient with COVID-19 infection in downtown Los Angeles, early April 2020. *Brain Behav Immun* 87:33–33. <https://doi.org/10.1016/j.bbi.2020.04.024>
  50. Gutiérrez-Ortiz C, Méndez-Guerrero A, Rodrigo-Rey S, San Pedro-Murillo E, Bermejo-Guerrero L, Gordo-Mañas R, de Aragón-Gómez F, Benito-León J (2020) Miller fisher syndrome and polyneuritis cranialis in COVID-19. *Neurology* 95(5):e601–e605. <https://doi.org/10.1212/wnl.00000000000009619>
  51. Zhao H, Shen D, Zhou H, Liu J, Chen S (2020) Guillain-Barre syndrome associated with SARS-CoV-2 infection: causality or coincidence? *Lancet Neurol* 19(5):383–384. [https://doi.org/10.1016/S1474-4422\(20\)30109-5](https://doi.org/10.1016/S1474-4422(20)30109-5)
  52. Sedaghat Z, Karimi N (2020) Guillain Barre syndrome associated with COVID-19 infection: a case report. *J Clin Neurosci* 76:233–235. <https://doi.org/10.1016/j.jocn.2020.04.062>
  53. Toscano G, Palmerini F, Ravaglia S, Ruiz L, Invernizzi P, Cuzzoni MG, Franciotta D, Baldanti F et al (2020) Guillain-Barré syndrome associated with SARS-CoV-2. *N Engl J Med* 382(26):2574–2576. <https://doi.org/10.1056/NEJMc2009191>
  54. Virani A, Rabold E, Hanson T, Haag A, Elrufay R, Cheema T, Balaan M, Bhanot N (2020) Guillain-Barré syndrome associated with SARS-CoV-2 infection. *IDCases* 20:e00771–e00771. <https://doi.org/10.1016/j.idcr.2020.e00771>
  55. Poyiadji N, Shahin G, Noujaim D, Stone M, Patel S, Griffith B (2020) COVID-19–associated acute hemorrhagic necrotizing encephalopathy: imaging features. *Radiology* 296(2):E119–E120. <https://doi.org/10.1148/radiol.2020201187>
  56. Dubé M, Le Coupance A, Wong AHM, Rini JM, Desforges M, Talbot PJ (2018) Axonal transport enables neuron-to-neuron propagation of human coronavirus OC43. *J Virol* 92(17):e00404–e00418. <https://doi.org/10.1128/jvi.00404-18>
  57. Netland J, Meyerholz DK, Moore S, Cassell M, Perlman S (2008) Severe acute respiratory syndrome coronavirus infection causes neuronal death in the absence of encephalitis in mice transgenic for human ACE2. *J Virol* 82(15):7264–7275. <https://doi.org/10.1128/jvi.00737-08>
  58. Spindler KR, Hsu TH (2012) Viral disruption of the blood-brain barrier. *Trends Microbiol* 20(6):282–290. <https://doi.org/10.1016/j.tim.2012.03.009>
  59. Albright AV, Soldan SS, González-Scarano F (2003) Pathogenesis of human immunodeficiency virus-induced neurological disease. *J Neuro-Oncol* 9(2):222–227. <https://doi.org/10.1080/13550280390194073>

60. Desforges M, Miletti TC, Gagnon M, Talbot PJ (2007) Activation of human monocytes after infection by human coronavirus 229E. *Virus Res* 130(1–2):228–240. <https://doi.org/10.1016/j.virusres.2007.06.016>
61. Li Z, Liu T, Yang N, Han D, Mi X, Li Y, Liu K, Vuylsteke A et al (2020) Neurological manifestations of patients with COVID-19: potential routes of SARS-CoV-2 neuroinvasion from the periphery to the brain. *Front Med*:1–9. <https://doi.org/10.1007/s11684-020-0786-5>
62. Walls AC, Park Y-J, Tortorici MA, Wall A, McGuire AT, Veesler D (2020) Structure, function, and antigenicity of the SARS-CoV-2 spike glycoprotein. *Cell* 181(2):281–292.e286. <https://doi.org/10.1016/j.cell.2020.02.058>
63. Li W, Zhang C, Sui J, Kuhn JH, Moore MJ, Luo S, Wong S-K, Huang IC et al (2005) Receptor and viral determinants of SARS-coronavirus adaptation to human ACE2. *EMBO J* 24(8):1634–1643. <https://doi.org/10.1038/sj.emboj.7600640>
64. Abiodun OA, Ola MS (2020) Role of brain renin angiotensin system in neurodegeneration: An update. *Saudi J Biol Sci* 27(3):905–912. <https://doi.org/10.1016/j.sjbs.2020.01.026>
65. Ou Z, Jiang T, Gao Q, Tian Y-Y, Zhou J-S, Wu L, Shi J-Q, Zhang Y-D (2016) Mitochondrial-dependent mechanisms are involved in angiotensin II-induced apoptosis in dopaminergic neurons. *J Renin-Angiotensin-Aldosterone Syst* 17(4):1470320316672349. <https://doi.org/10.1177/1470320316672349>
66. Chen R, Wang K, Yu J, Chen Z, Wen C, Xu Z (2020) The spatial and cell-type distribution of SARS-CoV-2 receptor ACE2 in human and mouse brain. *bioRxiv*:2020.2004.2007.030650. doi: <https://doi.org/10.1101/2020.04.07.030650>
67. Wang W, Xu Y, Gao R, Lu R, Han K, Wu G, Tan W (2020) Detection of SARS-CoV-2 in different types of clinical specimens. *JAMA* 323(18):1843–1844. <https://doi.org/10.1001/jama.2020.3786>
68. Lavoie JL, Cassell MD, Gross KW, Sigmund CD (2004) Adjacent expression of renin and angiotensinogen in the rostral ventrolateral medulla using a dual-reporter transgenic model. *Hypertension* 43(5):1116–1119. <https://doi.org/10.1161/01.hyp.0000125143.73301.94>
69. Stornetta RL, Hawelu-Johnson CL, Guyenet PG, Lynch KR (1988) Astrocytes synthesize angiotensinogen in brain. *Science (New York, NY)* 242(4884):1444–1446. <https://doi.org/10.1126/science.3201232>
70. Dzau VJ, Ingelfinger J, Pratt RE, Ellison KE (1986) Identification of renin and angiotensinogen messenger RNA sequences in mouse and rat brains. *Hypertension* 8(6):544–548. <https://doi.org/10.1161/01.HYP.8.6.544>
71. Gembardt F, Stermer-Kock A, Imboden H, Spaltheholz M, Reibitz F, Schultheiss H-P, Siems W-E, Walther T (2005) Organ-specific distribution of ACE2 mRNA and correlating peptidase activity in rodents. *Peptides* 26(7):1270–1277. <https://doi.org/10.1016/j.peptides.2005.01.009>
72. Harmer D, Gilbert M, Borman R, Clark KL (2002) Quantitative mRNA expression profiling of ACE 2, a novel homologue of angiotensin converting enzyme. *FEBS Lett* 532(1):107–110. [https://doi.org/10.1016/S0014-5793\(02\)03640-2](https://doi.org/10.1016/S0014-5793(02)03640-2)
73. Chappell MC, Brosnihan KB, Diz DI, Ferrario CM (1989) Identification of angiotensin-(1-7) in rat brain. Evidence for differential processing of angiotensin peptides. *J Biol Chem* 264(28):16518–16523
74. Hamming I, Timens W, Bulthuis MLC, Lely AT, Navis GJ, van Goor H (2004) Tissue distribution of ACE2 protein, the functional receptor for SARS coronavirus. A first step in understanding SARS pathogenesis. *J Pathol* 203(2):631–637. <https://doi.org/10.1002/path.1570>
75. Bodiga VL, Bodiga S (2013) Renin angiotensin system in cognitive function and dementia. *Asian J Neurosci* 2013:102602. <https://doi.org/10.1155/2013/102602>
76. Gowrisankar YV, Clark MA (2016) Angiotensin II regulation of angiotensin-converting enzymes in spontaneously hypertensive rat primary astrocyte cultures. *J Neurochem* 138(1):74–85. <https://doi.org/10.1111/jnc.13641>
77. Albini A, Di Guardo G, Noonan DM, Lombardo M (2020) The SARS-CoV-2 receptor, ACE-2, is expressed on many different cell types: implications for ACE-inhibitor- and angiotensin II receptor blocker-based cardiovascular therapies. *Intern Emerg Med* 15(5):759–766. <https://doi.org/10.1007/s11739-020-02364-6>
78. Bestle D, Heindl MR, Limburg H, van TVL, Pilgram O, Moulton H, Stein DA, Harges K, Eickmann M, Dolnik O, Rohde C, Becker S, Klenk H-D, Garten W, Steinmetzer T, Böttcher-Friebertshäuser E (2020) TMPRSS2 and furin are both essential for proteolytic activation and spread of SARS-CoV-2 in human airway epithelial cells and provide promising drug targets. *bioRxiv*:2020.2004.2015.042085. doi:<https://doi.org/10.1101/2020.04.15.042085>
79. Shang J, Ye G, Shi K, Wan Y, Luo C, Aihara H, Geng Q, Auerbach A et al (2020) Structural basis of receptor recognition by SARS-CoV-2. *Nature* 581(7807):221–224. <https://doi.org/10.1038/s41586-020-2179-y>
80. Thomas G (2002) Furin at the cutting edge: from protein traffic to embryogenesis and disease. *Nat Rev Mol Cell Biol* 3(10):753–766. <https://doi.org/10.1038/nrm934>
81. Jin X, Xu K, Jiang P, Lian J, Hao S, Yao H, Jia H, Zhang Y et al (2020) Virus strain from a mild COVID-19 patient in Hangzhou represents a new trend in SARS-CoV-2 evolution potentially related to Furin cleavage site. *Emerg Microbes Infect* 9(1):1474–1488. <https://doi.org/10.1080/22221751.2020.1781551>
82. Cheng J, Zhao Y, Xu G, Zhang K, Jia W, Sun Y, Zhao J, Xue J et al (2019) The S2 subunit of QX-type infectious bronchitis coronavirus spike protein is an essential determinant of Neurotropism. *Viruses* 11(10):972. <https://doi.org/10.3390/v11100972>
83. Le Coupanec A, Desforges M, Meessen-Pinard M, Dubé M, Day R, Seidah NG, Talbot PJ (2015) Cleavage of a neuroinvasive human respiratory virus spike glycoprotein by proprotein convertases modulates neurovirulence and virus spread within the central nervous system. *PLoS Pathog* 11(11):e1005261–e1005261. <https://doi.org/10.1371/journal.ppat.1005261>
84. Keaney J, Campbell M (2015) The dynamic blood–brain barrier. *FEBS J* 282(21):4067–4079. <https://doi.org/10.1111/febs.13412>
85. Besancon E, Guo S, Lok J, Tymianski M, Lo EH (2008) Beyond NMDA and AMPA glutamate receptors: Emerging mechanisms for ionic imbalance and cell death in stroke. *Trends Pharmacol Sci* 29(5):268–275. <https://doi.org/10.1016/j.tips.2008.02.003>
86. O'Donnell ME (2014) Chapter four - blood–brain barrier Na transporters in ischemic stroke. In: Davis TP (ed) *Advances in Pharmacology*, vol 71. Academic press, Cambridge, pp. 113–146. <https://doi.org/10.1016/bs.apha.2014.06.011>
87. Chiu C-F, Chu L-W, Liao I-C, Simanjuntak Y, Lin Y-L, Juan C-C, Ping Y-H (2020) The mechanism of the Zika virus crossing the placental barrier and the blood-brain barrier. *Front Microbiol* 11(214). <https://doi.org/10.3389/fmicb.2020.00214>
88. Verma S, Lo Y, Chapagain M, Lum S, Kumar M, Gurjav U, Luo H, Nakatsuka A et al (2009) West Nile virus infection modulates human brain microvascular endothelial cells tight junction proteins and cell adhesion molecules: Transmigration across the in vitro blood-brain barrier. *Virology* 385(2):425–433. <https://doi.org/10.1016/j.virol.2008.11.047>
89. Leda AR, Bertrand L, Andras IE, El-Hage N, Nair M, Toborek M (2019) Selective disruption of the blood-brain barrier by Zika

- virus. *Front Microbiol* 10:2158. <https://doi.org/10.3389/fmicb.2019.02158>
90. Wells AI, Coyne CB (2018) Type III interferons in antiviral defenses at barrier surfaces. *Trends Immunol* 39(10):848–858. <https://doi.org/10.1016/j.it.2018.08.008>
  91. Bleau C, Filliol A, Samson M, Lamontagne L (2015) Brain invasion by mouse hepatitis virus depends on impairment of tight junctions and beta interferon production in brain microvascular endothelial cells. *J Virol* 89(19):9896–9908. <https://doi.org/10.1128/jvi.01501-15>
  92. Desforges M, Le Coupanec A, Brison E, Meessen-Pinard M, Talbot PJ (2014) Neuroinvasive and neurotropic human respiratory coronaviruses: potential neurovirulent agents in humans. *Adv Exp Med Biol* 807:75–96. [https://doi.org/10.1007/978-81-322-1777-0\\_6](https://doi.org/10.1007/978-81-322-1777-0_6)
  93. Guo Y, Korteweg C, McNutt MA, Gu J (2008) Pathogenetic mechanisms of severe acute respiratory syndrome. *Virus Res* 133(1):4–12. <https://doi.org/10.1016/j.virusres.2007.01.022>
  94. Paniz-Mondolfi A, Bryce C, Grimes Z, Gordon RE, Reidy J, Lednický J, Sordillo EM, Fowkes M (2020) Central nervous system involvement by severe acute respiratory syndrome coronavirus-2 (SARS-CoV-2). *J Med Virol* 92(7):699–702. <https://doi.org/10.1002/jmv.25915>
  95. Xu J, Zhong S, Liu J, Li L, Li Y, Wu X, Li Z, Deng P et al (2005) Detection of severe acute respiratory syndrome coronavirus in the brain: Potential role of the chemokine mig in pathogenesis. *Clin Infect Dis* 41(8):1089–1096. <https://doi.org/10.1086/444461>
  96. Desforges M, Le Coupanec A, Stodola JK, Meessen-Pinard M, Talbot PJ (2014) Human coronaviruses: Viral and cellular factors involved in neuroinvasiveness and neuropathogenesis. *Virus Res* 194:145–158. <https://doi.org/10.1016/j.virusres.2014.09.011>
  97. Suen WW, Prow NA, Hall RA, Bielefeldt-Ohmann H (2014) Mechanism of West Nile virus neuroinvasion: a critical appraisal. *Viruses* 6(7):2796–2825. <https://doi.org/10.3390/v6072796>
  98. Xanthos DN, Sandkühler J (2014) Neurogenic neuroinflammation: inflammatory CNS reactions in response to neuronal activity. *Nat Rev Neurosci* 15(1):43–53. <https://doi.org/10.1038/nrn3617>
  99. Almutairi MM, Gong C, Xu YG, Chang Y, Shi H (2016) Factors controlling permeability of the blood-brain barrier. *Cell Mol Life Sci* 73(1):57–77. <https://doi.org/10.1007/s00018-015-2050-8>
  100. Erickson MA, Dohi K, Banks WA (2012) Neuroinflammation: a common pathway in CNS diseases as mediated at the blood-brain barrier. *Neuroimmunomodulation* 19(2):121–130. <https://doi.org/10.1159/000330247>
  101. Zhang H, Zhou P, Wei Y, Yue H, Wang Y, Hu M, Zhang S, Cao T et al (2020) Histopathologic changes and SARS-CoV-2 immunostaining in the lung of a patient with COVID-19. *Ann Intern Med* 172(9):629–632. <https://doi.org/10.7326/M20-0533>
  102. Engelhardt B, Ransohoff RM (2012) Capture, crawl, cross: the T cell code to breach the blood–brain barriers. *Trends Immunol* 33(12):579–589. <https://doi.org/10.1016/j.it.2012.07.004>
  103. Gorina R, Lyck R, Vestweber D, Engelhardt B (2014)  $\beta$ 2-integrin-mediated crawling on endothelial ICAM-1 and ICAM-2 is a prerequisite for transcellular neutrophil diapedesis across the inflamed blood–brain barrier. *J Immunol* 192(1):324–337. <https://doi.org/10.4049/jimmunol.1300858>
  104. Hermand P, Huet M, Callebaut I, Gane P, Ihanus E, Gahmberg CG, Cartron JP, Bailly P (2000) Binding sites of leukocyte beta 2 integrins (LFA-1, mac-1) on the human ICAM-4/LW blood group protein. *J Biol Chem* 275(34):26002–26010. <https://doi.org/10.1074/jbc.M002823200>
  105. Majerova P, Michalicova A, Cente M, Hanes J, Vegh J, Kittel A, Kosikova N, Cigankova V et al (2019) Trafficking of immune cells across the blood-brain barrier is modulated by neurofibrillary pathology in tauopathies. *PLoS One* 14(5):e0217216. <https://doi.org/10.1371/journal.pone.0217216>
  106. Randi AM, Hogg N (1994) I domain of beta 2 integrin lymphocyte function-associated antigen-1 contains a binding site for ligand intercellular adhesion molecule-1. *J Biol Chem* 269(17):12395–12398
  107. van Wetering S, van den Berk N, van Buul JD, Mul FP, Lommerse I, Mous R, ten Klooster JP, Zwaginga JJ et al (2003) VCAM-1-mediated Rac signaling controls endothelial cell-cell contacts and leukocyte transmigration. *Am J Phys Cell Phys* 285(2):C343–C352. <https://doi.org/10.1152/ajpcell.00048.2003>
  108. Park WB, Kwon NJ, Choi SJ, Kang CK, Choe PG, Kim JY, Yun J, Lee GW et al (2020) Virus isolation from the first patient with SARS-CoV-2 in Korea. *J Korean Med Sci* 35(7):e84. <https://doi.org/10.3346/jkms.2020.35.e84>
  109. Yilla M, Harcourt BH, Hickman CJ, McGrew M, Tamin A, Goldsmith CS, Bellini WJ, Anderson LJ (2005) SARS-coronavirus replication in human peripheral monocytes/macrophages. *Virus Res* 107(1):93–101. <https://doi.org/10.1016/j.virusres.2004.09.004>
  110. Azkur AK, Akdis M, Azkur D, Sokolowska M, van de Veen W, Brügggen M-C, O'Mahony L, Gao Y et al (2020) Immune response to SARS-CoV-2 and mechanisms of immunopathological changes in COVID-19. *Allergy* 75(7):1564–1581. <https://doi.org/10.1111/all.14364>
  111. Chang Y-S, Ko B-H, Ju J-C, Chang H-H, Huang S-H, Lin C-W (2020) SARS unique domain (SUD) of severe acute respiratory syndrome coronavirus induces NLRP3 Inflammasome-dependent CXCL10-mediated pulmonary inflammation. *Int J Mol Sci* 21(9):3179. <https://doi.org/10.3390/ijms21093179>
  112. Brenner SR Erythropoietin-induced hemoglobin subunit beta may stimulate innate immune RNA virus pattern recognition, suppress reactive oxygen species, reduce ACE2 viral doorway opening, and neutrophil extracellular traps against COVID-19. In: *Journal of Medical Virology*. <https://doi.org/10.1002/jmv.26284>
  113. Hur S (2019) Double-stranded RNA sensors and modulators in innate immunity. *Annu Rev Immunol* 37:349–375. <https://doi.org/10.1146/annurev-immunol-042718-041356>
  114. Hadjadj J, Yatim N, Barnabei L, Corneau A, Boussier J, Smith N, Péré H, Charbit B et al (2020) Impaired type I interferon activity and inflammatory responses in severe COVID-19 patients. *Science (New York, NY)* 369(6504):718–724. <https://doi.org/10.1126/science.abc6027>
  115. Kindler E, Thiel V (2016) SARS-CoV and IFN: too little, too late. *Cell Host Microbe* 19(2):139–141. <https://doi.org/10.1016/j.chom.2016.01.012>
  116. Wu C, Chen X, Cai Y, Ja X, Zhou X, Xu S, Huang H, Zhang L et al (2020) Risk factors associated with acute respiratory distress syndrome and death in patients with coronavirus disease 2019 pneumonia in Wuhan, China. *JAMA Intern Med* 180(7):1–11. <https://doi.org/10.1001/jamainternmed.2020.0994>
  117. Ye Q, Wang B, Mao J (2020) The pathogenesis and treatment of the 'cytokine storm' in COVID-19. *J Infect* 80(6):607–613. <https://doi.org/10.1016/j.jinf.2020.03.037>
  118. Xu Z, Shi L, Wang Y, Zhang J, Huang L, Zhang C, Liu S, Zhao P et al (2020) Pathological findings of COVID-19 associated with acute respiratory distress syndrome. *Lancet Respir Med* 8(4):420–422. [https://doi.org/10.1016/S2213-2600\(20\)30076-X](https://doi.org/10.1016/S2213-2600(20)30076-X)
  119. Qin C, Zhou L, Hu Z, Zhang S, Yang S, Tao Y, Xie C, Ma K et al (2020) Dysregulation of immune response in patients with coronavirus 2019 (COVID-19) in Wuhan, China. *Clin Infect Dis* 71(15):762–768. <https://doi.org/10.1093/cid/ciaa248>
  120. Wang L, Li X, Chen H, Yan S, Li Y, Li D, Gong Z (2020) SARS-CoV-2 infection does not significantly cause acute renal injury: an analysis of 116 hospitalized patients with COVID-19 in a single hospital, Wuhan, China. *medRxiv:2020.2002(2019):20025288*. <https://doi.org/10.1101/2020.02.19.20025288>

121. Connors JM, Levy JH (2020) COVID-19 and its implications for thrombosis and anticoagulation. *Blood* 135(23):2033–2040. <https://doi.org/10.1182/blood.2020060600>
122. Jackson SP, Darbousset R, Schoenwaelder SM (2019) Thromboinflammation: challenges of therapeutically targeting coagulation and other host defense mechanisms. *Blood* 133(9):906–918. <https://doi.org/10.1182/blood-2018-11-882993>
123. Varga Z, Flammer AJ, Steiger P, Haberecker M, Andermatt R, Zinkernagel AS, Mehra MR, Schuepbach RA et al (2020) Endothelial cell infection and endotheliitis in COVID-19. *Lancet* 395(10234):1417–1418. [https://doi.org/10.1016/S0140-6736\(20\)30937-5](https://doi.org/10.1016/S0140-6736(20)30937-5)
124. Tetro JA (2020) Is COVID-19 receiving ADE from other coronaviruses? *Microbes Infect* 22(2):72–73. <https://doi.org/10.1016/j.micinf.2020.02.006>
125. Zhu Z, Chakraborti S, He Y, Roberts A, Sheahan T, Xiao X, Hensley LE, Prabhakaran P et al (2007) Potent cross-reactive neutralization of SARS coronavirus isolates by human monoclonal antibodies. *Proc Natl Acad Sci* 104(29):12123–12128. <https://doi.org/10.1073/pnas.0701000104>
126. Nimmerjahn F, Ravetch JV (2008) Fcγ receptors as regulators of immune responses. *Nat Rev Immunol* 8(1):34–47. <https://doi.org/10.1038/nri2206>
127. Grifoni A, Weiskopf D, Ramirez SI, Mateus J, Dan JM, Moderbacher CR, Rawlings SA, Sutherland A et al (2020) Targets of T cell responses to SARS-CoV-2 coronavirus in humans with COVID-19 disease and unexposed individuals. *Cell* 181(7):1489–1501 e1415. <https://doi.org/10.1016/j.cell.2020.05.015>
128. Jansen JM, Gerlach T, Elbahesh H, Rimmelzwaan GF, Saletti G (2019) Influenza virus-specific CD4+ and CD8+ T cell-mediated immunity induced by infection and vaccination. *J Clin Virol* 119:44–52. <https://doi.org/10.1016/j.jcv.2019.08.009>
129. Braun J, Loyal L, Frentsch M, Wendisch D, Georg P, Kurth F, Hippenstiel S, Dingeldey M et al (2020) SARS-CoV-2-reactive T cells in healthy donors and patients with COVID-19. *Nature*. <https://doi.org/10.1038/s41586-020-2598-9>
130. Le Bert N, Tan AT, Kunasegaran K, Tham CYL, Hafezi M, Chia A, Chng MHY, Lin M et al (2020) SARS-CoV-2-specific T cell immunity in cases of COVID-19 and SARS, and uninfected controls. *Nature*. 584(7821):457–462. <https://doi.org/10.1038/s41586-020-2550-z>
131. Dörries R, Watanabe R, Wege H, ter Meulen V (1987) Analysis of the intrathecal humoral immune response in Brown Norway (BN) rats, infected with the murine coronavirus JHM. *J Neuroimmunol* 14(3):305–316. [https://doi.org/10.1016/0165-5728\(87\)90017-8](https://doi.org/10.1016/0165-5728(87)90017-8)
132. Yeh EA, Collins A, Cohen ME, Duffner PK, Faden H (2004) Detection of coronavirus in the central nervous system of a child with acute disseminated encephalomyelitis. *Pediatrics* 113(1 Pt 1):e73–e76. <https://doi.org/10.1542/peds.113.1.e73>
133. Asadi-Pooya AA, Yaghoubi E, Nikseresh A, Moghadami M, Honarvar B (2011) The neurological manifestations of H1N1 influenza infection; diagnostic challenges and recommendations. *Iran J Med Sci* 36(1):36–39
134. Yildizdağ D, Kendirli T, Arslanköylü AE, Horoz OO, Incecik F, Ince E, Ciftçi E (2011) Neurological complications of pandemic influenza (H1N1) in children. *Eur J Pediatr* 170(6):779–788. <https://doi.org/10.1007/s00431-010-1352-y>
135. Gust J, Hay KA, Hanafi LA, Li D, Myerson D, Gonzalez-Cuyar LF, Yeung C, Liles WC et al (2017) Endothelial activation and blood-brain barrier disruption in neurotoxicity after adoptive immunotherapy with CD19 CAR-T cells. *Cancer Discov* 7(12):1404–1419. <https://doi.org/10.1158/2159-8290.cd-17-0698>
136. Ng Kee Kwong KC, Mehta PR, Shukla G, Mehta AR (2020) COVID-19, SARS and MERS: A neurological perspective. *J Clin Neurosci* 77:13–16. <https://doi.org/10.1016/j.jocn.2020.04.124>
137. Fouda AY, Fagan SC, Ergul A (2019) Brain vasculature and cognition. *Arterioscler Thromb Vasc Biol* 39(4):593–602. <https://doi.org/10.1161/ATVBAHA.118.311906>
138. Carter CJ (2017) Genetic, transcriptome, proteomic, and epidemiological evidence for blood-brain barrier disruption and Polymicrobial brain invasion as determinant factors in Alzheimer's disease. *J Alzheimers Dis Rep* 1(1):125–157. <https://doi.org/10.3233/ADR-170017>
139. Bell RD, Zlokovic BV (2009) Neurovascular mechanisms and blood-brain barrier disorder in Alzheimer's disease. *Acta Neuropathol* 118(1):103–113. <https://doi.org/10.1007/s00401-009-0522-3>
140. Ueno M, Chiba Y, Matsumoto K, Murakami R, Fujihara R, Kawauchi M, Miyanaka H, Nakagawa T (2016) Blood-brain barrier damage in vascular dementia. *Neuropathology* 36(2):115–124. <https://doi.org/10.1111/neup.12262>
141. Kurtzke JF (1993) Epidemiologic evidence for multiple sclerosis as an infection. *Clin Microbiol Rev* 6(4):382–427. <https://doi.org/10.1128/cmr.6.4.382>
142. Varatharaj A, Galea I (2017) The blood-brain barrier in systemic inflammation. *Brain Behav Immun* 60:1–12. <https://doi.org/10.1016/j.bbi.2016.03.010>
143. Holmes C, Cunningham C, Zotova E, Woolford J, Dean C, Kerr S, Culliford D, Perry VH (2009) Systemic inflammation and disease progression in Alzheimer disease. *Neurology* 73(10):768–774. <https://doi.org/10.1212/WNL.0b013e3181b6bb95>
144. Barnes LL, Capuano AW, Aiello AE, Turner AD, Yolken RH, Torrey EF, Bennett DA (2015) Cytomegalovirus infection and risk of Alzheimer disease in older black and white individuals. *J Infect Dis* 211(2):230–237. <https://doi.org/10.1093/infdis/jiu437>
145. Jaeger LB, Dohgu S, Sultana R, Lynch JL, Owen JB, Erickson MA, Shah GN, Price TO et al (2009) Lipopolysaccharide alters the blood-brain barrier transport of amyloid beta protein: a mechanism for inflammation in the progression of Alzheimer's disease. *Brain Behav Immun* 23(4):507–517. <https://doi.org/10.1016/j.bbi.2009.01.017>
146. Weintraub MK, Kranjac D, Eimerbrink MJ, Pearson SJ, Vinson BT, Patel J, Summers WM, Parnell TB et al (2014) Peripheral administration of poly I:C leads to increased hippocampal amyloid-beta and cognitive deficits in a non-transgenic mouse. *Behav Brain Res* 266:183–187. <https://doi.org/10.1016/j.bbr.2014.03.009>
147. Bourgade K, Le Page A, Bocti C, Witkowski JM, Dupuis G, Frost EH, Fülöp T (2016) Protective effect of amyloid-β peptides against herpes simplex Virus-1 infection in a neuronal cell culture model. *J Alzheimers Dis* 50(4):1227–1241. <https://doi.org/10.3233/jad-150652>
148. Brown EE, Kumar S, Rajji TK, Pollock BG, Mulsant BH (2020) Anticipating and mitigating the impact of the COVID-19 pandemic on Alzheimer's disease and related dementias. *Am J Geriatr Psychiatry* 28(7):712–721. <https://doi.org/10.1016/j.jagp.2020.04.010>
149. Mackall CL, Gress RE (1997) Thymic aging and T-cell regeneration. *Immunol Rev* 160:91–102. <https://doi.org/10.1111/j.1600-065x.1997.tb01030.x>
150. McManus RM, Heneka MT (2017) Role of neuroinflammation in neurodegeneration: New insights. *Alzheimers Res Ther* 9(1):14. <https://doi.org/10.1186/s13195-017-0241-2>
151. Naylor K, Li G, Vallejo AN, Lee WW, Koetz K, Bryl E, Witkowski J, Fulbright J et al (2005) The influence of age on T cell generation and TCR diversity. *J Immunol* 174(11):7446–7452. <https://doi.org/10.4049/jimmunol.174.11.7446>

152. Raffel J, Wakerley B, Nicholas R (2016) Multiple sclerosis. *Medicine* 44(9):537–541. <https://doi.org/10.1016/j.mpmed.2016.06.005>
153. Cusick MF, Libbey JE, Fujinami RS (2013) Multiple sclerosis: autoimmunity and viruses. *Curr Opin Rheumatol* 25(4):496–501. <https://doi.org/10.1097/bor.0b013e328362004d>
154. Owens GP, Gilden D, Burgoon MP, Yu X, Bennett JL (2011) Viruses and multiple sclerosis. *Neuroscientist* 17(6):659–676. <https://doi.org/10.1177/1073858411386615>
155. Li CK-F, Wu H, Yan H, Ma S, Wang L, Zhang M, Tang X, Temperton NJ et al (2008) T cell responses to whole SARS coronavirus in humans. *J Immunol* 181(8):5490–5500. <https://doi.org/10.4049/jimmunol.181.8.5490>
156. Sonar SA, Shaikh S, Joshi N, Atre AN, Lal G (2017) IFN- $\gamma$  promotes transendothelial migration of CD4<sup>+</sup> T cells across the blood–brain barrier. *Immunol Cell Biol* 95(9):843–853. <https://doi.org/10.1038/icb.2017.56>
157. Fabis MJ, Scott GS, Kean RB, Koprowski H, Hooper DC (2007) Loss of blood–brain barrier integrity in the spinal cord is common to experimental allergic encephalomyelitis in knockout mouse models. *Proc Natl Acad Sci* 104(13):5656–5661. <https://doi.org/10.1073/pnas.0701252104>
158. Cramer SP, Larsson HB (2014) Accurate determination of blood–brain barrier permeability using dynamic contrast-enhanced T1-weighted MRI: a simulation and in vivo study on healthy subjects and multiple sclerosis patients. *J Cereb Blood Flow Metab* 34(10):1655–1665. <https://doi.org/10.1038/jcbfm.2014.126>
159. Alvarez JI, Saint-Laurent O, Godschalk A, Terouz S, Briels C, Larouche S, Bourbonnière L, Larochelle C et al (2015) Focal disturbances in the blood–brain barrier are associated with formation of neuroinflammatory lesions. *Neurobiol Dis* 74:14–24. <https://doi.org/10.1016/j.nbd.2014.09.016>

#### Related links

International Committee on Taxonomy of Viruses (<https://talk.ictvonline.org/>)

World Health Organization, WHO Coronavirus Disease (COVID-19) (<https://covid19.who.int/>)

**Publisher's Note** Springer Nature remains neutral with regard to jurisdictional claims in published maps and institutional affiliations.