



Seismic noise variability as an indicator of urban mobility during the COVID-19 pandemic in the Santiago metropolitan region, Chile

Javier Ojeda and Sergio Ruiz

Departamento de Geofísica, Universidad de Chile, Santiago, Chile

Correspondence: Javier Ojeda (jojeda@dgf.uchile.cl)

Received: 27 November 2020 – Discussion started: 11 December 2020

Revised: 30 March 2021 – Accepted: 7 April 2021 – Published: 17 May 2021

Abstract. On 3 March 2020, the first case of COVID-19 was confirmed in Chile. Since then, the Ministry of Health has imposed mobility restrictions, a global policy implemented to mitigate the propagation of the virus. The national seismic network operating throughout Chile provides an opportunity to monitor the ambient seismic noise (ASN) and determine the effectiveness of public policies imposed to reduce urban mobility in the major cities. Herein, we analyse temporal variations in high-frequency ASN recorded by broadband and strong-motion instruments deployed throughout the main cities of Chile. We focus on the capital, Santiago, a city with more than 7 million inhabitants because it is seismically well instrumented and has high levels of urban mobility due to worker commutes inside the region. We observed strong similarities between anthropogenic seismic noise and human mobility indicators, as shown in the difference between urban and rural amplitudes, long-term variations, and variability due to the COVID-19 outbreak. The same results are observed in other cities such as Iquique, La Serena, and Concepción. Our findings suggest that the initially implemented public health policies and the early end to confinement in mid-April 2020 in the metropolitan region caused an increase in mobility and virus transmission, where the peak in anthropogenic seismic noise coincides with the peak of the effective reproductive number from confirmed positive cases of COVID-19. These results confirm that seismic networks are capable of recording the urban mobility of population within cities, and we show that continuous monitoring of ASN can quantify urban mobility. Finally, we suggest that real-time changes in ASN amplitudes should be considered part of public health policy in further protocols in Santiago and other high-density cities of the world, as has been useful during the recent pandemic.

1 Introduction

Since the propagation of the severe acute respiratory syndrome coronavirus 2 (SARS-CoV-2), which causes the coronavirus disease 2019 (COVID-19), countries have used various strategies to reduce the risk of the virus spreading (Walker et al., 2020). In Chile, the first case of COVID-19 was confirmed on 3 March 2020, and from there the disease spread rapidly until the number of cases reached a peak on 14 June (Canals et al., 2020). During this first period, the main public health policy addressed isolation and social distancing, including the closure of schools, universities, and other educational centres (16 March); a national night-time curfew (23 March); and the lockdown of communes. From 19 July 2020, the Chilean government implemented the step-by-step programme, which considered a gradual open of each commune in five phases, based on the monitoring of epidemiological and health system indicators (see Table S1; Tariq et al., 2021). One of the most affected zones corresponds to the metropolitan region (hereafter MR) of Chile, which includes the capital, Santiago, a big city containing 40 % of the Chilean population. According to the 2017 Census (INE, 2017), the population of the MR reached 7 112 808 inhabitants, with a density of 461.77 inhabitants per square kilometre, and Santiago had the highest population density of Chile (Fig. 1; see Fig. S1a).

Ambient seismic noise (ASN) can be attributed to various sources depending on the frequency band analysed. At higher frequencies, above 1 Hz, ASN exhibits daily, weekly, and holiday variations linked to human activities (e.g., Bonnefoy-Claudet et al., 2006; Groos and Ritter, 2009; Díaz et al., 2017). This high-frequency band, also called anthropogenic or cultural noise, registered on seismic data is quickly attenuated with distance on the order of a few kilometres (Groos

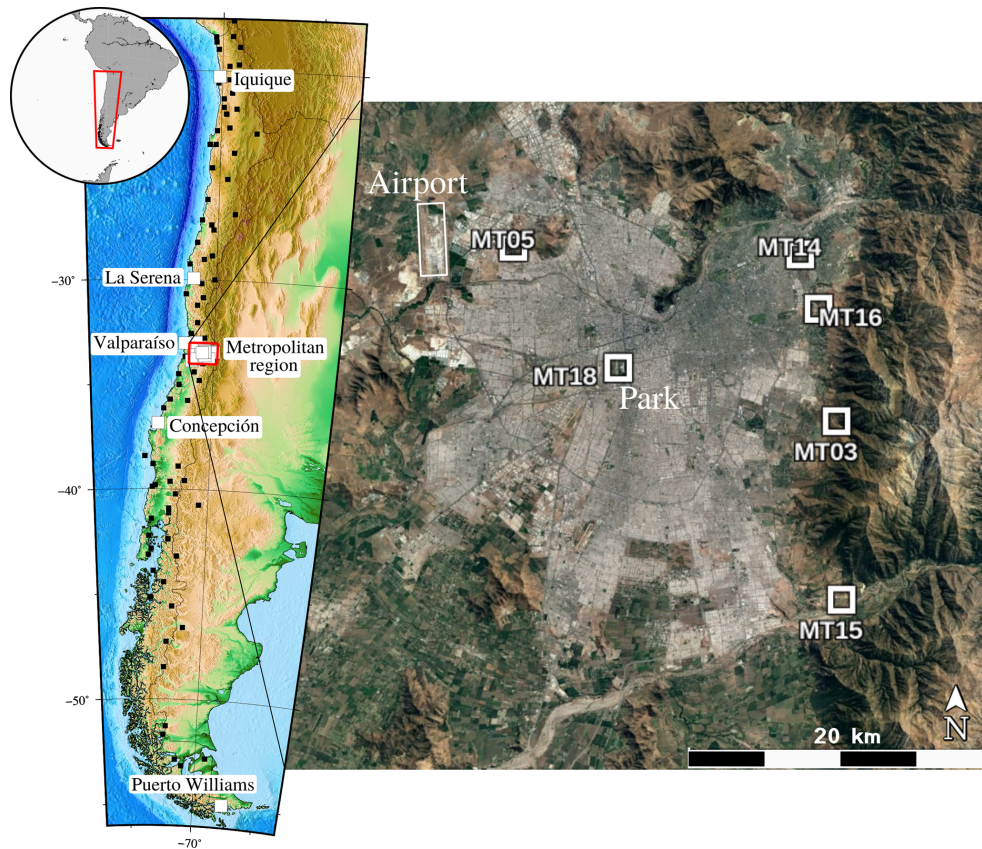


Figure 1. Location of the seismic stations of Chilean seismological network. Inset map shows the study location with reference to South America. The small black square corresponds to the broadband stations managed by CSN. White squares correspond to the five stations analysed in Iquique, La Serena, Valparaíso, Concepción, and Puerto Williams. The red rectangle shows the MR with six stations located in urban areas (squares with white contours). We have also shown the location of the airport and O'Higgins Park. Photos from © Google Earth.

and Ritter, 2009; Boese et al., 2015; Green et al., 2017). The effects of the COVID-19 outbreak and global mobility restrictions have created an opportunity to analyse the reduction and temporal variations in high-frequency ASN on seismological networks (e.g., Lecocq et al., 2020a), GNSS Observations (Karegar and Kusche, 2020), and fibre-optic distributed acoustic sensing (Lindsey et al., 2020). Previous works in other countries compare the temporal variability between ASN and other observables such as mobility data from cell phone displacements in northern Italy (Poli et al., 2020), Río de Janeiro, Brazil (Dias et al., 2020), Sicily, Italy (Cannata et al., 2021), Auckland, New Zealand (van Wijk et al., 2021), Barcelona, Spain (Diaz et al., 2021), and Querétaro, México (De Plaen et al., 2021). In addition, Xiao et al. (2020) reported cultural noise changes in China, and Guenaga et al. (2021) distinguished significant ASN reductions in academic institutions across the United States. These observations reveal the effect of mobility restrictions imprinted on geophysical measurements worldwide, where the pandemic caused one of the quietest recorded periods on Earth with a 50 % reduction in seismic noise (Denolle and Nissen-Meyer, 2020; Lecocq et al., 2020a). However, a deep analysis of tempo-

ral variations in ASN in each city and country could reveal ways to significantly advance the robust monitoring of urban mobility, especially during a pandemic.

Herein, we analyse the effect of temporal variations on ASN using the continuous recording data of the Chilean seismic network operated by the National Seismological Centre (hereafter, CSN, Centro Sismológico Nacional; Barrientos, 2018). Our results show the difference between urban and rural ASN amplitudes and the long-term temporal variations and reduction during holiday seasons, as well as those due to the spreading of COVID-19 and mobility restrictions. Additionally, we studied the temporal variations due to the implementation of different public health policies in Chile. We identified an agreement between high-frequency ASN amplitudes and other mobility data within the MR, as well as an increase in epidemiological parameters of virus transmission on the dates of a peak in ASN. Our findings suggest that ASN analysis could be used to infer the dynamics of the population influenced by large and long-scale events in big cities, like a pandemic.

2 Data and methods

2.1 Seismic data

Since 2013 the CSN has deployed a large number of seismic stations throughout Chile, most of them in areas outside the main cities where there is a low signal-to-noise ratio to better record the regular seismicity (Barrientos, 2018). The CSN network is formed by ~ 120 broadband and accelerometer multi-parametric stations deployed at the same location, ~ 300 accelerographs with trigger systems, and a few continuous-recording strong-motion instruments. Further information about the geophysical characterization and soil conditions where stations were deployed can be found in Leyton et al. (2018a) and Leyton et al. (2018b). Herein, we focus on stations located inside or close to the principal cities. We analysed the data of 15 stations placed in the MR (see Fig. S1) and five stations deployed in other cities within Chile, i.e. Iquique, La Serena, Valparaíso, Concepción, and Puerto Williams (Fig. 1; see Table S2). These stations were selected because of their distance from the main cities, high-quality data, and short-time data gaps. We only analysed the vertical component of the data due to the similarities in the results observed using horizontal components (Lecocq et al., 2020a). Most of the records correspond to broadband stations, except for the strong motion C.CCSP station placed in San Pedro (Concepción) and the strong motion C1.MT18 station located in downtown Santiago (for the MT18 station, we analysed both broadband and strong-motion records). For all stations, we processed 11 months of data from 1 December 2019 to 1 October 2020 and extended this to 3 years of data from 1 October 2017 to 1 October 2020 for stations MT09 and MT14 located in the MR.

2.2 Seismic noise analyses

To investigate the temporal changes in the seismic signal, we followed the methodology used by Lecocq et al. (2020a) considering continuous data. We computed a daily power spectral density in 30 min windows, where each windowed time series was calculated using Welch's method (Welch, 1967); therefore, the windowed segments were converted to periodograms. We estimated the displacement spectral power, from which we calculate the root mean square (rms) of the time-domain displacement using a bandpass filter. To better understand the effects of the chosen corner frequency applied in the bandpass filter, we tested the temporal changes in the normalized seismic rms amplitude at the MT18 station (Fig. 2). In the first order, the temporal changes are similar between the different corner frequencies applied, excluding the lower frequency bands such as 0.1–1, 1–3, and 3–5 Hz. At frequencies > 1 Hz we can avoid records of microseism and observe important temporal changes in the normalized displacement. Consequently, we decided to filter the data be-

tween 4 and 14 Hz to obtain the rms of the time-domain displacement or high-frequency ASN (Lecocq et al., 2020a).

We calculated the RMS displacement variability for broadband and strong-motion records. Figure 3 shows the temporal changes in ASN amplitudes that are comparable between both instruments at station MT18. The median daytime amplitudes between 05:00 and 22:00 LT (local time) obtained from the seismometer and the accelerometer exhibit similar trends and behaviour. To analyse the seismic effects of the lockdowns in Santiago City, we calculated 24 h clock plots for station MT18 through which we observed the average displacement variation for weekdays and weekends for the period before Lockdown 1 (Fig. 4a) and after Lockdown 1 (Fig. 4b). In addition, the displacement noise evolution is shown in an hourly grid representation from January 2020 to August 2020 (Fig. 4c).

2.3 Other observables: epidemiological and mobility data

Our study integrates epidemiological data available on the website of the Chilean Ministry of Science. One of the primary indicators of the spreading of viruses and contagion dynamics is the estimation of the effective reproductive number (hereafter R_e) from confirmed positive cases of COVID-19 since the date of the beginning of symptoms. The R_e indicator is defined as the actual average number of secondary cases generated by a primary case during the epidemic outbreak (Caicedo-Ochoa et al., 2020; Tariq et al., 2021). Its estimation is helpful for the assessment of public policies, to estimate population immunity, and to monitor near real-time changes in transmission of the viruses over time, among other benefits (Gostic et al., 2020). To control an epidemic outbreak, the R_e indicator needs to be reduced below 1 (Riley et al., 2003). Herein, we used the estimation provided by ICOVID Chile (2020), who described the function R_e depending on the proportion of susceptible individuals to be infected, a transmission coefficient and the infectious life expectancy. In other words, the R_e accounts for the coefficient between the new infections and the recovery rates plus mortality rates (Contreras et al., 2020). ICOVID Chile (2020) used the method proposed by Cori et al. (2013) to monitor R_e in real time, modelling the transmission like a Poisson process calculated on the basis of the last 7 d. We considered only the R_e median and 95 % credible interval estimated for the urban area in the MR, according to the data given by the Health Service of Santiago City.

The mobility data we analysed is provided by Apple mobile phone locations in Santiago City, which corresponds to the percentage of change in the public's walking and driving in relation to a baseline value from 13 January (Apple, 2020). Moreover, we used the public transport transactions provided by the Chilean Ministry of Transport and the Instituto de Sistemas Complejos de Ingeniería (Ministry of Science, 2020). They account for the total number of validations

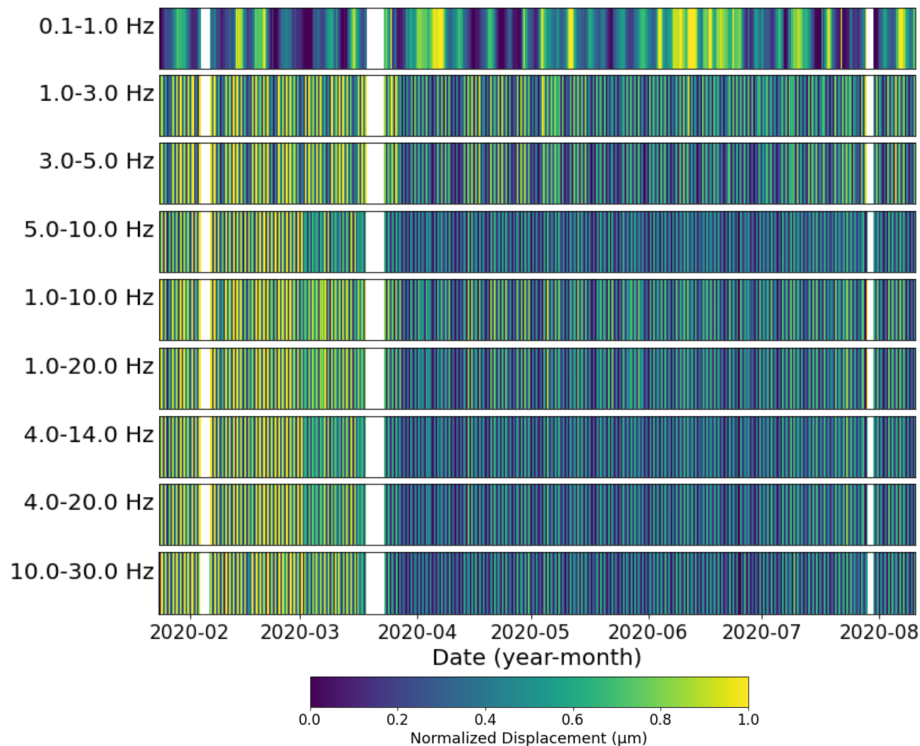


Figure 2. Normalized RMS amplitude at the vertical component of station MT18 in downtown Santiago. We tested nine bandpass filters between 0.1 to 30 Hz (see y axis). White space corresponds to data gaps.

using the public transportation card in the MR. This mobility card is the only system to make transactions in public transport in the area. Finally, we utilized local flight data provided by the Civil Aeronautical Board of Chile, which correspond to the total number of passengers that departed from Santiago City or arrived there on national flights (Ministry of Science, 2020) at the Airport “Arturo Merino Benítez” located approximately 5 km west of station MT05 (see Fig. S1c).

3 Results

3.1 Lockdown, curfew, and ASN amplitudes

We analysed the seismic effect caused by the first lockdown in Santiago City using the 24 h clock plots in station MT18 (Fig. 4a, b). Although we observed a gradual reduction in ASN amplitudes on weekdays due to the day cares, schools, and universities near the station closed (16 March), we also notice a strong reduction on weekends, especially between 11:00 and 19:00 LT. Figure S1b shows the area close to MT18 in which we can distinguish the hippodrome “Club Hípico de Santiago” and the O’Higgins Park. The highest ASN amplitudes observed on Saturday before Lockdown 1 (Fig. 4a) are explained by the activities of the hippodrome on Saturdays (and some Thursdays during January–February). The hippodrome closed on 21 March 2021, which is in agree-

ment with the decrease in the ASN amplitudes observed after Lockdown 1 (Fig. 4b).

We also distinguish the lockdown effect in the hourly grid representation (Fig. 4c). The large ASN amplitudes observed during holidays are associated with nearby activities in both the hippodrome and O’Higgins Park, which only persist on weekends during March. After the implementation of Lockdown 1, the ASN amplitudes drop, especially on weekends. Moreover, we observed a systematic behaviour of lower ASN amplitudes between 22:00 and 05:00 LT due to the overnight curfew implemented at the same hours that were imposed during Lockdown 1 and remained during the full studied time window.

3.2 ASN variability between urban and rural areas in the metropolitan region

Figure 5 shows the ASN variability over 3 years for two representative stations in the MR, MT14 in Las Condes and MT09 located in an almost unpopulated area near the town of Talagante. High-frequency ASN exhibits higher amplitude in urban stations than rural environments. MT14 presents larger temporal changes, for example during the summer holiday season (January–February). The same trends are observed in the three analysed years 2018, 2019, and 2020, and the lockdown restrictions are visible with clear changes in the mean of ASN. In contrast, the MT09 station located in a rural en-

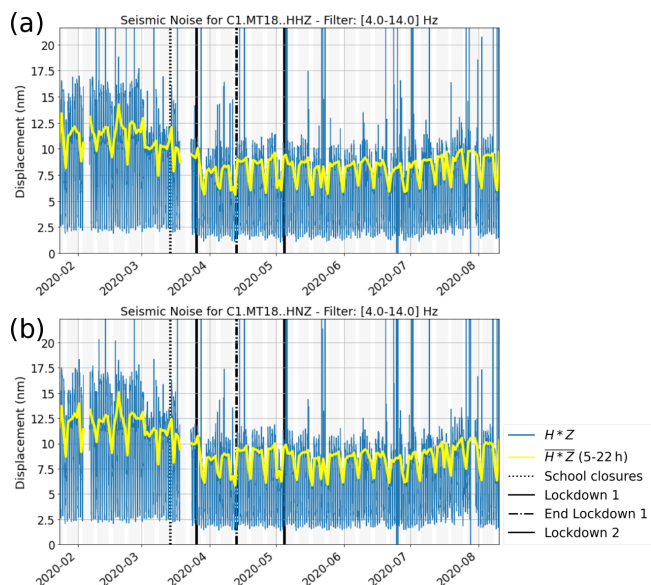


Figure 3. Comparison between (a) broadband and (b) strong-motion seismic noise amplitudes for station MT18 in downtown Santiago. The blue line corresponds to the rms amplitude time series of the vertical component, filtered between 4–14 Hz, and the yellow line corresponds to median daytime amplitude between 05:00–22:00 LT. Gaps correspond to periods for which seismic data are unavailable. The vertical black lines indicate the time of public restrictions implemented in Santiago. The grey and white background corresponds to weekdays and weekends, respectively. The key legend H^*Z can be applied for broadband (HHZ) and strong-motion (HNZ) seismic data.

vironment presents lower ASN amplitudes with few and low peaks due to local activity in the area.

Figure 6 shows the ASN variability in the six stations inside the urban ratio in the MR. In 10 months of data, we can see the temporal changes in high-frequency ASN. MR had different lockdown protocols depending on each municipality (see Table S2); however, most of the changes started on 16 March 2020, where schools, universities, and institutes decided to shut down and stopped their activities to mitigate the spread of COVID-19. The first lockdown was in downtown Santiago (MT18, Fig. 6b) and Las Condes (MT14, MT16, Fig. 6c, d) on 26 March 2020, 23 d after the first case of positive COVID-19, and was lifted on 13 April (downtown Santiago, MT18) and 16 April (Las Condes, MT14, MT16). After that, ASN amplitudes increased until the second lockdown on 5 May (downtown Santiago, MT18) and 15 May (Las Condes, MT14, MT16), where ASN amplitude immediately decreased. These temporal restrictions were well recorded by seismic stations installed in urban areas and are useful for analysing urban mobility. Other sectors from MR such as Renca (MT05, Fig. 6a), Peñalolén (MT03, Fig. 6e), and Puente Alto (MT15, Fig. 6f) also show strong variations in ASN because of lockdown restrictions. Concerning the ASN amplitude variability, we observed that the quieter stations in

the urban area of MR correspond to MT05, MT14, MT16, and MT03, stations that are located over hills, unlike the MT18 and MT15 stations, which are deployed in the valley. Despite the ASN present an average amplitude difference between each station, the temporal variations can be observed within Santiago City. In contrast, the high-frequency ASN estimated for rural stations show lower amplitudes without conspicuous evidence of temporal variations due to mobility restrictions (see Fig. S2); as we mentioned previously, located peaks are related to local activity in those areas and do not seem to follow a behaviour related to the anthropogenic ASN. Notice that the rural stations analysed are deployed within the MR at a distance of about 15 to 60 km from the stations installed in urban areas (see Fig. S1).

3.3 Mobility restrictions and epidemiological parameters linked with seismic noise amplitudes

We analysed the temporal variability of high-frequency ASN for station MT14, located in Las Condes municipality within Santiago, because this station lacked data gaps during 2020 and the area implemented a diversity of public policies for mitigating the effects of the pandemic. Figure 7 shows a matching pattern between the temporal changes in ASN amplitudes and the effective reproductive number (Re), especially from March to July, where we observed a peak in the number of positive COVID-19 cases (Canals et al., 2020). The peak for the Re indicator occurred after the end of Lockdown 1 and before Lockdown 2, a period in which the ASN amplitudes also increased due to the early end to confinement promoted by a “safe return” to normal activities (Tariq et al., 2021). This observation is supported by mobility data such as Apple’s driving and walking data (see Fig. S4), the gradual increase in public transport transactions, and a gradual increase in the flight arrivals and departures from Santiago city (see Fig. S5).

After Lockdown 2 in mid-July, the Chilean government proposed the step-by-step programme to mitigate the propagation of SARS-CoV-2 virus towards a gradual re-opening and increased mobility in different counties as a public health policy (see Table S1). The programme considers five phases, where the citizens progressively increase their mobility, and the advance or retreat of these phases is related to the epidemiological situation of each municipality. Las Condes (MT14) was the first territory in the MR in which the programme changed from Phase 1 to Phases 2 and 3. These mobility conditions explain the sharp increase in high-frequency ASN amplitudes after 28 July (Phase 2) and 2 September (Phase 3) (Fig. 7). These periods also correlate with the strong increase in the Apple mobility data. The Re indicator presents a gradual increase in this period and seems to oscillate around 1, similar to the time window between May and June.

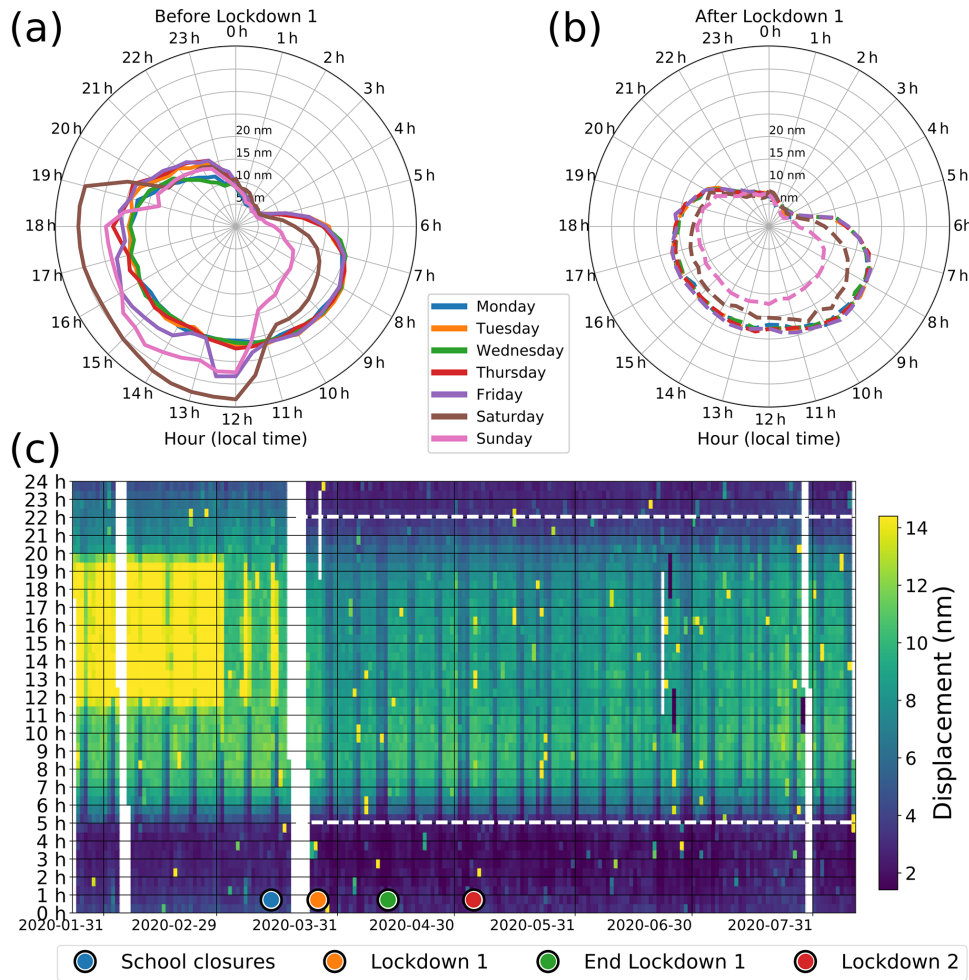


Figure 4. Analysis of station MT18 in downtown Santiago. (a, b) Clock plots showing an average of the displacement variability for each day of the week for the period (a) before Lockdown 1 (period 23 January–25 March 2020) and (b) after Lockdown 1 (period 26 March–10 August 2020) at station MT18 in downtown Santiago. (c) Displacement noise evolution is shown in an hourly grid representation. Gaps correspond to periods for which seismic data are unavailable. Blue, orange, green, and red circles below represent the time of public restrictions implemented in downtown Santiago. Horizontal dashed white lines show the curfew period imposed between 22:00–05:00 LT.

3.4 Situation in other places in Chile

High-frequency ASN changes were also recorded in other cities in Chile (Fig. 1). The variability in ASN amplitudes was observed in other populated cities of northern Chile, such as Iquique (TA02; see Fig. S3a) and La Serena (CO05; see Fig. S3b). In Iquique, the high-frequency ASN decreased after school closures until the end of April 2020, after which ASN increased to average levels. With the increase in the number of positive COVID-19 cases, the government implemented the first lockdown in this city on 15 May, dates in which we observed an instantaneous drop in ASN amplitude, which gradually recovered up to normal seismic noise levels at the end of September. In La Serena, the trends were similar, with a local ASN decrease on 16 March that ceased at the end of April. However, data gaps at station CO05 in La Serena do not allow further analysis. The Valparaíso sta-

tion, along the coast of Central Chile (VA01; see Fig. S3c), showed high variation due to the influence of the ocean (Ces-saro, 1994; Arduin et al., 2011), and it is difficult to high-light the change in ASN associated with anthropogenic noise. In central southern Chile in San Pedro, Concepción (CCSP; see Fig. S3d), we observed a strong reduction in ASN after school closures and the implementation of the first lockdown. The ASN amplitudes in Concepción are at least 30 nm noisier than Santiago (MT18), which could be explained by their location on residential areas but also the different soil conditions where the stations were installed. Finally, in Puerto Williams (MG01; see Fig. S3e), a small town at the south-ern tip of South America, temporal changes in ASN were also recorded, and this reduction coincided with the lock-down period and restriction of mobility and human activi-ties. Nevertheless, this station shows a strange pattern before the lockdown. The first one corresponds to a high drop in

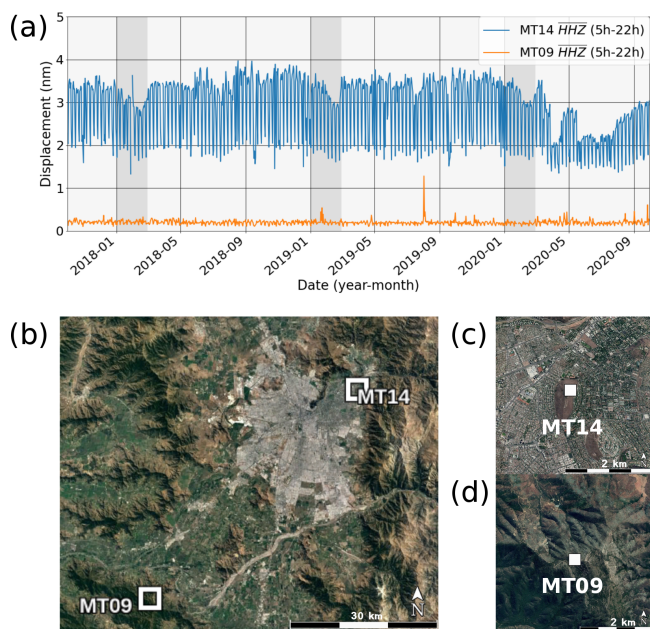


Figure 5. Displacement noise evolution at urban and rural stations in the metropolitan region for the period 1 October 2017–1 October 2020. **(a)** Long-term noise evolution in station MT14 (blue line) and MT09 (orange line). The grey background correspond to summer vacations. **(b)** Map with the relative position of each station in the metropolitan region and the near 2 km distance from stations **(c)** MT14 and **(d)** MT09. Photos from © Google Earth.

mid-December until the first days of January associated with holiday festivities (Christmas and New Year Day). The second pattern observed is the temporal variability that could be associated with the activity of the airfield near the site where the station is operating. Unfortunately, we do not have access to the aeroplane activity in those weeks to support our assumption.

4 Discussion

During 2020, the MR exhibited temporal changes in the amplitude of high-frequency ASN at all the stations near urban areas. However, we also identified temporal changes in the long-term variability of ASN, especially for stations deployed in urban areas rather than rural areas. Urban areas show larger RMS displacement amplitudes than rural areas located far from cities. We suggest that the variability in ASN amplitudes is a consequence of anthropogenic activities that affect higher frequencies (Díaz et al., 2017).

Since the implementation of lockdown measures in the MR, we observed a strong reduction in the amplitude of ASN similar to that observed by other authors in China, Italy, Brazil, and worldwide (e.g., Dias et al., 2020; Lecocq et al., 2020a; Poli et al., 2020; Xiao et al., 2020). Due to the frequency band applied to obtain the RMS displacement, this

ASN reduction indicates an intrinsic anthropogenic origin due to the variations in population mobility within cities. We described the temporal patterns and variations between weekdays and weekends, especially in station MT18 in the downtown Santiago, located near an amusement park with high levels of activity during the weekends observed in the seismic data before Lockdown 1 (Figs. 3 and 4). After Lockdown 1, the activity on weekends abruptly decreased, whereas the activity during weekdays had a gradual reduction. As a public health policy, from 23 March the government imposed an overnight curfew from 22:00 to 05:00 LT. The impact of this measure was recorded by most of the stations in urban areas, in which the ASN amplitudes decreased abruptly during the study period.

Temporal variations in ASN amplitudes coincide with the dates of changes in public health policies; variations due to lockdown and different phases of the end to confinement are observed in the high-frequency ASN amplitudes. One of the most interesting examples in the MR corresponds to station MT14 in Las Condes (Fig. 6c). Here, we observed a remarkable increase in ASN amplitudes between 16 April and 15 May, a period in which the government ended the first lockdown and started deconfinement in the eastern MR, raising the individual displacement of the population and urban mobility. Furthermore, during this period we observed a higher R_e value, an epidemiological indicator that represents the velocity of propagation of viruses and increases with the transmission and overload of health systems (Caicedo-Ochoa et al., 2020). The mobility data gathered from Apple devices, public transport transactions, and flights (see Figs. S4, S5) confirm the increase of urban mobility in the period analysed. In addition, Cuadrado et al. (2020) suggest that small-area lockdowns and reductions in mobility can reduce the transmission of the virus but that their impact was smaller than the early closures of schools, universities, and other educational centres. These observations indicate that ASN can act as an indicator of urban mobility and can be applied to monitor the dynamics of the populations within cities. The R_e parameter increased during the periods of higher human activity (“safe return” from LD1), and therefore ASN amplitudes increased in a period without strict management of the pandemic. The early removal of lockdown protocols to reopen the economy resulted in a new wave of infections and an exponential increase in the number of positive COVID-19 cases (Tariq et al., 2021), with a peak on 14 June and 95 % intensive care unit bed occupation (Canals et al., 2020).

The implementation of new health public policies like the step-by-step programme and their five phases since mid-July was accompanied by a gradual decrease in the R_e parameter, which oscillated around 1 since those dates. Although the ASN amplitudes increased after Phase 2 and Phase 3 in eastern MR, the R_e parameter was not linked, likely indicating better management of the epidemic outbreak with the broad-scale social distancing interventions applied in MR (Tariq et al., 2021). However, according to Canals et al. (2020), a

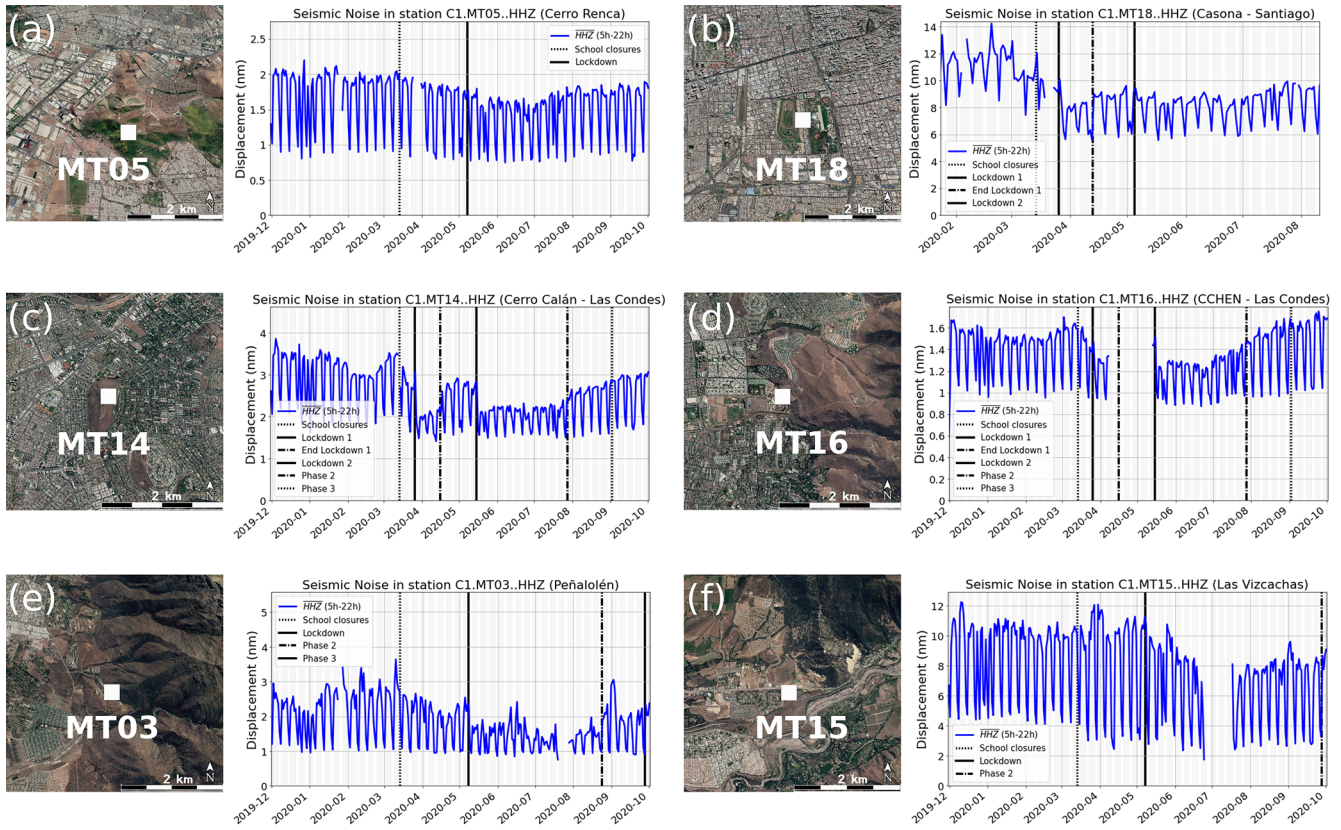


Figure 6. Changes in high-frequency seismic ambient noise amplitudes at stations (a) MT05, (b) MT18, (c) MT14, (d) MT16, (e) MT03, and (f) MT15. The vertical black lines indicate the time of public restrictions implemented in the metropolitan region. Each municipality inside the region had different lockdown periods or phases, despite the proximity between them. Photos from © Google Earth.

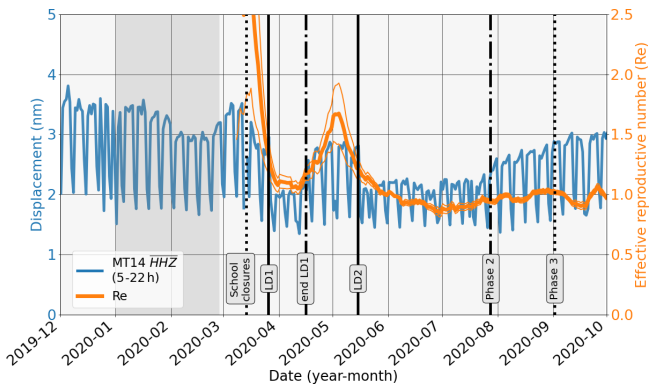


Figure 7. Comparison between noise evolution of station MT14 (blue line) and the epidemiological factor of the effective reproductive number (Re) over time is shown (orange line) with 95% confidence intervals (thin orange lines). The vertical black lines indicate the time of public restrictions implemented in Las Condes. The grey background between January and March corresponds to the summer holiday season in Chile.

relaxing of these interventions could raise the infections and saturate the health systems.

The matching pattern between the mobility data, the Re indicator, and the high-frequency ASN amplitudes is well established for the station MT14 located in Las Condes. Nonetheless, this did not occur with other stations in urban areas such as MT18 placed in downtown Santiago. This observation can be further explained due to the heterogeneity in policy effectiveness against the COVID-19 spread in MR. Bennett (2021) showed that social distancing, quarantines, and testing availability are affected by geographical and socio-economic factors, in which the lockdowns have been more effective in high-income zones (such as Las Condes) over lower-income zones (such as the others station analysed in the MR urban area). Furthermore, the people living in high-income zones can reduce their mobility by around 60%, while people in low-income zones can only reduce their mobility by around 20% during lockdown (Carranza et al., 2020).

Finally, we show five examples within Chile of different temporal changes in high-frequency ASN amplitudes, in which the majority show similar patterns of gradual decreases in RMS displacements due to lockdowns or mobil-

ity restrictions. The cities like Iquique, La Serena, and Concepción are highly populated regions in Chile, whereas the temporal variations on ASN are comparable with other observations in the MR urban area. Valparaíso, the second most populated region, only presents ASN dominated by the ocean in the frequency band analysed. At Puerto Williams, a small town in the extreme south of South America, the decrease in ASN can be explained by the flight operation and restrictions, due to the closeness of the seismic stations and the local airfield. Nonetheless, further analyses including other sources of mobility data and epidemiological indicators are needed.

5 Conclusions

Although seismic data have been used to study wave propagation from seismic sources or to monitor different geological phenomena, temporal changes in the amplitudes of ASN have also been used to monitor population mobility within cities. We demonstrate that we can analyse the dynamics of the population and urban mobility through high-frequency ASN variations. The public health policies implemented to mitigate the spread of COVID-19 had an important influence on citizens mobility: lockdown, curfew, dynamic quarantines, and other restrictions affected the ASN amplitudes recorded by seismological stations. These temporal variations were also observed during the periods of lockdown and gradual ending of confinement in the MR of Chile, in which a sharp decrease in ASN amplitudes was observed in the station within urban areas, in contrast to those in rural areas. Other mobility data were also compared with temporal variations in ASN amplitudes, showing good agreement with data from Apple devices, public transport transactions, and national flights. In mid-April, during the rise of the number of positive COVID-19 cases worldwide, the government declared the end of the first lockdown in eastern Santiago. The public policy measure was followed by an increase in the citizen's mobility, a behaviour that was recorded by seismic stations. Most interestingly, during that period the effective reproductive number increased until it reached a maximum at the beginning of May. Thereafter, the Chilean government declared a second lockdown due to the increase in the number of positive COVID-19 cases in the MR. This observation suggests that the early end of the first lockdown in Santiago, while the pandemic situation was not controlled, increased the mobility within cities and promoted virus transmission in those weeks, reaching a maximum number of positive cases in mid-June in the MR. Finally, we showed the possibility of real-time monitoring of the population mobility dynamics through time variations of high-frequency ASN amplitudes in both broadband and accelerometer stations. These seismometers are typically used for the management of seismological networks in urban areas; however, recent studies show the potential opportunity to use them as a tool to teach seismology to school students (e.g. Subedi et al., 2020) and

increase the interest of society toward Earth sciences (e.g. Diaz et al., 2020). The analysis of this study could be implemented in other high-density cities of the world with important implications for our society as it is directly or indirectly affected by the COVID-19 pandemic.

Code availability. The seismic data analysis and reproducibility of high-frequency ASN have been done using the open-source SeismoRMS code kindly distributed by Lecocq et al. (2020b, <https://doi.org/10.5281/zenodo.3820046>). Figures 1 and S1 were made using the Generic Mapping Tools (GMT) software version 5.3.1 (Wessel et al., 2013).

Data availability. The data shown in this study are available upon request from the authors. Seismic data from CSN, networks C and C1 (<https://doi.org/10.7914/SN/C1>, Universidad de Chile, 2013), are publicly available through the Incorporated Research Institutions for Seismology Data Management Center (IRIS-DMC). Apple mobility data are available at <https://covid19.apple.com/mobility> (last access: 2 October 2020, Apple, 2020). Public transport transactions from the Chilean Ministry of Transport and flight data from Civil Aeronautical Board of Chile are freely available at <https://github.com/MinCiencia/Datos-COVID19> (Ministry of Science, 2020). Effective reproductive number estimation and other epidemiological parameters from ICOVID are available at <https://www.icovidchile.cl/> (ICOID Chile, 2020).

Supplement. The supplement related to this article is available online at: <https://doi.org/10.5194/se-12-1075-2021-supplement>.

Author contributions. JO and SR wrote the manuscript, and JO did the seismic noise analysis.

Competing interests. The authors declare that they have no conflict of interest.

Special issue statement. This article is part of the special issue “Social seismology – the effect of COVID-19 lockdown measures on seismology”. It is not associated with a conference.

Acknowledgements. This work was partially funded by the Agencia Nacional de Investigación y Desarrollo/Fondo Nacional de Desarrollo Científico y Tecnológico (ANID/FONDECYT; project no. 1200779) and Programa de Riesgo Sísmico (Actividades de Interés Nacional [AIN], Universidad de Chile). Javier Ojeda acknowledges support from the ANID (Scholarship ANID-PFCHA/Doctorado Nacional/2020-21200903). We especially thank the operators of the CSN of the Universidad de Chile, who despite the pandemic have continued monitoring and maintaining the Chilean Seismological Network. We would like to acknowledge the fruitful comments and suggestions of two anonymous review-

ers and Raphael De Plaen (Topical Editor) that helped to improve our manuscript.

Financial support. This research has been supported by the Agencia Nacional de Investigación y Desarrollo (project no. 1200779).

Review statement. This paper was edited by Raphael De Plaen and reviewed by two anonymous referees.

References

- Apple: Mobility Trends Reports, available at: <https://www.apple.com/covid19/mobility>, (last access: 2 October 2020), 2020.
- Ardhuin, F., Stutzmann, E., Schimmel, M., and Mangeney, A.: Ocean wave sources of seismic noise, *J. Geophys. Res.-Oceans*, 116, C09004, <https://doi.org/10.1029/2011JC006952>, 2011.
- Barrientos, S.: The seismic network of Chile, *Seismol. Res. Lett.*, 89, 467–474, 2018.
- Bennett, M.: All things equal? Heterogeneity in policy effectiveness against COVID-19 spread in Chile, *World Development*, 137, 105208, <https://doi.org/10.1016/j.worlddev.2020.105208>, 2021.
- Boese, C., Wotherspoon, L., Alvarez, M., and Malin, P.: Analysis of anthropogenic and natural noise from multilevel borehole seismometers in an urban environment, Auckland, New Zealand, *Bull. Seismol. Soc. Am.*, 105, 285–299, 2015.
- Bonnefoy-Claudet, S., Cotton, F., and Bard, P.-Y.: The nature of noise wavefield and its applications for site effects studies: A literature review, *Earth-Sci. Rev.*, 79, 205–227, 2006.
- Caicedo-Ochoa, Y., Rebellón-Sánchez, D. E., Peñalosa-Rallón, M., Cortés-Motta, H. F., and Méndez-Fandiño, Y. R.: Effective Reproductive Number estimation for initial stage of COVID-19 pandemic in Latin American Countries, *Int. J. Infect. Dis.*, 95, 316–318, 2020.
- Canals, M., Cuadrado, C., Canals, A., Yohannessen, K., Lefio, L. A., Bertoglia, M. P., Eguiguren, P., Siches, I., Iglesias, V., and Arteaga, O.: Epidemic trends, public health response and health system capacity: the Chilean experience in four months of the COVID-19 pandemic, *Revista Panamericana de Salud Pública*, 44, e99, <https://doi.org/10.26633/RPSP.2020.99>, 2020.
- Cannata, A., Cannavò, F., Di Grazia, G., Aliotta, M., Cassisi, C., De Plaen, R. S. M., Gresta, S., Lecocq, T., Montalto, P., and Sciotto, M.: Seismic evidence of the COVID-19 lockdown measures: a case study from eastern Sicily (Italy), *Solid Earth*, 12, 299–317, <https://doi.org/10.5194/se-12-299-2021>, 2021.
- Carranza, A., Goic, M., Lara, E., Olivares, M., Weintraub, G. Y., Covarrubia, J., Escobedo, C., Jara, N., and Basso, L. J.: The social divide of social distancing: Lockdowns in Santiago during the covid-19 pandemic, SSRN 3691373 [Preprint], <https://doi.org/10.2139/ssrn.3691373>, 2020.
- Cessaro, R. K.: Sources of primary and secondary microseisms, *Bull. Seismol. Soc. Am.*, 84, 142–148, 1994.
- Contreras, S., Villavicencio, H. A., Medina-Ortiz, D., Saavedra, C. P., and Olivera-Nappa, Á.: Real-time estimation of R_t for supporting public-health policies against COVID-19, *Frontiers in Public Health*, 8, 970, <https://doi.org/10.3389/fpubh.2020.556689>, 2020.
- Cori, A., Ferguson, N. M., Fraser, C., and Cauchemez, S.: A new framework and software to estimate time-varying reproduction numbers during epidemics, *Am. J. Epidemiol.*, 178, 1505–1512, 2013.
- Cuadrado, C., Monsalves, M. J., Gajardo, J., Bertoglia, M. P., Najera, M., Alfaro, T., Canals, M., Kaufmann, J., and Peña, S.: Impact of small-area lockdowns for the control of the COVID-19 pandemic, *MedRxiv [Preprint]*, <https://doi.org/10.1101/2020.05.05.20092106>, 2020.
- De Plaen, R. S. M., Márquez-Ramírez, V. H., Pérez-Campos, X., Zuñiga, F. R., Rodríguez-Pérez, Q., Gómez González, J. M., and Capra, L.: Seismic signature of the COVID-19 lockdown at the city scale: a case study with low-cost seismometers in the city of Querétaro, Mexico, *Solid Earth*, 12, 713–724, <https://doi.org/10.5194/se-12-713-2021>, 2021.
- Denolle, M. A. and Nissen-Meyer, T.: Quiet Anthropocene, *Quiet Earth, Science*, 369, 1299–1300, 2020.
- Dias, F. L., Assumpção, M., Peixoto, P. S., Bianchi, M. B., Collaço, B., and Calhau, J.: Using Seismic Noise Levels to Monitor Social Isolation: An Example From Rio de Janeiro, Brazil, *Geophys. Res. Lett.*, 47, e2020GL088748, <https://doi.org/10.1029/2020GL088748>, 2020.
- Díaz, J., Ruiz, M., Sánchez-Pastor, P. S., and Romero, P.: Urban seismology: On the origin of earth vibrations within a city, *Sci. Rep.*, 7, 1–11, 2017.
- Díaz, J., Schimmel, M., Ruiz, M., and Carbonell, R.: Seismometers within cities: a tool to connect Earth Sciences and society, *Front. Earth Sci.*, 8, 9, <https://doi.org/10.3389/feart.2020.00009>, 2020.
- Díaz, J., Ruiz, M., and Jara, J.-A.: Seismic monitoring of urban activity in Barcelona during the COVID-19 lockdown, *Solid Earth*, 12, 725–739, <https://doi.org/10.5194/se-12-725-2021>, 2021.
- Gostic, K. M., McGough, L., Baskerville, E. B., Abbott, S., Joshi, K., Tedijanto, C., Kahn, R., Niehus, R., Hay, J. A., De Salazar, P. M., Hellewell, J., Meakin, S., Munday, J. D., Bosse, N. I., Sherrat, K., Thompson, R. N., White, L. F., Huisman, J. S., Scire, J., Bonhoeffer, S., Stadler, T., Wallinga, J., Funk, S., Lipsitch, M., and Cobey, S.: Practical considerations for measuring the effective reproductive number, *R t*, *PLoS Comput. Biol.*, 16, e1008409, <https://doi.org/10.1371/journal.pcbi.1008409>, 2020.
- Green, D. N., Bastow, I. D., Dashwood, B., and Nippress, S. E.: Characterizing broadband seismic noise in Central London, *Seismol. Res. Lett.*, 88, 113–124, 2017.
- Groos, J. and Ritter, J.: Time domain classification and quantification of seismic noise in an urban environment, *Geophys. J. Int.*, 179, 1213–1231, 2009.
- Guenaga, D. L., Marcillo, O. E., Velasco, A. A., Chai, C., and Maceira, M.: The Silencing of US Campuses Following the COVID-19 Response: Evaluating Root Mean Square Seismic Amplitudes Using Power Spectral Density Data, *Seismol. Soc. Am.*, 92, 941–950, 2021.
- ICOVID Chile: Dinámica de Contagios, available at: <https://www.icovidchile.cl> (last access: 2 October 2020), 2020.
- INE: Instituto Nacional de Estadísticas, Censo 2017, available at: <http://resultados.censo2017.cl> (last access: 13 November 2020), 2017.
- Karegar, M. A. and Kusche, J.: Imprints of COVID-19 lockdown on GNSS observations: An initial demonstration using GNSS interferometric reflectometry, *Geophys. Res. Lett.*, 47, e2020GL089647, <https://doi.org/10.1029/2020GL089647>, 2020.

- Lecocq, T., Hicks, S. P., Van Noten, K., Van Wijk, K., Koelemeijer, P., De Plaen, R. S., Massin, F., Hillers, G., Anthony, R. E., Apoloner, M.-T., Arroyo-Solórzano, M., Assink, J. D., Büyükkapınar, P., Cannata, A., Cannavo, F., Carrasco, S., Caudron, C., Chaves, E. J., Cornwell, D. G., Craig, D., den Ouden, O. F., Diaz, J., Donner, S., Evangelidis, C. P., Evers, L., Fauville, B., Fernandez, G. A., Giannopoulos, D., Gibbons, S. J., Girona, T., Grecu, B., Grunberg, M., Hetényi, G., Horleston, A., Inza, A., Irving, J. C., Jamalrehyani, M., Kafka, A., Koymans, M., Labeledz, C. R., Larose, E., Lindsey, N. J., McKinnon, M., Megies, T., Miller, M. S., Minarik, W., Moresi, L., Márquez-Ramírez, V. H., Möllhoff, M., Nesbitt, I. M., Niyogi, S., Ojeda, J., Oth, A., Proud, S., Pulli, J., Retaillieu, L., Rintamäki, A. E., Satriano, C., Savage, M. K., Shani-Kadmiel, S., Sleeman, R., Sokos, E., K., S., Stott, A. E., Subedi, S., Sørensen, M. B., Taira, T., Tapia, M., Turhan, F., van der Pluijm, B., Vanstone, M., Vergne, J., Vuorinen, T. A., Warren, T., Wassermann, J., and Xiao, H.: Global quieting of high-frequency seismic noise due to COVID-19 pandemic lockdown measures, *Science*, 369, 1338–1343, 2020a.
- Lecocq, T., Massin, F., Satriano, C., Vanstone, M., and Megies, T.: SeismoRMS – A simple python/jupyter notebook package for studying seismic noise changes (Version 1.0), Zenodo [code], <https://doi.org/10.5281/zenodo.3820046>, 2020b.
- Leyton, F., Leopold, A., Hurtado, G., Pastén, C., Ruiz, S., Montalva, G., and Saéz, E.: Geophysical characterization of the Chilean seismological stations: First results, *Seismol. Res. Lett.*, 89, 519–525, 2018a.
- Leyton, F., Pastén, C., Ruiz, S., Idini, B., and Rojas, F.: Empirical site classification of CSN network using strong-motion records, *Seismol. Res. Lett.*, 89, 512–518, 2018b.
- Lindsey, N. J., Yuan, S., Lellouch, A., Gualtieri, L., Lecocq, T., and Biondi, B.: City-scale dark fiber DAS measurements of infrastructure use during the COVID-19 pandemic, *Geophys. Res. Lett.*, 47, e2020GL089931, <https://doi.org/10.1029/2020GL089931>, 2020.
- Ministry of Science: Public transport, epidemiological and flight data, available at: <https://github.com/MinCiencia/Datos-COVID19> (last access: 11 November 2020), 2020.
- Poli, P., Boaga, J., Molinari, I., Cascone, V., and Boschi, L.: The 2020 coronavirus lockdown and seismic monitoring of anthropic activities in Northern Italy, *Sci. Rep.*, 10, 1–8, 2020.
- Riley, S., Fraser, C., Donnelly, C. A., Ghani, A. C., Abu-Raddad, L. J., Hedley, A. J., Leung, G. M., Ho, L.-M., Lam, T.-H., Thach, T. Q., Chau, P., Chan, K. P., Lo, S. V., Leung, P. Y., Tsang, T., Ho, W., Lee, K. H., Lau, E. M., Ferguson, N. M., and Anderson, R. M.: Transmission dynamics of the etiological agent of SARS in Hong Kong: impact of public health interventions, *Science*, 300, 1961–1966, 2003.
- Subedi, S., Hetényi, G., Denton, P., and Sauron, A.: Seismology at School in Nepal: a program for educational and citizen seismology through a low-cost seismic network, *Front. Earth Sci.*, 8, 73, <https://doi.org/10.3389/feart.2020.00073>, 2020.
- Tariq, A., Undurraga, E. A., Laborde, C. C., Vogt-Geisse, K., Luo, R., Rothenberg, R., and Chowell, G.: Transmission dynamics and control of COVID-19 in Chile, March–October, 2020, *PLOS Neglected Tropical Diseases*, 15, e0009070, <https://doi.org/10.1371/journal.pntd.0009070>, 2021.
- Universidad de Chile: Red Sismologica Nacional. International Federation of Digital Seismograph Networks, <https://doi.org/10.7914/SN/C1>, 2013.
- van Wijk, K., Chamberlain, C. J., Lecocq, T., and Van Noten, K.: Seismic monitoring of the Auckland Volcanic Field during New Zealand’s COVID-19 lockdown, *Solid Earth*, 12, 363–373, <https://doi.org/10.5194/se-12-363-2021>, 2021.
- Walker, P. G., Whittaker, C., Watson, O. J., Baguelin, M., Winskill, P., Hamlet, A., Djafaara, B. A., Cucunubá, Z., Mesa, D. O., Green, W., Thompson, H., Nayagam, S., Ainslie, K. E. C., Bhattia, S., Bhatt, S., Boonyasiri, A., Boyd, O., Brazeau, N. F., Cattarino, L., Cuomo-Dannenburg, G., Dighe, A., Donnelly, C. A., Dorigatti, I., Van Elsland, S. L., FitzJohn, R., Fu, H., Gaythorpe, K. A. M., Geidelberg, L., Grassly, N., Haw, D., Hayes, S., Hinsley, W., Imai, N., Jorgensen, D., Knock, E., Laydon, D., Mishra, S., Nedjati-Gilani, G., Okell, L. C., Unwin, H. J., Verity, R., Vollmer, M., Walters, C. E., Wang, H., Wang, Y., Xi, X., Lalloo, D. G., Ferguson, N. M., and Ghani, A. C.: The impact of COVID-19 and strategies for mitigation and suppression in low- and middle-income countries, *Science*, 369, 413–422, 2020.
- Welch, P.: The use of fast Fourier transform for the estimation of power spectra: a method based on time averaging over short, modified periodograms, *IEEE Trans. Audio*, 15, 70–73, 1967.
- Wessel, P., Smith, W. H., Scharroo, R., Luis, J., and Wobbe, F.: Generic mapping tools: improved version released, *Eos, Transactions American Geophysical Union*, 94, 409–410, 2013.
- Xiao, H., Eilon, Z. C., Ji, C., and Tanimoto, T.: COVID-19 Societal Response Captured by Seismic Noise in China and Italy, *Seismol. Soc. Am.*, 91, 2757–2768, 2020.