

# The SEDIGISM survey: First Data Release and overview of the Galactic structure

F. Schuller<sup>1,2,3\*</sup>, J. S. Urquhart<sup>1,4\*</sup>, T. Csengeri<sup>1,5</sup>, D. Colombo<sup>1</sup>, A. Duarte-Cabral<sup>1,6</sup>, M. Mattern<sup>1</sup>, A. Ginsburg<sup>7</sup>, A. R. Pettitt<sup>8</sup>, F. Wyrowski<sup>1</sup>, L. Anderson<sup>9</sup>, F. Azagra<sup>2</sup>, P. Barnes<sup>10</sup>, M. Beltran<sup>11</sup>, H. Beuther<sup>12</sup>, S. Billington<sup>1,4</sup>, L. Bronfman<sup>13</sup>, R. Cesaroni<sup>11</sup>, C. Dobbs<sup>14</sup>, D. Eden<sup>1,15</sup>, M.-Y. Lee<sup>16</sup>, S.-N. X. Medina<sup>1</sup>, K. M. Menten<sup>1</sup>, T. Moore<sup>15</sup>, F. M. Montenegro-Montes<sup>2</sup>, S. Ragan<sup>1,6</sup>, A. Rigby<sup>1,6</sup>, M. Riener<sup>12</sup>, D. Russeil<sup>17</sup>, E. Schisano<sup>1,18</sup>, A. Sanchez-Monge<sup>19</sup>, A. Traficante<sup>1,18</sup>, A. Zavagno<sup>17</sup>, C. Agurto<sup>2</sup>, S. Bontemps<sup>5</sup>, R. Finger<sup>13</sup>, A. Giannetti<sup>20</sup>, E. Gonzalez<sup>2</sup>, A. K. Hernandez<sup>21</sup>, T. Henning<sup>12</sup>, J. Kainulainen<sup>22</sup>, J. Kauffmann<sup>23</sup>, S. Leurini<sup>24</sup>, S. Lopez<sup>7</sup>, F. Mac-Auliffe<sup>2</sup>, P. Mazumdar<sup>1</sup>, S. Molinari<sup>1,18</sup>, F. Motte<sup>25</sup>, E. Muller<sup>26</sup>, Q. Nguyen-Luong<sup>27</sup>, R. Parra<sup>2</sup>, J.-P. Perez-Beaupuits<sup>1,2</sup>, P. Schilke<sup>19</sup>, N. Schneider<sup>1,19</sup>, S. Suri<sup>19</sup>, L. Testi<sup>28</sup>, K. Torstensson<sup>2</sup>, V. S. Veena<sup>19</sup>, P. Venegas<sup>2</sup>, K. Wang<sup>29</sup> and M. Wienen<sup>1,14</sup>

*Affiliations are listed at the end of the paper*

Accepted 2020 July 24. Received 2020 July 21; in original form 2020 April 17

## ABSTRACT

The SEDIGISM (Structure, Excitation and Dynamics of the Inner Galactic Interstellar Medium) survey used the APEX telescope to map 84 deg<sup>2</sup> of the Galactic plane between  $\ell = -60^\circ$  and  $+31^\circ$  in several molecular transitions, including <sup>13</sup>CO(2–1) and C<sup>18</sup>O(2–1), thus probing the moderately dense ( $\sim 10^3$  cm<sup>-3</sup>) component of the interstellar medium. With an angular resolution of 30 arcsec and a typical  $1\sigma$  sensitivity of 0.8–1.0 K at 0.25 km s<sup>-1</sup> velocity resolution, it gives access to a wide range of structures, from individual star-forming clumps to giant molecular clouds and complexes. The coverage includes a good fraction of the first and fourth Galactic quadrants, allowing us to constrain the large-scale distribution of cold molecular gas in the inner Galaxy. In this paper, we provide an updated overview of the full survey and the data reduction procedures used. We also assess the quality of these data and describe the data products that are being made publicly available as part of this First Data Release (DR1). We present integrated maps and position–velocity maps of the molecular gas and use these to investigate the correlation between the molecular gas and the large-scale structural features of the Milky Way such as the spiral arms, Galactic bar and Galactic Centre. We find that approximately 60 per cent of the molecular gas is associated with the spiral arms and these appear as strong intensity peaks in the derived Galactocentric distribution. We also find strong peaks in intensity at specific longitudes that correspond to the Galactic Centre and well-known star-forming complexes, revealing that the <sup>13</sup>CO emission is concentrated in a small number of complexes rather than evenly distributed along spiral arms.

**Key words:** surveys – ISM: structure – Galaxy: kinematics and dynamics – radio lines: ISM.

## 1 INTRODUCTION

Over the last few decades, many systematic continuum surveys of the Galactic plane have been carried out over the full electromagnetic spectrum, from the infrared (e.g. GLIMPSE, Churchwell et al. 2009; MIPS GAL, Carey et al. 2009; Hi-GAL, Molinari et al. 2010) to the (sub)millimetre (ATLASGAL, Schuller et al. 2009; BGPS, Aguirre et al. 2011; JPS, Moore et al. 2015; Eden et al. 2017), and radio range (CORNISH, Hoare et al. 2012; Purcell et al. 2013; THOR, Beuther et al. 2016, Wang et al. 2020; GLOSTAR, Medina et al. 2019). These

continuum surveys have been complemented by spectral line surveys, which are essential for estimating distances and determining physical properties. Some examples include the <sup>12</sup>CO(1–0) survey from Dame, Hartmann & Thaddeus (2001), the CO Boston University-Five College Radio Astronomy Observatory Galactic Ring Survey (GRS; Jackson et al. 2006), the Census of High- and Medium-mass Protostars (CHaMP; Barnes et al. 2011), the CO High-Resolution Survey (COHRS; Dempsey et al. 2013), the CO Heterodyne Inner Milky Way Plane Survey (CHIMPS; Rigby et al. 2016, 2019), the FOREST unbiased Galactic plane imaging survey with Nobeyama (FUGIN; Umemoto et al. 2017), the Mopra Southern Galactic Plane CO Survey (Burton et al. 2013; Braiding et al. 2018), the Three-mm Ultimate Mopra Milky Way Survey (ThrUMMS; Barnes et al. 2015),

\* E-mail: schuller@mpifr-bonn.mpg.de (FS); j.s.urquhart@gmail.com (JSU)

**Table 1.** Main characteristics of recent, large-scale CO surveys of the inner Galactic plane.

Survey name	Transitions	Coverage	Angular resolution (arcsec)	Velocity resolution (km s <sup>-1</sup> )	rms (T <sub>mb</sub> ) (K)	Reference
GRS	<sup>13</sup> CO ( <i>J</i> = 1–0)	18° ≤ <i>ℓ</i> ≤ 55°:7,   <i>b</i>   ≤ 1°:0	46	0.21	~0.2	Jackson et al. (2006)
CHaMP	CO/ <sup>13</sup> CO/C <sup>18</sup> O/ CN/N <sub>2</sub> H <sup>+</sup> /HNC/ HCO <sup>+</sup> /HCN ( <i>J</i> = 1–0)	280° ≤ <i>ℓ</i> ≤ 300°, −4° ≤ <i>b</i> ≤ +2°	37–40	0.08–0.10	0.4–0.7	Barnes et al. (2011)
COHRS	<sup>12</sup> CO ( <i>J</i> = 3–2)	10° ≤ <i>ℓ</i> ≤ 65°,   <i>b</i>   ≤ 0°:5	16	1	~1	Dempsey, Thomas & Currie (2013)
CHIMPS	<sup>13</sup> CO/C <sup>18</sup> O ( <i>J</i> = 3–2)	28° ≤ <i>ℓ</i> ≤ 46°,   <i>b</i>   ≤ 0°:5	15	0.5	~0.6	Rigby et al. (2016)
FUGIN	CO/ <sup>13</sup> CO/C <sup>18</sup> O ( <i>J</i> = 1–0)	10° ≤ <i>ℓ</i> ≤ 50°,   <i>b</i>   ≤ 1°:0 198° ≤ <i>ℓ</i> ≤ 236°,   <i>b</i>   ≤ 1°:0	20	1.3	0.3–0.5	Umamoto et al. (2017)
Mopra-CO	CO/ <sup>13</sup> CO/C <sup>18</sup> O/ C <sup>17</sup> O ( <i>J</i> = 1–0)	305° ≤ <i>ℓ</i> ≤ 345°,   <i>b</i>   ≤ 0°:5	35	0.1	0.7–1.5	Burton et al. (2013)
ThrUMMS	CO/ <sup>13</sup> CO/C <sup>18</sup> O/ CN ( <i>J</i> = 1–0)	300° ≤ <i>ℓ</i> ≤ 360°,   <i>b</i>   ≤ 1°:0	72	0.3	0.7–1.3	Barnes et al. (2015)
MWISP <sup>a</sup>	CO/ <sup>13</sup> CO/C <sup>18</sup> O ( <i>J</i> = 1–0)	−10° ≤ <i>ℓ</i> ≤ 250°,   <i>b</i>   ≤ 5°:2	50	0.16	0.3–0.5	Su et al. (2019)
FQS	<sup>12</sup> CO/ <sup>13</sup> CO ( <i>J</i> = 1–0)	220° ≤ <i>ℓ</i> ≤ 240°, −2°:5 ≤ <i>b</i> ≤ 0°	55	0.26/0.65	0.3–1.3	Benedettini et al. (2020)
SEDIGISM	<sup>13</sup> CO/C <sup>18</sup> O ( <i>J</i> = 2–1)	−60° ≤ <i>ℓ</i> ≤ +18°,   <i>b</i>   ≤ 0°:5 + W43	30	0.25	0.8–1.1	Schuller et al. (2017)

<sup>a</sup>Observations for the MWISP survey are still ongoing; the Su et al. (2019) paper focuses on a region covering 25°:8 ≤ *ℓ* ≤ +49°:7.

the Milky Way Imaging Scroll Painting (MWISP; Su et al. 2019), and the Forgotten Quadrant Survey (Benedettini et al. 2020). In Table 1 and Fig. 1, we present a summary of these recently completed CO surveys and show their coverage on a schematic top-down view of the Milky Way.

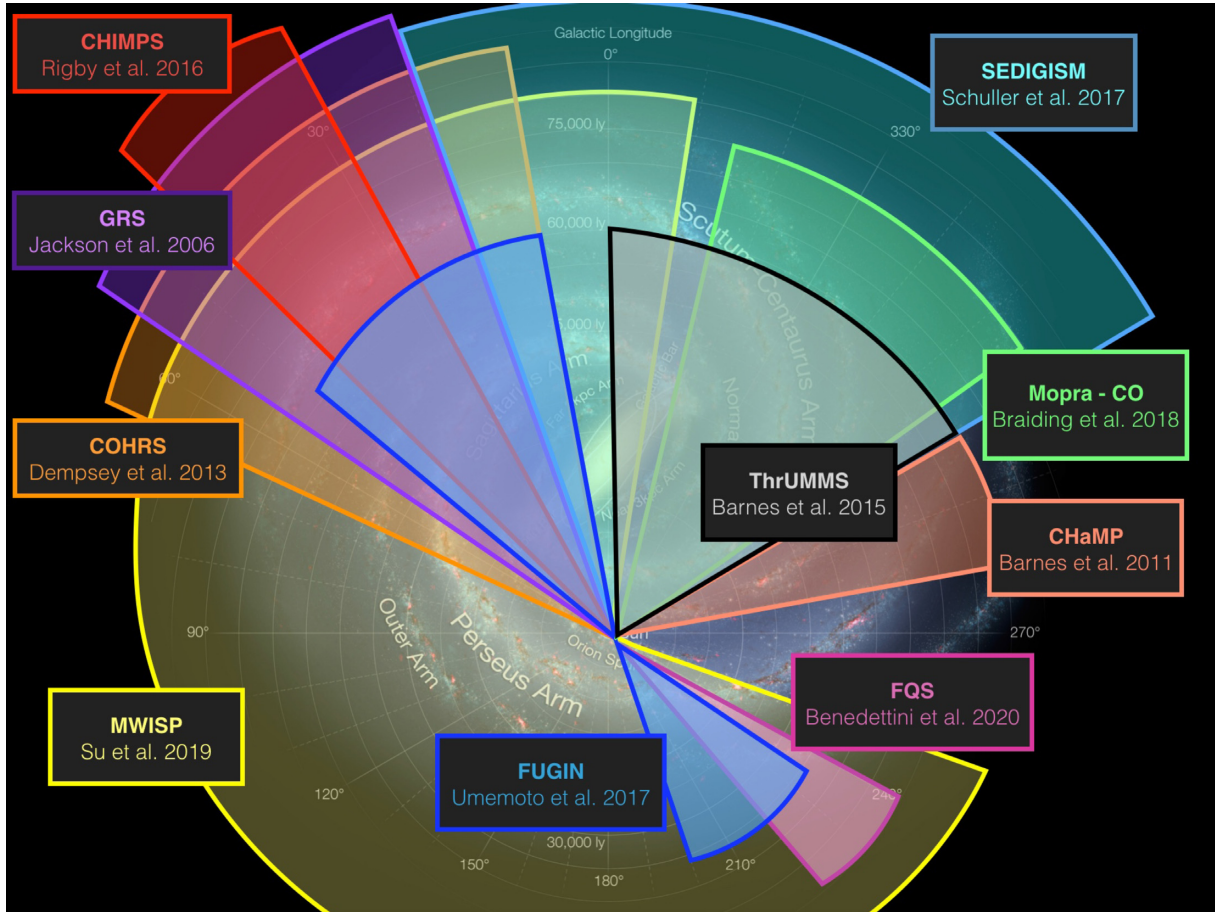
This wealth of data has greatly enhanced our view of the Galactic structure and its major components. However, there is still no consensus on the exact structure of the Galaxy. For instance, it is not firmly established how many spiral arms are present and what is their exact location (e.g. Taylor & Cordes 1993; Drimmel 2000; Siebert et al. 2011; García et al. 2014; Reid et al. 2014, 2016; Vallée 2017; Gaia Collaboration et al. 2018), nor what is the exact size and orientation angle of the central bar (e.g. Bissantz, Englmaier & Gerhard 2003; Pettitt et al. 2014; Li et al. 2016b) – thus making it difficult to pin-point and study the large-scale distribution of molecular gas in the Galaxy.

Progress is also being made in the characterisation of the earliest phases of (high-mass) star formation (e.g. Urquhart et al. 2013a,b, 2014b, 2018; Csengeri et al. 2014, 2017; Elia et al. 2017; Traficante et al. 2017; Pitts, Barnes & Varosi 2019), but the role of large-scale structures and the interplay between the various phases of the interstellar medium (ISM) are still not well constrained. Key questions remain, which are also relevant to the study of star formation in external galaxies, such as: What role do the spiral arms play in the formation of molecular clouds and star formation, and what controls the star formation efficiency (SFE). Observations of nearby spiral galaxies have revealed a tight correlation between dense molecular gas and enhancements of star formation activity within spiral arms (e.g. Leroy et al. 2017). Also in the Milky Way, it is clear that spiral arms are rich in molecular gas. For example, recent results from the THOR survey reveal an increase by a factor of 6 of atomic to molecular gas ratio from the arms to inter-arm regions. However, it is not clear whether this is due to the collection of molecular clouds that fall into their gravitational potential (e.g. Foyle et al. 2010), or if the

molecular gas forms within the spiral arms themselves. Furthermore, it is unclear if the enhanced star-forming activity observed (Urquhart et al. 2014a) is directly attributable to the presence of spiral arms or is simply the result of source crowding within the arms (Moore et al. 2012).

The SFE is the result of a number of stages: the conversion of neutral gas to molecular clouds, then to dense, potentially star-forming clumps, and finally to proto-stars and young stellar objects. Each of these stages has its own conversion efficiency. Identifying the stage that is primarily affected by the environment could bring constraints on the dominant SF-regulating mechanism. Some progress has been made recently to investigate the effects of environment on the SFE in our Galaxy, based on limited samples of objects (Eden et al. 2012; Moore et al. 2012; Longmore et al. 2013; Ragan et al. 2018). In order to extend these studies to much larger samples, we have performed a large-scale (~84 deg<sup>2</sup>) spectroscopic survey of the inner Galactic disc: the SEDIGISM (Structure, Excitation and Dynamics of the Inner Galactic Interstellar Medium) survey. The spectroscopic data provide essential information on the distribution of interstellar matter along the line of sight, thus complementing the existing continuum surveys. These data allow us to achieve an unbiased view of the moderately dense ISM over a large fraction of the Galactic disc. The SEDIGISM survey covers a large portion of the fourth quadrant at high velocity and angular resolution and will make a significant contribution to our understanding of Galactic structure.

The survey has been described in Schuller et al. (2017, hereafter Paper I). It consists of spectroscopic data covering the inner Galactic plane in the frequency range 217–221 GHz, which includes the <sup>13</sup>CO (2–1) and C<sup>18</sup>O (2–1) molecular lines, at 30-arcsec angular resolution. Thus, this survey complements the other spectroscopic surveys that have been previously mentioned. This is the first of three papers that describe the survey data and present the initial results. In this paper, we provide an overview of the survey data and a first look at the connection between the molecular gas and large-scale



**Figure 1.** Milky Way coverage of recent CO surveys described in Table 1. The background image is a schematic of the Galactic disc as viewed from the Northern Galactic Pole [courtesy of NASA/JPL-Caltech/R. Hurt (SSC/Caltech)] showing the known large-scale features of the Milky Way, such as the spiral arms and the Galactic bar. The survey wedges emanate from the position of the Sun; their respective lengths are arbitrary and do not reflect the sensitivity of each survey.

structural features of the Galaxy (we will refer to this as Paper II). In the accompanying papers, we present a catalogue of giant molecular clouds (GMCs) and investigate their properties with respect to their star formation activity and their Galactic distribution (Duarte-Cabral et al., this volume; hereafter Paper III), and we investigate the dense gas fraction and SFE as a function of Galactic position (Urquhart et al., this volume; hereafter Paper IV).

The structure of this paper is as follows: We describe the SEDIGISM observations and data quality in Section 2. We present the large-scale distribution of  $^{13}\text{CO}$  and  $\text{C}^{18}\text{O}$  in Section 3 and investigate the association between molecular gas and spiral arms. We discuss some interesting regions in Section 4, and demonstrate the usability of other molecular transitions within the spectral range covered by the data for scientific exploitation in Section 5. Finally, we summarize our conclusions in Section 6.

## 2 THE SURVEY DATA

### 2.1 Observations

Observations were done with the 12-m diameter Atacama Pathfinder Experiment telescope (APEX; Güsten et al. 2006), located at 5100-m altitude on Llano de Chajnantor, in Chile. The observational setup and observing strategy have been described in Paper I and

**Table 2.** Summary of the APEX observational parameters.

Parameter	Value
Galactic longitude range	$-60^\circ < \ell < 18^\circ$ and $29^\circ < \ell < 31^\circ$
Galactic latitude range <sup>a</sup>	$-0.5^\circ < b < 0.5^\circ$
Instrument	SHeFI (APEX-1)
Frequency	217–221 GHz
Bandwidth	4 GHz
Angular resolution	30 arcsec
Velocity resolution	$0.1 \text{ km s}^{-1}$
Smoothed velocity resolution	$0.25 \text{ km s}^{-1}$
Mean noise ( $T_{\text{mb}}$ ) <sup>b</sup>	$\sim 0.8\text{--}1.0 \text{ K}$
Main beam efficiency ( $\eta_{\text{mb}}$ ) <sup>c</sup>	0.75

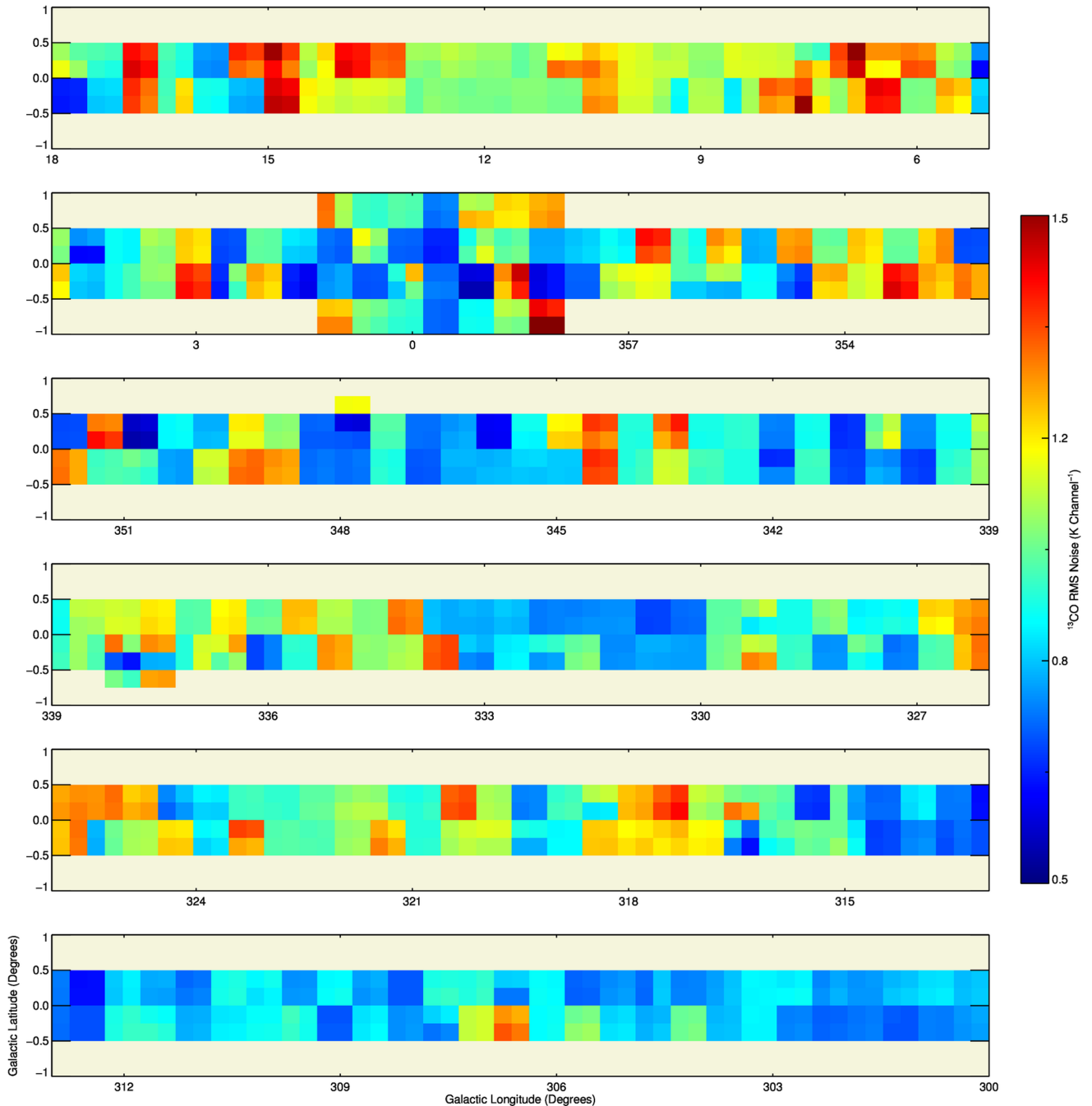
<sup>a</sup>The latitude range was extended to  $-1^\circ < b < 1^\circ$  towards the Central Molecular Zone (CMZ), to  $b < -0.75$  towards the Nessie filament at  $\ell \sim 338^\circ$ , and to  $b < +0.75$  towards the RCW 120 region at  $\ell \sim 348^\circ$ .

<sup>b</sup>Per  $0.25 \text{ km s}^{-1}$  channel.

<sup>c</sup><http://www.apex-telescope.org/telescope/efficiency/index.php>.

the key observational parameters are summarized in Table 2; here we provide a brief overview of the most important features of this survey.

The prime target lines are  $^{13}\text{CO}(2-1)$  and  $\text{C}^{18}\text{O}(2-1)$  but the 4-GHz instantaneous bandwidth also includes a number of tran-



**Figure 2.** Spatial distribution of the local noise  $\sigma_{\text{rms}}$  over the survey area (see the text for details). The median values computed in  $0.25 \times 0.25 \text{ deg}^2$  subcubes are shown here in colours (see colour scale on the right-hand side).

sitions from other species ( $\text{H}_2\text{CO}$ ,  $\text{CH}_3\text{OH}$ ,  $\text{SO}$ ,  $\text{SO}_2$ ,  $\text{HNC}$ ,  $\text{HC}_3\text{N}$ ,  $\text{SiO}$ ). The observations have been carried out in tiles of  $0.25 \times 0.50$  using position switching in the on-the-fly mapping mode. Each position in the survey is covered by at least two maps observed in orthogonal scanning directions, along galactic longitude and latitude. The  $0.25 \times 0.50$  tiles oriented along  $\ell$  or  $b$  were sometimes observed under different conditions. As a result of this plaiting, only  $0.25 \times 0.25$  subcubes were observed with roughly constant conditions and show a uniform noise level, as visible in Fig. 2. Some fields were observed in  $0.5 \times 0.5$  maps at the beginning of the survey, also with two orthogonal scanning directions.

The reference positions for each field were selected to be  $\pm 1.5$  off the Galactic mid-plane to avoid contamination, and while this was sufficient to ensure the  $\text{C}^{18}\text{O}(2-1)$  data were clean, this was not always the case for the brighter  $^{13}\text{CO}(2-1)$  transition. Therefore, we have systematically performed pointed observations towards the reference points, using an off position further from the Galactic plane. More details can be found in Appendix A and in Table A1.<sup>1</sup>

<sup>1</sup>Only a small portion of the data is provided here. The full table is only available in the online version of this article via <http://mnras.oxfordjournals.org/...> or at the CDS via <http://cdsweb.u-strasbg.fr/cgi-bin/qcat?J/MNRAS/...>

The full survey coverage is  $\sim 84 \text{ deg}^2$  (cf. Fig. 2): The main part of the survey, as described in Paper I, covers  $300^\circ \leq \ell \leq +18^\circ$ , with  $|b| \leq 0.5$  ( $78 \text{ deg}^2$ ). Because additional observing time was available for this project in 2016 and 2017, we were able to slightly increase the survey coverage. We have extended the coverage in latitude to  $|b| \leq 1^\circ$  around the Galactic Centre ( $358^\circ \leq \ell \leq +1.5$ ) and mapped a  $2\text{-deg}^2$  region covering the extreme star-forming region W43 ( $+29^\circ \leq \ell \leq +31^\circ$ , with  $|b| \leq 0.5$ ). We have also increased the latitude coverage up to  $+0.75$  at  $\ell = 348^\circ$  to cover RCW 120, and down to  $-0.75$  for  $338^\circ \leq \ell \leq 339^\circ$  to improve the coverage of the Nessie giant filament (Jackson et al. 2010). The data taken towards W43 allow for a comparison with existing surveys in the Northern hemisphere, such as the HERO survey performed with the IRAM 30-m telescope in the same spectral lines (Carlhoff et al. 2013). Here we present all the data that have been taken with APEX for this survey between 2013 and 2017.

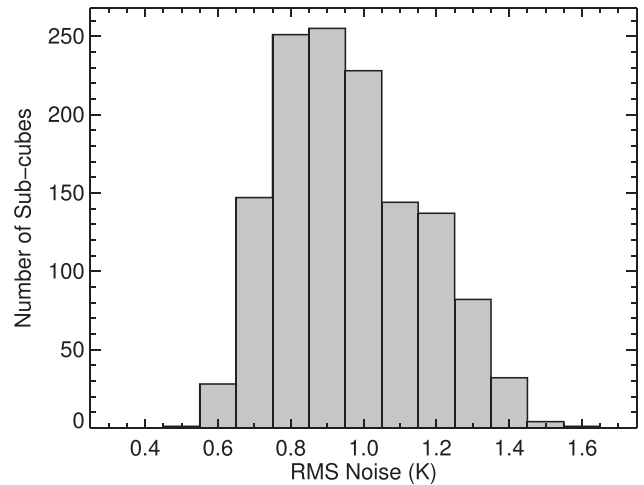
## 2.2 Data reduction

The data provided by the APEX telescope consist of spectra calibrated in antenna temperature scale ( $T_A^*$ ), written in files readable by the CLASS software from the GILDAS package.<sup>2</sup> We have developed a dedicated pipeline in GILDAS/CLASS, which consists of standard data reduction steps, such as conversion to  $T_{\text{mb}}$  scale (i.e.  $T_{\text{mb}} = T_A^*/\eta_{\text{mb}}$ ), spectral resampling, removing a spectral baseline, and gridding the spectra on to a data cube. In particular, a critical step consists in an automatic detection of emission features in order to define the windows to be masked when subtracting baselines; this is described in detail in Paper I.

As previously mentioned, in some cases, the initial off-position was found to contain emission that would contaminate our maps and so these were checked against a more distant position,  $1^\circ$  further away perpendicular to the Galactic plane, and reduced independently. Emission in the reference position appears as an absorption feature that is constant over the extent of a given map. When coinciding with the velocity range of real emission in the map, it leads to underestimating the gas column density, and could also impact the observed velocity pattern of the emission. Where the reference position has been found to show emission, we corrected for this by adding the spectrum measured for the reference position to each spectrum in the map. This operation is illustrated in Fig. A1 in Appendix A. Since the rms noise measured on these spectra was typically around  $0.07 \text{ K}$  (see Table A1), this operation does not significantly increase the noise in the map data.

The pipeline used for the current First Data Release (DR1) is, therefore, almost identical to the procedure described in Paper I. However, an additional, non-standard data processing step was necessary; we noticed that when an on-the-fly map and the corresponding reference position were observed on different days, the Doppler corrections applied to the reference position and to the map data could differ by up to three velocity channels ( $0.75 \text{ km s}^{-1}$ ). Therefore, to properly account for the absorption feature in the spectra where necessary, we computed this difference between the Doppler corrections computed for the map centre and for the reference position observed at a different time. After shifting the observation of the reference spectrum accordingly, we then added the modified reference spectrum to each position of the map. This step was only necessary where the reference position has been found to show significant emission (see Table A1 for details).

<sup>2</sup><http://www.iram.fr/IRAMFR/GILDAS/>.



**Figure 3.** Distribution of the median values of the rms noise in  $0.25 \times 0.25 \text{ deg}^2$  subcubes, shown in  $0.1 \text{ K}$  ( $T_{\text{mb}}$ ) bins. The mean and median values are both approximately  $0.95 \text{ K}$ .

## 2.3 Data quality

The output of the pipeline is a set of data cubes calibrated to the  $T_{\text{mb}}$  scale, centred on the most relevant spectral lines possibly detected in the band-pass, and projected on  $9.5 \text{ arcsec}$  pixels. The velocity resolution in the final cubes is  $0.25 \text{ km s}^{-1}$  for the  $^{13}\text{CO}(2-1)$  and  $\text{C}^{18}\text{O}(2-1)$  lines, and  $0.5 \text{ km s}^{-1}$  for all the other transitions:  $\text{H}_2\text{CO}(3_{0,3}-2_{0,2})$  and  $(3_{2,1}-2_{2,0})$ ,  $\text{HC}_3\text{N}(24-23)$ ,  $\text{SO}(6_5-5_4)$ ,  $\text{SiO}(5-4)$ ,  $\text{HNCO}(10_{0,10}-9_{0,9})$ , and  $\text{CH}_3\text{OH}(4_{2,0}-3_{1,0})$ .

Due to variations in weather conditions, the elevation of the telescope during observations, and the performance of the instrument, the local noise level  $\sigma_{\text{rms}}$  varies slightly over the survey area, as illustrated in Fig. 2. For each pixel in each  $^{13}\text{CO}(2-1)$  data cube,  $\sigma_{\text{rms}}$  is computed as the standard deviation of the signal in the first 50 spectral channels (i.e.  $-200 < v_{\text{lsr}} < -187.5 \text{ km s}^{-1}$ ), as this part of the velocity range is almost always devoid of emission, except possibly for some small regions near the Galactic Centre. In Fig. 3, we show the distribution of the median noise values for all of the individual  $0.25 \times 0.25$  subcubes, which shows that the range of noise values is between  $0.5$  and  $1.6 \text{ K}$  ( $T_{\text{mb}}$ ), with most fields (61 per cent) showing a noise below  $1.0 \text{ K}$ ; the median and mean values are  $0.94$  and  $0.96 \text{ K}$ , respectively. While the sensitivity achieved is sufficient to map the distribution of the relatively bright  $^{13}\text{CO}(2-1)$  line emission, we are only able to detect  $\text{C}^{18}\text{O}(2-1)$  towards the densest regions. Transitions from other species are likely to be detected only towards the brightest and most compact dense cores.

Another issue worth highlighting is that subtracting baselines in regions with bright, broad emission lines is known to be very arduous and error-prone, particularly when the baseline exhibits variations over a velocity range comparable to the line width. The central region of the Galaxy is clearly the most extreme case in that respect, and the data for this region should be used with particular caution. In addition, there are a few other regions that are affected by baseline ripples and absorption features that we have not been able to fully remove by adding the spectrum of the corresponding reference position. We identify these regions in Table 3 and recommend extreme caution when using data for these fields. However, this issue only emerges when averaging spectra over large regions; correction from the reference position to the individual

**Table 3.** Fields with issues.

Field	Comments
304.25–0.25	Baseline ripples
332.25+0.25	Absorption feature at $-23 \text{ km s}^{-1}$ from the reference position
332.75+0.25	Absorption features at $-23 \text{ km s}^{-1}$ and $-31 \text{ km s}^{-1}$ from the reference position
336.25–0.25	Absorption feature at $-20 \text{ km s}^{-1}$ from the reference position
352.25+0.25	Absorption feature at $-6 \text{ km s}^{-1}$ from the reference position

spectra does not show such artefacts. Finally, the  $\text{C}^{18}\text{O}(2-1)$  data show a spike at  $v_{\text{LSR}} \sim -48 \text{ km s}^{-1}$ , which appears in a single channel with a varying intensity over all fields. We have removed this spike from the individual spectra using a  $\sigma$ -clipping method; however, an artefact may still show up when averaging the spectra over large areas.

In order to check the consistency of our calibration and the data quality, we have compared the SEDIGISM data for the W43 complex with the W43-HERO survey (Carlhoff et al. 2013), which covered a good fraction of the 2-deg<sup>2</sup> field centred at  $\ell = 30^\circ$  in the same transitions as SEDIGISM,  $^{13}\text{CO}(2-1)$ , and  $\text{C}^{18}\text{O}(2-1)$ , with the IRAM 30-m telescope. The results from this comparison show no systematic differences between the two data sets for the  $^{13}\text{CO}(2-1)$  line and indicate that the calibration is consistent between the two surveys, although the distribution of the  $^{13}\text{CO}$  emission reveals some minor differences towards the brightest areas. Since the  $\text{C}^{18}\text{O}$  SEDIGISM data are only tracing the most compact, dense clumps but is not sensitive to the more diffuse, extended material, no statistical comparison is possible (see Appendix B for more details).

## 2.4 Public data release

The reduced data, processed with the current version of the dedicated pipeline, is now available to the community. This first public data release (DR1) consists of 78 cubes in  $^{13}\text{CO}(2-1)$  and 78 cubes in  $\text{C}^{18}\text{O}(2-1)$ , where each cube covers  $2^\circ$  in longitude over  $\pm 0.5^\circ$  in latitude (or more in the few regions with extended  $b$  coverage, see Section 2.1). Cubes are separated by  $1^\circ$  in longitude, providing  $1^\circ$  overlap between adjacent cubes. The pixel size is 9.5 arcsec, the velocity resolution is  $0.25 \text{ km s}^{-1}$ , and the velocity range covers  $-200$  to  $+200 \text{ km s}^{-1}$ . The DR1 data can be downloaded from a server hosted at the MPIfR in Bonn (Germany).<sup>3</sup>

The 4 GHz of instantaneous bandwidth of the spectral tuning used to observe SEDIGISM includes several transitions from other molecules (see table 1 in Paper I). In particular, six lines are detected when spatially averaging the data corresponding to the brightest emission regions in  $^{13}\text{CO}(2-1)$ ; this will be discussed in more detail in Section 5. Therefore, we also provide data cubes covering these transitions as part of the DR1, where the spectra have been smoothed to  $0.5 \text{ km s}^{-1}$  velocity resolution in order to increase the signal-to-noise ratio ( $S/N$ ). The velocity range also covers from  $-200$  to  $+200 \text{ km s}^{-1}$  for all lines, except for the SiO (5–4) transition, which is located near the edge of the spectral setup so that only the  $-200$  to  $+150 \text{ km s}^{-1}$  velocity range is available.

We have extracted  $\sim 11\,000$  molecular clouds and complexes from the  $^{13}\text{CO}(2-1)$  data from this data release, using the Spectral Clus-

tering for Interstellar Molecular Emission Segmentation (SCIMES; Colombo et al. 2015) algorithm; the results are presented in Paper IIIhttp. The catalogue with the distance estimates and the derived physical properties for all clouds, as derived in Paper III, as well as the masks representing these clouds in the  $^{13}\text{CO}(2-1)$  cubes are also made publicly available alongside the main data release we present here.

Some work is still ongoing aimed at improving the data quality and at solving known issues, such as artefacts for some transitions or a proper estimate of the baselines in regions with complex, extended emission. We plan to provide data cubes with improved quality as part of future data releases.

## 3 GLOBAL DISTRIBUTION OF MOLECULAR GAS

In this section, we use the  $^{13}\text{CO}(2-1)$  and  $\text{C}^{18}\text{O}(2-1)$  data to constrain the Galactic structure on the largest scale. Some peculiar regions will be discussed in more detail in Section 4, while compact objects and individual molecular clouds are the topic of subsequent papers.

### 3.1 Integrated emission

We show maps of the  $^{13}\text{CO}$  emission integrated over the  $\pm 200 \text{ km s}^{-1}$  velocity range for the full survey in Fig. 4. These maps reveal that the emission from molecular gas is extended over much of the inner part of the survey region ( $330^\circ < \ell < 15^\circ$ ) but becomes much more patchy at larger angular distances from the Galactic Centre. The brightest emission is associated with the CMZ (Morris & Serabyn 1996), which extends over  $|\ell| \leq 1.5^\circ$  or a radius of  $\sim 200 \text{ pc}$ . Outside of the Galactic Centre, the brightest emission is concentrated in distinct regions, all associated with prominent star-forming regions.

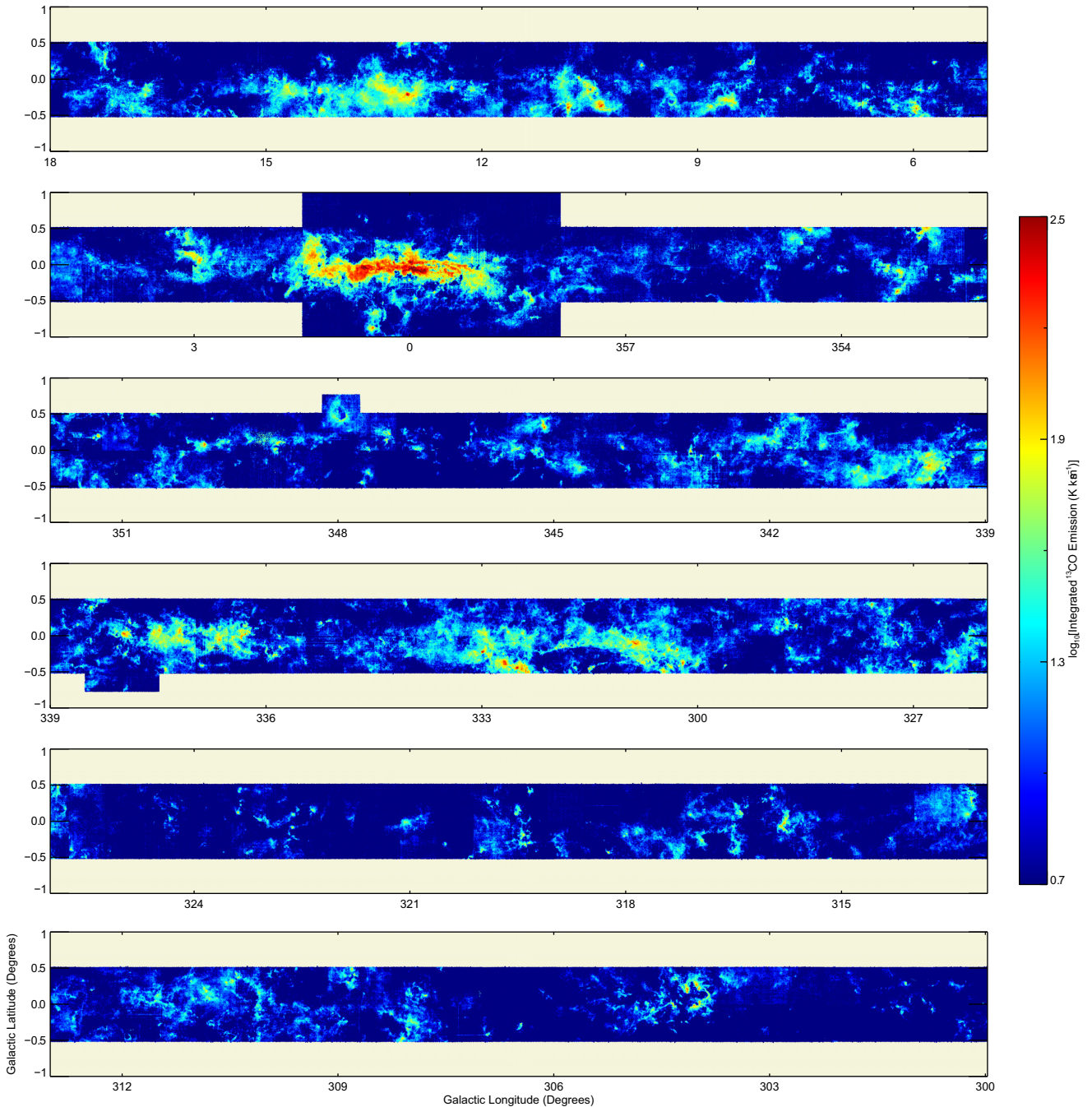
Our latitude coverage is rather narrow: only  $\pm 0.5^\circ$  in most directions. By comparing with other surveys with larger latitude coverage like ThrUMMS or ATLASGAL, it is clear that we miss a number of molecular clouds and complexes, especially the nearby ones (see also Alves et al. 2020, regarding nearby clouds in the outer Galaxy). Also a few known complexes up to  $\sim 3 \text{ kpc}$  are not included, e.g. NGC 6334 and NGC 6357. Another exception is for gas lying towards the longitude range of  $300^\circ < \ell < 318^\circ$ , and a Galactocentric distance of 8 kpc and beyond, where the Galactic plane descends below a latitude of  $b < -0.5^\circ$  due to the Galactic warp (e.g. Chen et al. 2019; Romero-Gómez et al. 2019), making this area of the Galaxy not well covered by our survey. However, the area covered by SEDIGISM still encompasses the vast majority of the molecular gas in the inner Galaxy; Rigby et al. (2016) also concluded from a comparison of the CHIMPS data (with the same latitude coverage as SEDIGISM) with the GRS survey ( $|b| < 1^\circ$ ) that the molecular line emission drops off quickly with distance from the mid-plane.

### 3.2 Longitude–velocity distribution

#### 3.2.1 A four-spiral-arm model

To facilitate the discussion that follows concerning the distribution of molecular material in the Milky Way, Fig. 5 presents a schematic plot of the Galaxy as seen from the northern Galactic pole that includes the spiral arms and the Galactic bar. We have chosen to use the spiral arm loci derived by Taylor & Cordes (1993) and updated

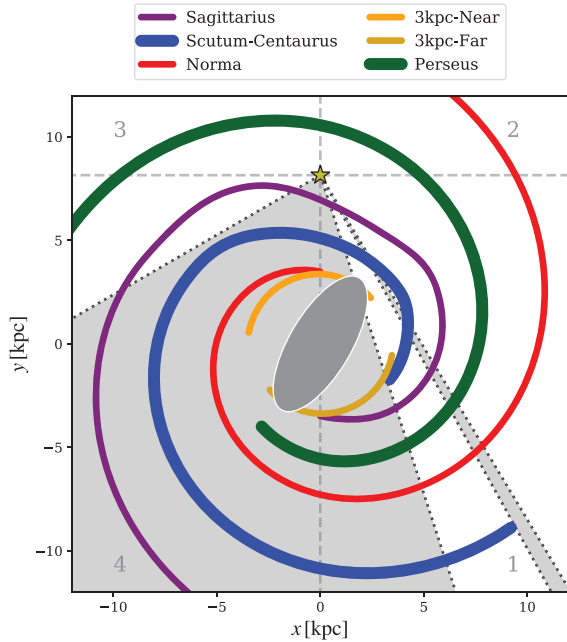
<sup>3</sup><https://sedigism.mpifr-bonn.mpg.de>.



**Figure 4.** Integrated emission maps for the full survey (except for W43), showing the  $^{13}\text{CO}(2-1)$  spectral cubes integrated over the full  $\pm 200 \text{ km s}^{-1}$  range of the data.

by Cordes (2004) as these have been determined independently of the distribution of molecular gas unlike the loci used in the recent work by Reid et al. (2019), which have been fitted by-hand to the  $^{12}\text{CO}(1-0)$   $l v$  map of Dame et al. (2001). Moreover, the model from Reid et al. (2019) is poorly constrained in the fourth quadrant due to a lack of reliable maser parallax distances. A single galactic bar is shown for illustrative purposes, with orientation and length scales in line with contemporary measurements (Bland-Hawthorn & Gerhard 2016). The near and far 3-kpc arms are not included in the Cordes (2004) model and have been added in as small, twofold

symmetrical arm segments (Dame & Thaddeus 2008) with pitch angles of  $1:5$  expanding radially at a velocity of  $55 \text{ km s}^{-1}$ , with the near 3-kpc arm aligning with the arm segment from Bronfman et al. (2000) (the exact nature of these features is still somewhat unknown; see Green et al. 2011). There is some evidence that the far 3-kpc arm is expanding slightly faster, but this is inconsequential for our analysis as there is effectively no emission seen in this region in the SEDIGISM data, due to the limited sensitivity. Fig. 5 shows that the SEDIGISM survey (indicated by the grey shading) covers large parts of three of the main spiral arms (Norma, Sagittarius, and Scutum-



**Figure 5.** Schematic showing the loci of the spiral arms according to the model by Taylor & Cordes (1993) and updated by Cordes (2004), with an additional bisymmetric pair of arm segments added to represent the 3-kpc arms. The grey shaded areas indicate the regions covered by the SEDIGISM survey. The star shows the position of the Sun and the numbers identify the Galactic quadrants. The bar feature is merely illustrative and does not play a role in our analysis. The smaller slice in the first quadrant corresponds to the W43 region.

Centaurus arms), and almost all of the 3-kpc arms, thus allowing us to refine our understanding of the structure of the Galaxy.

### 3.2.2 SEDIGISM $\ell v$ maps

In the upper and middle panels of Fig. 6 we present a longitude-velocity map of the  $^{13}\text{CO}(2-1)$  and  $\text{C}^{18}\text{O}(2-1)$  transitions produced by integrating the emission between  $|b| < 0.5$ . Only voxels above a  $3\sigma_{\text{rms}}$  threshold were considered to produce this  $\ell v$  map, where the local noise  $\sigma_{\text{rms}}$  is estimated as discussed above (Section 2.3). While much of the complex emission seen in the  $\ell b$  map (Fig. 4) is the result of many giant molecular clouds being blended along our line of sight across the inner Galactic disc, we find that these clouds are well separated in velocity, making it easier to break down the emission into distinct molecular structures. It is clear from these maps that while the  $^{13}\text{CO}(2-1)$  is detected over a wide range of velocities, the  $\text{C}^{18}\text{O}(2-1)$  emission is much less extended and is likely to only be tracing dense clumps, which cannot be easily detected beyond a few kpc due to beam dilution. But even if the  $\text{C}^{18}\text{O}(2-1)$  is less useful for studies of large-scale structures, it is indispensable for detailed studies of the physical properties of dense structures such as filaments (Mattern et al. 2018) and clumps (Paper IV).

On the  $^{13}\text{CO}(2-1)$   $\ell v$  map shown in Fig. 6, we also overlay the spiral arm loci derived by Taylor & Cordes (1993) and Cordes (2004). The  $x$  and  $y$  positions given by Taylor and Cordes have been converted into  $\ell$  and  $v$  using a three-component rotation curve (bulge + disc + dark halo) tailored to the data of Eilers et al. (2019). The shape of the rotation curve towards the Galactic Centre is somewhat uncertain, and so we simply adopt a steeply rising bulge

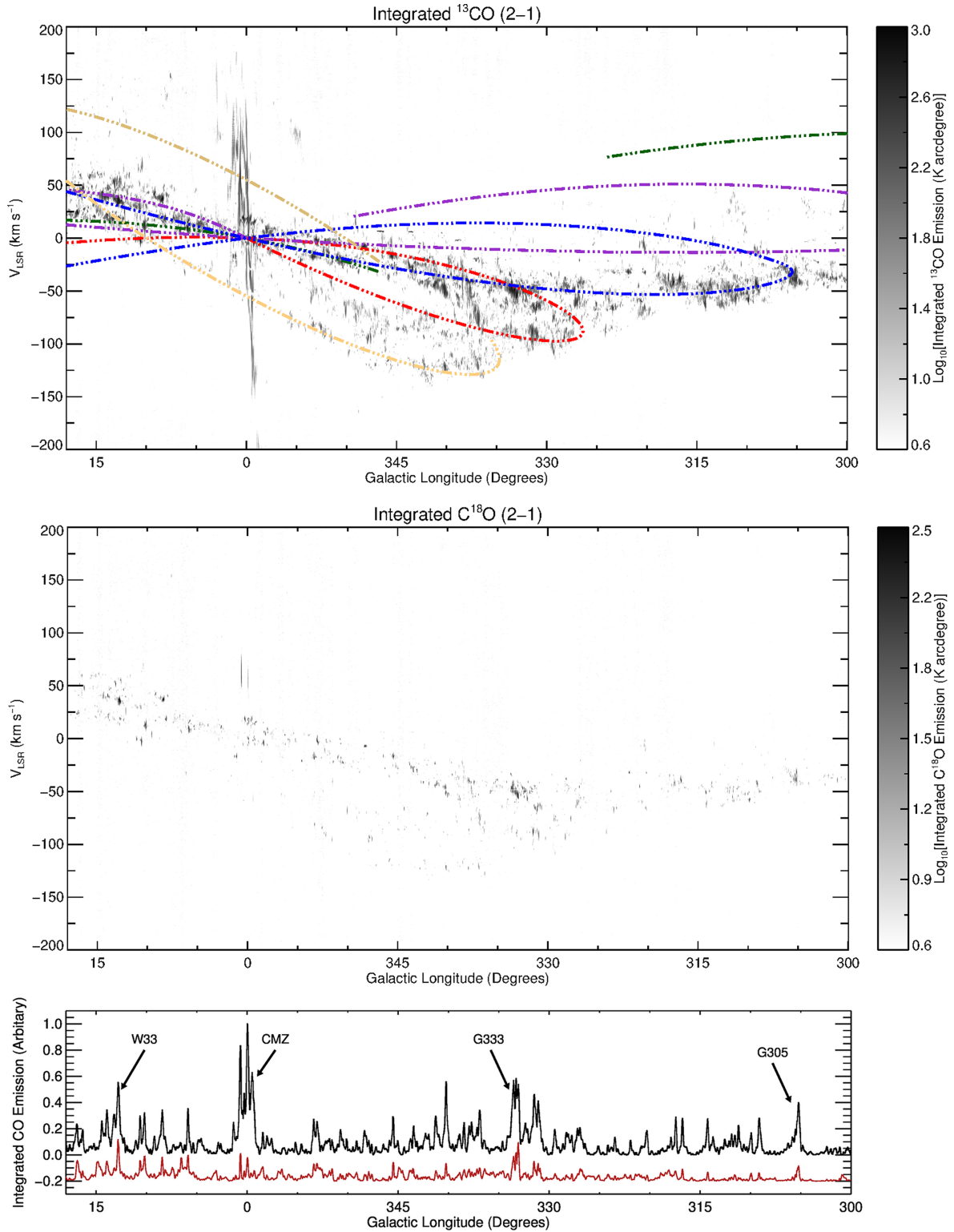
component matching that adopted in Eilers et al. (2019, fig. 3). The Reid et al. (2019) values for solar position and circular velocity at the orbit of the Sun, 8.15 kpc and  $236 \text{ km s}^{-1}$ , are used for projection into line-of-sight velocity, simply assuming pure circular rotation. Comparing the CO emission to the loci of the spiral arms, we find very good agreement outside the Galactic Centre region ( $|\ell| \leq 5^\circ$ ). The only significant region of emission that is not closely associated with a spiral arm is the CMZ, but this is known to have extreme non-circular velocities (this region is discussed in more detail in Section 4). We also note that the majority of the CO emission is located within the solar circle (i.e.  $v_{\text{lsr}} < 0$  for  $\ell > 300^\circ$  and  $v_{\text{lsr}} > 0$  for  $\ell > 0^\circ$ ) and so there is very little emission seen towards the far parts of the Perseus, Sagittarius, or Scutum-Centaurus arm. This is likely the result of the sensitivity limit of the survey and beam dilution, and this means that probably we are only able to detect the most massive clouds outside the solar circle on the far side of the Galaxy.

Our simple projection of arms into  $\ell v$  space assumes purely circular motions for the primary arms, thus will not perfectly align with structures like the Norma Arm in the inner galaxy (appearing to move towards us with a  $v_{\text{lsr}}$  of roughly  $-30 \text{ km s}^{-1}$ ; Sanna et al. 2014). The response of gas to spiral arms alone creates non-circular motions, forming some peculiar features towards the inner Galaxy seen in  $\ell v$  space (e.g. Gómez & Cox 2004; Pettitt et al. 2015). Our modern, *Gaia*-era understanding of the Galactic bar also suggests slower pattern speeds than assumed in earlier works, which place corotation as far out as 6 kpc (Bovy et al. 2019; Sanders, Smith & Evans 2019). The ISM responds strongly to the motion of the bar out to corotation, and even as far as the more distant Outer Lindblad Resonance for certain models of bars (Sormani, Binney & Magorrian 2015; Pettitt, Ragan & Smith 2020). Any spiral arm-like features are thus inherently coupled to the bar within at least corotation and more sophisticated modelling is required to fully understand the kinematics of the gas.

In the lower panel of Fig. 6, we show the total  $^{13}\text{CO}(2-1)$  and  $\text{C}^{18}\text{O}(2-1)$  emission as a function of Galactic longitude; the  $^{13}\text{CO}(2-1)$  emission profile reveals a number of significant peaks, the most prominent of which is associated with the Galactic Centre region. Many of the others are associated with well-known star-forming complexes such as W33, G333, and G305; these are located at  $\ell = 13^\circ, 333^\circ$ , and  $305^\circ$ , respectively. The integrated  $\text{C}^{18}\text{O}(2-1)$  emission also reveals peaks that are correlated with the same star-forming regions indicating these regions have either higher optical depth and column densities than elsewhere in the Galactic plane, or they contain enough gas at high temperature to produce strong emission in the  $J = 2-1$  lines.

Analysis of the dense gas traced by the ATLASGAL survey by Urquhart et al. (2018) has shown that approximately 50 per cent of the current star formation in the disc of the inner Galaxy is taking place in a relatively small number of very active regions ( $\sim 30$ ). Indeed nearly all of the peaks seen in the lower panel of Fig. 6 are associated with one of these regions (see also Urquhart et al. 2014a). If we define all emission above a value of 10 per cent of the highest peak value (at  $\ell \sim 0$ ) as being associated with a complex, we find that they are responsible for  $\sim 70$  per cent of all the emission. The  $^{13}\text{CO}$  emission traces the lower density diffuse gas in which the dense clumps are embedded and thus allow us to probe the structure, kinematics, and physical properties of these regions. This highlights the survey's ability to conduct detailed studies of the molecular gas associated with some of the most intense star formation regions in the Galaxy, and put them in a global setting with respect to the large-scale structural features of the Galaxy.





**Figure 6.** Galactic longitude–velocity distribution of the SEDIGISM survey in the range  $300^\circ < \ell < 18^\circ$ . The greyscale image shows the distribution of molecular gas as traced by the integrated  $^{13}\text{CO}(2-1)$  and  $\text{C}^{18}\text{O}(2-1)$  emission (upper and middle panels). To emphasize the weaker extended emission, we have used a log scale and have masked the emission below  $3\sigma$ . The intensity in  $T_{\text{mb}}$  scale has been integrated over the  $\pm 0.5$  range in Galactic latitude. The location of the spiral arms are shown as curved dot–dashed lines, coloured to identify the individual arms; colours are as shown in Fig. 5. For the  $\text{C}^{18}\text{O}(2-1)$  line, the values of a horizontal row of three pixels centred on  $-48.5 \text{ km s}^{-1}$  have been set to zero due to the presence of a spike that appears at this velocity when large areas are integrated together (for more details, see Section 2). Lower panel: integrated  $^{13}\text{CO}(2-1)$  and  $\text{C}^{18}\text{O}(2-1)$  intensity as a function of Galactic longitude (black and red, respectively). The intensities have been integrated over the  $\pm 200 \text{ km s}^{-1}$  in  $v_{\text{LSR}}$  and the  $\pm 0.5$  range in latitude for each longitude. The flux scale has been normalized to the peak intensity of the  $^{13}\text{CO}(2-1)$  emission. The  $\text{C}^{18}\text{O}(2-1)$  spectrum has been multiplied by 5 and an offset of  $-0.2$  has been applied to make the profile clearer.

In Fig. 7, we show channel maps towards W33, a large complex representative of high-mass star-forming regions in the Galactic disc. According to maser parallax measurements, this complex is located in the Scutum-Centaurus arm at a distance of 2.4 kpc (Immer et al. 2013). In the upper left-hand panel of this figure, we show the integrated emission over the entire velocity range where emission is detected (0–60 km s<sup>-1</sup>). Each of the subsequent panels shows a channel map where the emission has been integrated over 6 km s<sup>-1</sup> in velocity. These maps reveal that the <sup>13</sup>CO(2–1) emission seen towards this region consists of dense clumps, diffuse larger clouds, and numerous filamentary structures spread out over 60 km s<sup>-1</sup>. It is worth noting that there is a wealth of intricate features that emerge in individual channel maps, but that do not appear or are washed out in the integrated intensity map. This also implies that, even if most of the molecular gas is associated with a few major complexes as discussed above, there are plenty of other smaller features detected in the SEDIGISM data that are not associated with known complexes.

### 3.3 Correlation between molecular gas and spiral arms

The  $\ell v$  map presented in Fig. 6 clearly shows that the molecular gas is broadly correlated with the spiral arms. To properly map the distribution of the molecular gas across the disc requires determining distances, which is beyond the scope of this paper but is discussed in the accompanying paper by Duarte-Cabral et al. (Paper III). However, it is possible to examine the intensity distribution as a function of the Galactocentric distance. This is accomplished by calculating the kinematic distance for each pixel in the  $\ell v$  map above a  $3\sigma_{\text{rms}}$  threshold using the three-component rotation curve of Eilers et al. (2019) and the Reid et al. (2019) values for solar position and velocity, 8.15 kpc and 236 km s<sup>-1</sup> (as described in Section 3.2.2). Although this produces two distances for sources located within the solar circle (i.e. with a Galactocentric radius  $R_{\text{gc}} < 8.15$  kpc) equally spaced on either side of the tangent distance (referred to as the near and far distances), it provides a unique distance from the Galactic Centre, which, therefore, allows us to investigate the distribution of the integrated intensity as a function of Galactocentric distance. Given that the spiral structure is different in the first and fourth quadrants, and that the SEDIGISM survey has only covered a small portion of the first quadrant, we have restricted this analysis to the fourth quadrant. We have also excluded the Galactic Centre region ( $|\ell| < 10^\circ$ ) as kinematic distances are unreliable in this part of the Galaxy. Even outside this region, this approach cannot provide very accurate distances because of non-circular motions that deviate from the rotation curve, but it allows us to roughly estimate the fraction of molecular gas that is associated with the spiral arms.

In Fig. 8, we show the integrated <sup>13</sup>CO(2–1) intensity as a function of Galactocentric distance, normalized to the peak of the distribution. This plot shows that the emission from the molecular gas is highly structured with strong peaks seen at approximately 4.25, 5, 5.5, and 6.5 kpc; the first of these roughly corresponds to the tangent with the Norma arm, the second and third correspond to the far side of the long bar where it intersects with the Perseus arm (Bland-Hawthorn & Gerhard 2016), and the fourth with the tangent of the Scutum-Centaurus arm. The vast majority of the emission is contained between 4 and 7.5 kpc. The lack of emission below 2 kpc is due to the restricted longitude range selected for this analysis, while the lack of emission at distances greater than 8 kpc likely reflects the poor sensitivity to molecular material on the far side of the solar circle and beyond, where beam dilution certainly plays an important role. This thick emission zone is analogous to the thick ring of material seen in the first quadrant (often referred to as the 5-kpc molecular

ring), but as pointed out by Jackson et al. (2006), is likely to arise from a complicated combination of column density and velocity fields and may not actually represent a real ringlike structure (see also Dobbs & Burkert 2012). The highly structured nature of our <sup>13</sup>CO(2–1) emission further lends support for a four-arm model of the Galaxy (Urquhart et al. 2014a), which can nevertheless co-exist with a ringlike structure.

In order to quantify what fraction of the total emission is associated with the spiral arms, we have calculated the minimum offset from the arms for each pixel on the  $\ell v$  map above  $3\sigma_{\text{rms}}$ . In Fig. 9, we show the cumulative distribution of the integrated <sup>13</sup>CO(2–1) emission as a function of velocity offset from the spiral arm loci shown in the upper panel of Fig. 6. When performing the matching of the pixels with the spiral arms, we allowed for a variation of  $\pm 0.5$  in Galactic longitude as the spiral arm tangents are not well constrained. We consider pixels within  $\Delta v < 10$  km s<sup>-1</sup>, which is of the order of the amplitude of streaming motions around the spiral arms ( $\sim 7$ – $10$  km s<sup>-1</sup>; Burton 1971; Stark & Brand 1989; Reid et al. 2009), to be associated with a spiral arm. This plot reveals that approximately 60 per cent of the molecular emission is closely associated with a spiral arm. This proportion is a little lower than the value of 80 per cent derived by Urquhart et al. (2018) from a similar analysis of GRS clouds identified by Rathborne et al. (2009). However, as pointed out by Roman-Duval et al. (2009), only approximately two-thirds of the emission in the GRS was accounted for in the source extraction with diffuse emission below the detection threshold accounting for the rest. The strong correlation we have found between the <sup>13</sup>CO emission and the spiral arms is consistent with the findings of Roman-Duval et al. (2009) and Rigby et al. (2016). Nevertheless, this analysis also indicates that a significant amount of molecular gas (up to 40 per cent) is located in the inter-arm regions.

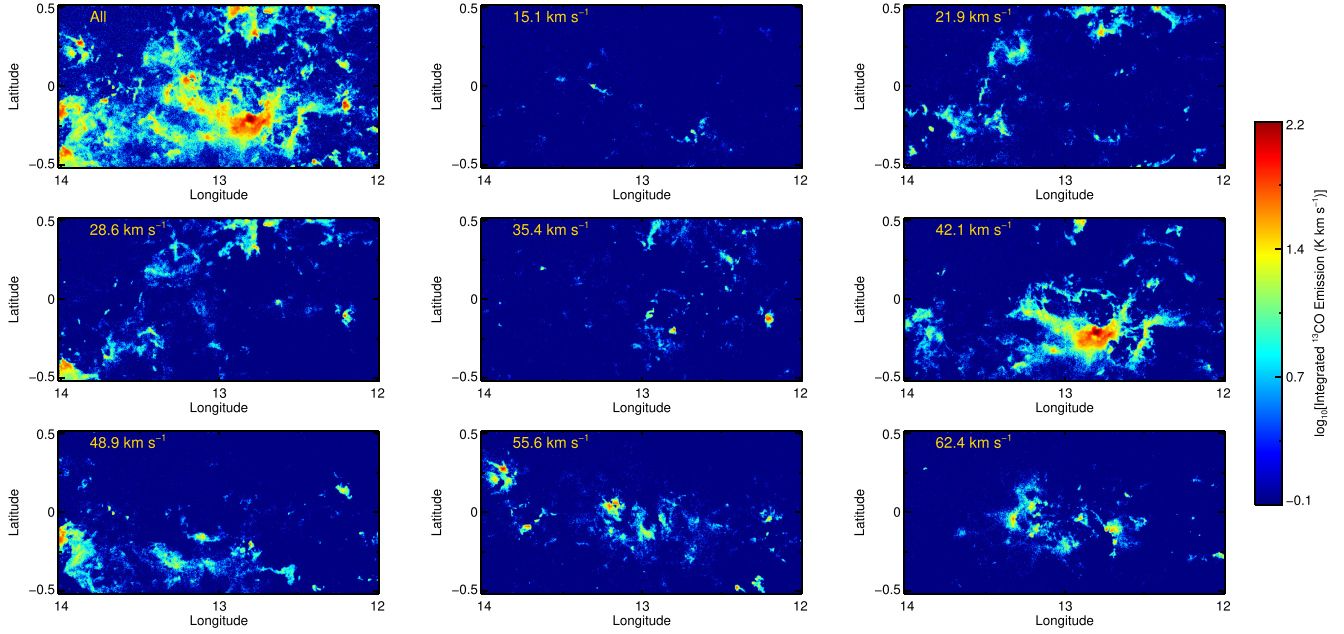
## 4 NOTEWORTHY REGIONS

Although it is clear that the majority of the <sup>13</sup>CO emission outside the CMZ is closely associated with the spiral arms, there are a number of interesting features seen in the  $\ell v$  map that are worth discussing in some detail.

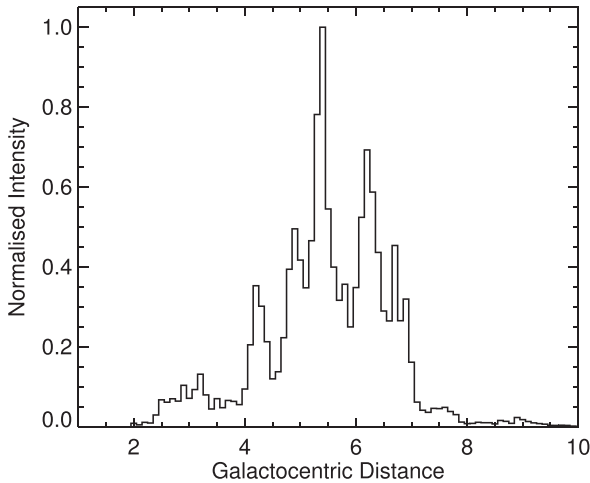
### 4.1 Galactic Centre

In Fig. 10, we show the  $\ell v$  map of the Galactic Centre region. The emission in this region can be separated into two distinct types: a narrow horizontal strip of emission centred around  $v_{\text{lsr}} = 0$  that stretches across the whole map, and a region of more complex emission in the range  $359^\circ < \ell < 2^\circ$  and velocities  $-150 < v_{\text{lsr}} < 150$  km s<sup>-1</sup>. The horizontal strip around  $v_{\text{lsr}} = 0$  is the result of foreground and background emission within the Galactic disc, while the CMZ itself is responsible for emission over a large range of  $v_{\text{lsr}}$ . The CMZ is a peculiar region of the inner Galaxy that includes a number of large molecular complexes such as Sagittarius A ( $\ell = 0$ ,  $v_{\text{lsr}} = 50$  km s<sup>-1</sup>), Sagittarius B ( $\ell = 0.6$ ,  $v_{\text{lsr}} = 50$  km s<sup>-1</sup>), Sagittarius C ( $\ell = 359.3$ ,  $v_{\text{lsr}} < 0$  km s<sup>-1</sup>), and Sagittarius D ( $\ell = 0.9$ ,  $v_{\text{lsr}} = 80$  km s<sup>-1</sup>), each covering more than 10 arcmin<sup>2</sup>; these molecular complexes are labelled in Fig. 10. This map nicely shows the complex kinematics in the Galactic Centre region, in particular the presence of non-circular motions and gas emission at forbidden velocities (negative for  $\ell > 0^\circ$  and positive for  $\ell < 0^\circ$ ; Riquelme et al. 2010 and references therein).

In addition to these two large-scale features, we can also see some finer scale detail such as the narrow absorption features at  $\ell = 359.5$  with  $v_{\text{lsr}} \simeq -50$  km s<sup>-1</sup>,  $-30$ , and  $0$  km s<sup>-1</sup>; these features are due

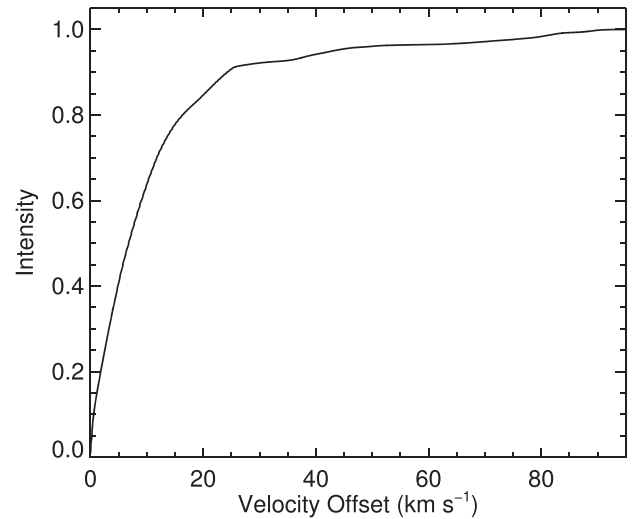


**Figure 7.** Channel maps of  $^{13}\text{CO}(2-1)$  of the  $\ell = 13^\circ$  cube, which includes the high-mass star-forming region W33. The upper left-hand panel shows the emission integrated over the full velocity range where emission is seen in this direction ( $0-60 \text{ km s}^{-1}$ ), while the other panels show the emission integrated over velocity intervals of  $\sim 6 \text{ km s}^{-1}$ . The central velocities over which the integration has been performed are given in the upper left-hand corners of each map. The emission in each map has been scaled to the brightest emission in each map.



**Figure 8.** Integrated  $^{13}\text{CO}(2-1)$  intensity as a function of Galactocentric distance. The emission has been integrated over intervals of 0.1 kpc and only includes longitudes in the range  $300^\circ < \ell < 350^\circ$ .

to absorption of the strong emission emanating from the hot gas in the CMZ by the colder foreground segments of the 3 kpc, Norma, and Sagittarius arms (previously observed in  $\text{HCO}^+$  and  $\text{HCN}$ ; e.g. Fukui et al. 1977, 1980; Linke, Stark & Frerking 1981; Riquelme et al. 2010). On this plot, we have also overlaid the loci of the 3-kpc arms. Comparing the molecular emission with the loci of the near 3-kpc arm (indicated by the lower dash-dotted yellow line shown in Fig. 10), we find good agreement with the absorption feature seen at  $\ell = 359.5$  and  $-50 \text{ km s}^{-1}$ , which we have already attributed to this arm. We also see some association with molecular emission along its length, although this emission is weak and rather sporadic. It is also

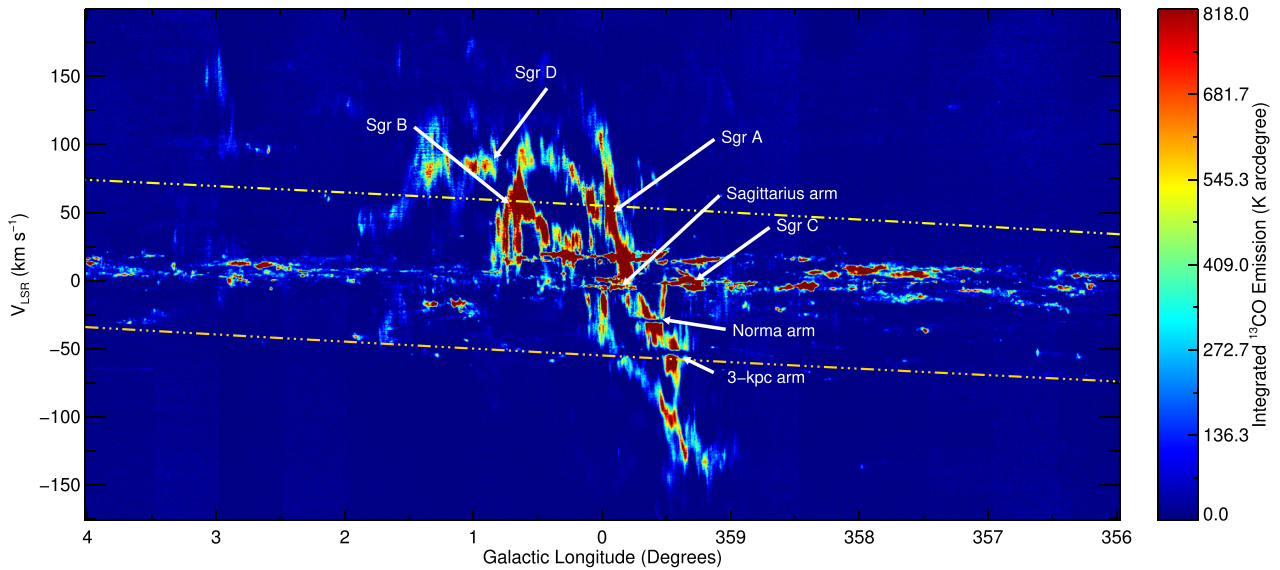


**Figure 9.** Cumulative integrated  $^{13}\text{CO}(2-1)$  intensity as a function of velocity offset from the nearest spiral arm for longitudes in the range  $300^\circ < \ell < 350^\circ$ . The velocity offsets have been calculated by finding the minimum velocity difference to a spiral arm for each pixel in the  $\ell v$  map with a flux above  $3\sigma$ .

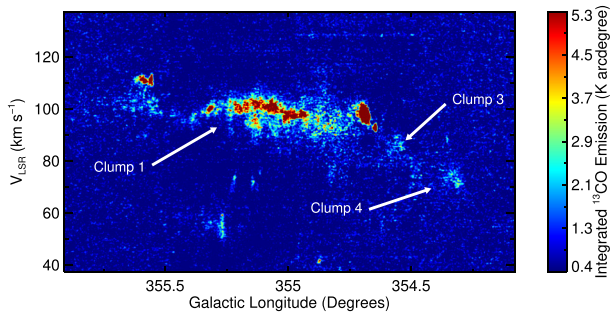
interesting to note the velocity of the absorption feature associated with the Norma arm ( $\sim -30 \text{ km s}^{-1}$ ), while the model loci of this arm pass very close to  $v_{\text{lsr}} = 0$  at this longitude.

#### 4.2 Bania molecular clouds

In Fig. 11, we show the Bania complex of molecular clouds (Bania 1977; Bania, Stark & Heiligman 1986), which consist of three large (40–100 pc) distinct molecular complexes located in a narrow



**Figure 10.** Longitude–velocity map of the Galactic Centre region. The lower and upper yellow dash–dotted lines show the loci of the near and far 3-kpc arms, respectively (see the text for details). On this map, we label some of the more significant molecular clouds and absorption features that have been attributed to foreground spiral arms; some of these are discussed in the text.



**Figure 11.** Longitude–velocity map of the Bania Clouds. The features described in the text are labelled following the nomenclature used by Bania (1977).

longitude range close to the Galactic Centre ( $\ell$  between  $354^{\circ}5$  and  $355^{\circ}5$ ) with  $v_{\text{LSR}}$  velocities of  $68$ ,  $85$ , and  $100 \text{ km s}^{-1}$ . Adopting the nomenclature from the original papers, these are known as Clump 4, Clump 3, and Clump 1, as labelled in Fig. 11 (the reference Clump 2 was given to another object located at  $\ell \simeq 3^{\circ}$ ). This region is unusual in that it is associated with velocities that are forbidden by Galactic rotation models. Even if this complex was located outside the solar circle on the far side of the Galaxy at a distance of  $40 \text{ kpc}$ , the maximum velocity that we would expect in this direction would be  $\sim 16 \text{ km s}^{-1}$  (Burton & Gordon 1978).

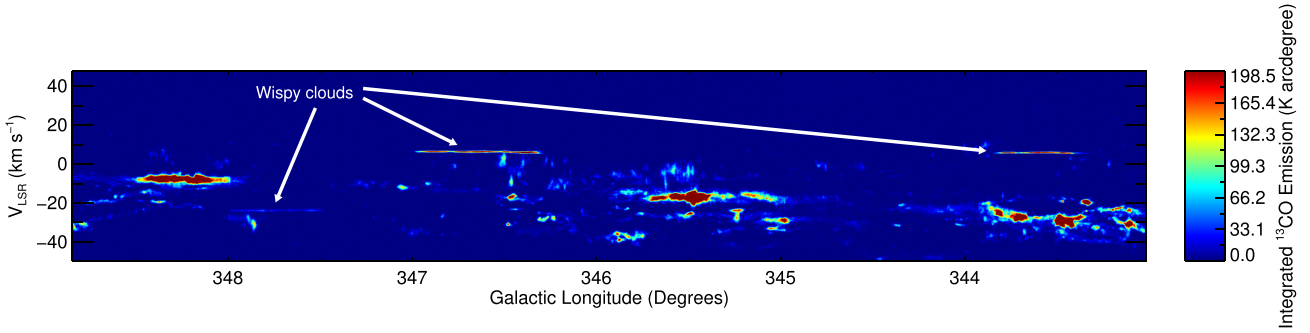
These clouds were originally mapped in  $^{12}\text{CO}(1-0)$  where all of the clouds were detected with good S/N (Bania 1980, 1986). However, in the less abundant  $^{13}\text{CO}(2-1)$  tracer, Clump 3 and Clump 4 are only weakly detected. Clump 1 is much brighter and appears to be elongated, extending over  $1^{\circ}$  in longitude. This cloud is also the only one of the three that is associated with an H II region (G354.67+0.25; Caswell & Haynes 1982), which is located at the western edge of the cloud.

Bania (1986) suggested that this complex could be associated with a feature that he refers to as the  $135 \text{ km s}^{-1}$  arm, which can be reproduced by a Galactocentric ring of material with a radius of  $3 \text{ kpc}$  rotating at a velocity of  $222 \text{ km s}^{-1}$  and expanding from the Galactic Centre at a speed of  $135 \text{ km s}^{-1}$ . Clump 1 is located at the southern terminus of this structure, at a distance of  $11.4 \text{ kpc}$ . This large-scale structure is not seen in our  $\ell v$  map but is clearly seen in the  $\ell v$  map of Dame et al. (2001) (see fig. 2 from Jones et al. 2013). However, the nature of this  $135 \text{ km s}^{-1}$  arm is contentious (see discussion by Jones et al. 2013) and it is not clear if Clump 1 is part of this structure or is entering the dust lane (Liszt & Burton 1980). Modern simulation efforts often attribute these features to stem from gas approaching the far end of the bar, about to begin the journey back towards the Galactic Centre (Baba, Saitoh & Wada 2010; Li et al. 2016b; Sormani et al. 2018).

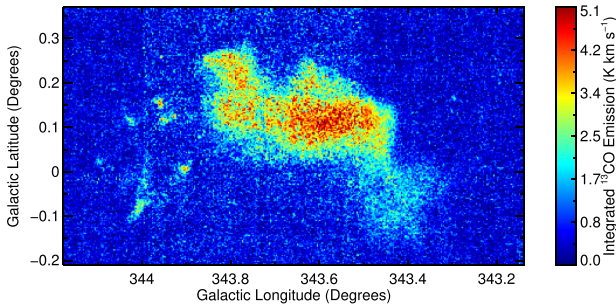
### 4.3 Population of nearby wispy clouds

Examination of the  $\ell v$  map has revealed the existence of a population of unusual clouds. These appear as very narrow horizontal lines in the  $\ell v$  map (see Fig. 12 for some examples), so much so that we initially thought them to be artificial, perhaps caused by spikes in the spectrometers or due to artefacts introduced during the data reduction procedure. However, on closer examination, these were found to be extended over large areas ( $\sim 0.5-1^{\circ}$  in diameter) and to have morphologies typical of molecular clouds (see Fig. 13 for an example of their structure).

These clouds have three primary characteristics: they are large in size, they have very narrow line widths (FWHM  $\sim 0.5-1 \text{ km s}^{-1}$ ), and they tend to have velocities close to the solar one (i.e.  $v_{\text{LSR}}$  close to zero). In Table 4, we summarize the positions and velocities for seven of these clouds clearly seen in the  $\ell v$  map. Their velocities and large angular sizes would suggest that the majority of these are local clouds. However, we note that one (Cloud 2) has a velocity that would place it at a larger distance. Given their narrow line widths, it is possible that these types of clouds have been missed in



**Figure 12.** This map is a zoom of a region of the  $^{13}\text{CO}(2-1)$   $\ell v$  map presented in Fig. 6, which contains three elongated clouds that have very narrow line widths [full width at half-maximum (FWHM)  $\sim 0.5\text{--}0.75$   $\text{km s}^{-1}$ ]. We have classified them as wispy clouds.



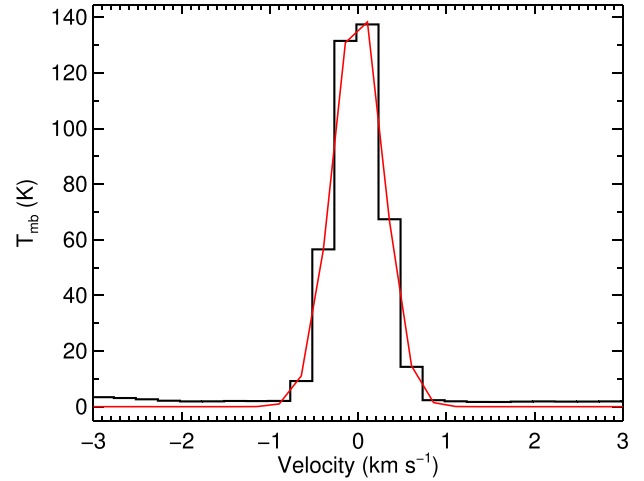
**Figure 13.**  $^{13}\text{CO}(2-1)$  emission integrated over the line width for Cloud 4 (see Table 4 for more details).

**Table 4.** Measured properties of the diffuse clouds.

Cloud id.	$\ell_{\min}$ ( $^{\circ}$ )	$\ell_{\max}$ ( $^{\circ}$ )	$v_{\text{LSR}}$ ( $\text{km s}^{-1}$ )	FWHM ( $\text{km s}^{-1}$ )
1	351.0	351.6	6.0	0.65
2	347.5	348.0	$-23.75$	0.98
3	346.3	347.0	6.75	0.75
4	343.4	343.8	5.25	0.66
5	342.2	342.4	5.25	0.61
6	340.4	340.6	5.5	0.71
7	338.6	339.2	$-1.5$	0.96

previous surveys where the velocity resolutions were  $>0.5$   $\text{km s}^{-1}$  as they would only be one or two velocity channels wide and discarded as artefacts. It would therefore be interesting to investigate these objects in more detail; however, their near proximity to the Sun makes kinematic distances unreliable and, without these, determining physical properties is not possible.

Typical molecular clouds have FWHM line widths of a few  $\text{km s}^{-1}$  (e.g. Paper III) and given that the thermal contribution is of the order of  $0.3$   $\text{km s}^{-1}$  (assuming a temperature of  $10\text{--}20$  K) most of the motion in these clouds is non-thermal in nature, and often attributed to turbulence. The clouds identified in this section are unusual in that their line widths are much narrower than typically found for molecular clouds, and, therefore, the thermal and non-thermal components appear roughly balanced. In Fig. 14, we show an example of line width for Cloud 4; this has been produced by integrating the emission seen in the  $\ell v$  map in longitude (i.e. along its length). Given that the non-thermal energy can work to support clouds against gravitational collapse, such low values could indicate



**Figure 14.**  $^{13}\text{CO}(2-1)$  emission integrated along the length of Cloud 4 located at  $\ell = 343^{\circ}6$  and  $v_{\text{LSR}} = 5.25$   $\text{km s}^{-1}$ . The black line shows the integrated emission, which has been centred on the  $v_{\text{LSR}}$  of the source, while the red line shows the result of a Gaussian fit to the profile (FWHM  $0.66$   $\text{km s}^{-1}$ ; see Table 4).

that these clouds would be potentially unstable to collapse, if they were associated with sufficient mass. In the absence of a robust distance estimate, we cannot determine the masses of the clouds, and thus are limited in our ability to make any further analysis on the nature of these clouds. Nevertheless, the fact that these are not seen in the  $\text{C}^{18}\text{O}$  data suggests that they either have low excitation temperatures or low column densities and are, therefore, rather diffuse and perhaps transient.

We note that the most striking of these clouds are located in the fourth quadrant. This potentially highlights a subtle difference between the distribution of molecular gas in the first and fourth quadrants in that there is very little material with a  $v_{\text{LSR}}$  close to zero in the first quadrant, and thus fewer local molecular clouds in the portion of the first quadrant mapped by SEDIGISM than in the fourth quadrant. Interestingly, similar clouds with narrow line widths can also be seen in the  $^{13}\text{CO}(3-2)$   $\ell v$  map of CHIMPS (Rigby et al. 2016, fig. 6), for instance a chain of clouds running from  $+10$  to  $+15$   $\text{km s}^{-1}$  in  $v_{\text{LSR}}$  over the  $32^{\circ}5 \leq \ell \leq 35^{\circ}5$  longitude range.

## 5 OTHER MOLECULAR TRANSITIONS

As previously mentioned (Section 2.1), transitions from several other molecules are included in the spectral tuning used by SEDIGISM, and the data cubes are also publicly available as part of the current data release. This includes spectral cubes for  $\text{H}_2\text{CO}(3_{0,3}-2_{0,2})$  and  $(3_{2,1}-2_{2,0})$ ,  $\text{HC}_3\text{N}(24-23)$ ,  $\text{SO}(6_5-5_4)$ ,  $\text{SiO}(5-4)$ , and  $\text{HNCO}(10_{0,10}-9_{0,9})$ , with  $0.5 \text{ km s}^{-1}$  velocity resolution. These transitions have lower state energies between 10 and 340 K (cf. table 1 in Paper I), and thus probe a wide range of physical conditions. In particular, spectral lines from formaldehyde ( $\text{H}_2\text{CO}$ ), SO, and cyanoacetylene ( $\text{HC}_3\text{N}$ ) are commonly detected toward high-mass star-forming regions (e.g. Sutton et al. 1985; Belloche et al. 2013; Tang et al. 2018; Duronea et al. 2019).

These lines are much weaker than the  $^{13}\text{CO}(2-1)$  and  $\text{C}^{18}\text{O}(2-1)$  lines discussed so far and are likely only detected towards the densest regions. To explore the utility of these additional lines in our survey, we have searched for the possible detection of these molecules in the  $2^\circ \times 1^\circ$  field centred at  $334^\circ$ , which is neither too crowded nor too empty and, as such, representative of the full survey data. Within this field, there are only two positions where non-CO lines are detected: toward the ATLASGAL massive dense clumps AGAL G333.604–00.212 and AGAL G333.134–00.431 (Contreras et al. 2013), associated with the the G333 star-forming complex. Towards these two positions, which are also the brightest in  $^{13}\text{CO}(2-1)$  and  $\text{C}^{18}\text{O}(2-1)$  in this field, we detect  $\text{H}_2\text{CO}(3_{0,3}-2_{0,2})$  and  $(3_{2,1}-2_{2,0})$ ,  $\text{HC}_3\text{N}(24-23)$ , and  $\text{SO}(6_5-5_4)$  with peak brightness temperatures of 1–3 K. However, some other, often prominent lines, such as  $\text{SiO}(5-4)$  and  $\text{HNCO}(10_{0,10}-9_{0,9})$ , are not detected.

In order to improve our sensitivity to weaker emission, we have also performed a stacking analysis to search for emission from other species using SPECTRAL-CUBE.<sup>4</sup> We analysed the S/N in the extracted lines versus intensity threshold in the  $^{13}\text{CO}(2-1)$  line in steps of 5 K, and we found that most detected lines peaked at a threshold of 30 K. Then, we selected all voxels within the  $^{13}\text{CO}(2-1)$  cube covering the G334 field where the  $^{13}\text{CO}(2-1)$  brightness was above a set threshold of 30 K. For each pixel in those regions, we used the first moment map to select the peak velocity. The weak line spectra (i.e.  $\text{HNCO}$  and  $\text{SiO}$ ) corresponding to these positions were then shifted by the  $^{13}\text{CO}(2-1)$  velocity and averaged, such that any signal is expected to have velocity offset close to zero. In Fig. 15, we show the results of our stacking analysis, which reveals that we have indeed detected a weak feature in the  $\text{HNCO}(10-9)$  line at  $5\sigma$  in integrated intensity. We have also detected a stronger feature in the  $\text{SiO}$  transition ( $\sim 8\sigma$ ), but this feature is not peaked at  $0 \text{ km s}^{-1}$  and is much broader; since high-excitation  $\text{SiO}$  primarily traces outflows, this broad, offset feature may represent the average of several outflow features over the G334 field.

Using this approach, we can also increase the S/N of the detection of the more prominent species (e.g. SO,  $\text{H}_2\text{CO}$ , and  $\text{HC}_3\text{N}$ ; see Fig. 15). The success of this semiblind stacking approach suggests that detailed studies of Galactic-scale cloud chemistry will be possible despite the survey’s relatively short integration times per position.

Finally, we want to highlight that the most extreme star-forming regions of our Galaxy exhibit extended emission in several of these weaker lines. We illustrate this in Fig. 16, where we show an example of the integrated intensity maps of all lines towards a region around Sgr B2, one of the most active star-forming sites in our Galaxy,

located close to the Galactic Centre (see Fig. 10 for location), where we detect extended emission in the  $\text{SO}(5-4)$ ,  $\text{SiO}(5-4)$ ,  $\text{HNCO}(10_{0,10}-9_{0,9})$ ,  $\text{CH}_3\text{OH}(4_{2,0}-3_{1,0})$ , and the  $\text{H}_2\text{CO} 3_{0,3}-2_{0,2}$  lines.

## 6 PERSPECTIVES AND CONCLUSIONS

Here we have presented the first public data release of the SEDIGISM survey, which covers  $84 \text{ deg}^2$  of the inner Galactic plane in  $^{13}\text{CO}(2-1)$  and  $\text{C}^{18}\text{O}(2-1)$ , at 30-arcsec angular resolution and a typical noise level of order 1 K ( $T_{\text{mb}}$ ) at  $0.25 \text{ km s}^{-1}$  resolution. Future data releases may address remaining issues such as the baseline subtraction in complex regions and other artefacts not fully addressed with the current reduction pipeline (e.g. a spike near  $v_{\text{lsr}} -48 \text{ km s}^{-1}$  in  $\text{C}^{18}\text{O}(2-1)$  spectra). All data products extracted from this data set, in particular a catalogue and masks of molecular clouds (Paper III), are also being made publicly available alongside this data release, thus providing the community with high added-value products that are complementary to other surveys. This will constitute an invaluable resource for Milky Way studies in the Southern hemisphere.

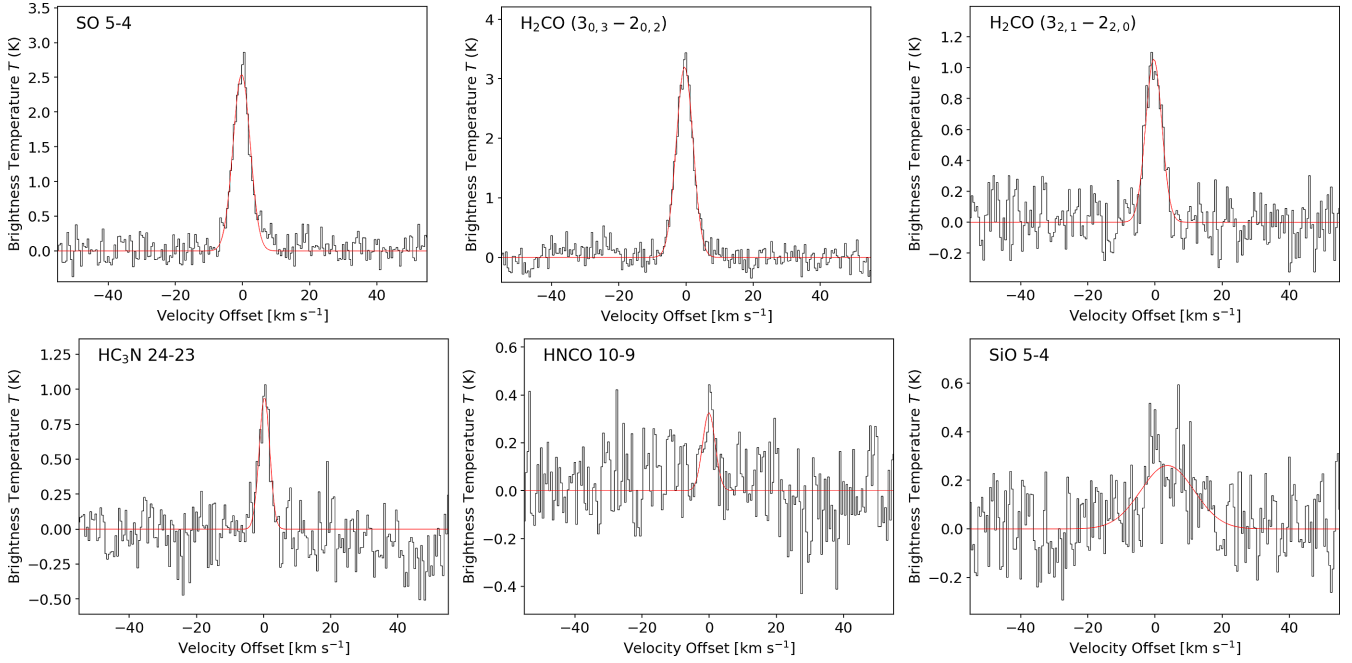
In this paper, we have provided an up-to-date description of the data reduction procedure and data products, and highlighted some known issues with some of the fields. We also discussed the Galactic distribution of the molecular gas and investigated its correlation with known star-forming complexes and the large-scale structural features of the Galaxy such as the spiral arms. Overall, the data appear consistent with a four-arm model of the Galaxy. Using the model from Taylor & Cordes (1993) and updated by Cordes (2004), we found that  $\sim 60$  per cent of the  $^{13}\text{CO}(2-1)$  emission is tightly associated with the spiral arms (i.e. within  $10 \text{ km s}^{-1}$  of an arm) and very clear peaks can be seen in the distribution of intensities with Galactocentric distance, which can be attributed to specific spiral arms.

We have also shown how the velocity information allows us to analyse the complex nature of the molecular gas, which can be separated into different scale structures (filamentary, diffuse, and compact structures). This also allows us to investigate the large-scale dynamics of the interstellar medium. We have also demonstrated the feasibility of using transitions from less abundant molecular species for science exploitation. Finally, we have highlighted some interesting regions where the SEDIGISM survey can provide either a new perspective (i.e. Galactic Centre region and the Bania molecular complex) or identify a new population of local molecular clouds, which appear as large ( $\sim 1^\circ$ ) features near  $v_{\text{lsr}} = 0 \text{ km s}^{-1}$  and with very narrow ( $< 1 \text{ km s}^{-1}$ ) line widths.

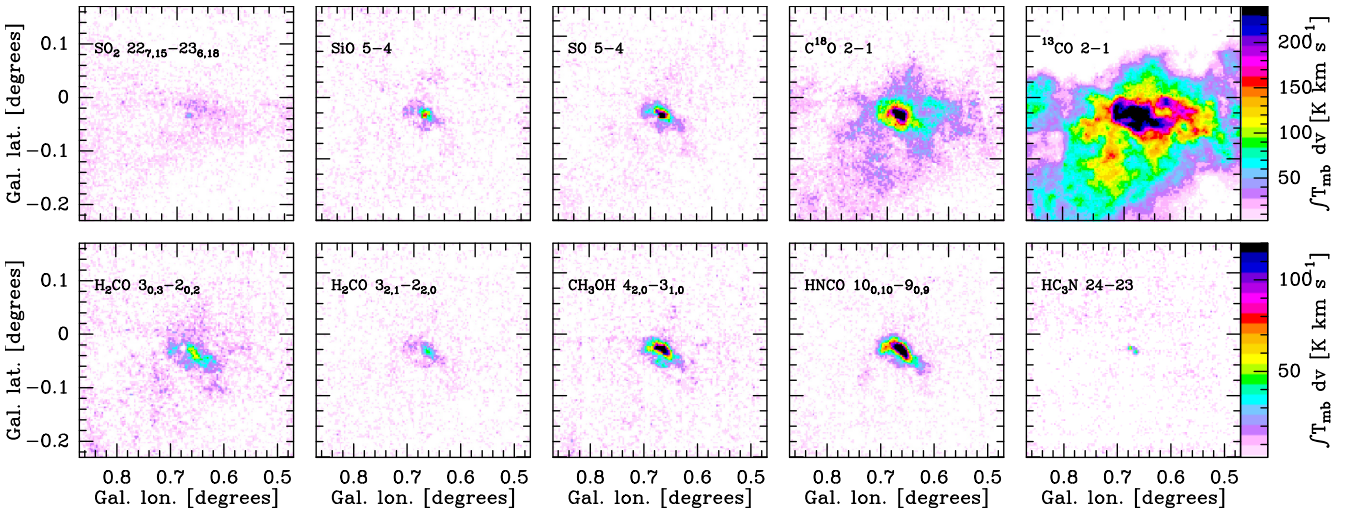
A systematic exploitation of the full survey data is now under way. We have also used the SEDIGISM data to confirm the nature of filaments previously identified in ATLASGAL (Li et al. 2016a) and to explore their kinematics and mass per unit length (Mattern et al. 2018). In parallel to this work, we are publishing a catalogue of nearly 11 000 molecular clouds and complexes extracted with SCIMES (Colombo et al. 2015), for which we derived distances and physical properties (Paper III), and a systematic assessment of the dense gas fraction and SFE as a function of environment (Paper IV).

In addition to these studies, there are a number of ongoing projects aimed at extracting and characterizing very long filaments directly from the spectral cubes. We also plan to constrain further the large-scale Galactic structure (number and position of the spiral arms, orientation of the bar), by comparing the SEDIGISM data with the results of simulations. By exploiting the SEDIGISM and ThrUMMS (Barnes et al. 2015) data together, we will also characterize the excitation conditions of the ISM over a large fraction of the Galaxy, extending the exploratory work presented in Paper I to the full

<sup>4</sup><https://spectral-cube.readthedocs.io/>.



**Figure 15.** Stacked spectra over the G334 field for the transitions SO(5–4), H<sub>2</sub>CO(3<sub>0,3</sub>–2<sub>0,2</sub>), H<sub>2</sub>CO(3<sub>2,1</sub>–2<sub>2,0</sub>), HC<sub>3</sub>N(24–23), HNCO(10–9), and SiO(5–4). The red line in each panel shows the best-fitting Gaussian profile.



**Figure 16.** Integrated intensity maps between +40 and +90 km s<sup>-1</sup> towards a region around Sgr B2 showing extended emission in several molecular tracers. The linear scale corresponds to 3–120 K km s<sup>-1</sup> for each panel, except the <sup>13</sup>CO line, where it goes up to 240 K km s<sup>-1</sup>. The weakest line of H<sub>2</sub>CO (3<sub>2,2</sub>–2<sub>2,1</sub>) is not shown here.

survey coverage. Other topics under study include the analysis of the dynamical properties and turbulence in giant molecular complexes.

Clearly, a lot of novel studies can be carried out based on the SEDIGISM data alone, and the exploitation of this survey combined with data from other spectroscopic or continuum surveys opens new perspectives for a detailed investigation of the structure and physical conditions of the interstellar medium.

## ACKNOWLEDGEMENTS

We thank the anonymous referee for their positive report and constructive comments. We are very grateful for the continuous support provided by the APEX staff. FS acknowledges support from

a CEA/Marie Skłodowska-Curie Enhanced Eurotalents fellowship. ADC acknowledges support from the Royal Society University Research Fellowship URF/R1/191609. LB acknowledges support from CONICYT project Basal AFB-170002. HB acknowledges support from the European Research Council under the Horizon 2020 Framework Program via the ERC Consolidator Grant CSF-648505. HB also acknowledges support from the Deutsche Forschungsgemeinschaft (DFG) via Sonderforschungsbereich (SFB) 881 "The Milky Way System" (subproject B1). This work was partially funded by the Collaborative Research Council 956 "Conditions and impact of star formation" (subproject A6), also funded by the DFG. MW acknowledges funding from the European Union's Horizon 2020 research and innovation programme under the Marie Skłodowska-

Curie grant agreement No. 796461. TCs has received financial support from the French State in the framework of the IdEx Université de Bordeaux Investments for the future Program. CLD acknowledges funding from the European Research Council for the Horizon 2020 ERC consolidator grant project ICYBOB, grant number 818940. This document was prepared using the Overleaf web application, which can be found at [www.overleaf.com](http://www.overleaf.com).

This publication is based on data acquired with the Atacama Pathfinder Experiment (APEX), projects 092.F-9315 and 193.C-0584. APEX is a collaboration between the Max-Planck-Institut für Radioastronomie, the European Southern Observatory, and the Onsala Space Observatory.

## DATA AVAILABILITY

The data presented in this paper is available from a dedicated website: <https://sedigism.mpifr-bonn.mpg.de>.

## REFERENCES

- Aguirre J. E. et al., 2011, *ApJS*, 192, 4  
 Alves J. et al., 2020, *Nature*, 578, 237  
 Baba J., Saitoh T. R., Wada K., 2010, *PASJ*, 62, 1413  
 Bania T. M., 1977, *ApJ*, 216, 381  
 Bania T. M., 1980, *ApJ*, 242, 95  
 Bania T. M., 1986, *ApJ*, 308, 868  
 Bania T. M., Stark A. A., Heiligman G. M., 1986, *ApJ*, 307, 350  
 Barnes P. J. et al., 2011, *ApJS*, 196, 12  
 Barnes P. J., Muller E., Indermuhle B., O'Dougherty S. N., Lowe V., Cunningham M., Hernandez A. K., Fuller G. A., 2015, *ApJ*, 812, 6  
 Belloche A., Müller H. S. P., Menten K. M., Schilke P., Comito C., 2013, *A&A*, 559, A47  
 Benedettini M. et al., 2020, *A&A*, 633, A147  
 Beuther H. et al., 2016, *A&A*, 595, A32  
 Bissantz N., Englmaier P., Gerhard O., 2003, *MNRAS*, 340, 949  
 Bland-Hawthorn J., Gerhard O., 2016, *ARA&A*, 54, 529  
 Bovy J., Leung H. W., Hunt J. A. S., Mackereth J. T., García-Hernández D. A., Roman-Lopes A., 2019, *MNRAS*, 490, 4740  
 Braiding C. et al., 2018, *Publ. Astron. Soc. Aust.*, 35, e029  
 Bronfman L., Casassus S., May J., Nyman L.-Å., 2000, *A&A*, 358, 521  
 Burton W. B., 1971, *A&A*, 10, 76  
 Burton W. B., Gordon M. A., 1978, *A&A*, 63, 7  
 Burton M. G. et al., 2013, *Publ. Astron. Soc. Aust.*, 30, 44  
 Carey S. J. et al., 2009, *PASP*, 121, 76  
 Carlhoff P. et al., 2013, *A&A*, 560, A24  
 Caswell J. L., Haynes R. F., 1982, *ApJ*, 254, L31  
 Chen X., Wang S., Deng L., de Grijs R., Liu C., Tian H., 2019, *Nat. Astron.*, 3, 320  
 Churchwell E. et al., 2009, *PASP*, 121, 213  
 Colombo D., Rosolowsky E., Ginsburg A., Duarte-Cabral A., Hughes A., 2015, *MNRAS*, 454, 2067  
 Contreras Y. et al., 2013, *A&A*, 549, A45  
 Cordes J. M., 2004, in Clemens D., Shah R., Brainerd T., eds, *ASP Conf. Ser. Vol. 317, Milky Way Surveys: The Structure and Evolution of our Galaxy*. Astron. Soc. Pac., San Francisco, p. 211  
 Csengeri T. et al., 2014, *A&A*, 565, A75  
 Csengeri T. et al., 2017, *A&A*, 600, L10  
 Dame T. M., Thaddeus P., 2008, *ApJ*, 683, L143  
 Dame T. M., Hartmann D., Thaddeus P., 2001, *ApJ*, 547, 792  
 Dempsey J. T., Thomas H. S., Currie M. J., 2013, *ApJS*, 209, 8  
 Dobbs C. L., Burkert A., 2012, *MNRAS*, 421, 2940  
 Drimmel R., 2000, *A&A*, 358, L13  
 Duronea N. U. et al., 2019, *MNRAS*, 489, 1519  
 Eden D. J., Moore T. J. T., Plume R., Morgan L. K., 2012, *MNRAS*, 422, 3178  
 Eden D. J. et al., 2017, *MNRAS*, 469, 2163  
 Eilers A.-C., Hogg D. W., Rix H.-W., Ness M. K., 2019, *ApJ*, 871, 120  
 Elia D. et al., 2017, *MNRAS*, 471, 100  
 Foyle K., Rix H. W., Walter F., Leroy A. K., 2010, *ApJ*, 725, 534  
 Fukui Y., Iguchi T., Kaifu N., Chikada Y., Morimoto M., Nagane K., Miyazawa K., Miyaji T., 1977, *PASJ*, 29, 643  
 Fukui Y., Kaifu N., Morimoto M., Miyaji T., 1980, *ApJ*, 241, 147  
 Gaia Collaboration et al., 2018, *A&A*, 616, A11  
 García P., Bronfman L., Nyman L.-Å., Dame T. M., Luna A., 2014, *ApJS*, 212, 2  
 Gómez G. C., Cox D. P., 2004, *ApJ*, 615, 758  
 Green J. A. et al., 2011, *ApJ*, 733, 27  
 Güsten R., Nyman L. Å., Schilke P., Menten K., Cesarsky C., Booth R., 2006, *A&A*, 454, L13  
 Hoare M. G. et al., 2012, *PASP*, 124, 939  
 Immer K., Reid M. J., Menten K. M., Brunthaler A., Dame T. M., 2013, *A&A*, 553, A117  
 Jackson J. M. et al., 2006, *ApJS*, 163, 145  
 Jackson J. M., Finn S. C., Chambers E. T., Rathborne J. M., Simon R., 2010, *ApJ*, 719, L185  
 Jones C., Dickey J. M., Dawson J. R., McClure-Griffiths N. M., Anderson L. D., Bania T. M., 2013, *ApJ*, 774, 117  
 Leroy A. K. et al., 2017, *ApJ*, 846, 71  
 Li Z., Gerhard O., Shen J., Portail M., Wegg C., 2016b, *ApJ*, 824, 13  
 Li G.-X., Urquhart J. S., Leurini S., Csengeri T., Wyrowski F., Menten K. M., Schuller F., 2016a, *A&A*, 591, A5  
 Linke R. A., Stark A. A., Frerking M. A., 1981, *ApJ*, 243, 147  
 Liszt H. S., Burton W. B., 1980, *ApJ*, 236, 779  
 Longmore S. N. et al., 2013, *MNRAS*, 429, 987  
 Mattern M. et al., 2018, *A&A*, 619, A166  
 Medina S. N. X. et al., 2019, *A&A*, 627, A175  
 Molinari S. et al., 2010, *A&A*, 518, L100  
 Moore T. J. T., Urquhart J. S., Morgan L. K., Thompson M. A., 2012, *MNRAS*, 426, 701  
 Moore T. J. T. et al., 2015, *MNRAS*, 453, 4264  
 Morris M., Serabyn E., 1996, *ARA&A*, 34, 645  
 Pettitt A. R., Dobbs C. L., Acreman D. M., Price D. J., 2014, *MNRAS*, 444, 919  
 Pettitt A. R., Dobbs C. L., Acreman D. M., Bate M. R., 2015, *MNRAS*, 449, 3911  
 Pettitt A. R., Ragan S. E., Smith M. C., 2020, *MNRAS*, 491, 2162  
 Pitts R. L., Barnes P. J., Varosi F., 2019, *MNRAS*, 484, 305  
 Purcell C. R. et al., 2013, *ApJS*, 205, 1  
 Ragan S. E., Moore T. J. T., Eden D. J., Hoare M. G., Urquhart J. S., Elia D., Molinari S., 2018, *MNRAS*, 479, 2361  
 Rathborne J. M., Johnson A. M., Jackson J. M., Shah R. Y., Simon R., 2009, *ApJS*, 182, 131  
 Reid M. J. et al., 2009, *ApJ*, 700, 137  
 Reid M. J. et al., 2014, *ApJ*, 783, 130  
 Reid M. J., Dame T. M., Menten K. M., Brunthaler A., 2016, *ApJ*, 823, 77  
 Reid M. J. et al., 2019, *ApJ*, 885, 131  
 Rigby A. J. et al., 2016, *MNRAS*, 456, 2885  
 Rigby A. J. et al., 2019, *A&A*, 632, A58  
 Riquelme D., Bronfman L., Mauersberger R., May J., Wilson T. L., 2010, *A&A*, 523, A45  
 Roman-Duval J., Jackson J. M., Heyer M., Johnson A., Rathborne J., Shah R., Simon R., 2009, *ApJ*, 699, 1153  
 Romero-Gómez M., Mateu C., Aguilar L., Figueras F., Castro-Ginard A., 2019, *A&A*, 627, A150  
 Rosolowsky E., Leroy A., 2006, *PASP*, 118, 590  
 Sanders J. L., Smith L., Evans N. W., 2019, *MNRAS*, 488, 4552  
 Sanna A. et al., 2014, *ApJ*, 781, 108  
 Schuller F. et al., 2009, *A&A*, 504, 415  
 Schuller F. et al., 2017, *A&A*, 601, A124 (Paper I)  
 Siebert A. et al., 2011, *MNRAS*, 412, 2026  
 Sormani M. C., Binney J., Magorrian J., 2015, *MNRAS*, 454, 1818  
 Sormani M. C., Treß R. G., Ridley M., Glover S. C. O., Klessen R. S., Binney J., Magorrian J., Smith R., 2018, *MNRAS*, 475, 2383  
 Stark A. A., Brand J., 1989, *ApJ*, 339, 763  
 Su Y. et al., 2019, *ApJS*, 240, 9



- Sutton E. C., Blake G. A., Masson C. R., Phillips T. G., 1985, *ApJS*, 58, 341  
 Tang X. D. et al., 2018, *A&A*, 611, A6  
 Taylor J. H., Cordes J. M., 1993, *ApJ*, 411, 674  
 Traficante A., Fuller G. A., Billot N., Duarte-Cabral A., Merello M., Molinari S., Peretto N., Schisano E., 2017, *MNRAS*, 470, 3882  
 Umemoto T. et al., 2017, *PASJ*, 69, 78  
 Urquhart J. S. et al., 2013a, *MNRAS*, 431, 1752  
 Urquhart J. S. et al., 2013b, *MNRAS*, 435, 400  
 Urquhart J. S., Figura C. C., Moore T. J. T., Hoare M. G., Lumsden S. L., Mottram J. C., Thompson M. A., Oudmaijer R. D., 2014a, *MNRAS*, 437, 1791  
 Urquhart J. S. et al., 2014b, *MNRAS*, 443, 1555  
 Urquhart J. S. et al., 2018, *MNRAS*, 473, 1059  
 Vallée J. P., 2017, *Astron. Rev.*, 13, 113  
 Wang Y. et al., 2020, *A&A*, 634, A83

## SUPPORTING INFORMATION

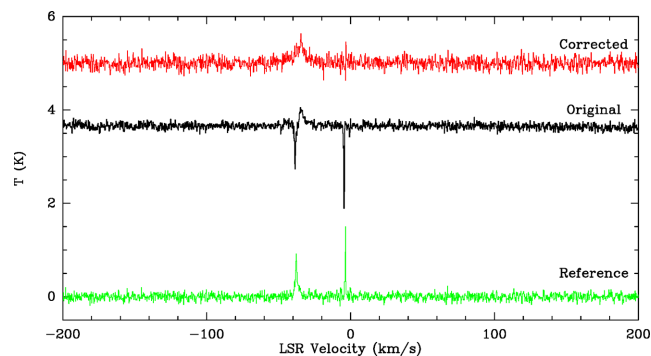
Supplementary data are available at [MNRAS](https://www.mnras.org) online.

**Table A1.** Spectra observed towards the reference positions: measured rms and spectral lines detected.

Please note: Oxford University Press is not responsible for the content or functionality of any supporting materials supplied by the authors. Any queries (other than missing material) should be directed to the corresponding author for the article.

## APPENDIX A: SPECTRA OBSERVED TOWARDS REFERENCE POSITIONS

As described in Section 2.1, position-switching observations were done using a fixed reference position for each map. These reference positions were located at  $\pm 1.5$  in galactic latitude. We have done pointed observations in  $^{13}\text{CO}(2-1)$  (also in position-switching mode) towards all these reference positions, using an off position located  $1^\circ$  further away from the galactic plane (i.e. at  $\pm 2.5$  in



**Figure A1.**  $^{13}\text{CO}(2-1)$  spectrum averaged over a small region of the  $0.5 \times 0.5 \text{ deg}^2$  subfield 303.25+0.25, before (black) and after correction (red). The spectrum measured toward the reference position (bottom, shown in green) has been added to each observed spectrum in the data cube.

latitude). In some rare cases where we have found that emission was still present in the off position (detectable as an absorption feature in the spectrum), we have repeated the observations using another, nearby off position.

The data were processed using standard procedures in GILDAS/CLASS. The spectra were smoothed to  $0.2 \text{ km s}^{-1}$  resolution. We list in Table A1 the measured rms at that resolution, and the number of lines detected and their  $v_{\text{lsr}}$  velocities. Only the lines detected at more than  $5\sigma$  (in integrated intensity) are listed. The spectrum observed towards the reference position was then subtracted from the on-source data only when at least one line was detected. Fig. A1 shows an example case where such a correction was required.

## APPENDIX B: COMPARISON BETWEEN SEDIGISM AND HERO DATA ACROSS THE W43 REGION

In this section, we compare the observations of the W43 region from SEDIGISM and from the W43 Hera/EmiR Observations (HERO, Carlhoff et al. 2013) project, observed with the IRAM 30-m telescope. Both surveys imaged this region in  $^{13}\text{CO}(2-1)$  and  $\text{C}^{18}\text{O}(2-1)$  lines. The HERO data have better angular ( $12$  versus  $30 \text{ arcsec}$ ) and spectral ( $0.15$  versus  $0.25 \text{ km s}^{-1}$ ) resolutions than SEDIGISM, with a similar sensitivity (typically  $1 \text{ K } T_{\text{mb}}$  per  $0.15 \text{ km s}^{-1}$  channel, but with smaller pixels; Carlhoff et al. 2013).

To compare the data from the SEDIGISM and HERO surveys, we first smoothed and interpolated both data sets to a common resolution of  $35 \text{ arcsec}$  and  $0.5 \text{ km s}^{-1}$ . To do so, we used the PYTHON package SPECTRAL\_CUBE and the smoothing procedures described in its documentation.<sup>5</sup> Since the two data sets do not cover exactly the same region, we regridded the HERO data on the SEDIGISM data grid, using the ASTROPY REPROJECT function.

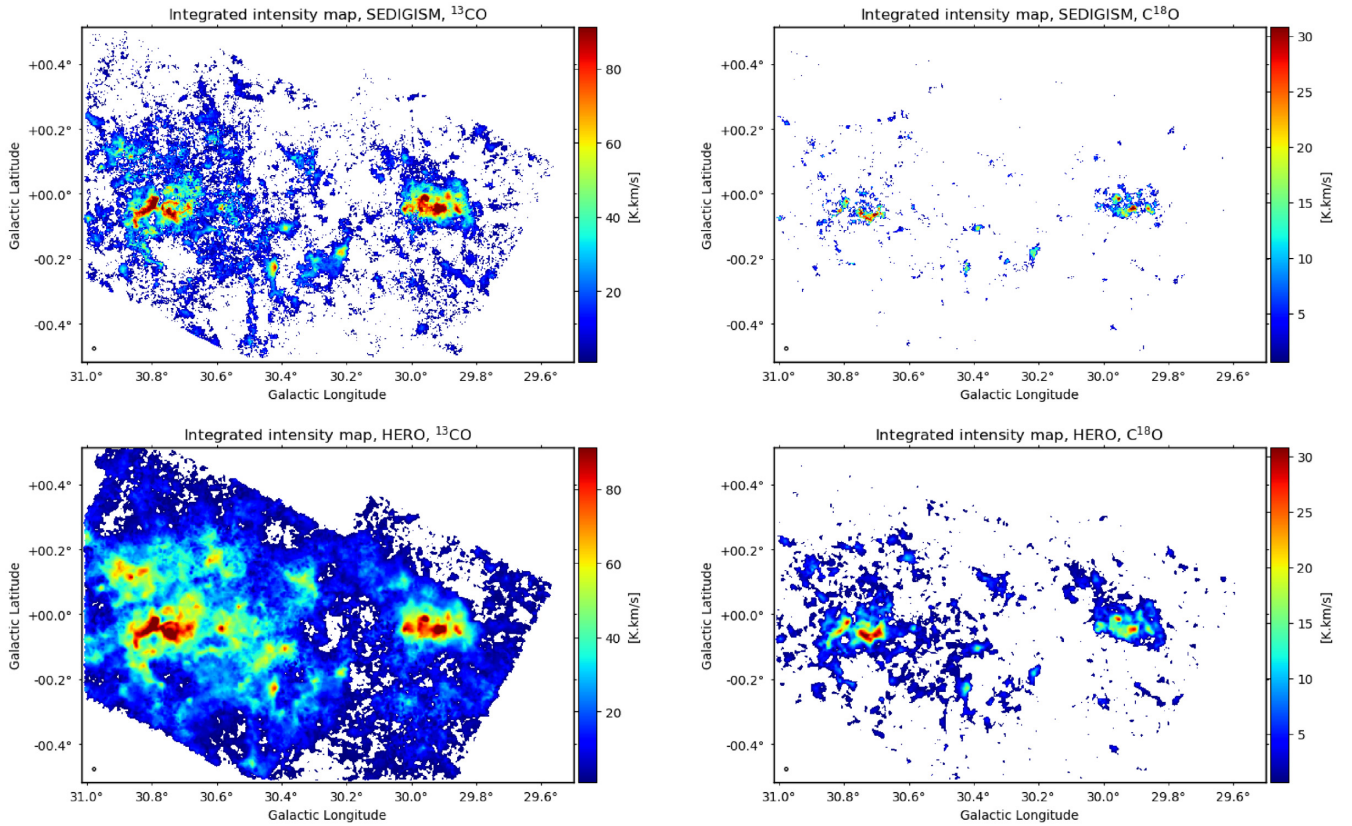
To consider only the significant emission in the comparison, we masked the data using a dilate masking technique (Rosolowsky & Leroy 2006). This technique consists of generating two masks, at relatively low and high S/N. Connected regions in the position–position–velocity (PPV) space in the low S/N mask that do not contain a region of the high S/N ratio mask are eliminated from the final mask. The result is an actual expansion of the high S/N regions to lower significant emission, without the inclusion of noisy peaks. For our purposes, we considered  $\text{SNR} \geq 10$  for the high S/N mask and  $\text{SNR} \geq 5$  for the low S/N one. We show the resulting integrated intensity maps (integrated over the full available range of  $v_{\text{lsr}}$ ) for the two data sets in Fig. B1 for  $^{13}\text{CO}$  (left-hand panels) and  $\text{C}^{18}\text{O}$  (right-hand panels).

It is clear from Fig. B1 that the HERO data have a lower noise than SEDIGISM, since less pixels are masked. Besides this, the  $^{13}\text{CO}$  integrated maps from the two surveys appear largely alike (Fig. B1, left-hand panels). To avoid biases due to the different sensitivity in the two surveys, we have also computed integrated  $^{13}\text{CO}$  maps considering only voxels above a fixed value of  $T_{\text{mb}} = 5 \text{ K}$  (Fig. B2). The ratio between the two integrated intensity maps appears mostly consistent around unity (within the calibration uncertainty), which

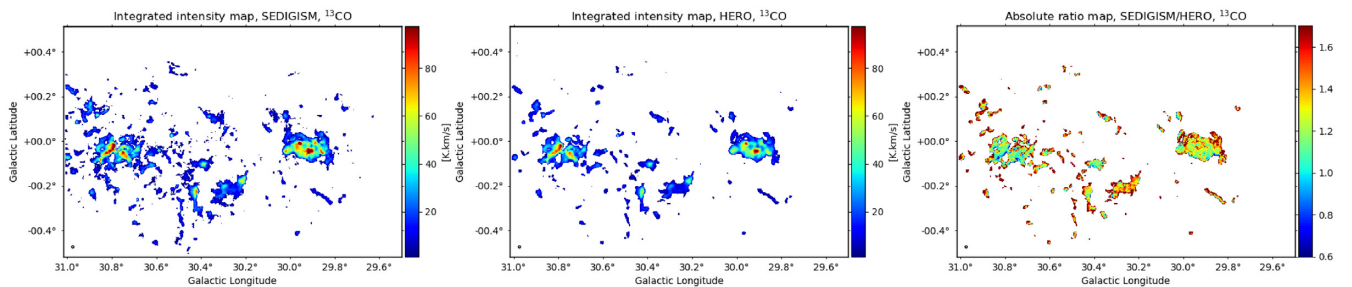
<sup>5</sup><https://spectral-cube.readthedocs.io/en/latest/smoothing.html>.

**Table A1.** Spectra observed towards the reference positions: measured rms and spectral lines detected. The positions (Col. 1) give the galactic coordinates of the associated on-source maps. The full table is available in the online version of this paper.

Position	$\sigma_{\text{rms}}$ (K) ( $\delta V = 0.2 \text{ km s}^{-1}$ )	Lines detected
303.25+0.25	0.066	Two lines: $T_{\text{peak}} = 0.69 \text{ K}$ at $v_{\text{lsr}} = -37.7 \text{ km s}^{-1}$ , $T_{\text{peak}} = 0.85 \text{ K}$ at $-3.5 \text{ km s}^{-1}$
303.25-0.25	0.066	—
303.75+0.25	0.066	One line: $T_{\text{peak}} = 0.90 \text{ K}$ at $v_{\text{lsr}} = -1.1 \text{ km s}^{-1}$
303.75-0.25	0.069	—
304.25+0.25	0.069	Three lines: $T_{\text{peak}} = 0.42 \text{ K}$ at $v_{\text{lsr}} = -40.4 \text{ km s}^{-1}$ , $T_{\text{peak}} = 2.60 \text{ K}$ at $-29.7 \text{ km s}^{-1}$ , $T_{\text{peak}} = 0.43 \text{ K}$ at $-3.3 \text{ km s}^{-1}$
304.25-0.25	0.068	—
304.75+0.25	0.069	One line: $T_{\text{peak}} = 1.51 \text{ K}$ at $v_{\text{lsr}} = -26.3 \text{ km s}^{-1}$
304.75-0.25	0.070	—



**Figure B1.** Integrated intensity maps from SEDIGISM (top panel) and HERO (bottom panels)  $^{13}\text{CO}$  (left-hand panels) and  $\text{C}^{18}\text{O}$  (right-hand panels) data. SEDIGISM and HERO data have been homogenized and masked as described in Section B.



**Figure B2.** Integrated  $^{13}\text{CO}(2-1)$  intensity maps from SEDIGISM (left-hand panel) and HERO (middle panel), and absolute ratio between the two maps (right-hand panel). Only voxels above a threshold of 5 K have been considered.

demonstrates that both data sets are consistent. Since the C<sup>18</sup>O (2–1) line emission is much weaker than <sup>13</sup>CO, we can only compare the brightest regions between both data sets (Fig. B1, right-hand panels). We notice some slight changes for the distribution of the C<sup>18</sup>O emission between SEDIGISM and HERO, but there is no pronounced systematic difference visible.

<sup>1</sup>Max-Planck-Institut für Radioastronomie, Auf dem Hügel 69, D-53121 Bonn, Germany

<sup>2</sup>European Southern Observatory, Alonso de Cordova 3107, Vitacura, Santiago, Chile

<sup>3</sup>Leibniz-Institut für Astrophysik Potsdam (AIP), An der Sternwarte 16, D-14482 Potsdam, Germany

<sup>4</sup>Centre for Astrophysics and Planetary Science, University of Kent, Canterbury CT2 7NH, UK

<sup>5</sup>Laboratoire d'astrophysique de Bordeaux, Univ. Bordeaux, CNRS, B18N, allée Geoffroy Saint-Hilaire, F-33615 Pessac, France

<sup>6</sup>School of Physics and Astronomy, Cardiff University, Cardiff CF24 3AA, UK

<sup>7</sup>Department of Astronomy, University of Florida, PO Box 112055, Gainesville, FL 32611, USA

<sup>8</sup>Department of Physics, Faculty of Science, Hokkaido University, Sapporo 060-0810, Japan

<sup>9</sup>West Virginia University, Department of Physics and Astronomy, PO Box 6315, Morgantown, WV 26506, USA

<sup>10</sup>Space Science Institute, 4765 Walnut Street Suite B, Boulder, CO 80301, USA

<sup>11</sup>Observatorio Astrofisico di Arcetri, Largo Enrico Fermi 5, I-50125 Firenze, Italy

<sup>12</sup>Max-Planck-Institut für Astronomie, Königstuhl 17, D-69117 Heidelberg, Germany

<sup>13</sup>Departamento de Astronomía, Universidad de Chile, Casilla 36-D, Santiago, Chile

<sup>14</sup>Department of Physics & Astronomy, University of Exeter, Stocker Road, Exeter EX4 4QL, UK

<sup>15</sup>Astrophysics Research Institute, Liverpool John Moores University, 146 Brownlow Hill, Liverpool L3 5RF, UK

<sup>16</sup>Korea Astronomy and Space Science Institute, 776 Daedeok-daero, 34055 Daejeon, Republic of Korea

<sup>17</sup>Laboratoire d'Astrophysique de Marseille, Aix Marseille Université, CNRS, UMR 7326, F-13388 Marseille, France

<sup>18</sup>Istituto di Astrofisica e Planetologia Spaziali, INAF, via Fosso del Cavaliere 100, I-00133 Roma, Italy

<sup>19</sup>I. Physikalisches Institut, Universität zu Köln, Zùlpicher Str. 77, D-50937 Köln, Germany

<sup>20</sup>INAF – Istituto di Radioastronomia, Via Gobetti 101, I-40129 Bologna, Italy

<sup>21</sup>Astronomy Department, University of Wisconsin, 475 North Charter St, Madison, WI 53706, USA

<sup>22</sup>Department of Space, Earth and Environment, Chalmers University of Technology Onsala Space Observatory, SE-439 92 Onsala, Sweden

<sup>23</sup>Haystack Observatory, Massachusetts Institute of Technology, 99 Millstone Road, Westford, MA 01886, USA

<sup>24</sup>INAF – Osservatorio Astronomico di Cagliari, Via della Scienza 5, I-09047 Selargius (CA), Italy

<sup>25</sup>Univ. Grenoble Alpes, CNRS, IPAG, F-38000 Grenoble, France

<sup>26</sup>School of Engineering, Macquarie University, Sydney, NSW 2109, Australia

<sup>27</sup>McMaster University, 1 James St N, Hamilton, ON L8P 1A2, Canada

<sup>28</sup>European Southern Observatory, Karl-Schwarzschild-Str. 2, D-85748 Garching bei München, Germany

<sup>29</sup>Kavli Institute for Astronomy and Astrophysics, Peking University, 5 Yiheyuan Road, Haidian District, Beijing 100871, People's Republic of China

This paper has been typeset from a  $\text{\TeX}/\text{\LaTeX}$  file prepared by the author.