



Correction: OxHDL controls LOX-1 expression and plasma membrane localization through a mechanism dependent on NOX/ROS/NF-κB pathway on endothelial cells

Lorena Pérez · Alejandro Vallejos · Cesar Echeverria · Diego Varela · Claudio Cabello-Verrugio · Felipe Simon

Published online: 15 January 2020
 © United States and Canadian Academy of Pathology 2020

Correction to: Laboratory Investigation
<https://doi.org/10.1038/s41374-018-0151-3>

Figure 2 should appear as shown below. All authors agree with the author correction.

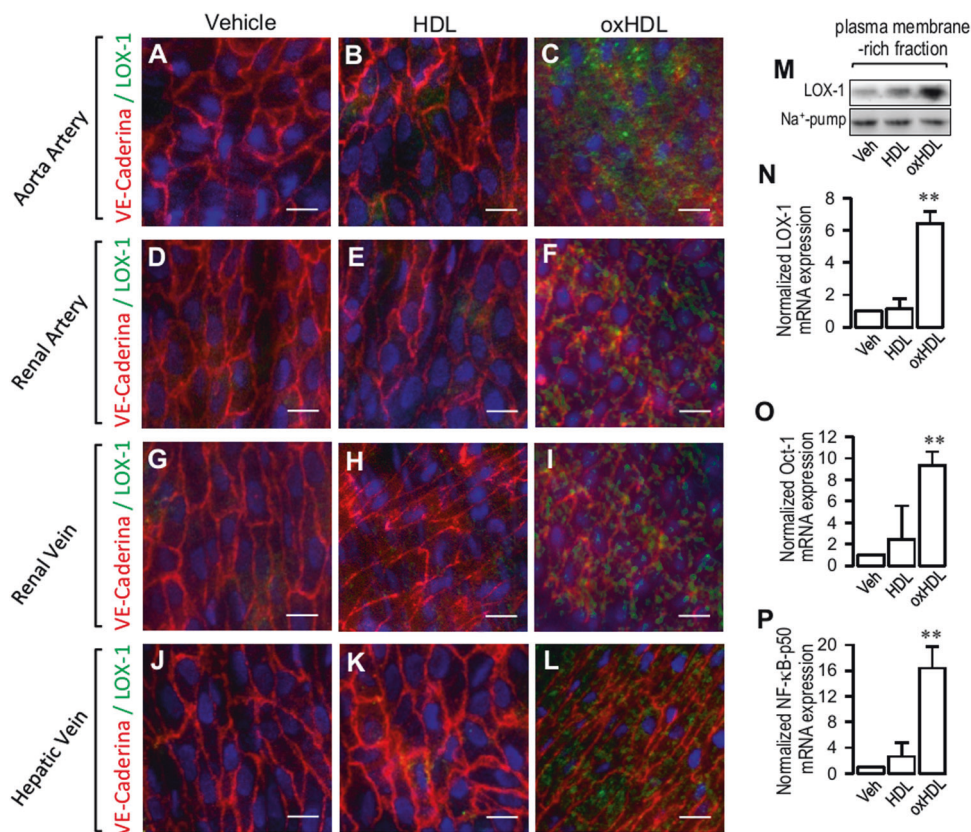


Fig. 2